

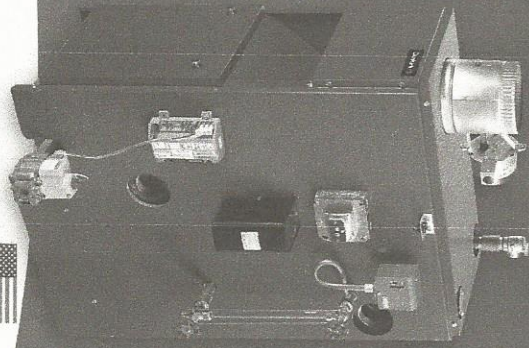
Dunkirk® PSB Series

Innovative. Efficient. Dependable. Dunkirk.

Plymouth Steam Boiler

Up to 82.7% AFUE Gas Fired Steam Boiler

- Available in 7 sizes from 75 to 289 MBH.
- Dependable Cast Iron Heat Exchanger with Cast Iron Push Nipples. The Sections and Push Nipples expand at the same rate when heated. By using similar materials instead of less expensive gaskets, the boiler maintains a water-tight seal over time.
- LWCO (Probe Type), Pressure High Limit Control, Pressure Gauge, Gauge Glass.
- Atmospheric Chimney Vent Boiler with Integral Draft Hood and Vent Damper. Low profile compact design makes it ideal for low clearance installations.
- Brass/copper pig tail siphon for long life.
- Textured paint jacket.
- 12 Year Cast to Last Limited Warranty (Residential Applications).



Dunkirk PSB Series Residential Gas Fired Steam Boiler

Dimensional Diagram	Model	Input Rate Nat./LP (MBH) (1)	Heating Capacity Nat./LP (MBH) (1)	Net AHRI Rating (1)			No. of Pipe Size	AFUE %	
				Steam (PPF)	Steam (Sq. Ft.)	Steam (MBH)			
<p>Front</p>	PSB-3D	75/70	62/58	1.33	196/183	47/44	3	5"	82.7/82.7
	PSB-4D	112/105	91/85	1.33	283/267	68/64	4	6"	82.0/80.4
	PSB-5D	150/140	122/114	1.33	383/358	92/86	5	6"	82.0/80.6
	PSB-6D	187/175	153/143	1.33	479/446	115/107	6	7"	82.0/80.9
	PSB-7D	225/210	183/171	1.33	571/533	137/128	7	7"	82.0/81.1
	PSB-8D	262/245	214/200	1.33	671/625	151/150	8	7"	82.0/81.3
	PSB-9D	299/280	245/229	1.33	767/717	184/172	9	7"	82.0/81.5

(1) AHRI = 1,000 Btu/h. Btu = British Thermal Unit per hour.
 - Heating Capacity is based on DOE (Department of Energy) test procedure.
 - For altitudes above 2,000 ft, reduce input rate 4% for each 1,000 ft. above sea level.
 - Add model number suffix "P" for Propane Gas.
 - Net AHRI rating ranges shown are based on a piping and fabric allowance of 1.333.
 - Base selection of boiler size on "Net AHRI Rating" being equal to or greater than installed load. In rare cases, consult manufacturer before selecting a boiler for residential usage. Venting and piping requirements such as intermittent system operation, exhaust piping systems, etc.

Clearances		Combustible Materials (Required)	
Required clearance from boiler:		Top	6" (152 mm)
Openings of		Rear	6" (152 mm)
above it into		Control Side	7" (178 mm)
adjacent space with		Opposite Side	6" (152 mm)
no wall in front		Front	Above*
of boiler		Flue/Vent Connector	6" (152 mm)
standoff or a			
score is 18 inches			
to the top of the			
opening			
of side walls as			
shown in			

Connections (All Models)	Electrical	Dimensions/Weights	Standard Equipment
Return/Supply Tappings 2 1/2" NPT, Gas In 0.75/1.12/1.50 1/2" NPT, 1.87/2.25/2.62/2.99 3/4" NPT	120 Volts AC, 60 hertz, 1 phase, Less than 12 amps (15 amp circuit recommended)	Model PSB-3D PSB-4D PSB-5D PSB-6D PSB-7D PSB-8D PSB-9D	Boiler Control Module, Electronic Low Water Cut-Off with 3/4" Probe, Pressure Limit Control, Steam Pressure Gauge and Glass Water Level Gauge. Heat Exchanger, Cast Iron Sections with Cast Iron Push Nipples. Gas Manifolds with Orifice Adjusters. Regulator, Intermittent Pilot Control, Continuous Pilot, Burner/Electrode/ Flame Sensor and Integral Draft Diverter. Electrical: 24 Volt Transformer. Safety: Reset Pilot, Out Safety Shut-Off Fuse Link (Red), Out Switch, and Blocked Vent Safety Shut-Off. Material: Rain Coat, 3/4" Supply Tappings, 2 1/2" Return Tappings, 2 1/2" Square Head Pipe Plugs - to plug unused supply and return tappings. Other: Assembled Boiler with Insulated Jacket, 3/4" Boiler Drain Valve, 5 psi ASME Pop Safety Valve, (2) 2 1/2" Supply Tappings and (2) 2 1/2" Return Tappings (2) 2 1/2" Square Head Pipe Plugs - to plug unused supply and return tappings. Both Natural Gas or LP models available. Other options include: Electric Water Feeder and Combustible Floor Plate.
		A (Width) 11-1/4" 14-1/2" 17-3/4" 21" 24-1/4" 27-1/2" 30-3/4"	
		Weight 297 lbs. 368 lbs. 440 lbs. 512 lbs. 594 lbs. 659 lbs. 736 lbs.	

All ratings and specifications subject to change.

Contractor: 800.325.5479
UBIM

P.O. Box 4729
 Utica, New York 13504
 Tel: 315.797.1810 • Fax: 315.797.3782
 www.dunkirk.com

ASME
AHRI CERTIFIED
 www.ahri.org

Dunkirk®

PH 24000979 Rev. 9/14