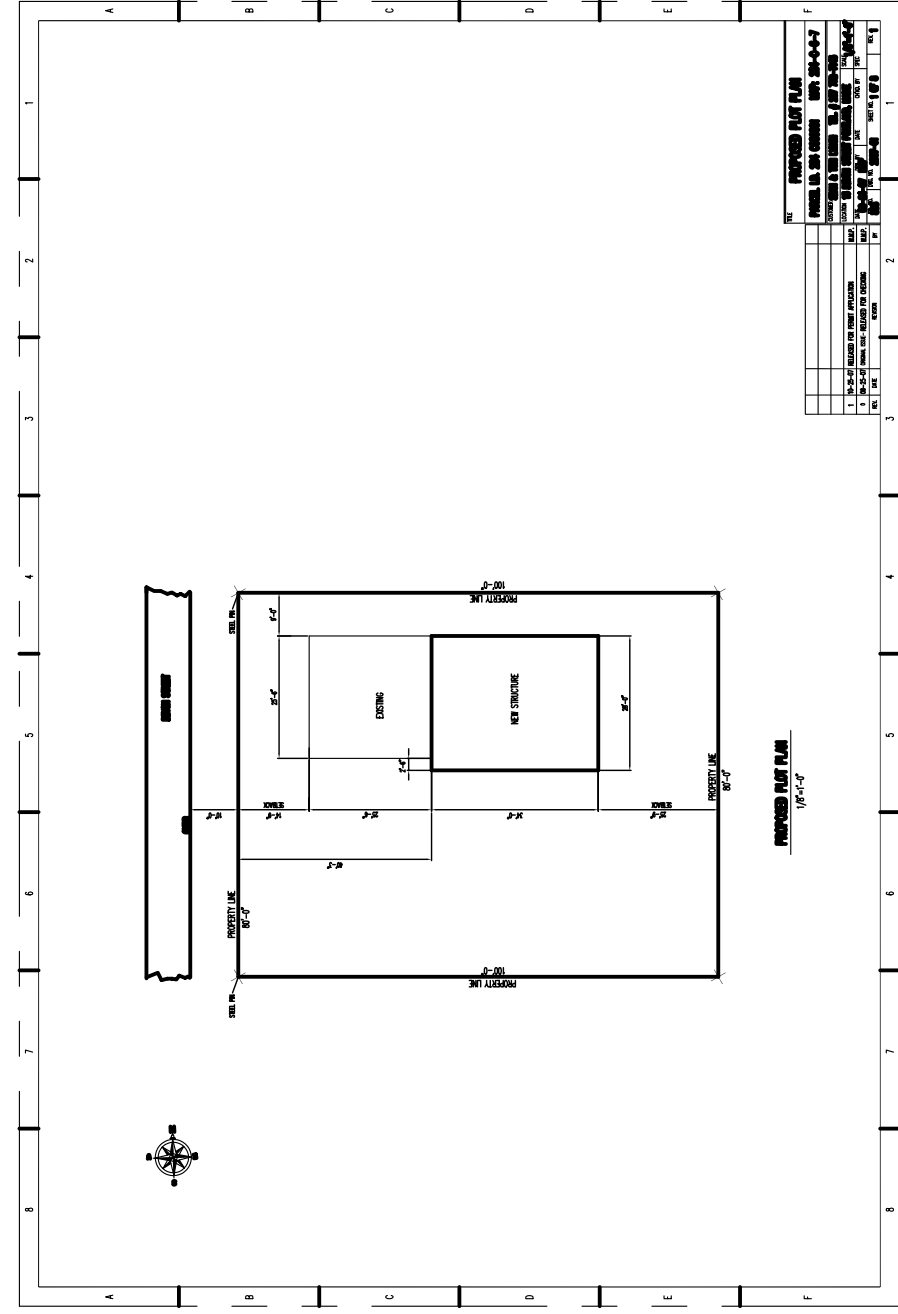


# BUILDING MODIFICATIONS

SEAN & TORI LYNCH

13 DEVON STREET PORTLAND, MAINE

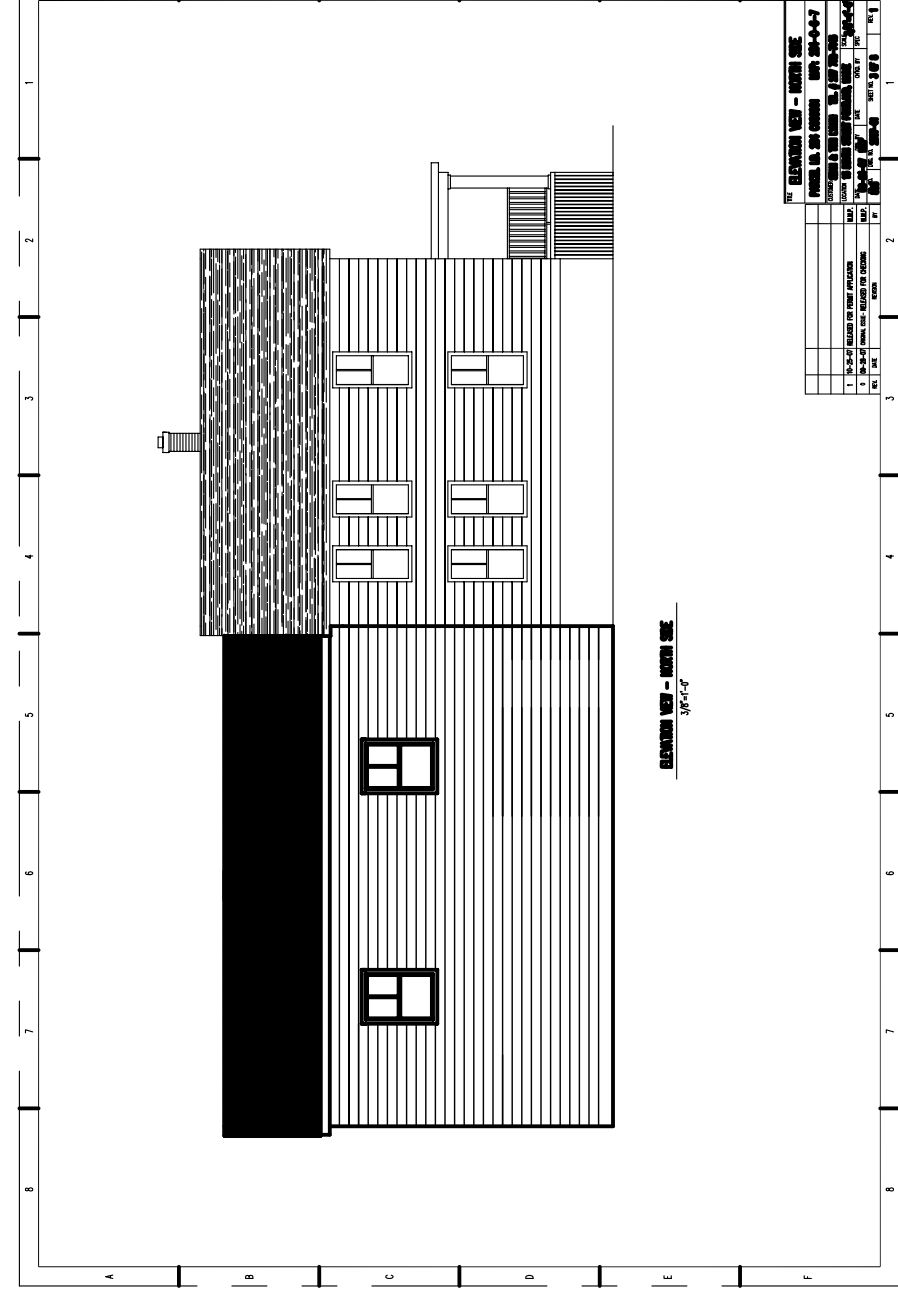
PARCEL I.D. 284 C006001



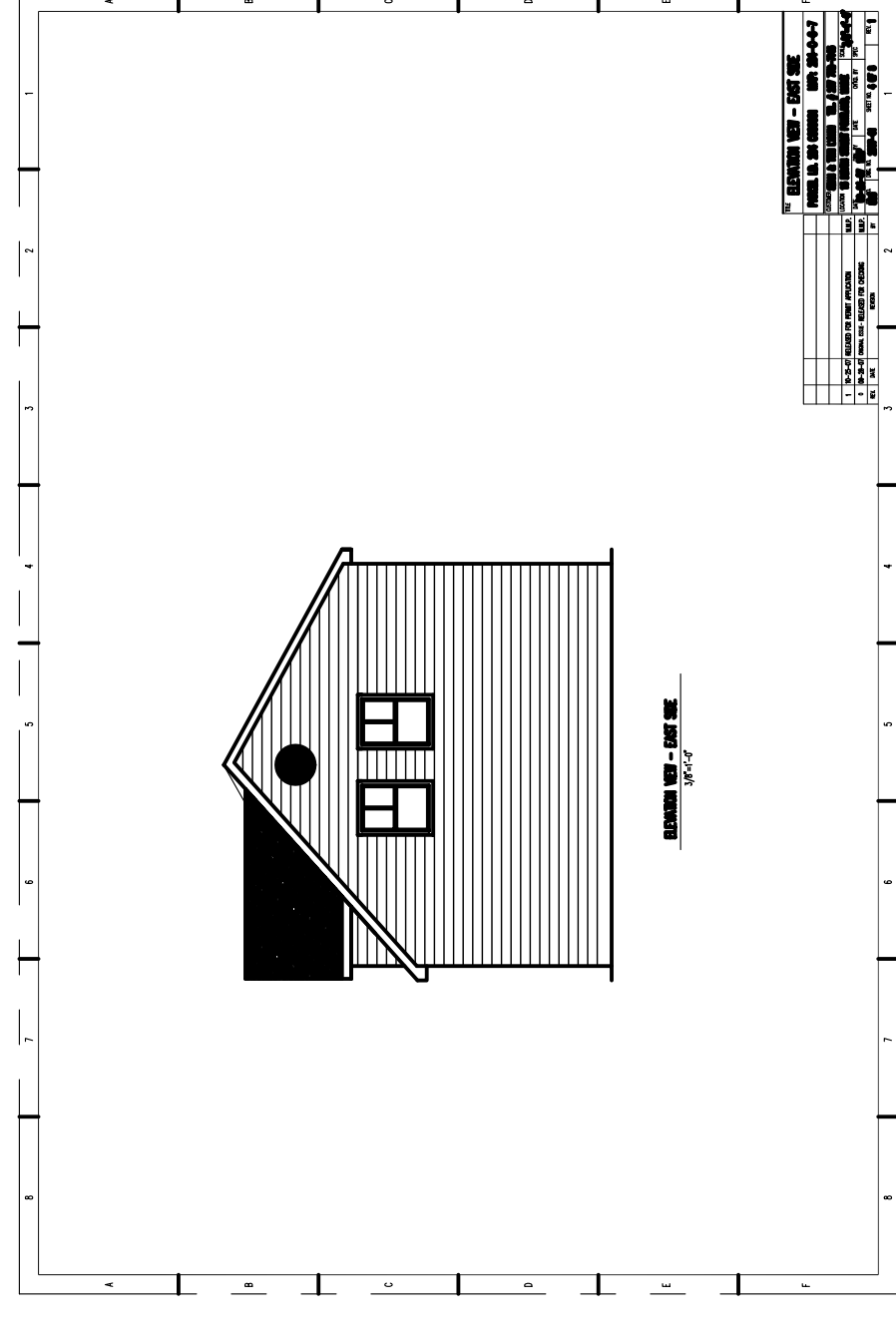
SHEET NO. 1 PROPOSED PLOT PLAN



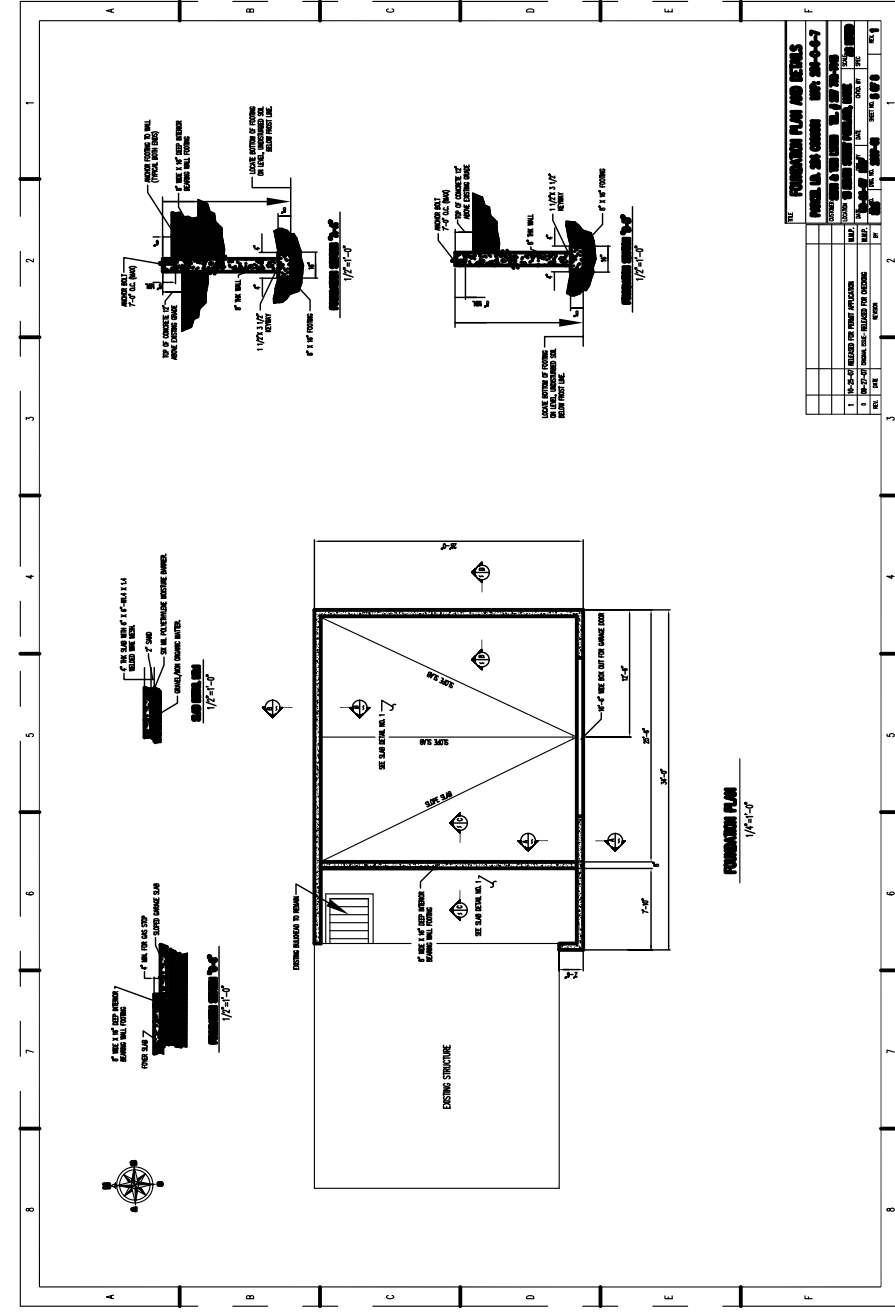
SHEET NO. 2 ELEVATION VIEW - SOUTH SIDE



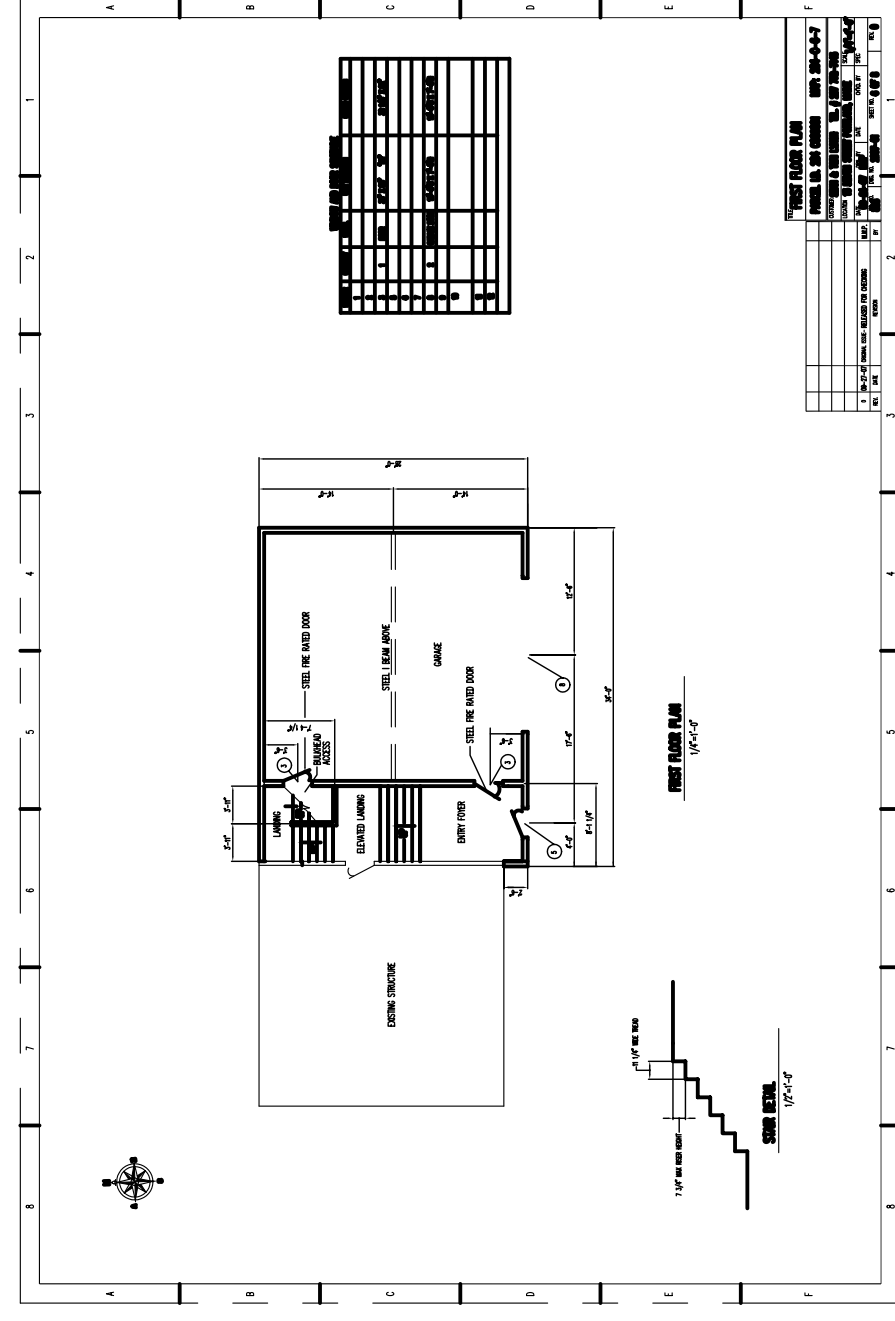
SHEET NO. 3 ELEVATION VIEW - NORTH SIDE



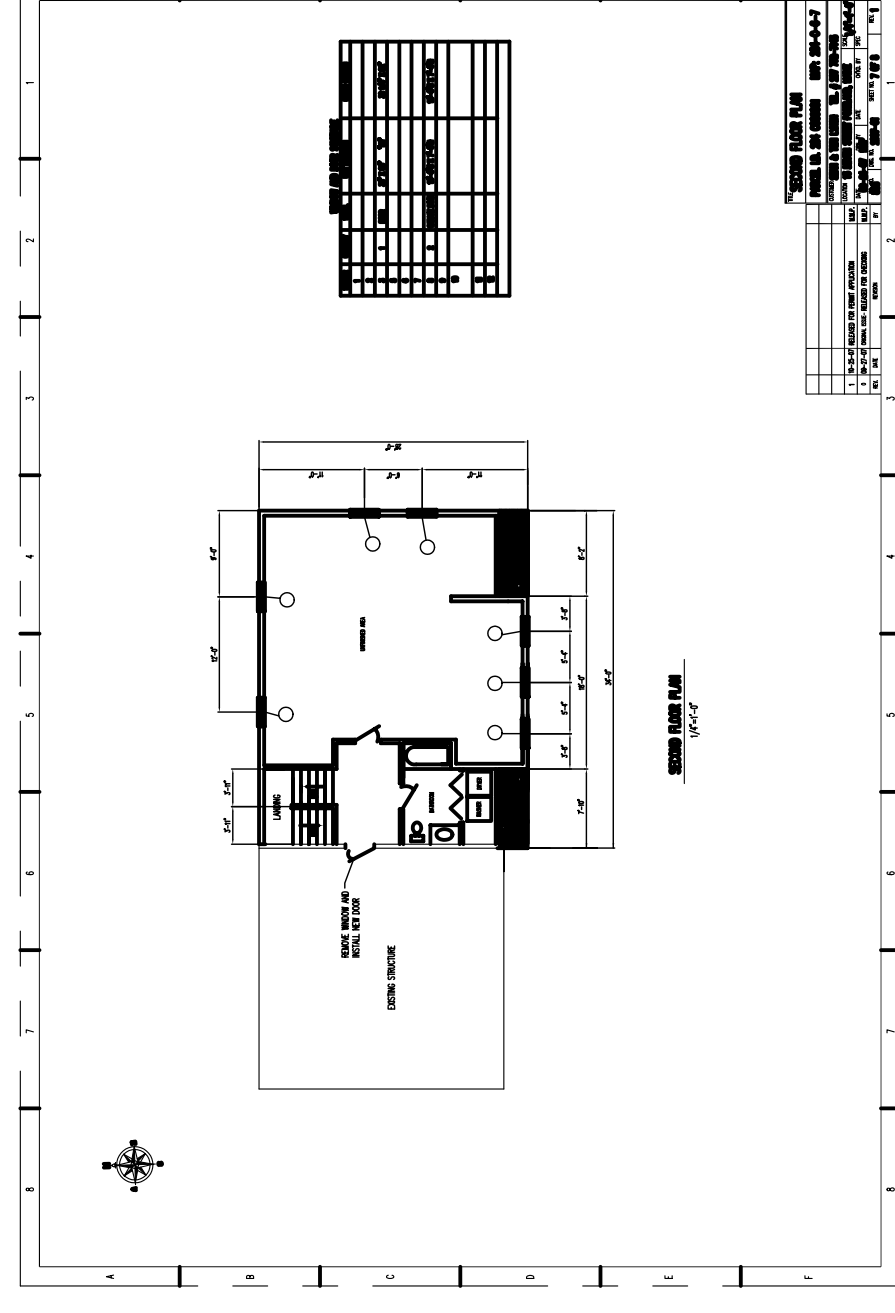
SHEET NO. 4 ELEVATION VIEW - EAST SIDE



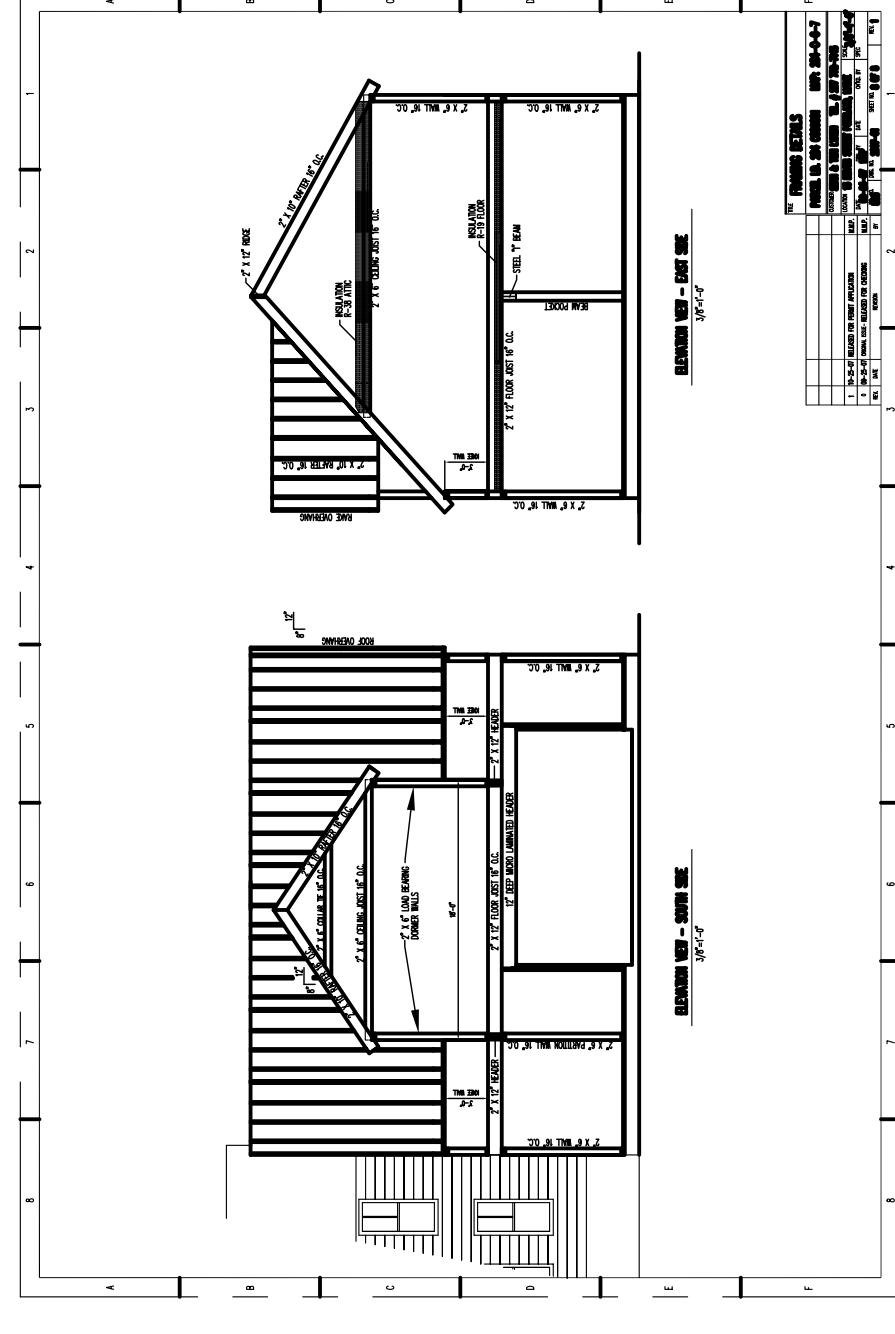
SHEET NO. 5 FOUNDATION PLAN AND DETAILS



SHEET NO. 6 FIRST FLOOR PLAN



SHEET NO. 7 SECOND FLOOR PLAN



SHEET NO. 8 FRAMING DETAILS