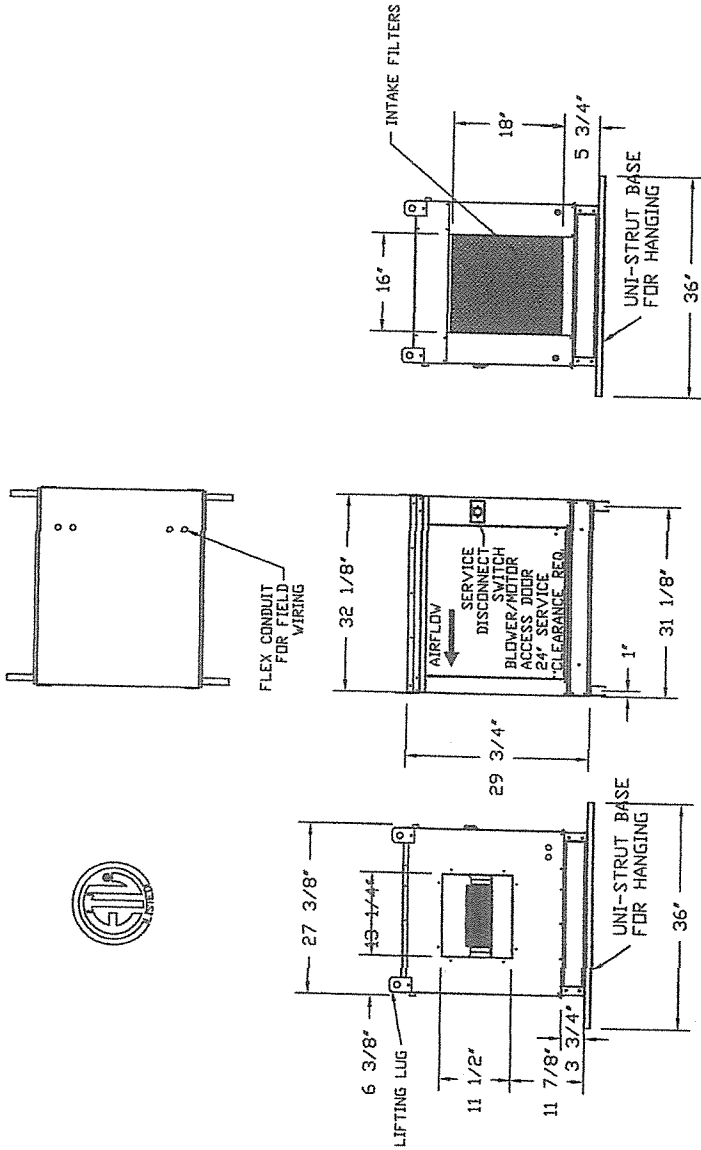


- FAN #2 IN-LINE1-G10D - SUPPLY FAN  
 1. DIRECT DRIVE IN-LINE SUPPLY UNIT W/ 10" BLOWER IN SIZE #1 HOUSING WITH SPEED CONTROL, DISCONNECT SWITCH, INSULATED HOUSING.  
 2. SIDE DISCHARGE - AIR FLOW RIGHT -> LEFT  
 3. FULL CRATING FOR UNTEMPERED FANS FOR SHIPPING.  
 4. ECM WIRING PACKAGE AND MANUAL CONTROL FOR ECM MOTORS ON SUPPLY PRVS.  
 5. INDOOR HANGING CRABLE FOR THE SIZE 1 UNTEMPERED IN-LINE UNIT. 2 HSA125 HANGING ISOLATORS PER UNI-STRUT INCLUDED.  
 6. 3 YEAR EXTENDED WARRANTY FOR FAN MOTOR. PARTS ONLY. DOES NOT INCLUDE LABOR.



**CUSTOMER APPROVAL TO MANUFACTURE:**

proved as Noted  
 proved with NO Exception Taken  
 vise and Resubmitt  
 INATURE \_\_\_\_\_  
 Title \_\_\_\_\_ Date \_\_\_\_\_






JOB Tinpan Bakery	
LOCATION	Bladeford, ME,
DATE	8/18/2016
DWG #	5
JOB #	2745465
DRAWN BY RFC-21	