

HOOD INFORMATION - Job#2658653

HOOD NO.	TAG	MODEL	LENGTH	MAX. COOKING TEMP.	EXHAUST PLENUM RISER(S)						TOTAL SUPPLY CFM	HOOD CONSTRUCTION	HOOD CONFIG.		
					TOTAL EXH. CFM	WIDTH	LENG.	HEIGHT	DIA.	CFM			S.P.	END TO END	ROW
1		5412 SND-2-PSP-F	7' 5.00'	600 Deg.	1854			4'	14'	1854	-0.822'	1187	430 SS Where Exposed	ALONE	ALONE

HOOD INFORMATION

HOOD NO.	TAG	FILTER(S)				LIGHT(S)				UTILITY CABINET(S)				FIRE SYSTEM PIPING	HOOD HANGING WGT	
		TYPE	QTY.	HEIGHT	LENGTH	EFFICIENCY @ 9 MICRONS	QTY.	TYPE	WIRE GUARD	LOCATION	SIZE	FIRE SYSTEM TYPE	SIZE			ELECTRICAL MODEL #
1		Captrate Solo Filter	5	20"	16'	93% See Filter Spec.	3	Screw In Compact	ND	Right	12"x27"x24"	Ansul R102	3.0		YES	491 LBS

HOOD OPTIONS

HOOD NO.	TAG	OPTION
1		FIELD WRAPPER 17.00" High Front, Right BACKSPLASH 68.00" High X 102.00" Long 430 SS Vertical LEFT SIDESPLASH 80.00" High X 54.00" Long 430 SS Vertical BACKSPLASH - INSIDE CORNER 68.00" High X 2.00" Leg Length 430 SS Vertical LEFT END STANDOFF(FIN/SLP) 1" Wide 54" Long Insulated RIGHT QUARTER END PANEL 23" Top Width, 0" Bottom Width, 23" High 430 SS LEFT QUARTER END PANEL 23" Top Width, 0" Bottom Width, 23" High 430 SS INSULATION FOR BACK OF HOOD

PERFORATED SUPPLY PLENUM(S)

HOOD NO.	TAG	POS.	LENGTH	WIDTH	HEIGHT	RISER(S)				
						TYPE	WIDTH	LENG.	DIA.	CFM
1		Front	90"	20"	6"	MUA	8"	36"	593	0.158"
						MUA	8"	36"	593	0.158"

SPECIFICATION: CAPTRATE® GREASE-STOP® SOLO FILTER

THE CAPTRATE GREASE-STOP SOLO FILTER IS A SINGLE-STAGE FILTER FEATURING A UNIQUE S-BAFFLE DESIGN IN CONJUNCTION WITH A SLOTTED REAR BAFFLE DESIGN, TO DELIVER EXCEPTIONAL FILTRATION EFFICIENCY.

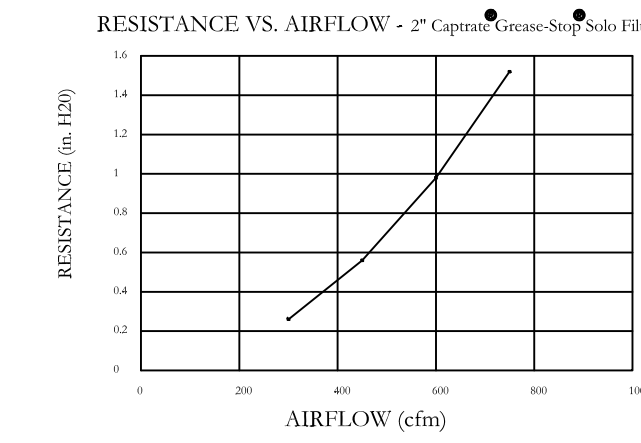
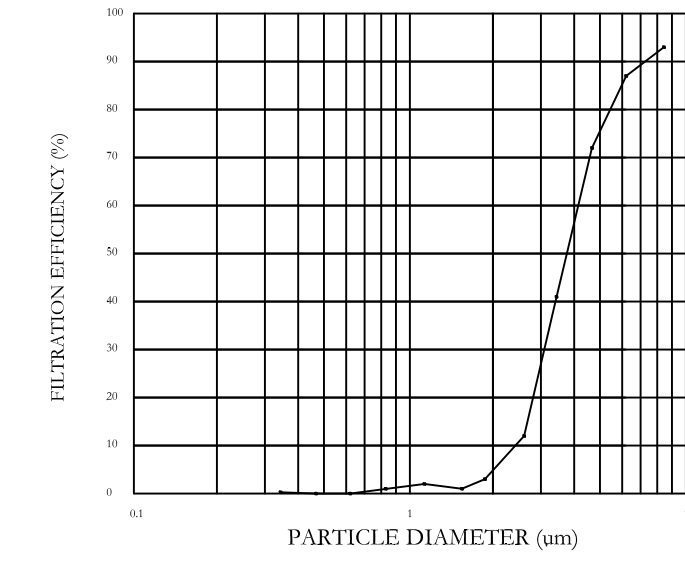
FILTER IS STAINLESS STEEL CONSTRUCTION, AND SIZED TO FIT INTO STANDARD 2-INCH DEEP HOOD CHANNEL(S).

UNITS SHALL INCLUDE STAINLESS STEEL HANDLES AND A FASTENING DEVICE TO SECURE THE TWO COMPONENTS WHEN ASSEMBLED.

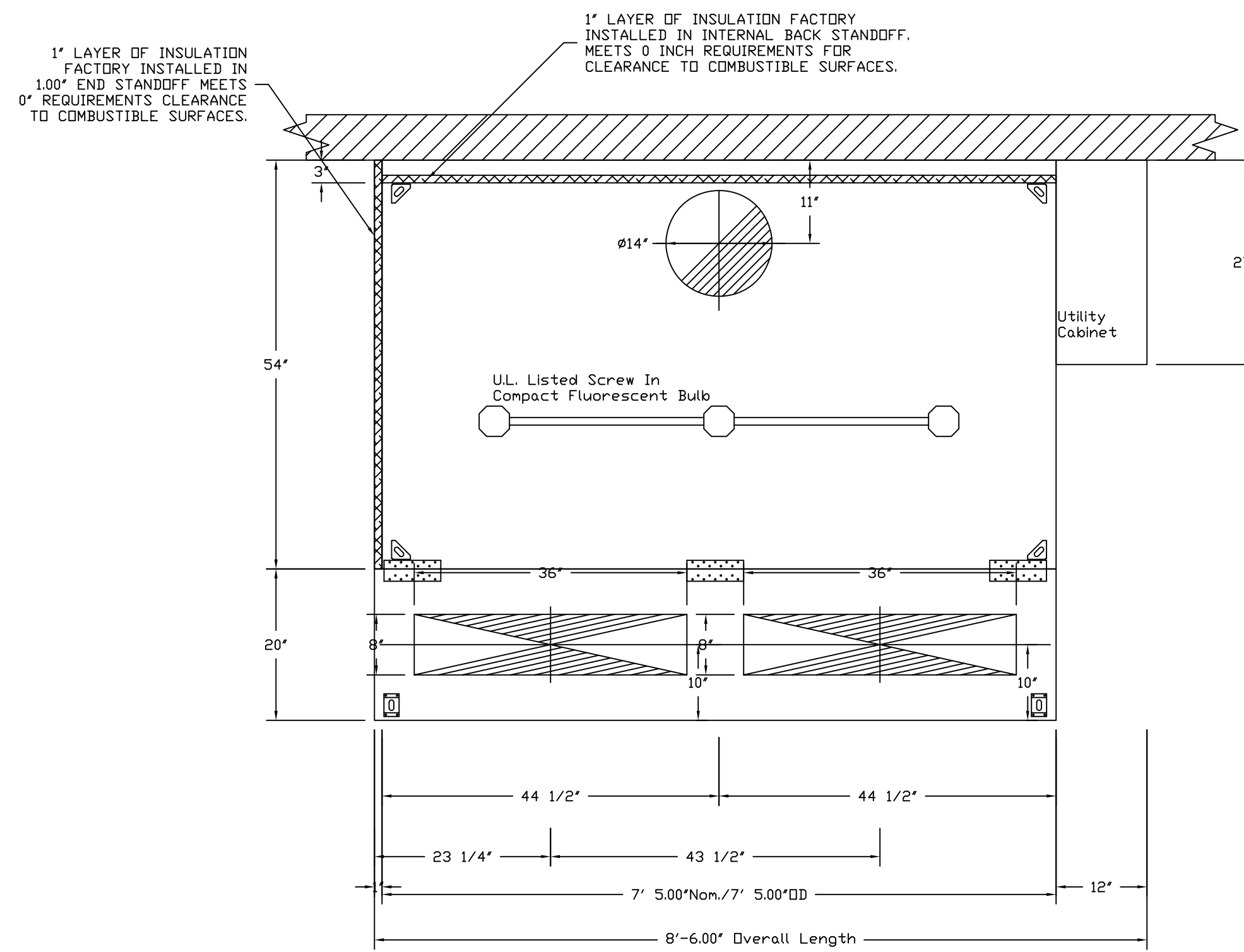
GREASE EXTRACTION EFFICIENCY PERFORMANCE SHALL REMOVE AT LEAST 75% OF GREASE PARTICLES FIVE MICRONS IN SIZE, AND 90% GREASE PARTICLES SEVEN MICRONS IN SIZE AND LARGER, WITH A CORRESPONDING PRESSURE DROP NOT TO EXCEED 1.0 INCHES OF WATER GAUGE.

THE CAPTRATE GREASE-STOP SOLO WAS TESTED TO ASTM STANDARD ASTM F2519-05.

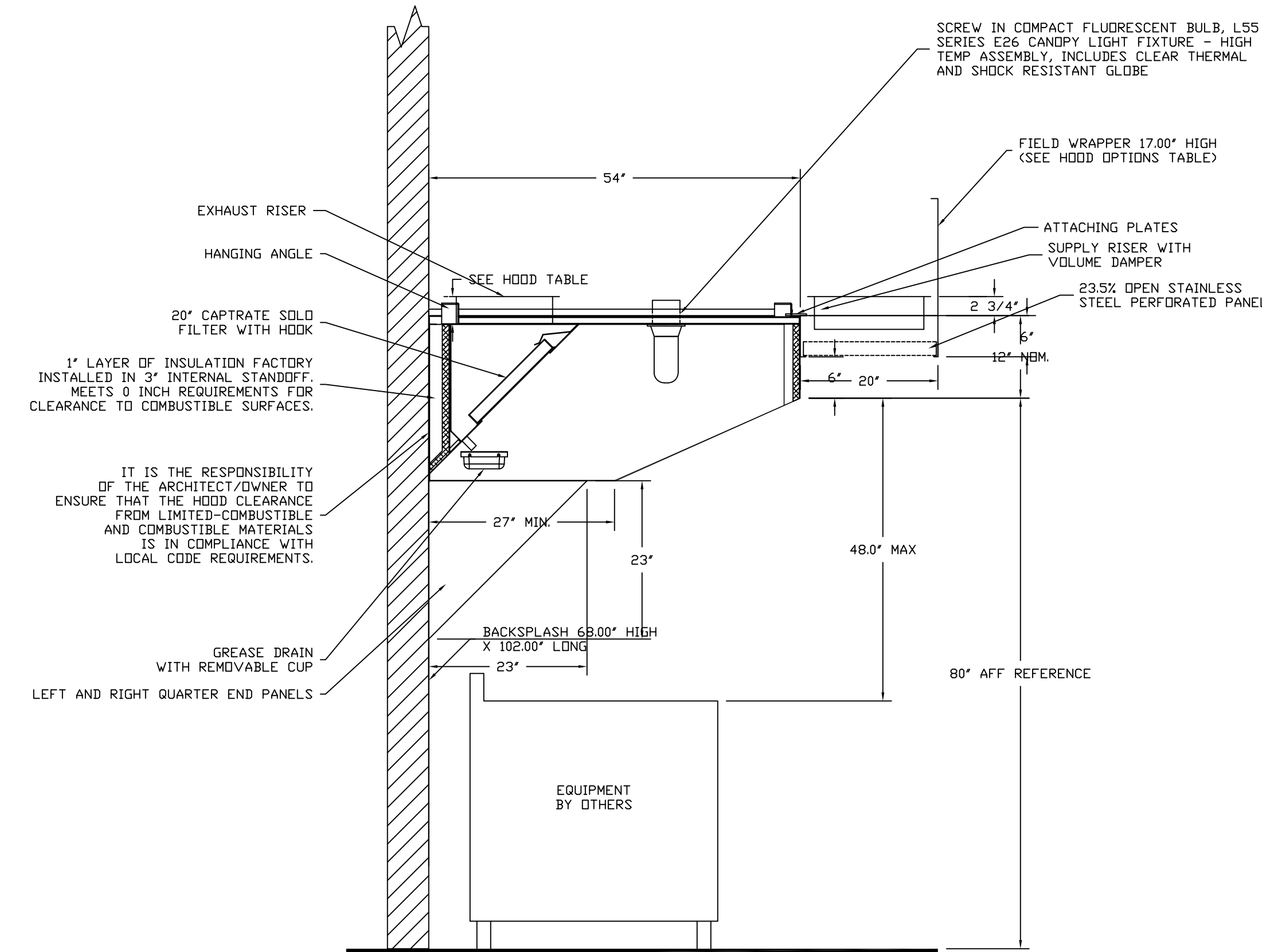
FILTER COLLECTION EFFICIENCY - 2" Captrate® Grease-Stop® Solo Filter



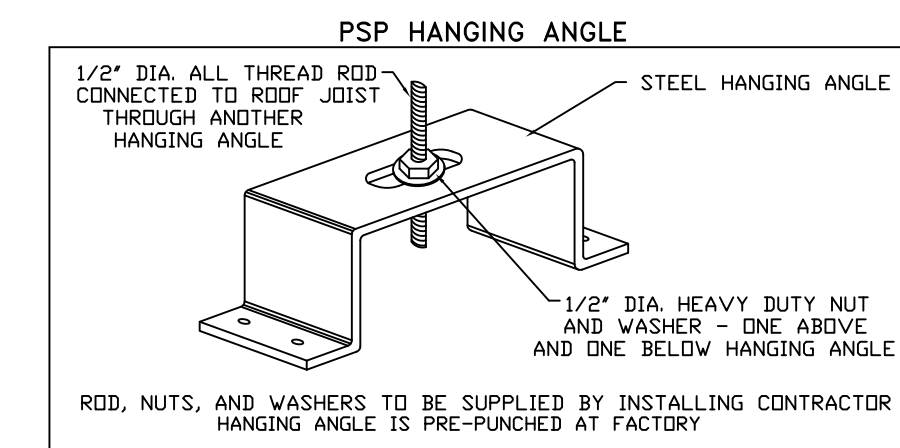
CAPTRATE FILTERS ARE BUILT IN COMPLIANCE WITH:
 NFPA #96
 NSF STANDARD #2
 UL STANDARD #1046
 INT. MECH. CODE (IMC)



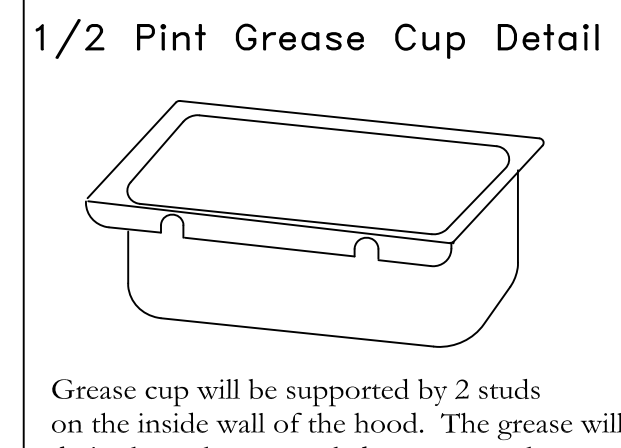
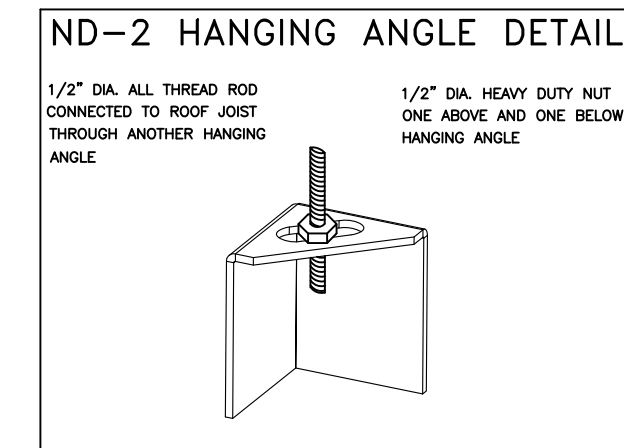
PLAN VIEW - Hood #1
7' 5.00" LONG 5412SND-2-PSP-F



SECTION VIEW - MODEL 5412SND-2-PSP-F
HOOD - #1



CAPTIVE-AIRE HOODS ARE BUILT IN COMPLIANCE WITH
 NSF
 NFPA #96
 UL 710 & ULC710 STANDARDS
 E.T.L. LISTED 3054804-001



REVISIONS	
DESCRIPTION	DATE

CAPTIVE

MAINE OFFICE

Tin Pan Bakery
897 Brighton Ave,
PORTLAND, ME, 04102

DATE: 5/16/2016
 DWG.#: 2658653
 DRAWN BY: BFC-21
 SCALE: 3/4" = 1'-0"
 MASTER DRAWING

SHEET NO.
1

PO Box 86, 179 South Rd., Topshfield, ME, 04480 PHONE: (207) 796-2590 FAX: (919) 227-5946 EMAIL: req21@captivate.com