

Fire System Information - Job#2658653

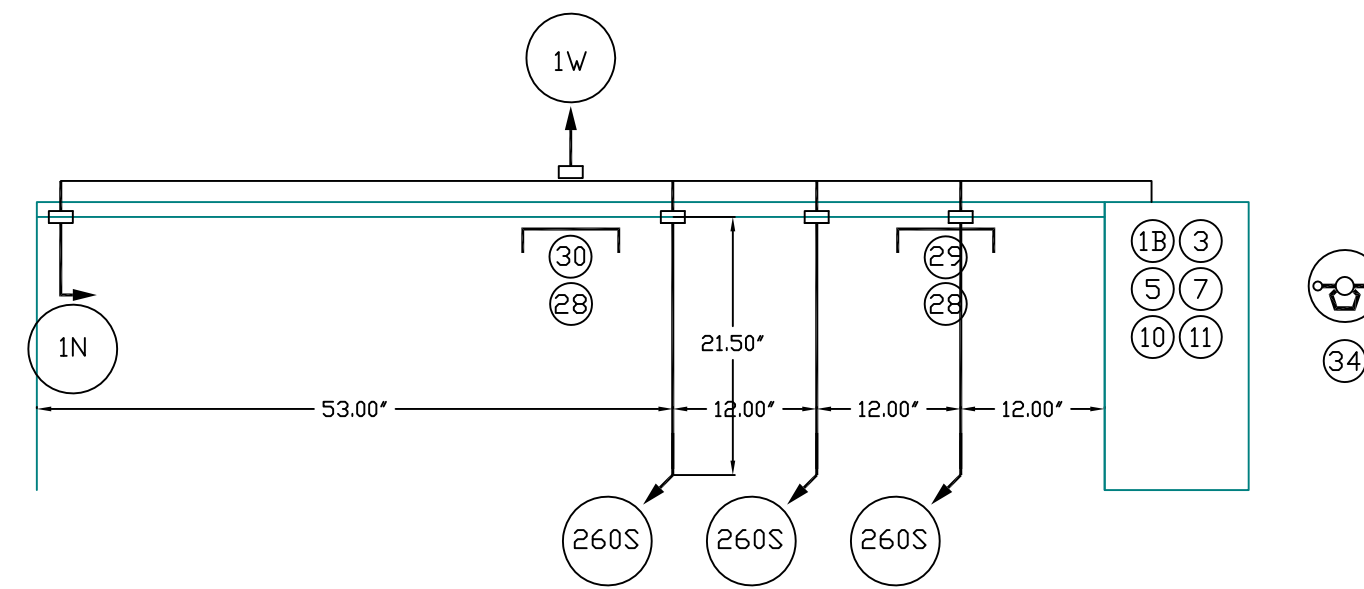
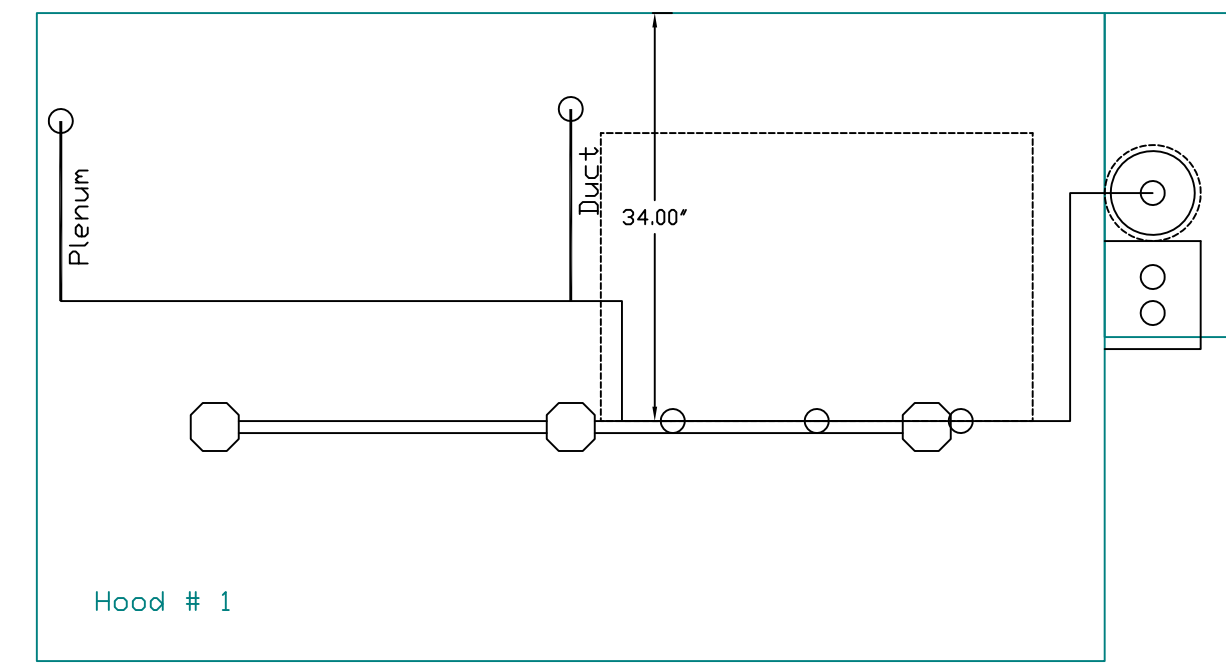
FIRE SYSTEM NO.	Tag	TYPE	SIZE	FLOW POINTS	INSTALLATION	
					SYSTEM	LOCATION ON HOOD
1		Ansul R102	3.0	8	Fire Cabinet Right	Right

GAS VALVE(S)

FIRE SYSTEM NO.	TAG	TYPE	SIZE	SUPPLIED BY
1		Mechanical	1.000	CaptiveAire Systems

Fire System Parts List Key

FIRE SYSTEM NO.	TAG	KEY NUMBER - PART DESCRIPTION	QTY. BY FACTORY	QTY. BY DIST.
1		0 - 0 - 43-15733 AIR CYLINDER ASSEMBLY - Air Cylinder and Tubing for Mechanical Gas Valves (Ansul)	1	0
		0 - 0 - METALCAP-CB BLOWOFF CAP - Metal	5	0
		1 - 1 - AT - 3.0 TANK(#1B) - 3.0 Gallon SS Tank (For use with Automan Release, Actuator, or SS Enclosure (UL/ULC))	1	0
		3 - 3 - ANS-DEM REGULATED RELEASE - Ansul Regulated Mechanical Release/Bracket Assembly (79493), DEM, R-102, Cartridge Detection Included	1	0
		5 - 5 - LIQ-3.0 AGENT - Ansulex Low PH Wet Chemical Agent, 3 Gallon (UL) 79372	0	1
		7 - 7 - 101-20 CARTRIDGE - Carbon Dioxide 101-20, 3 Gallon Cartridge (R-102)	0	1
		10 - 10 - TLINK LINK - Test Link (1 test link)	0	1
		11 - 11 - MICRO-SDA MICROSWITCH KIT- Includes 2 switches and Mounting Hardware. Single Dual Electric Switch, One Standard Switch, One Alarm Duty Switch 437155	1	0
		14 - 14 - 419336 NOZZLE - 1W Nozzle, Duct/Appliance (Replaces ANSUL Part# 419347, CAS Part# 419336) A0001266	1	0
		16 - 16 - 419335 NOZZLE - 1N Nozzle, Plenum/Appliance (Replaces ANSUL Part# 419346, CAS Part# 419335) A0001265	1	0
		24 - 24 - 419341 NOZZLE - 260 Nozzle, Appliance (Replaces ANSUL Part# 419352, CAS Part# 419341) A0001271	3	0
		25 - 25 - 418569 NOZZLE ADAPTOR - Swivel Nozzle Adaptor (Replaces CAS Part # 418569) A0001274	3	0
		26 - 26 - QSA-3/8 QUIK SEAL - 3/8" (UL)	5	0
		27 - 27 - QPSA-1/2 PULLEY SEAL - 1/2" Hood Seal (UL)	1	0
		28 - 28 - S-DET DETECTOR - Series (Scissor Linkage) NEW#435547/435548 (OLD#417369/434480)	2	0
		29 - 29 - ANS-360FL FUSIBLE LINK - 360deg F, R-102 and PIRANHA	1	0
		30 - 30 - ANS-500FL FUSIBLE LINK - 500deg F, R-102 and PIRANHA	1	0
		34 - 34 - RPS-A REMOTE PULL STATION - Red composite (without wire rope) 434618 (Old Macola #06-4835)	1	0
		35 - 35 - PE-LT PULLEY ELBOW - Low Temp. Pulley Elbow, Set Screw Type ANSUL Part #415670	2	0
		36 - 36 - PE-HT PULLEY ELBOW - High Temp Pulley Elbow, Compression Type	1	0

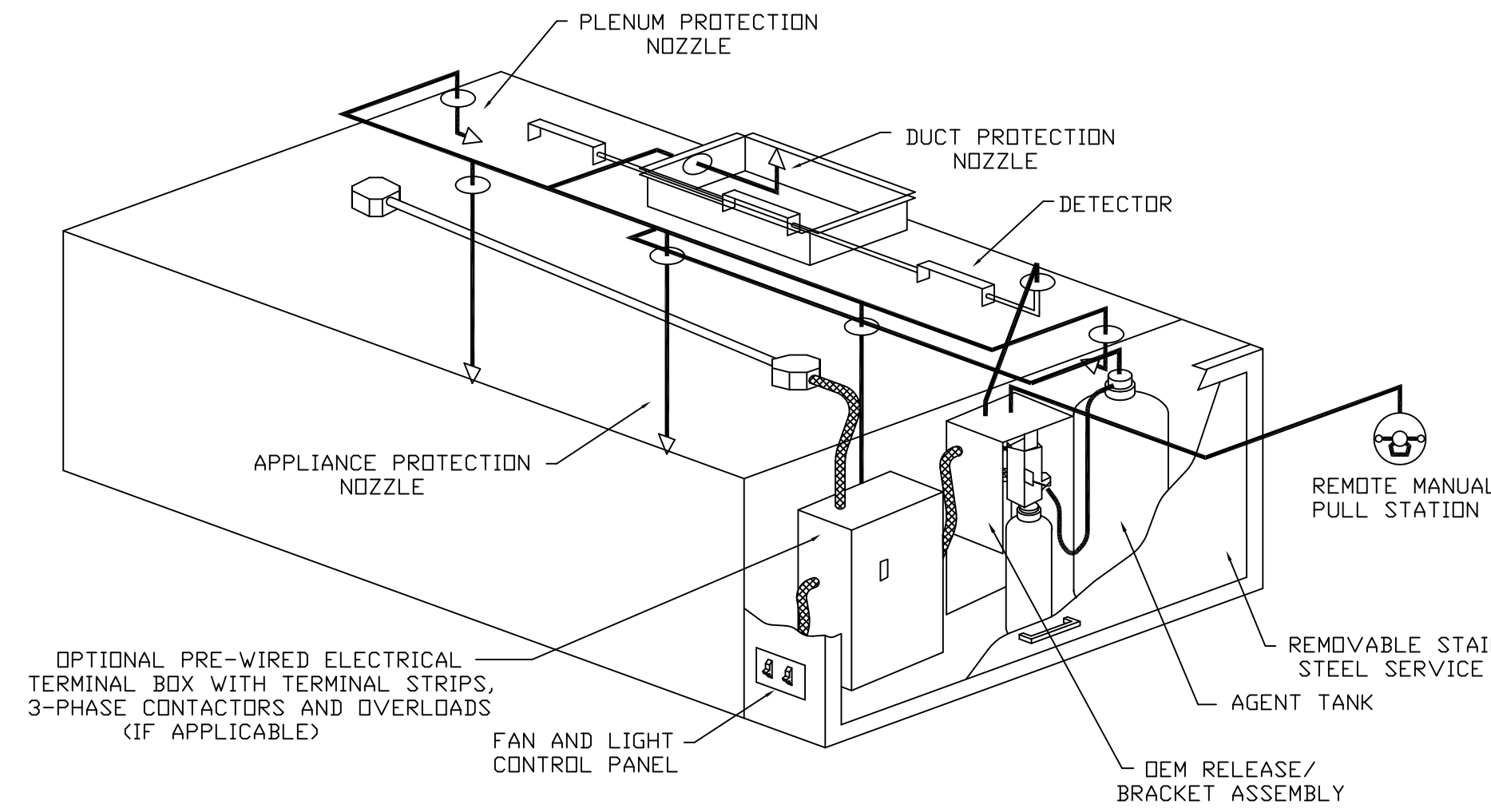


Range-Shelf (18" min. from grate) High Proximity 36.00" L x 24.00" D

NOTES

- FIELD PIPE DROPS AS SHOWN
- SLEEVING, ELBOWS, TEES, AND NOZZLES SUPPLIED BY CAS
- RELOCATE NOZZLES IF FLOW PATTERN IS BLOCKED BY SHELVING, SALAMANDERS, ETC.
- MAXIMUM 9 ELBOWS IN SUPPLY LINE.
- MINIMUM 72 INCHES OF AGENT LINE FROM TANK TO FIRST NOZZLE.
- IF APPLICABLE, PRE-PIPED CHARBROILER DROPS ARE SHIPPED LOOSE.
- FACTORY PIPING EXTENDS A MAXIMUM OF 6" ABOVE THE TOP OF THE HOOD.
- APPLIANCE DIMENSIONS LISTED REPRESENT THE COOKING SURFACE SIZE, NOT THE OVERALL APPLIANCE SIZE.
- THIS FIRE SYSTEM COMPLIES WITH U.L. 300 REQUIREMENTS

Job #: 2658653
 Job Name: Tin Pan Bakery
 Drawn By:
 System Size: ANSUL-3.0 Total FP required: 8
 Hood # 1 7' 5.00" Long x 54" Wide x 12" High
 Riser # 1 Size: 14" Dia.
 Hood # 1 Metal Blow-Off Caps included.



TYPICAL ANSUL R-102 SYSTEM LAYOUT

Job #: 2658653
 Job Name: Tin Pan Bakery
 Drawn By:
 System Size: ANSUL-3.0 Total FP required: 8
 Hood # 1 7' 5.00" Long x 54" Wide x 12" High
 Riser # 1 Size: 0" x 0"

INCLUDES: FIELD INSTALLATION AND HOOKUP DURING NORMAL BUSINESS HOURS BY CERTIFIED INSTALLERS ONLY IN THE LOCATION NOTED ABOVE. TWO SITE VISITS ONLY (ONE VISIT TO SET PULL STATION & SYSTEM HOOKUP AND ONE VISIT FOR ONE TEST). ADDITIONAL VISITS WILL RESULT IN ADDITIONAL CHARGES. ONE MECHANICAL GAS VALVE PER SYSTEM AT A MAXIMUM SIZE OF 2" PERMIT, AND SYSTEM TEST.
 EXCLUDES: UNION LABOR & PREVAILING WAGE (LABOR & WAGES WILL BE ADDED IF APPLICABLE), GAS VALVE INSTALLATION, ELECTRICAL HOOKUP AND CONNECTIONS, HANGING OF FIRE CABINET, SHUNT TRIP, HANDHELD EXTINGUISHER(S), ON-SITE RE-PIPING DUE TO EQUIPMENT LAYOUT CHANGES.

NOTES

- FIELD PIPE DROPS AS SHOWN
- SLEEVING, ELBOWS, TEES, AND NOZZLES SUPPLIED BY CAS
- RELOCATE NOZZLES IF FLOW PATTERN IS BLOCKED BY SHELVING, SALAMANDERS, ETC.
- MAXIMUM 9 ELBOWS IN SUPPLY LINE.
- MINIMUM 72 INCHES OF AGENT LINE FROM TANK TO FIRST NOZZLE.
- IF APPLICABLE, PRE-PIPED CHARBROILER DROPS ARE SHIPPED LOOSE.
- FACTORY PIPING EXTENDS A MAXIMUM OF 6" ABOVE THE TOP OF THE HOOD.
- APPLIANCE DIMENSIONS LISTED REPRESENT THE COOKING SURFACE SIZE, NOT THE OVERALL APPLIANCE SIZE.
- THIS FIRE SYSTEM COMPLIES WITH U.L. 300 REQUIREMENTS

SPECIFICATIONS

THE RESTAURANT FIRE SUPPRESSION SYSTEM SHALL BE THE PRE-ENGINEERED TYPE WITH A FIXED NOZZLE AGENT DISTRIBUTION NETWORK. IT SHALL BE LISTED WITH UNDERWRITERS LABORATORIES, INC. (UL)

THE SYSTEM SHALL BE CAPABLE OF AUTOMATIC DETECTION AND ACTUATION WITH LOCAL OR REMOTE MANUAL ACTUATION. ACCESSORIES SHALL BE AVAILABLE FOR MECHANICAL OR ELECTRICAL GAS LINE SHUT-OFF APPLICATIONS.

THE EXTINGUISHING AGENT SHALL BE A POTASSIUM CARBONATE, POTASSIUM ACETATE-BASED FORMULATION DESIGNED FOR FLAME KNOCKDOWN AND SECUREMENT OF GREASE RELATED FIRES. IT SHALL BE AVAILABLE IN PLASTIC CONTAINERS WITH INSTRUCTIONS FOR LIQUID AGENT HANDLING AND USAGE.

THE REGULATED RELEASE MECHANISM SHALL BE COMPATIBLE WITH A FUSIBLE LINK DETECTION SYSTEM. THE FUSIBLE LINK SHALL BE SELECTED AND INSTALLED ACCORDING TO THE OPERATING TEMPERATURE IN THE VENTILATING SYSTEM. THE FUSIBLE LINK SHALL BE SUPPORTED BY A DETECTOR BRACKET/LINKAGE ASSEMBLY.

LEGEND - FIRE CABINET ANSUL SYSTEM

- 1A 1.5 GALLON TANK
- 1B 3 GALLON TANK
- 2 DEM AUTOMAN RELEASE
- 3 DEM REGULATED RELEASE
- 4 DEM REGULATED ACTUATOR
- 5 ANSULEX LIQUID AGENT (3 GAL.)
- 6 ANSULEX LIQUID AGENT (1.5 GAL.)
- 7 CARTRIDGE (101-20)
- 8 CARTRIDGE (101-10)
- 9 CARTRIDGE (101-30)
- 9A CARTRIDGE (LT-A-101-30)
- 9B DOUBLE TANK CARTRIDGE
- 10 TEST LINK
- 11 DOUBLE MICROSWITCH
- 12 HOSE ASSEMBLY
- 1100 DUCT NOZZLE (430913)
- 2W DUCT NOZZLE (419337)
- 1W NOZZLE ASSEMBLY (419336)
- 1F NOZZLE ASSEMBLY (419333)
- 1N NOZZLE ASSEMBLY (419335)
- 1/2N NOZZLE ASSEMBLY (419334)
- 3N NOZZLE ASSEMBLY (419338)
- 245 NOZZLE ASSEMBLY (419340)
- 230 NOZZLE ASSEMBLY (419339)
- 2120 NOZZLE ASSEMBLY (419343)
- 290 NOZZLE ASSEMBLY (419342)
- 260 NOZZLE ASSEMBLY (419341)
- 28 DETECTOR BRACKET
- 29 LOW TEMP FUSIBLE LINK
- 30 HIGH TEMP FUSIBLE LINK
- MGV MECHANICAL GAS VALVE
- EGV ELECTRICAL GAS VALVE
- 34 REMOTE MANUAL PULL STATION
- S SWIVEL ADAPTOR

REVISIONS	
DESCRIPTION	DATE

MAINE OFFICE

PO Box 86, 179 South Rd., Topshfield, ME, 04490 PHONE: (207) 796-2590 FAX: (919) 227-5946 EMAIL: reg21@captiveware.com

Tin Pan Bakery
 897 Brighton Ave,
 PORTLAND, ME, 04102

DATE: 5/16/2016
DWG.#: 2658653
DRAWN BY: BFC-21
SCALE: 3/4" = 1'-0"
MASTER DRAWING
SHEET NO. 2