

GOSSEN LIVINGSTON
ASSOCIATES, P.A.

420 S. EMPORIA, WICHITA, KANSAS 67202
ARCHITECTS • PLANNERS • ENGINEERS (316) 265-9367

CITY OF PORTLAND
APPROVED SITE PLAN
SUBJECT TO DEPARTMENTAL
CONDITIONS
DATE OF APPROVAL 6/16/87



ADDITIONS TO
DISTRIBUTION CENTER
PORTLAND, MAINE

SITE PLAN

JOB NO. 307.010

DATE

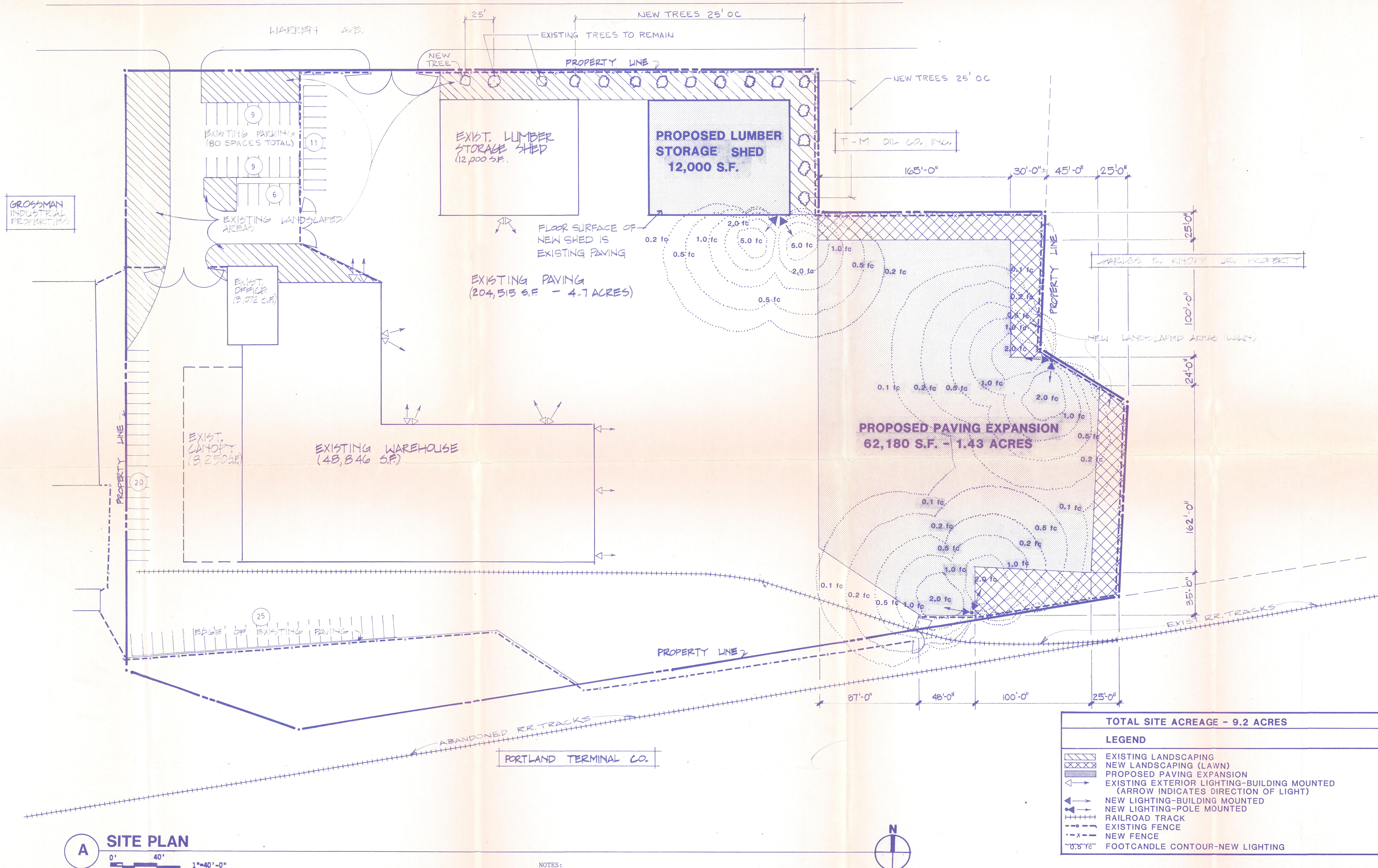
DRAWN 6/5/87

CHECKED DLU

JUN 5 1987

1
OF
1

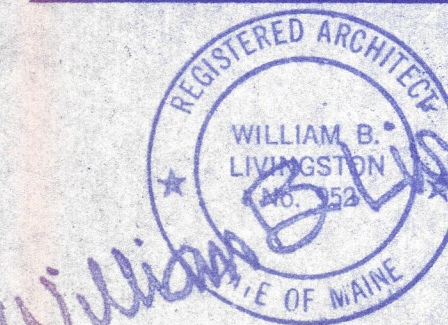
ECJ JWB 5238.00



APPROVED
PLANS



420 S. EMPORIA, WICHITA, KANSAS 67202
ARCHITECTS ■ PLANNERS ■ ENGINEERS (316) 265-9361



SEN. NOTES:

1. PATH EXISTING ASPHALT
NO REQUIRED
2. REPLACE ALL TREES WITHIN
PROPERTY LINE TO THE
NORTH OF NEW STORAGE
BLDG. WHICH ARE DAMAGED
BY CONTAMINATION.
RESURFACE & RESEED
DAMAGED TURF AREAS TO
NORTH & EAST OF NEW
STORAGE BLDG. CONSTRUCT
3. FENCE FABRIC IN GOOD
CONDITION FROM EXISTING
FENCE REMOVAL MAY BE
RE-USED @ NEW FENCE
LOCATIONS.

12/11/07



ADDITIONS TO
DISTRIBUTION CENTER IN
PORTLAND, MAINE

SITE PLAN &
SITE GRADING PLAN

JOB NO. 307.010
DATE
DRAWN JWH
CHECKED TRG

OF

