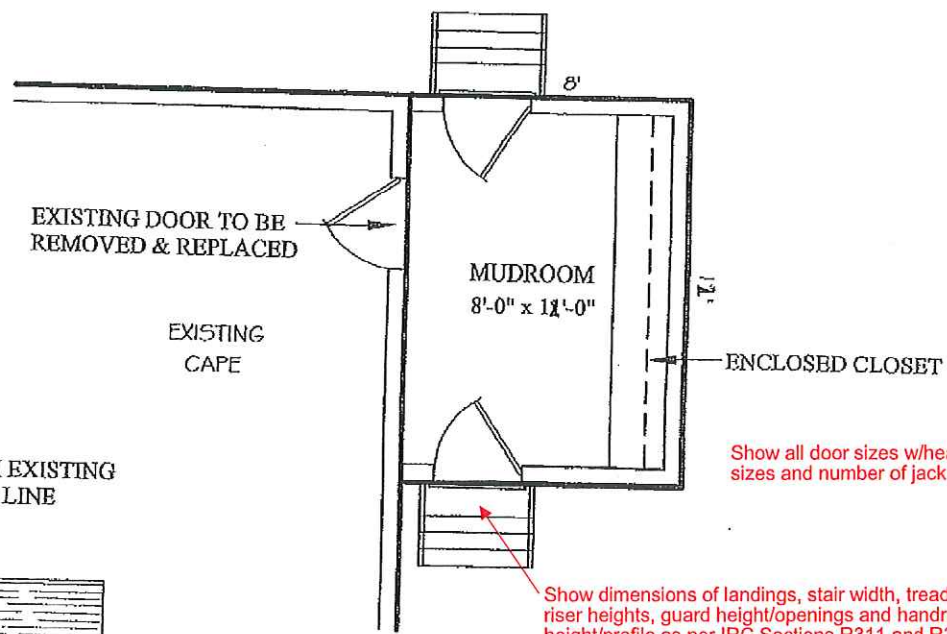
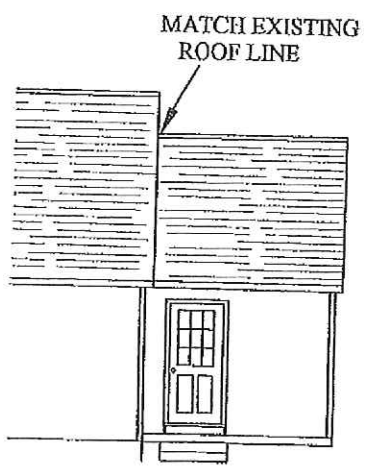


SITE PLAN
SCALE 1"=10'



FLOOR PLAN
SCALE 1"=20'



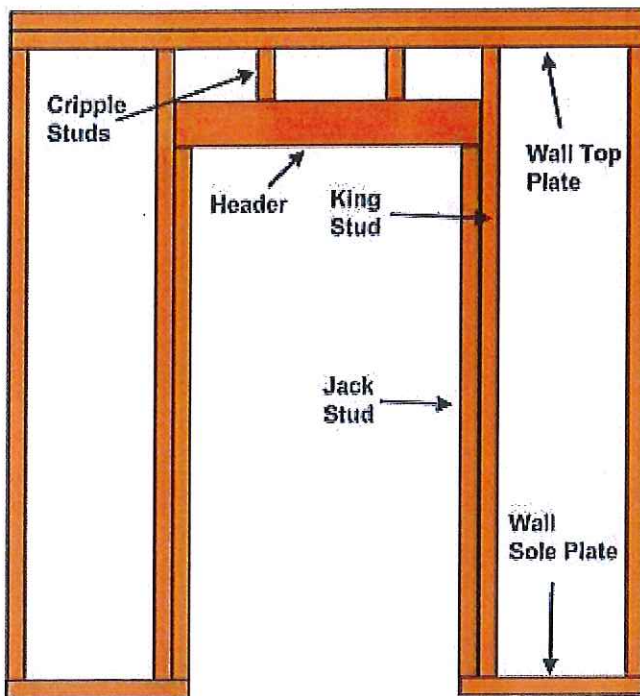
ELEVATION

SITE PLAN
55 GLEN HAVEN WEST
PORTLAND, MAINE
TM 277-I-9
SCALE: 1" = 10" DATE: JUNE 2017

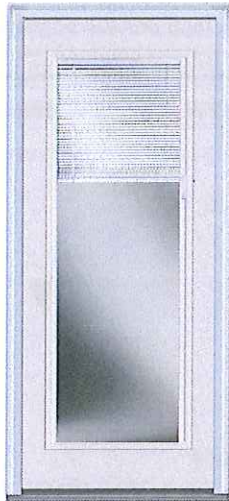
Show all door sizes w/header sizes and number of jack studs

2 doors 30" x 80" with rough opening 32" x 82.25"

2 jack studs on each side with cripple studs as shown in attached photo



Model # EMJ686BLLPR26L Internet #205820788



MMI Door 30 in. x 80 in. Internal Blinds Left-Hand Full Lite Classic Primed Steel Prehung Front Door

★★★★★ (1)

[Write a Review](#)

[Questions & Answers \(4\)](#)

\$ **685⁶³** /each

Product Overview

Milliken Millwork Majestic Steel Front Door unit comes with our MSystem 2-warranty on both the Door Component and the Base Prehung System. [Full Description](#)

[Share](#)

[Save to List](#)

[Print](#)

Quantity

Not in Your Store - We'll Ship It There

We'll Ship It to You

Add to Cart

Add to Cart

We'll send it to Portland for free pickup

Standard shipping

Available for pickup
October 10 - October 13

Expect it
October 9 - October 13

[Check Nearby Stores](#)

[See Shipping Options](#)

Or buy now with

We're unable to ship this item to:
AK, GU, HI, PR, VI

Easy returns in store and online
[Learn about our return policy](#)

Product Overview

Milliken Millwork Majestic Steel Front Door unit comes with our MSystem 2-warranty on both the Door Component and the Base Prehung System, as well as a 10-year warranty on the Glass Lite. All of our Majestic Steel doors

are galvanized to resist rust and corrosion, are comprised of 24-Gauge, high quality steel with 22-Gauge steel stiles and rails for additional strength and security and come with a one-piece, high density polystyrene core delivering excellent insulation allowing it to meet or exceed current energy code standards. Door size is 30 in. x 80 in. Unit dimension is 31.5 in. x 81.75 in. The suggested rough opening is 32 in. x 82.25 in. This unit comes with a 4-9/16 in. wide primed Finger Jointed frame.

- Jeld-Wen steel single door
- Door size: 30 in. x 80 in.
- Unit dimension: 31.5 in. x 81.75 in.
- Suggested rough opening: 32 in. x 82.25 in.
- Prehung on 4-9/16 in. primed finger jointed frame
- Glass description: internal white blinds are encased in clear, tempered glass
- Door unit primed white
- Left-hand/inswing
- 3 satin nickel hinges - 2-1/8 in. entry/deadboltd bore prep - locks sold separately
- Will meet or exceed federal guidelines for energy efficiency (where and if applicable)
- Left hand in-swing door handing - standing on the inside of your home, if your hinge pins are on your right, you have a left hand in-swing
- [Click here to check out our project guide on installing an entry door](#)
- [Click here to learn more about buying exterior doors](#)

Info & Guides

[Energy Guide](#)

[Installation Guide](#)

[Instructions / Assembly](#)

[Product Brochure](#)

[Specification](#)

[Warranty](#)

You will need Adobe® Acrobat® Reader to view PDF documents. Download a free copy from the Adobe Web site.

Specifications

Dimensions

Door Height (in.)	80
Door Thickness (in.)	1.75
Door Width (in.)	30
Jamb Size (in.)	4-9/16"
Rough Opening Height (In.)	82.25

4

Show dimensions of landings, stair width, tread depths, riser heights, guard height/openings and handrail height/profile as per IRC Sections R311 and R312.

See attached for stair tread depth and height

Handrails will be 34"-36" high with balusters 4" apart

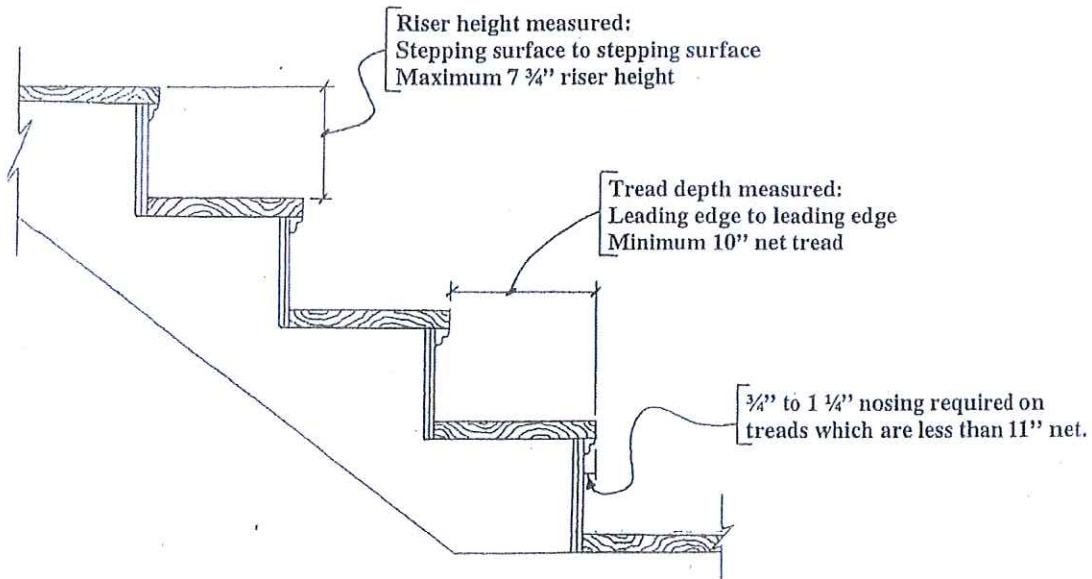
The landing will be 4 ft x 4 ft and the footing will be on cement sauna tubes for frost

TREAD & RISER DIMENSIONS
ONE & TWO FAMILY
2003 INTERNATIONAL RESIDENTIAL CODE
SECTION R311.5.3 TREADS & RISERS

In occupancies in 1 and 2 family dwellings (Use Group R-3) and in accessory occupancies (shed, garages, etc.) to 1 and 2 family dwellings the following are the tread and riser requirements:

The MAXIMUM riser height shall be 7 ¾" and the minimum riser height shall be 4". The MINIMUM tread depth shall be 10" (measured from leading edge of tread to leading edge of tread). A nosing not less than ¾" but not more than 1 ¼" SHALL be required on treads where the depth is less than 11". Openings in risers shall not exceed 4".

Correct method of measuring treads and risers:



Please note: To achieve a minimum 10" net tread the stringer must be cut to 10".



7

Provide complete cross section of proposed addition showing framing sizes, spacing and connections.

Include entire wall and roof assemblies (siding, roofing, sheathing, insulation, vapor retarder, interior finishes)

Show insulation locations and values as per IECC climate zone 6.

Roof rafters 2x8 and 16" on center with strapping

15" wide R19 Owens Corning insulation on walls

15" wide R30 Owens Corning attic insulation

Polywrap on interior walls with sheetrock

2 x 10 floor joists with a 2x10 carrying beam (three 2x10's together)

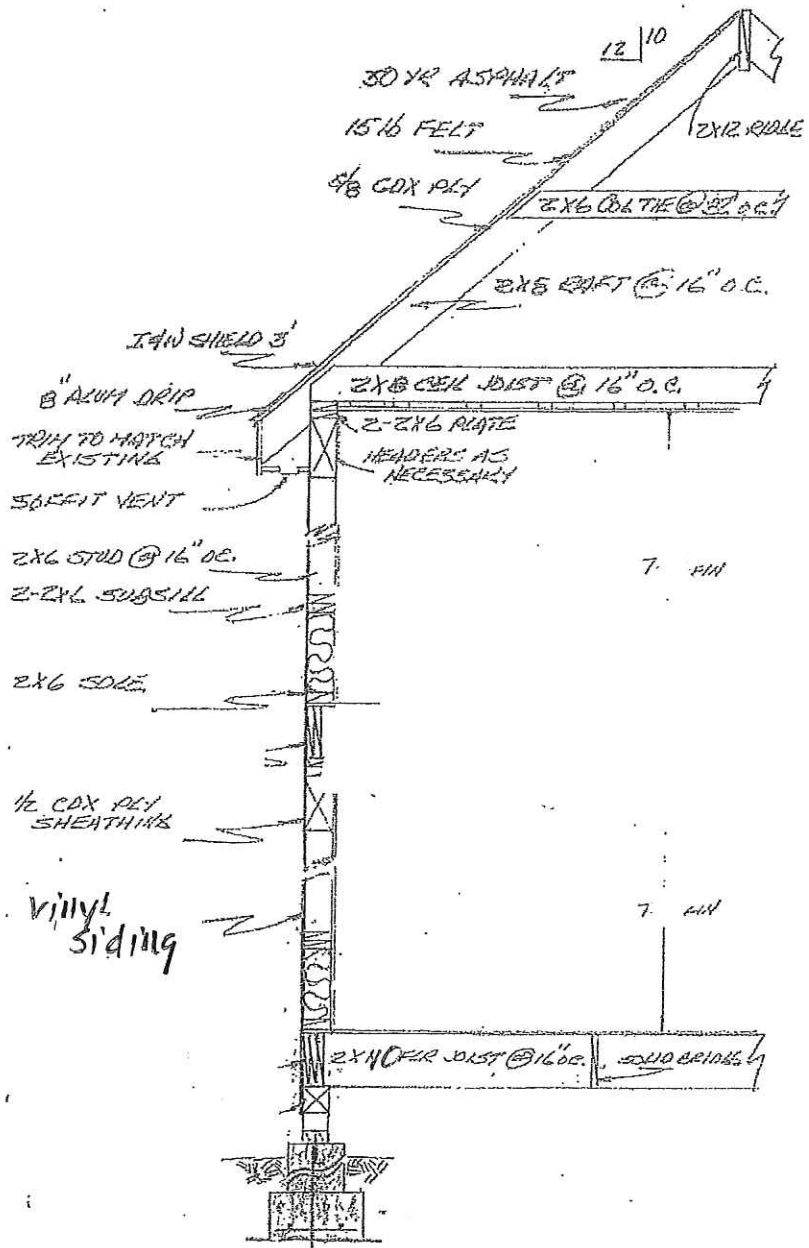
Subfloor $\frac{3}{4}$ " tongue and groove

Exterior wrapped in Typar with $\frac{3}{4}$ inch foam insulation and vinyl siding.

Walls 2x6 and 16" on center

No windows

Please see approximate drawing for a visual and roof specs



TYPICAL WALL SECTION
SCALE 3/8" = 1'-0"

Show foundation anchorage
as per IRC Section R403.1.6

Show reinforcement for foundation
walls as per IRC Section R404.1.2.2

Show under floor space venting and
access as per IRC Section R408

1" x 8" anchor bolt 6 ft 0"

Show required frost depth of
48" (min.) below finish grade.

49 " depth- please see attached for drawings and answers to above questions.

Mike Paul foundations will be pouring

Drilling and pinning to foundation

18"x8" footing

5'x8" walls

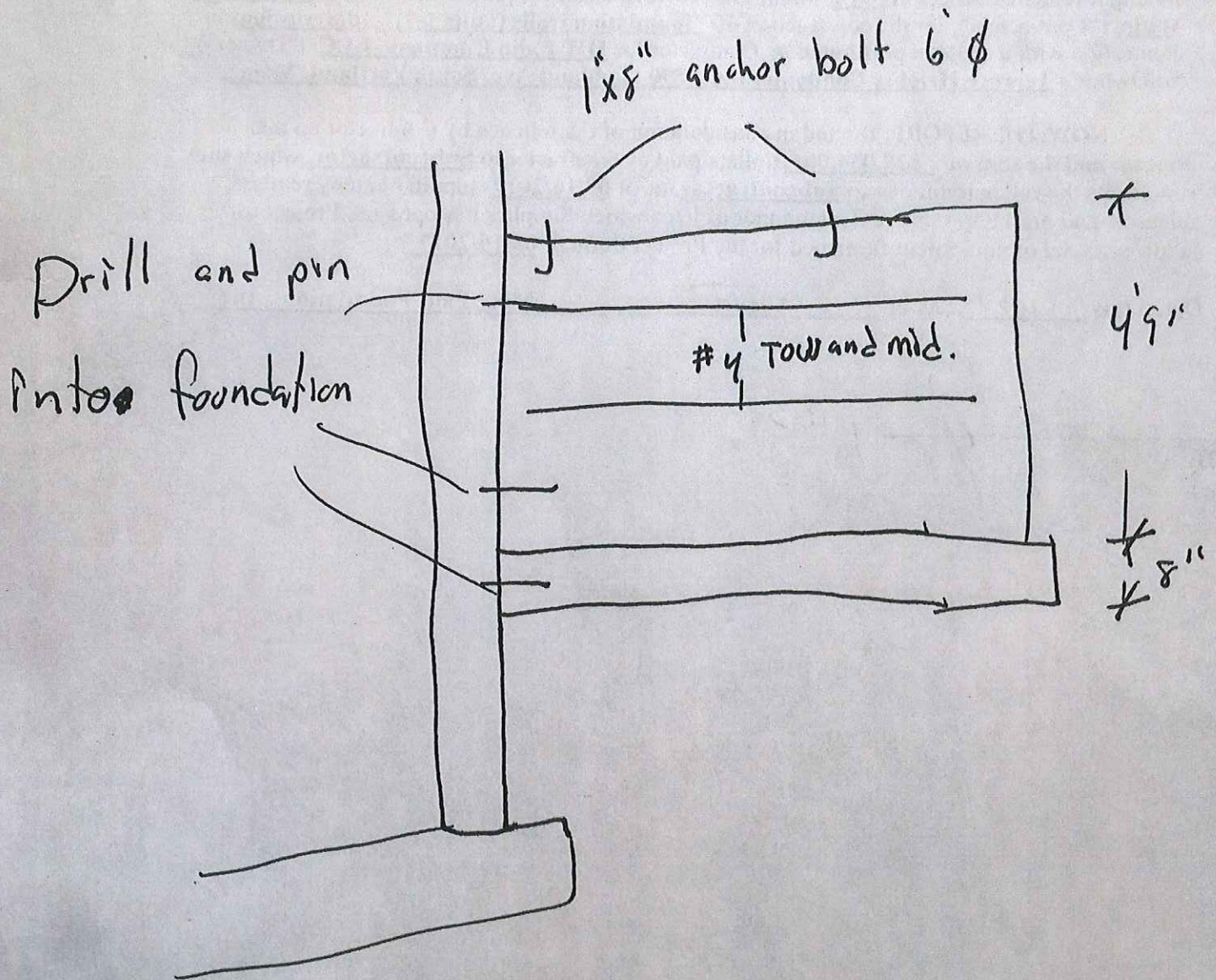
2 #4 rebar middle and top of wall

We will also be pouring a 2" vapor barrier with poly.

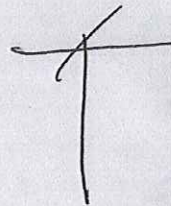
permit application 2017 01226

Bruce Little 35 Glen Haven Rd

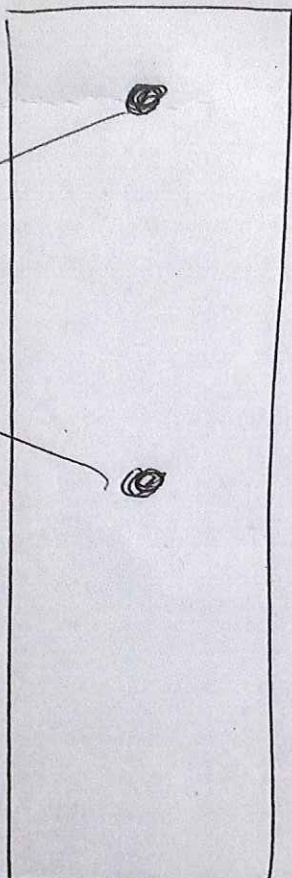
Foundation Drawing From Mike Paul Foundations



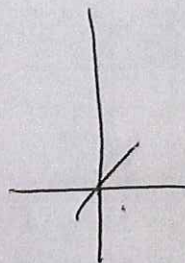
8"



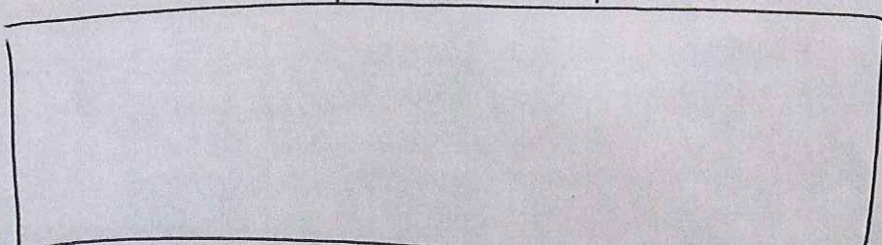
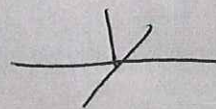
#4
1 row
1 row



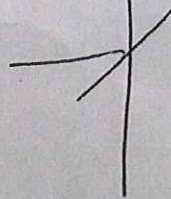
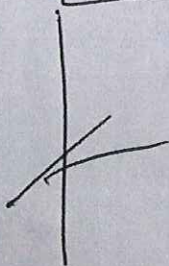
4'9"



8"



15"



Page 12