

Walls + insulation

Provide complete cross section of proposed addition showing framing sizes, spacing and connections.

Include entire wall and roof assemblies (siding, roofing, sheathing, insulation, vapor retarder, interior finishes)

Show insulation locations and values as per IECC climate zone 6.

Roof rafters 2x8 and 16" on center with strapping

15" wide R30 Owens Corning insulation on walls

15" wide R49 Owens Corning attic insulation

Polywrap on interior walls with sheetrock

2 x 10 floor joists with a 2x10 carrying beam (three 2x10's together)

Subfloor 3/4" tongue and groove

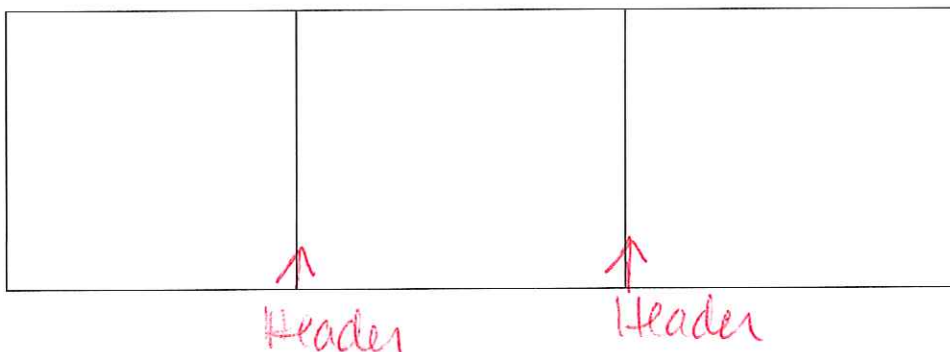
Exterior wrapped in Typar with 3/4" inch foam insulation and vinyl

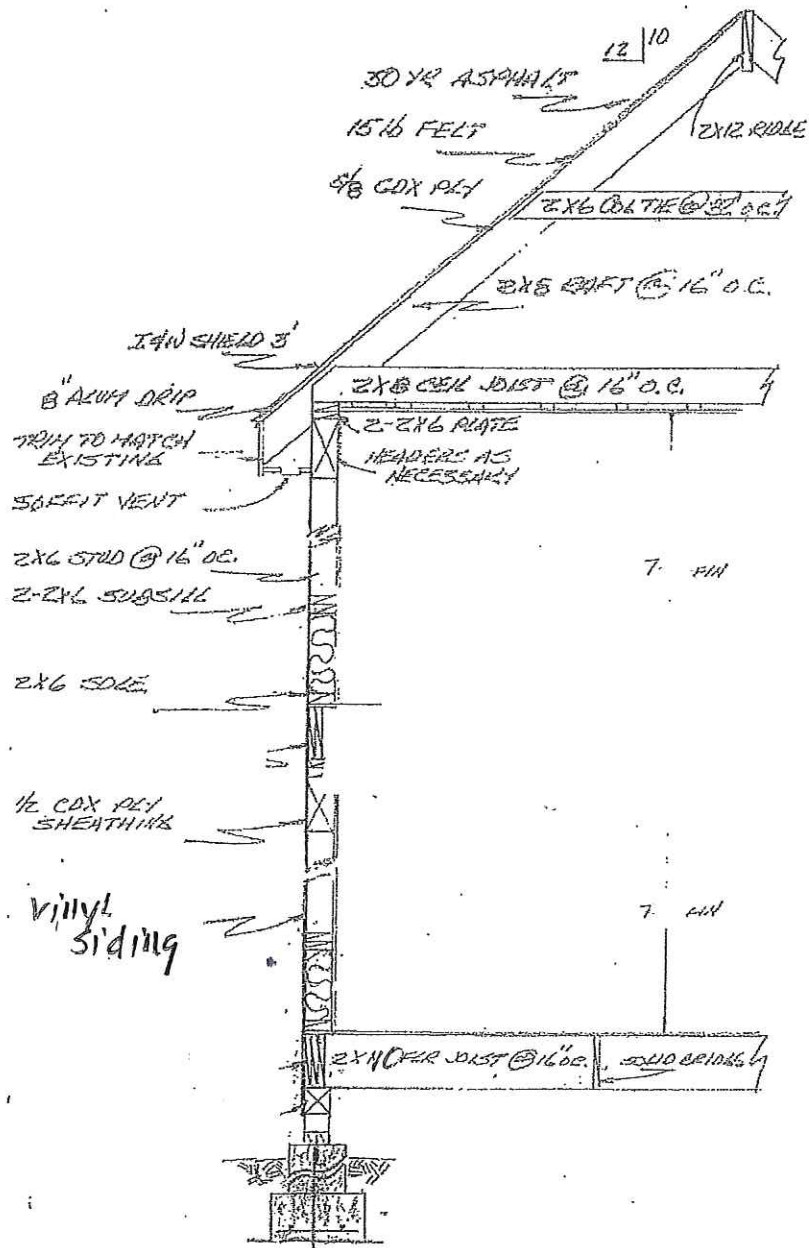
siding. Walls 2x6 and 16" on center

No windows

Please see approximate drawing for a visual and roof specs

12 feet wide so ----- Headers at 4 feet and 8 feet





TYPICAL WALL SECTION
SCALE 3/8" = 1'-0"