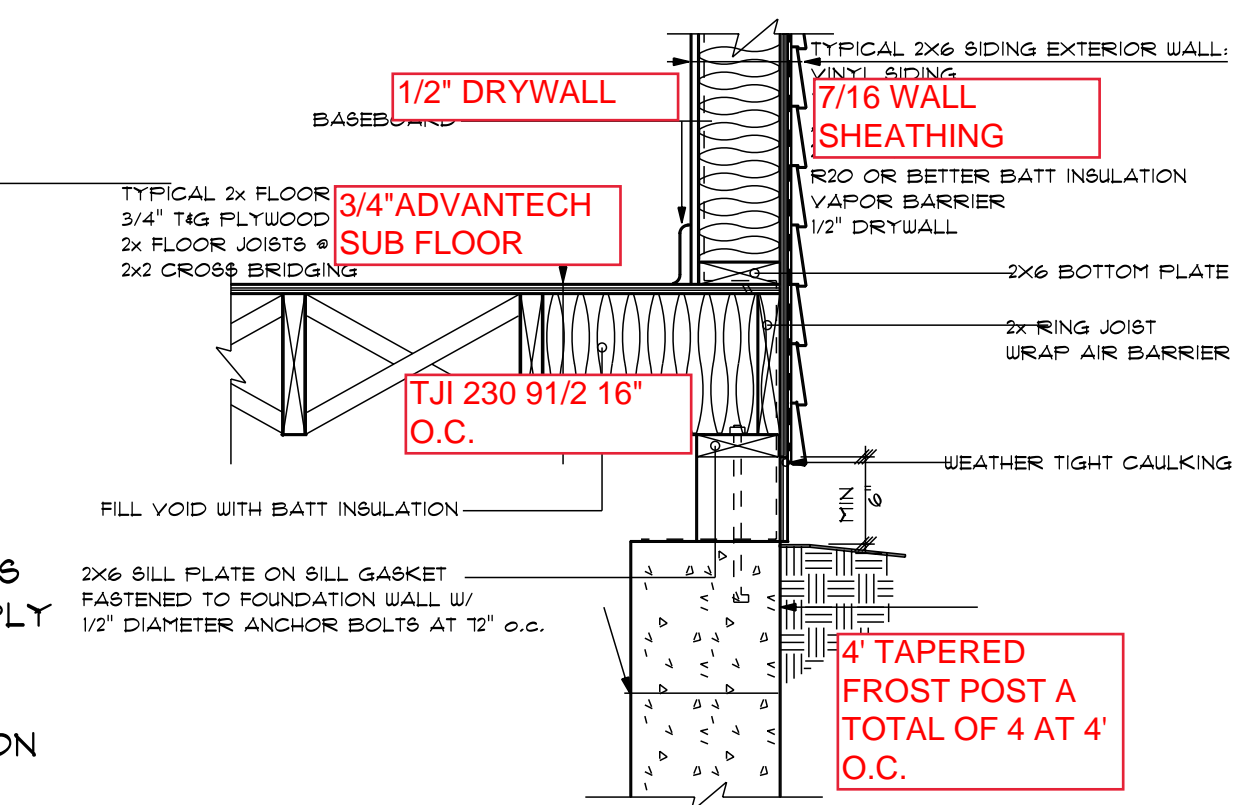


SPECIFY RAIL IF REQUIRED:

NUMBER OF TREADS: 3 TREADS 11 1/2"
TREAD SIZE:
NUMBER OF RISERS: 4 RISERS 7 1/4"
RISER SIZE:



TYPICAL DETAILS

CROSS SECTION
 SCALE: 0.5260" = 1'-0"

HAMMOND LUMBER COMPANY HAS SUPPLIED THIS DRAWING FOR ILLUSTRATIVE AND INFORMATIONAL PURPOSES ONLY. THE HOMEOWNER/CONTRACTOR IS RESPONSIBLE FOR ENSURING THAT THE MATERIALS CHOSEN WILL COMPLY WITH LOCAL BUILDING CODES AND/OR STANDARD BUILDING PRACTICES. HAMMOND LUMBER COMPANY SUGGESTS THAT ISN'T CUSTOMERS SEEK THE ASSISTANCE OF A REGISTERED ENGINEER OR ARCHITECT IF FURTHER INFORMATION IS NEEDED. THIS DRAWING IS NOT INTENDED TO BE USED AS A BASIS FOR CONSTRUCTION AND HAMMOND LUMBER COMPANY DISCLAIMS ANY RESPONSIBILITY IF THEY ARE SO USED.

DRAWINGS ARE PROVIDED BY HAMMOND LUMBER COMPANY AS A SERVICE TO OUR CUSTOMERS. THE INFORMATION PRESENTED IN THESE DRAWINGS IS NOT PREPARED BY A REGISTERED ENGINEER OR ARCHITECT. HAMMOND LUMBER COMPANY SUGGESTS THAT ITS CUSTOMERS SEEK THE SERVICES OF A REGISTERED ARCHITECT TO OBTAIN TECHNICAL ADVICE. DRAWINGS ARE NOT TO BE USED AS A BASIS FOR CONSTRUCTION AND HAMMOND LUMBER COMPANY DISCLAIMS ANY RESPONSIBILITY IF THEY ARE SO USED.

ABB	Thursday, July 6, 2011	4/20/2011	
RAB	SCALE: AS NOTED	7/6/2011	
FOR	2	2	

DRAWING: AD110496

ABDULLAHI AHMED
 19X16 ADDITION
 FORTLAND
 OWN

