



ABDULLAH AHMED

PORTLAND

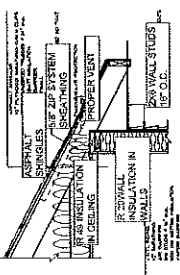
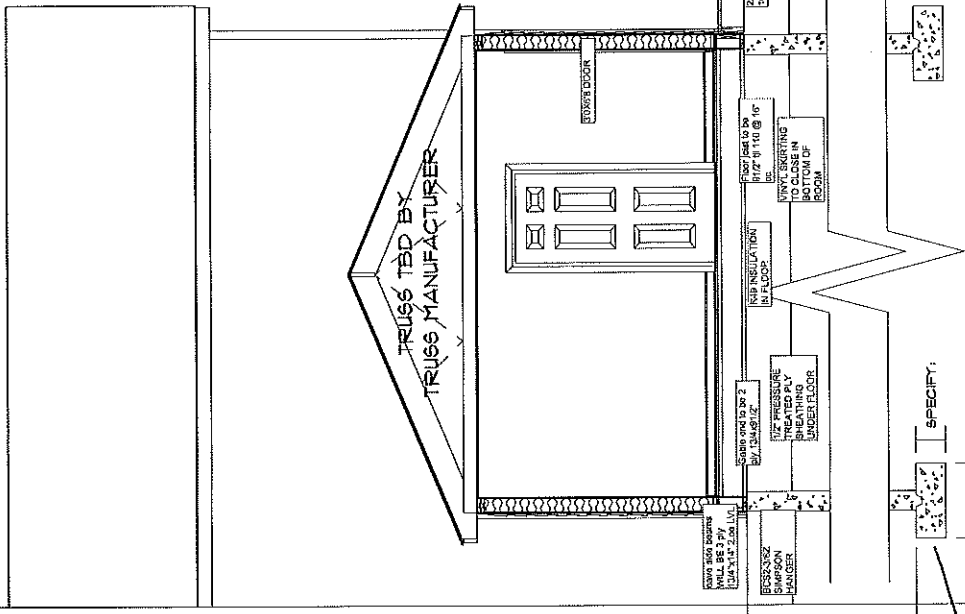
18X6 ADDITION

01N

ADT0496

DATE	Monday, July 23, 2018
RAB	SCALE: AS NOTED
FOR	2
NO	2
1	1
1	1

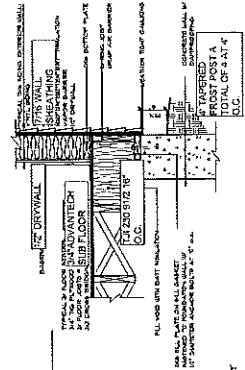
Hammond Lumber Company  
 18000 SW 10th Street  
 Portland, OR 97205  
 Phone: 503-288-1111  
 Fax: 503-288-1112  
 Website: www.hammond.com



STAIRS WITH  
 1/2" PLYWOOD  
 ALL WINDOWS  
 AND DOOR  
 REASERS

SPECIFY RAIL IF  
 REQUIRED:

NUMBER OF TREADS,  
 TREAD SIZE,  
 NUMBER OF RISERS,  
 RISER SIZE.



TYPICAL DETAILS

TYPICAL - NOT TO SCALE

HAMMOND LUMBER COMPANY HAS SUPPLIED THIS DRAWING FOR ILLUSTRATIVE AND INFORMATIONAL PURPOSES ONLY. THE HOMEOWNER/CONTRACTOR IS RESPONSIBLE FOR ENSURING THAT THE MATERIALS CHOSEN WILL COMPLY WITH LOCAL BUILDING CODES AND/OR STANDARD BUILDING PRACTICES. HAMMOND LUMBER COMPANY SUGGESTS THAT ISIT CUSTOMERS SEEK THE ASSISTANCE OF A REGISTERED PROFESSIONAL ENGINEER FOR FURTHER INFORMATION AND THAT ALL MATERIALS BE USED AS A BASIS FOR CONSTRUCTION AND HAMMOND LUMBER COMPANY DISCLAIMS ANY RESPONSIBILITY IF THEY ARE SO USED.

CROSS SECTION  
 SCALE 3/8" = 1'-0"

4 feet in the ground  
 8" wall (thickness)  
 12" inch thick  
 24" wide