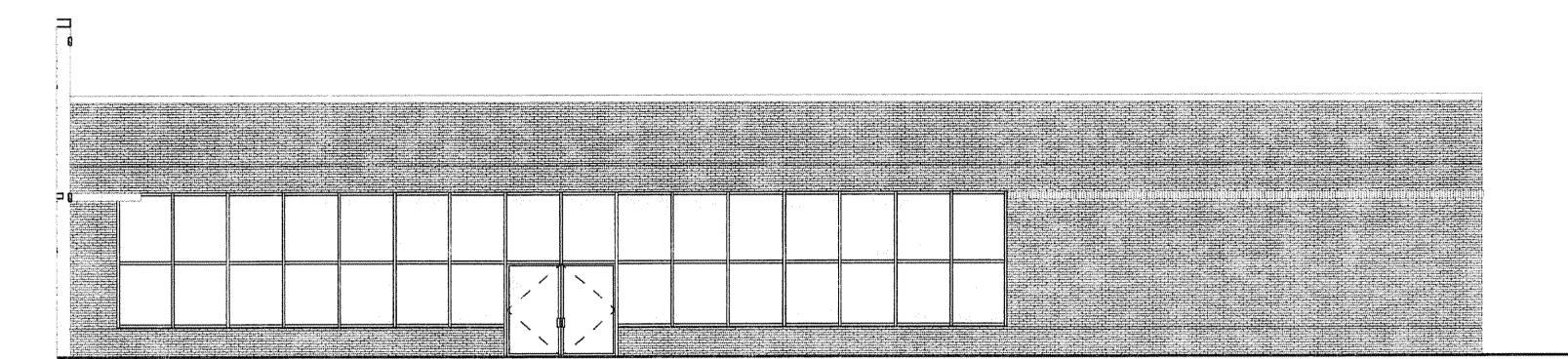
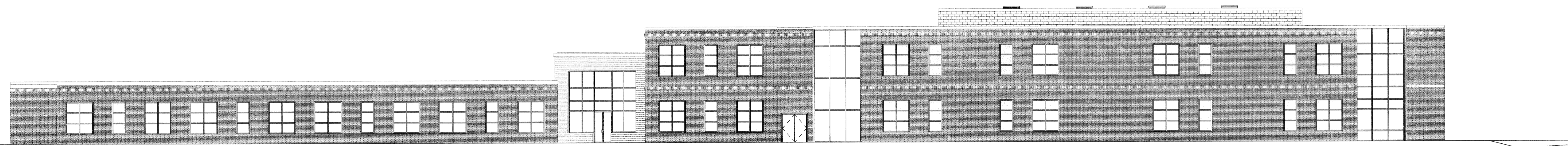


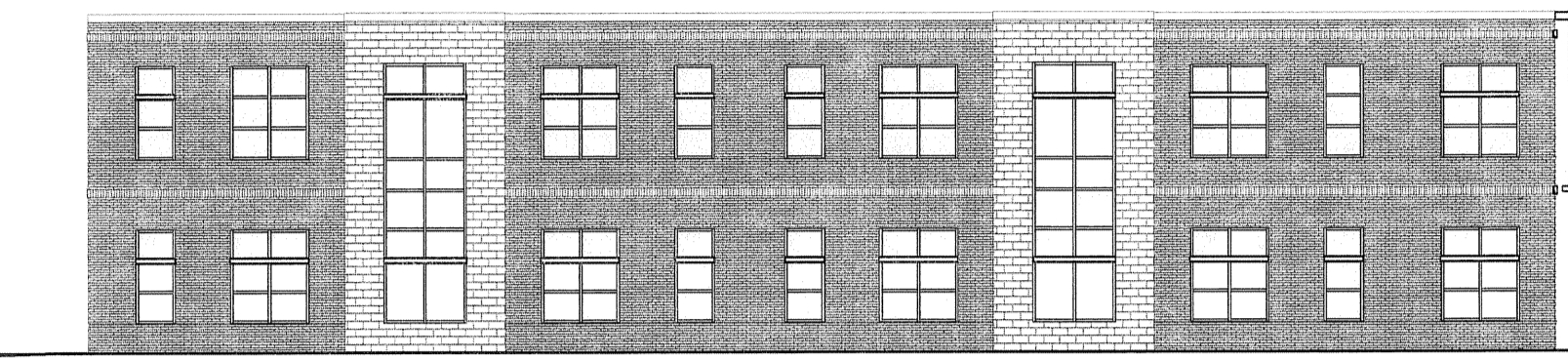
1 WEST ELEVATION  
AE201 SCALE: 1/16" = 1'-0"



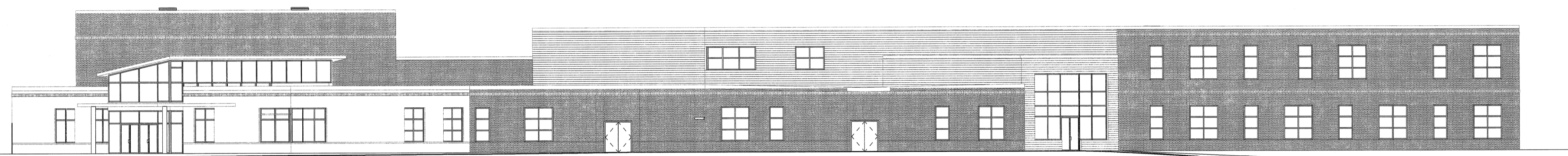
5 CAFETERIA PART ELEVATION  
AE201 SCALE: 1/16" = 1'-0"



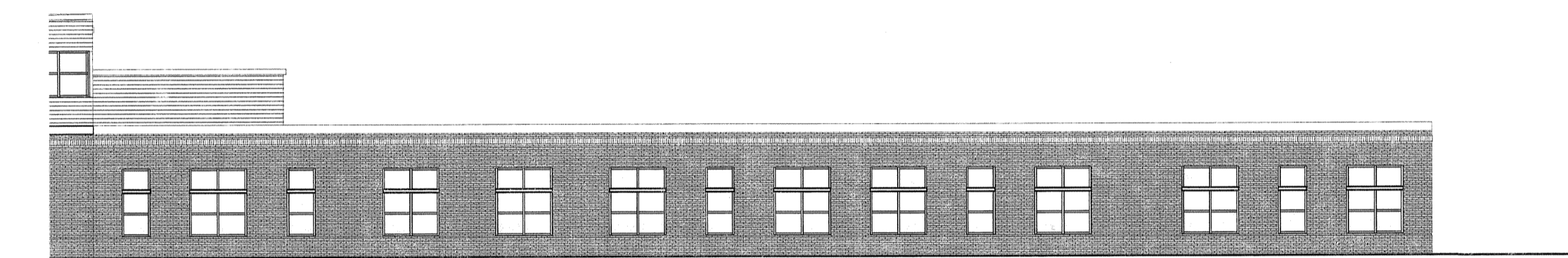
2 NORTH ELEVATION  
AE201 SCALE: 1/16" = 1'-0"



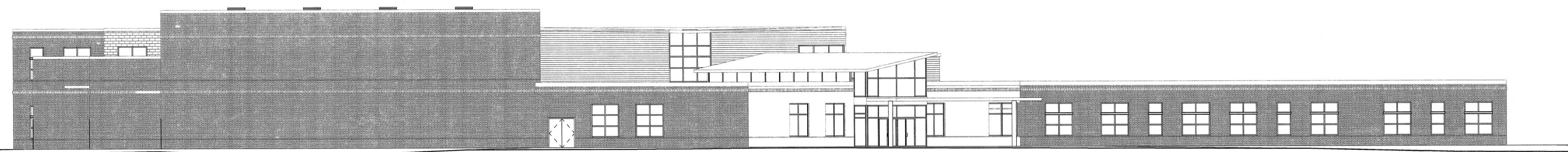
6 1ST/2ND CLASSROOM PART ELEVATION  
AE201 SCALE: 1/16" = 1'-0"



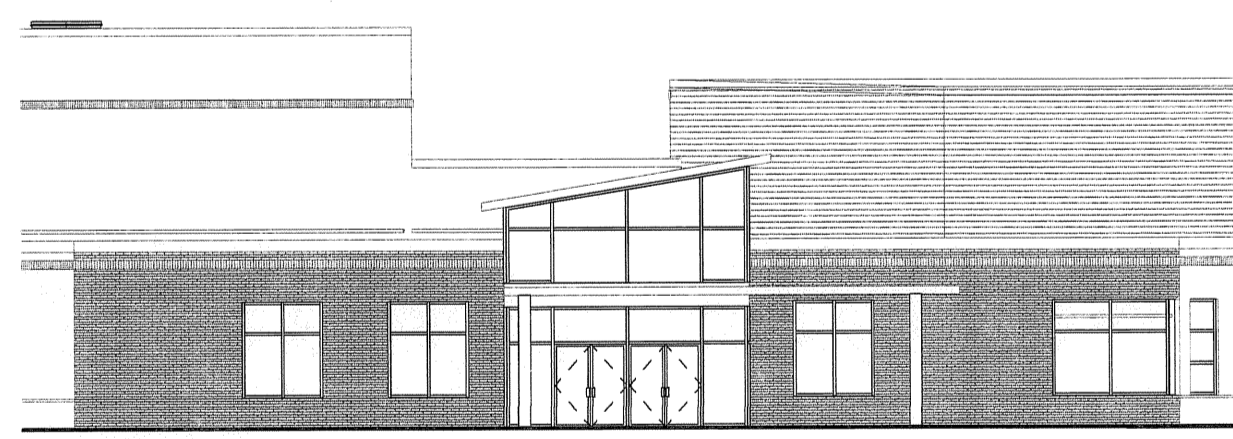
3 EAST ELEVATION  
AE201 SCALE: 1/16" = 1'-0"



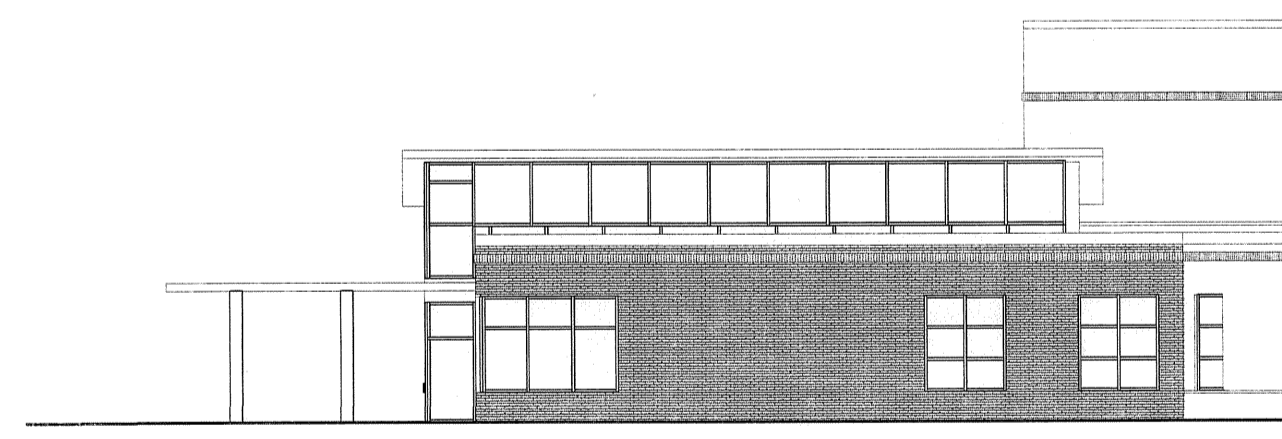
7 KINDERGARTEN CLASSROOM PART ELEVATION  
AE201 SCALE: 1/16" = 1'-0"



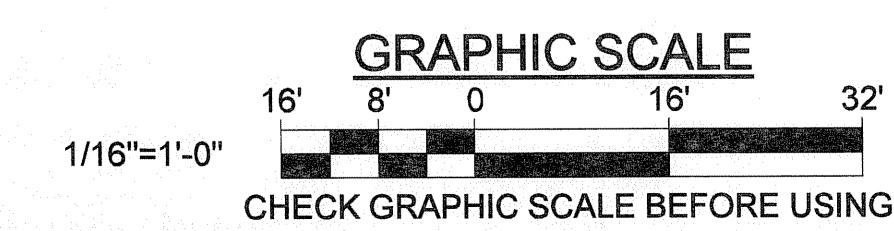
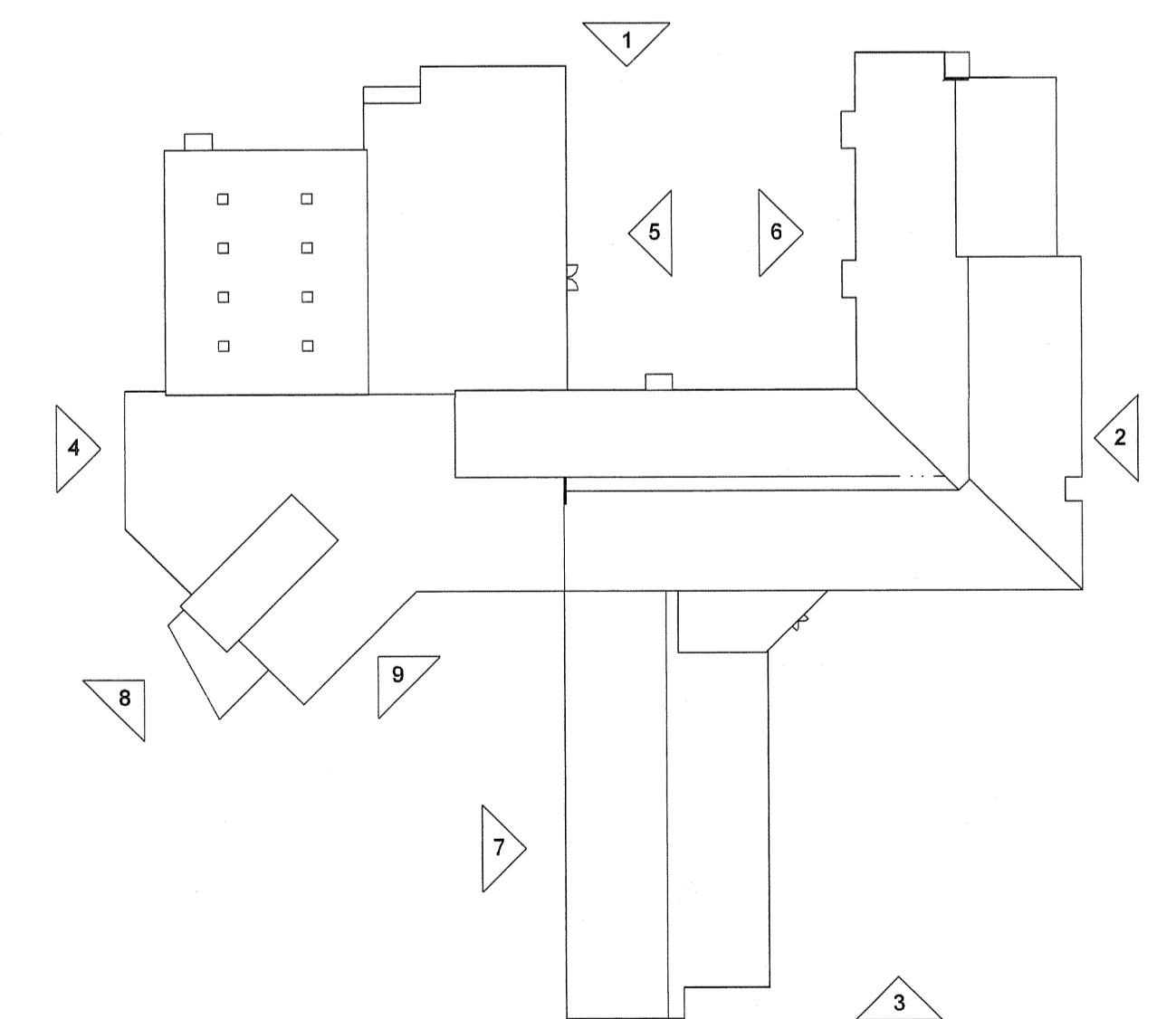
4 SOUTH ELEVATION  
AE201 SCALE: 1/16" = 1'-0"



8 MAIN ENTRANCE PART ELEVATION  
AE201 SCALE: 1/16" = 1'-0"



9 MAIN OFFICE PART ELEVATION  
AE201 SCALE: 1/16" = 1'-0"



FOR PERMITTING PURPOSES ONLY, NOT FOR CONSTRUCTION			
		<b>STATE OF MAINE</b> <b>PUBLIC SCHOOL PROJECT</b>	
		TITLE: PORTLAND PUBLIC SCHOOLS NEW FRED P. HALL ELEMENTARY SCHOOL	
		LOCATION: 23 ORONO ROAD, PORTLAND, ME (PART 275 BLOCK 0048, LOT 001)	
		TITLE THIS DRAW: <b>BUILDING ELEVATIONS</b>	
		DRAWN BY: Author CHECK BY: Designer	OAK POINT ASSOCIATES <b>AE201</b>
NO.	DATE	DESCRIPTION	BY
		REVISIONS	
		DATE: 08/29/16	SHEET NO. 15 OF 15 <small>221 Main Street, Scarborough, Maine 04105 207.283.0193</small>