

KEYNOTES: (THIS SHEET ONLY.)

ELECTRIC/COMMUNICATIONS

UTILITY POLE (BY CMP). COORDINATE INSTALLATION WITH CMP, FAIRPOINT COMMUNICATIONS AND TIME WARNER CABLE.

OVERHEAD ELECTRIC AND COMMUNICATIONS SERVICE. COORDINATE WITH CMP, FAIRPOINT COMMUNICATIONS AND TIME WARNER CABLE. PROVIDE TEMPORARY POWER AND COMMUNICATIONS SERVICE TO RESIDENCE AND MINIMIZE OUTAGES. NOTIFY PROPERTY OWNERS AT LEAST 10 BUSINESS DAYS PRIOR TO ANY UTILITY DISRUPTION.

NOT USED.

WATER

WATER LINE IN PIPE TRENCH.

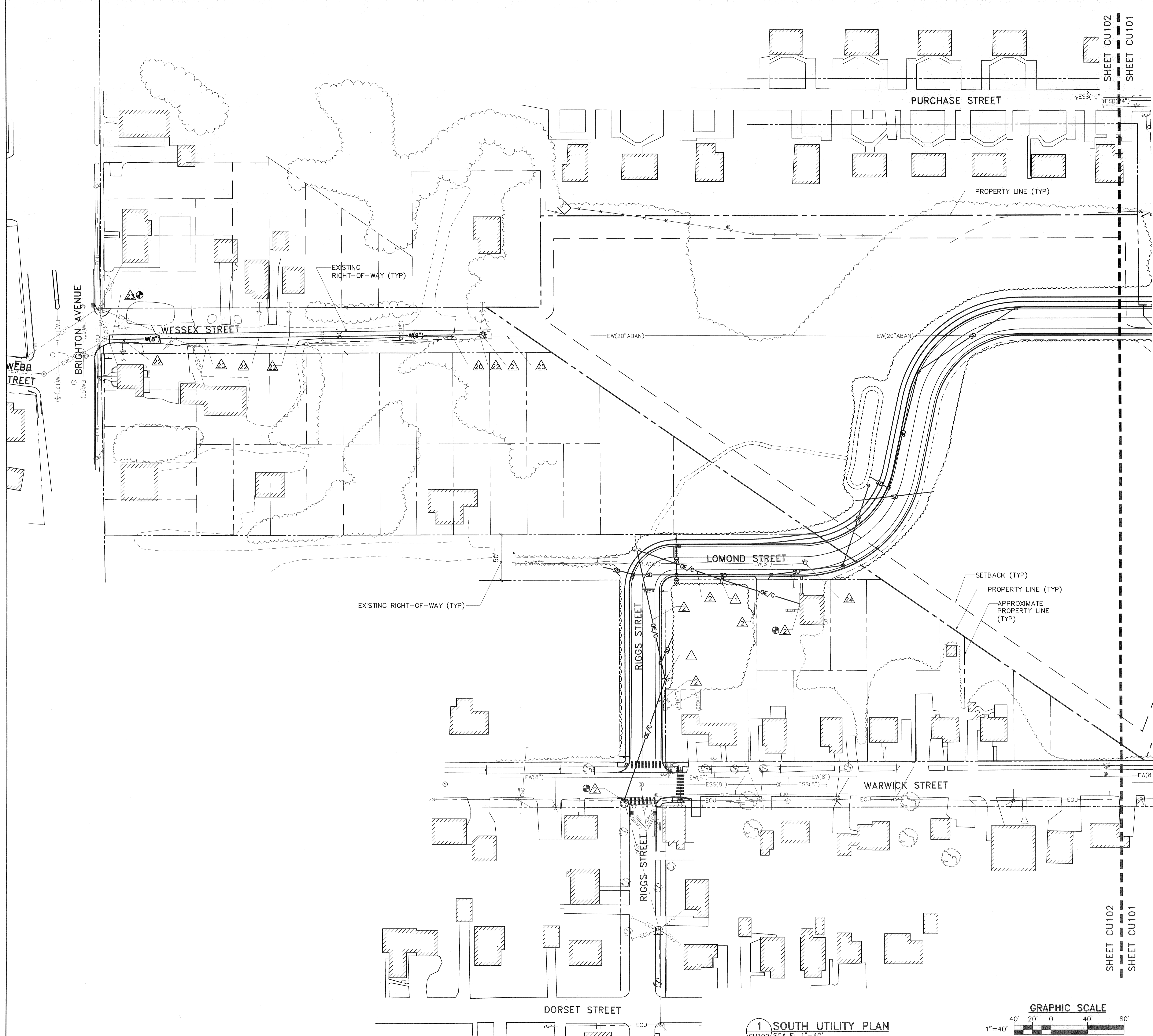
BLOW-OFF VALVE.

EXTEND EXISTING RESIDENTIAL SERVICE AND CONNECT TO NEW WATER LINE. PROVIDE AT LEAST 48 HOURS NOTICE TO PROPERTY OWNER AND ARCHITECT PRIOR TO ANY WATER SERVICE OUTAGE. PROVIDE TEMPORARY WATER SERVICE TO HOMES FOR ANY OUTAGES EXCEEDING 4 HOURS IN ACCORDANCE WITH PORTLAND WATER DISTRICT'S WRITTEN REQUIREMENTS.

20"x8" DECREASER. CONNECT TO EXISTING 20" WATER MAIN AFTER WATER VALVE PIT.

ADJUST VALVE BOX TO MEET FINISH GRADES INDICATED ON CG102.

CAP AND ABANDON EXISTING WATERLINE.



NOTE:
SEE SHEET CD103 FOR ADDITIONAL TREE REMOVALS

FOR PERMITTING PURPOSES ONLY, NOT FOR CONSTRUCTION			
STATE OF MAINE PUBLIC SCHOOL PROJECT			
TITLE: PORTLAND PUBLIC SCHOOLS NEW FRED P. HALL ELEMENTARY SCHOOL LOCATION: 23 ORONO ROAD, PORTLAND, ME (CHART 275, BLOCK C048, LOT 001)			
TITLE THIS DATE: SOUTH UTILITY PLAN			
NO.	DATE	DESCRIPTION	BY
REVISIONS			DATE: 08/29/16
DRAWN BY: MMV		DRAWING NO.	
CHECKED BY: JSD		NO.	
		SHEET NO.	
		10 of 15	
OAK POINT ASSOCIATES 231 Main Street, Biddeford, Maine 04005 207.283.0193			

1 SOUTH UTILITY PLAN
CU102 SCALE: 1"=40'

