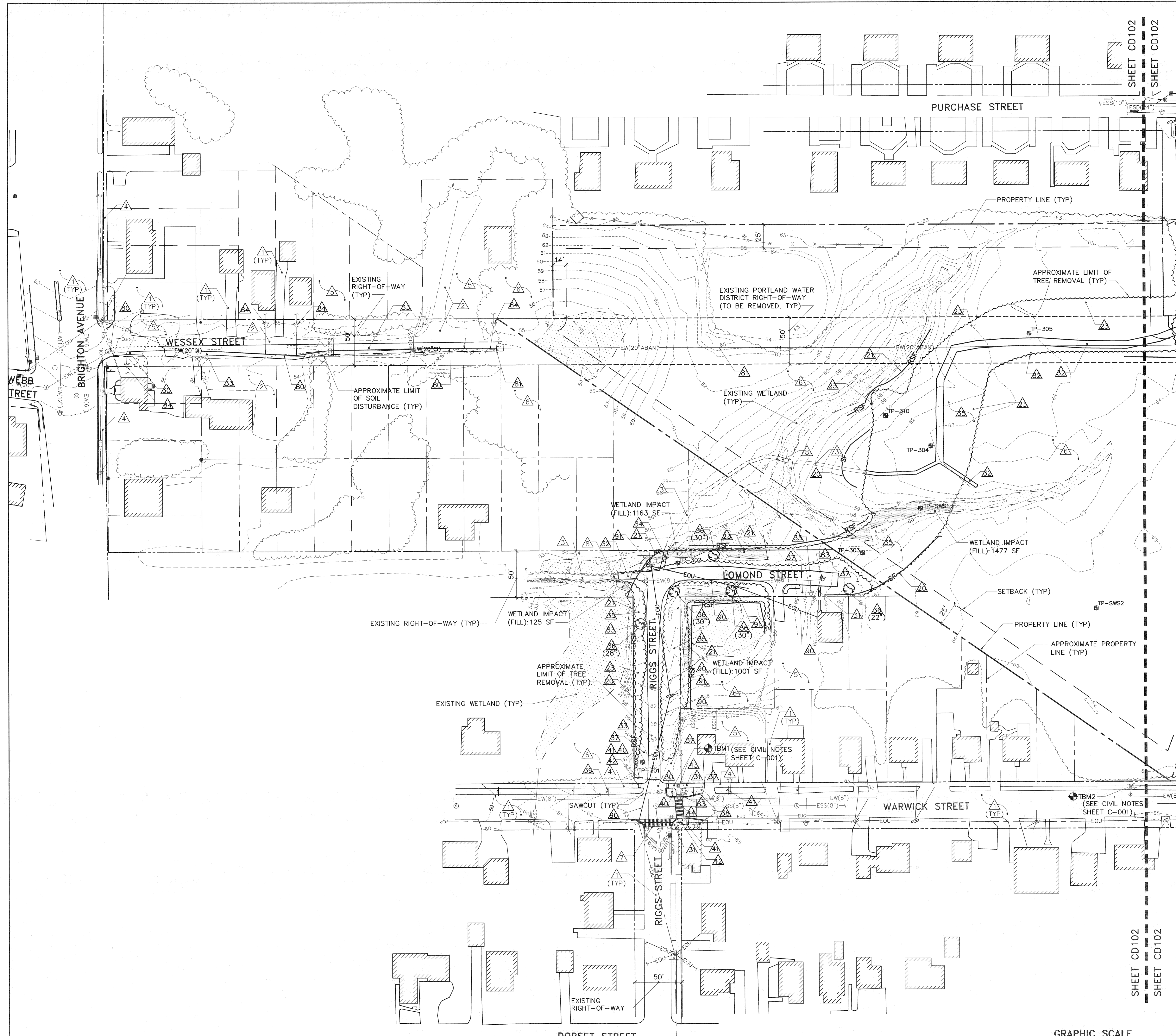


KEYNOTES: (THIS SHEET ONLY.)

- ▲ EXISTING ASPHALT CONCRETE PAVEMENT.
- ▲ EXISTING GRAVEL ROAD/DRIVEWAY.
- ▲ EXISTING WALKING TRAIL.
- ▲ EXISTING ASPHALT CONCRETE SIDEWALK.
- ▲ EXISTING TURF GRASS/MEADOW.
- ▲ EXISTING WOODED AREA.
- ▲ EXISTING CROSSWALK.
- ▲ EXISTING WOODEN FOOTBRIDGE.
- ▲ NOT USED.
- ▲ SILT FENCE.
- ▲ REINFORCED SILT FENCE.
- ▲ SEDIMENT CONTROL WATTLE.
- ▲ EROSION CONTROL BLANKET.
- ▲ NOT USED.
- ▲ SAWCUT AND REMOVE EXISTING ASPHALT CONCRETE PAVEMENT, ±4" THICK.
- ▲ SAWCUT AND REMOVE EXISTING ASPHALT CONCRETE SIDEWALK, ±2" THICK.
- ▲ REMOVE EXISTING GRAVEL WALKING TRAIL, ±4" THICK.
- ▲ STRIP EXISTING STONE GRAVEL DRIVE, ±6" THICK.
- ▲ REMOVE EXISTING WOODEN FOOTBRIDGE.
- ▲ CLEAR EXISTING WOODED AREA AND GRUB OUT STUMPS.
- ▲ REMOVE EXISTING TREE (APPROXIMATE DIAMETER AS INDICATED).
- ▲ STRIP AND STOCKPILE EXISTING TOPSOIL, ±4" THICK.
- ▲ REMOVE EXISTING GRANITE CURB.
- ▲ REMOVE EXISTING WEEDS/BRUSH FROM VICINITY OF EXISTING SIGN AND STREET TREE.
- ▲ REMOVE EXISTING SIGN AND METAL POST.
- ▲ REMOVE EXISTING STREET SIGN FROM TOP OF METAL SIGNPOST AND STORE FOR REINSTALLATION.
- ▲ REMOVE EXISTING TACTILE WARNING PANEL SET IN CONCRETE (±4" THICK).
- ▲ REMOVE AND SALVAGE EXISTING SURVEY MARKER CONSISTING OF A BRASS PLUG SET IN CONCRETE INSIDE OF A CAST IRON ENCLOSURE WITH A CAST IRON COVER.
- ▲ REMOVE EXISTING CROSSWALK MARKINGS USING HIGH PRESSURE WATER, SAND BLASTING, SOLVENT OR OTHER METHOD APPROVED BY THE MAINE DEPARTMENT OF TRANSPORTATION. DO NOT ALLOW MATERIAL REMOVED OR MATERIALS USED DURING THE REMOVAL PROCESS TO BE RELEASED INTO THE ENVIRONMENT.
- ▲ NOT USED.
- ▲ CUT AND REMOVE EXISTING WATER LINE. COORDINATE SHUT OFF AND DISCONNECTION OF WATER LINE WITH PORTLAND WATER DISTRICT.
- ▲ CAP EXISTING WATER LINE AND ABANDON IN PLACE.
- ▲ REMOVE EXISTING WATER LINE MARKER POST.
- ▲ ADJUST VALVE BOX TO MEET FINISH GRADES INDICATED ON CG102
- ▲ PROVIDE TEMPORARY WATER SERVICE AFTER WATER LINE IS DISCONNECTED. TEMPORARY SERVICE SHALL BE IN ACCORDANCE WITH PORTLAND WATER DISTRICT'S WRITTEN REQUIREMENTS. PROVIDE 10 BUSINESS DAYS NOTICE TO OWNER, ARCHITECT, PROPERTY OWNER AND PORTLAND WATER DISTRICT PRIOR TO INTERRUPTING SERVICE.
- ▲ NOT USED.
- ▲ DISCONNECT AND REMOVE EXISTING OVERHEAD ELECTRIC AND COMMUNICATION LINES. COORDINATE DISCONNECTION WITH OWNER, CMP, TIME WARNER CABLE AND FAIRPOINT COMMUNICATIONS. PROVIDE TEMPORARY POWER AND COMMUNICATIONS SERVICE TO RESIDENCE AND MINIMIZE OUTAGES. NOTIFY PROPERTY OWNERS AT LEAST 10 BUSINESS DAYS PRIOR TO ANY UTILITY DISRUPTION.
- ▲ REMOVE EXISTING UTILITY POLE. COORDINATE POLE REMOVAL WITH CMP.

NOTE:
SEE SHEET CD103 FOR ADDITIONAL TREE REMOVALS

FOR PERMITTING PURPOSES ONLY, NOT FOR CONSTRUCTION			
STATE OF MAINE PUBLIC SCHOOL PROJECT			
TITLE: PORTLAND PUBLIC SCHOOLS NEW FRED P. HALL ELEMENTARY SCHOOL LOCATION: 23 ORONO ROAD, PORTLAND, ME (CHART 275, BLOCK C248, LOT 001)			
TITLE THIS DATE: SOUTH REMOVALS SITE PLAN			
DRAWN BY: JSD		CHECKED BY: MMV	
NO.	DATE	DESCRIPTION	BY
		REVISIONS	DATE: 08/29/16
OAK POINT ASSOCIATES			DRAWING NO. CD102
231 Main Street, Biddeford, Maine 04005			SHEET NO. 4 OF 15



1 SOUTH REMOVALS SITE PLAN
CD102 SCALE: 1"=40'

