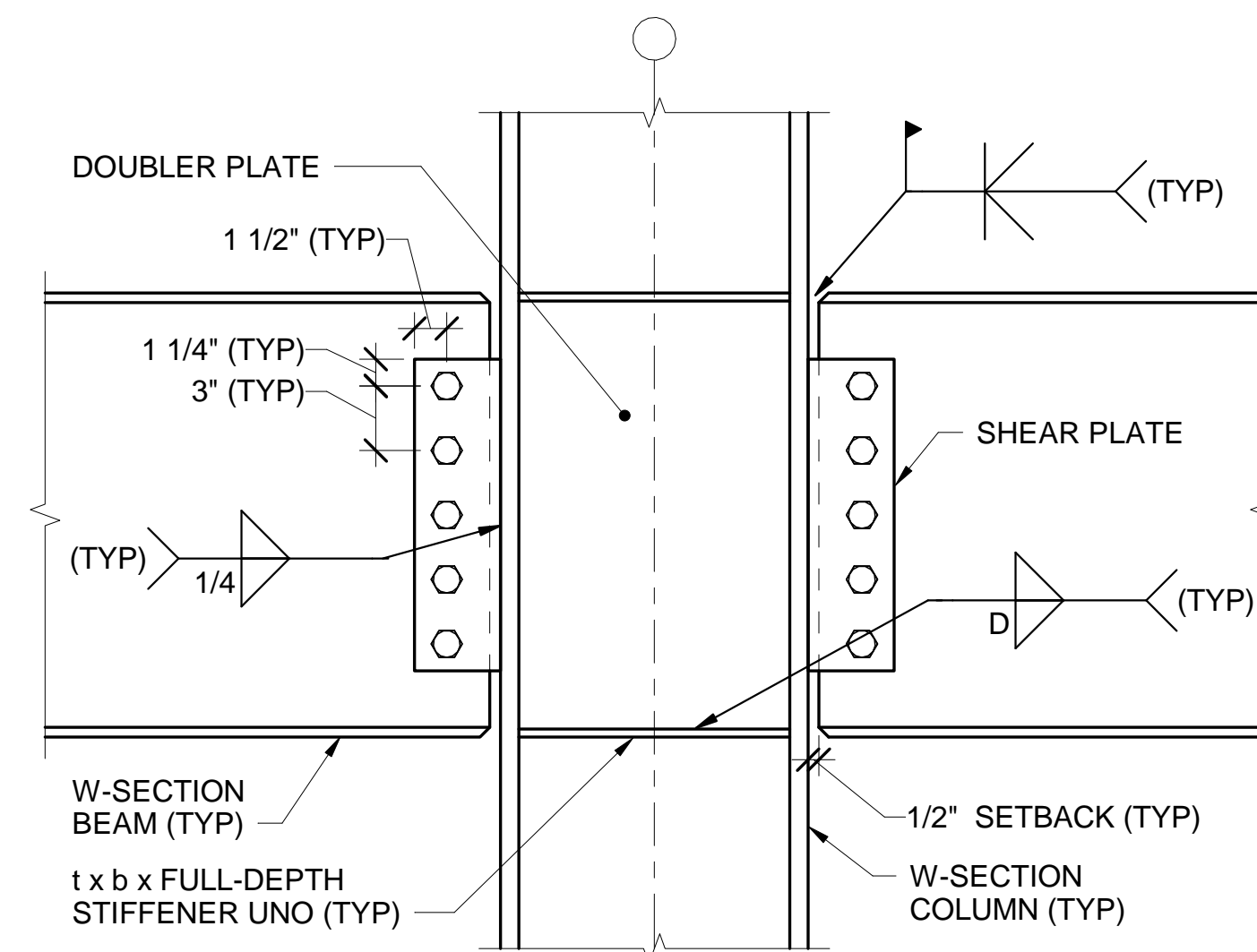


## DIRECT WELDED MOMENT CONNECTION SCHEDULE

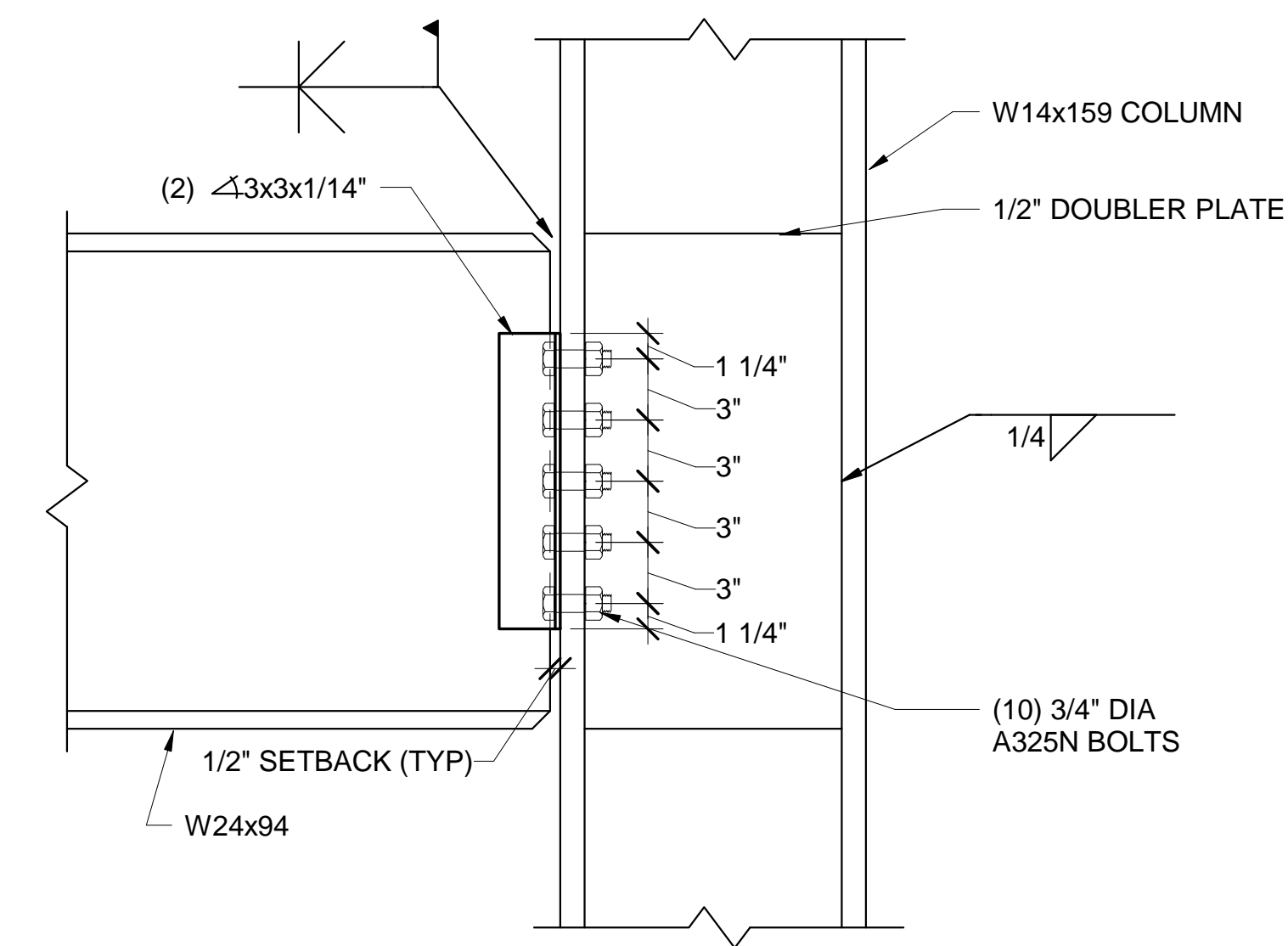
CONN NO	SHEAR PLATE	NUMBER/SIZE OF BOLTS	STIFFENER SIZE	WELD SIZE	DOUBLER PLATE	WELD SIZE
M1	3/8"x4"x1'-2 1/2"	(5) 3/4" DIA A325N	NR	NR	NR	NR
M2	3/8"x4"x1'-2 1/2"	(5) 3/4" DIA A325N	3/8"x5"xHALF-DEPTH (TOP)	1/4"	NR	NR
M3	3/8"x4"x1'-2 1/2"	(5) 3/4" DIA A325N	NR	NR	1/2"	1/4"
M4	SEE DETAIL 2/SF606	-	NR	NR	1/2"	1/4"
M5	3/8"x4"x1'-2 1/2"	(5) 3/4" DIA A325N	1/2"x5"xFULL-DEPTH	1/4"	1/2"	1/4"
M6	3/8"x4"x1'-2 1/2"	(5) 3/4" DIA A325N	NA	NA	NA	NA
M7	3/8"x4"x1'-1/2"	(4) 3/4" DIA A325N	NA	NA	NA	NA

- NOTES:**
- SEE DETAIL 1/SF606 FOR TYPICAL MOMENT CONNECTION AT WIDE FLANGE COLUMN AND DETAIL 3/SF606 AT HSS COLUMN.
  - BACKER BARS DO NOT NEED TO BE REMOVED.
  - STIFFENERS TO BE PROVIDED ON EACH SIDE OF WEB.
  - COORDINATE WITH JOIST CONNECTION DETAILS AND COLUMN CAP PLATES.
  - PROVIDE 1/2" x 2" WIDE DECK SUPPORT PLATES AT COLUMN FLANGES. SEE DETAIL \_\_\_/SF606 FOR WELDS.

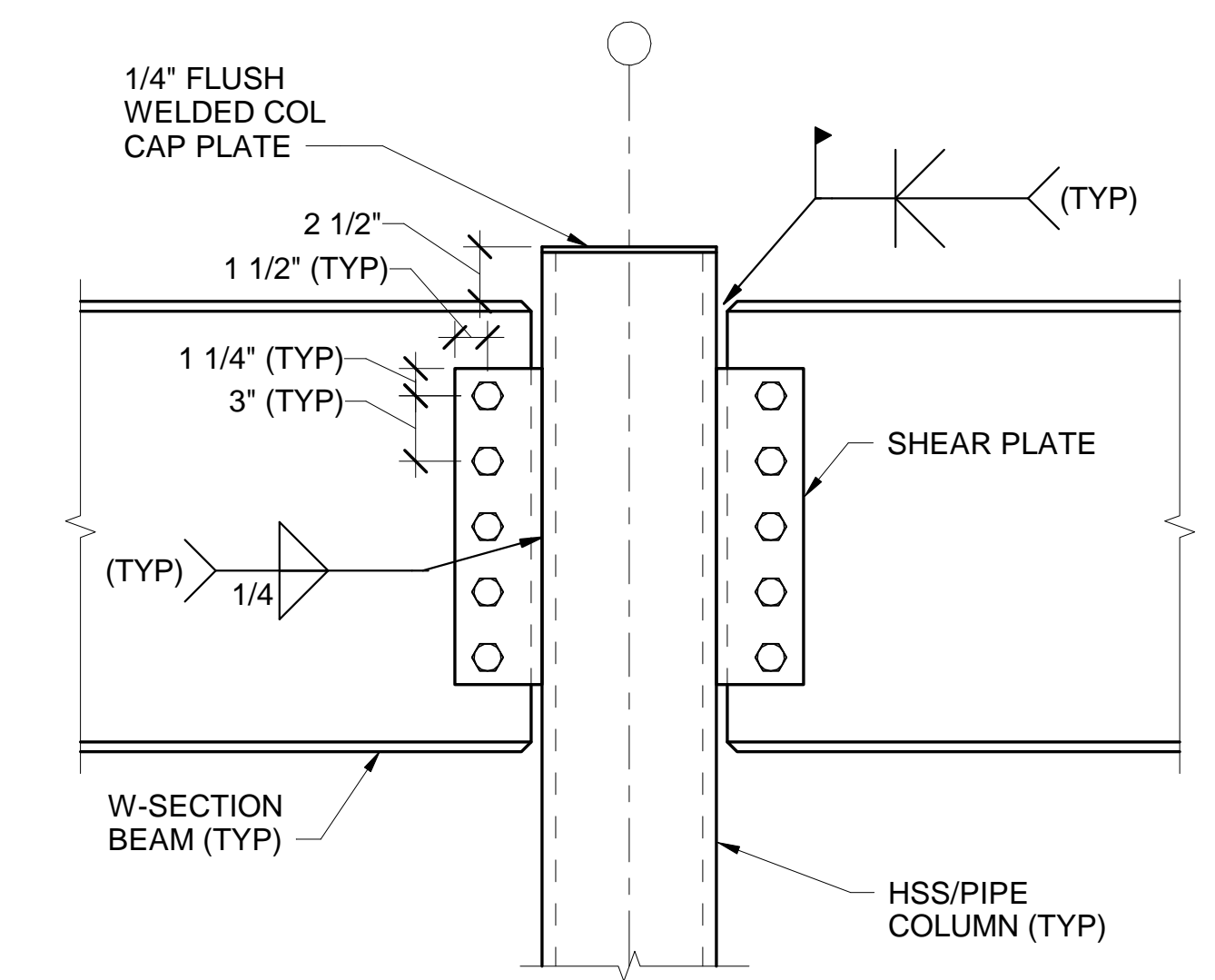


- NOTES:**
- USE SIMILAR DETAIL AT ROOF LEVEL CONNECTION.
  - PERPENDICULAR BEAM TO WEB CONNECTION NOT SHOWN.
  - ALIGN STIFFENER WITH FLANGES.
  - DOUBLER PLATE TO BE FITTED BETWEEN FULL DEPTH STIFFENERS OR SHALL BE ALIGNED WITH FLANGES OF GIRDERS. DOUBLER PLATES SHALL BE FITTED BETWEEN COLUMN FLANGES.
  - SETBACK DISTANCE MAY BE INCREASED TO 3/4\".

**1 TYP DIRECT WELDED MOMENT CONN DETAIL AT WIDE FLANGE COLUMN**  
SF606 / SCALE: 1 1/2" = 1'-0"

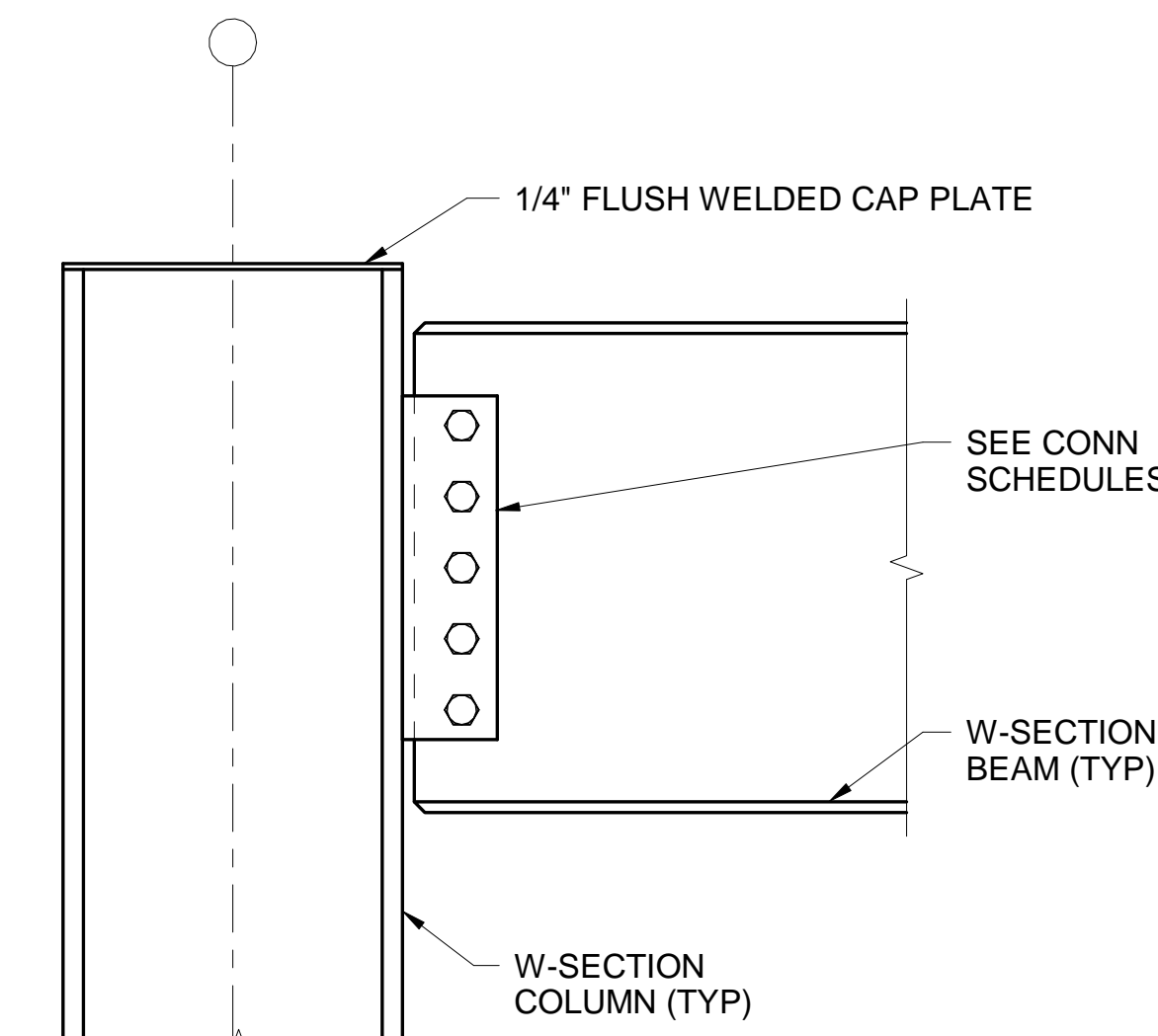


**2 MOMENT CONNECTION M4 DETAIL**  
SF606 / SCALE: 1 1/2" = 1'-0"



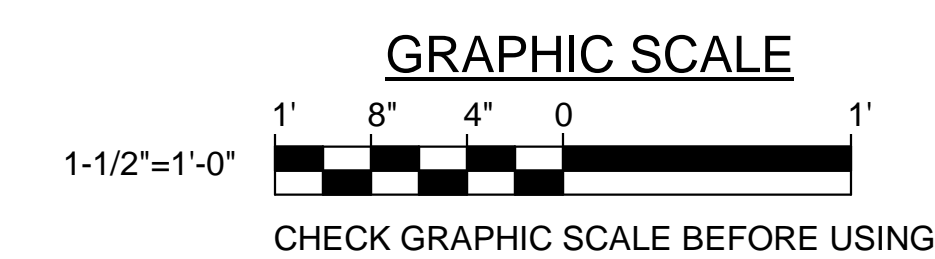
- NOTES:**
- PERPENDICULAR BEAM TO WEB CONNECTION NOT SHOWN.
  - SETBACK DISTANCE MAY BE INCREASED TO 3/4\".

**3 TYP DIRECT WELDED MOMENT CONN DETAIL AT HSS/PIPE COLUMN**  
SF606 / SCALE: 1 1/2" = 1'-0"



- NOTE:**
- DECK NOT SHOWN FOR CLARITY.

**4 TYP W-SECTION COL CAP PLATE**  
SF606 / SCALE: 1 1/2" = 1'-0"



CHECK GRAPHIC SCALE BEFORE USING

		<b>STATE OF MAINE</b> <b>PUBLIC SCHOOL PROJECT</b>	
		TITLE: PORTLAND PUBLIC SCHOOLS NEW FRED P. HALL ELEMENTARY SCHOOL LOCATION: 23 ORONO ROAD, PORTLAND, ME	
DRAWN BY: MJC CHECK BY: DNM		<b>OAK POINT ASSOCIATES</b> <b>SF606</b>	
NO. DATE	DESCRIPTION	BY	NO.
	REVISIONS		DATE 03/17/17