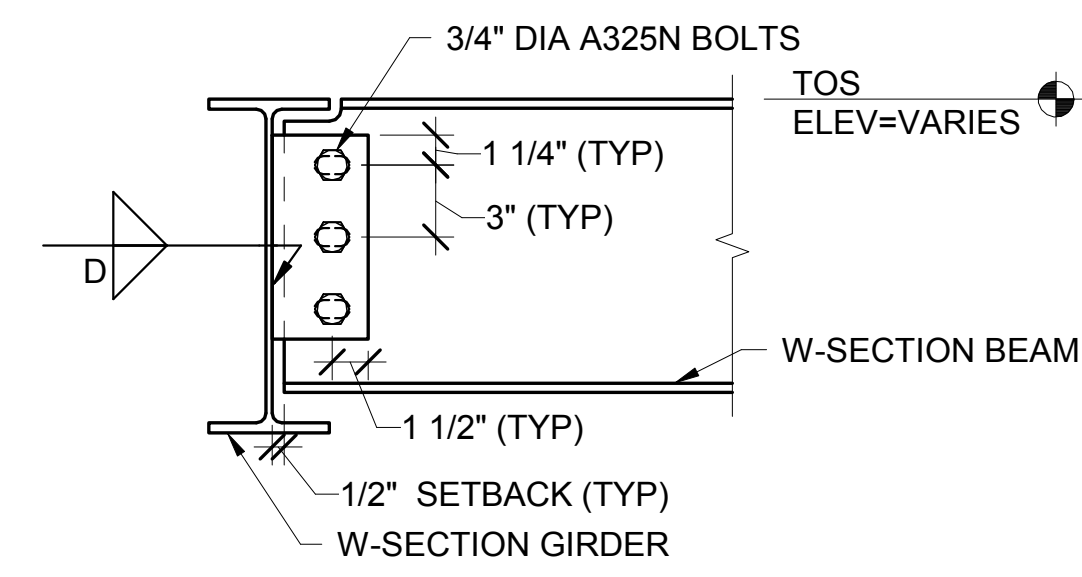


SHEAR PLATE AT WIDE FLANGE BEAM/COLUMN CONNECTION SCHEDULE

FACTORED REACTION Ru (KIPS)	SHEAR PLATE SIZE	NUMBER/SIZE OF BOLTS	WELD SIZE (D)
10 TO 31	3/8"x4"x5-1/2"	(2) 3/4" DIA A325N	1/4"
32 TO 43	3/8"x4"x8-1/2"	(3) 3/4" DIA A325N	1/4"
44 TO 62	3/8"x4"x11-1/2"	(4) 3/4" DIA A325N	1/4"
63 TO 81	3/8"x4"x1-2 1/2"	(5) 3/4" DIA A325N	1/4"
82 TO 100	3/8"x4"x1-5 1/2"	(6) 3/4" DIA A325N	1/4"

NOTES:

- COPE W-SECTION BEAMS AS REQUIRED/INDICATED.
- BEAMS HAVE BEEN CHECKED FOR FLEXURAL YIELDING AND LOCAL WEB BUCKLING.
- PLATES SHALL HAVE HORIZONTAL SHORT SLOTTED HOLES UNLESS NOTED OTHERWISE.



- NOTES:**
- FLOOR SLAB/ROOF DECK NOT SHOWN FOR CLARITY.
 - SETBACK MAY BE INCREASED UP TO 1" IF WIDTH OF PLATE IS INCREASED TO 4-1/2".

BEAM BEARING PLATE SCHEDULE

MARK	BEARING PLATE SIZE	WELD SIZE	WELD LENGTH	HEADED STUD SIZE	HEADED STUD GAGE
BBP1	1/2"x4"x6"	1/8"	1-1/2"	3/4"x4"	4"
BBP2	1/2"x6"x6"	1/8"	1-1/2"	3/4"x4"	4"
BBP3	5/8"x6"x9"	1/8"	1-1/2"	3/4"x4"	4"

NOTE:
GROUT BEARING PLATE POCKETS SOLID AFTER BEAM INSTALLATION.

BRICK/BLOCK VENEER LINTEL SCHEDULE

LENGTH	LINTEL SIZE	END BEARING
≤ 4'-0"	∠ 3-1/2x3-1/2x1/4	8"
> 4'-0" TO 6'-8"	∠ 5x3-1/2x1/4 (LLV)	8"
> 6'-8" TO 11'-0"	∠ 6x4x5/16 (LLV)	8"
> 11'-0" TO 16'-0"	∠ 8x4x5/8 (LLV)	8"

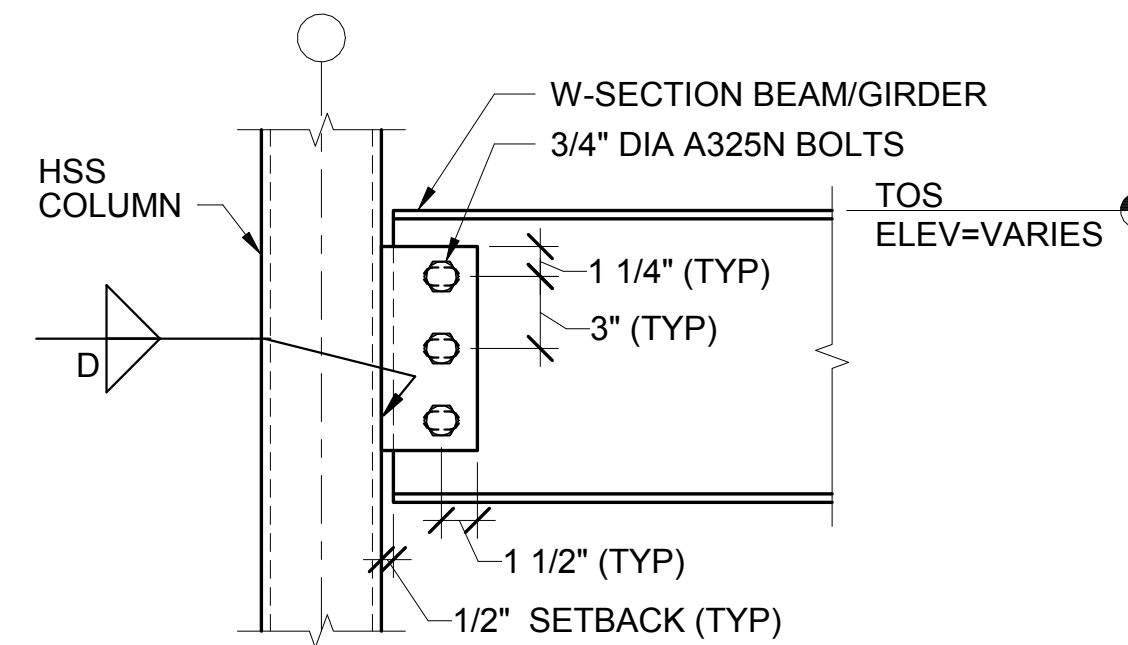
NOTE:
GALVANIZE LINTELS.

SHEAR PLATE AT HSS COLUMNS CONNECTION SCHEDULE

FACTORED REACTION Ru (KIPS)	SHEAR PLATE SIZE	NUMBER/SIZE OF BOLTS	WELD SIZE (D)
10 TO 31	3/8"x4"x5-1/2"	(2) 3/4" DIA A325N	1/4"
32 TO 43	3/8"x4"x8-1/2"	(3) 3/4" DIA A325N	1/4"
44 TO 62	3/8"x4"x11-1/2"	(4) 3/4" DIA A325N	1/4"
63 TO 81	3/8"x4"x1-2 1/2"	(5) 3/4" DIA A325N	1/4"
82 TO 100	3/8"x4"x1-5 1/2"	(6) 3/4" DIA A325N	1/4"
101 TO 118	3/8"x4"x1-8 1/2"	(7) 3/4" DIA A325N	1/4"

NOTES:

- INCREASE NUMBER OF BOLTS AND LENGTH OF SHEAR PLATES SO THAT THE SHEAR PLATE LENGTH IS EQUAL TO OR GREATER THAN T/2 DISTANCE FOR THE SUPPORTED BEAM, UNLESS NOTED OTHERWISE.
- ABOVE SCHEDULES APPLY TO FLOOR AND ROOF BEAMS/GIRDERS.
- PLATES SHALL HAVE HORIZONTAL SHORT SLOTTED HOLES UNLESS NOTED OTHERWISE.



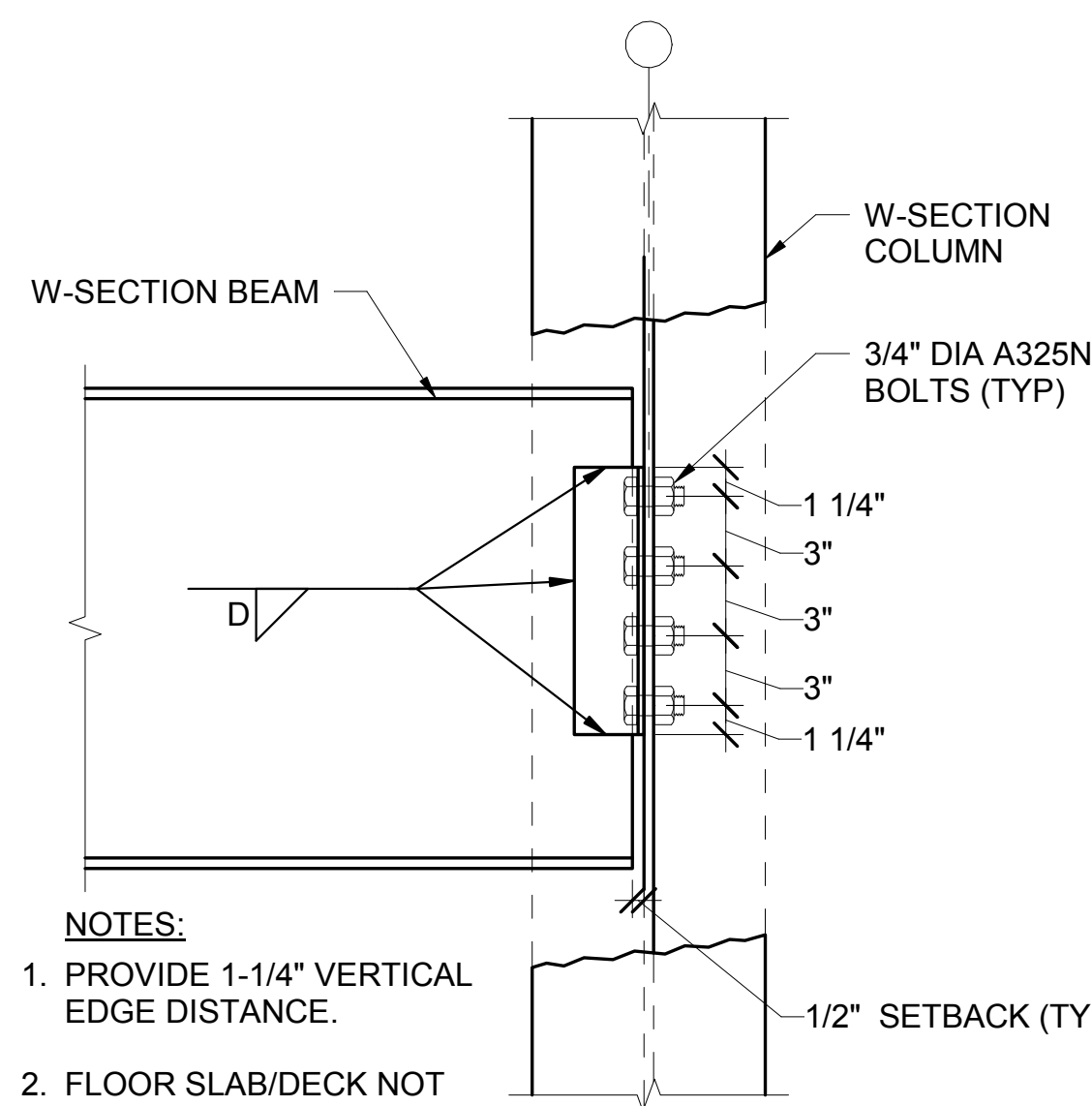
- NOTES:**
- FLOOR SLAB/ROOF DECK NOT SHOWN FOR CLARITY.
 - SETBACK MAY BE INCREASED UP TO 1" IF WIDTH OF PLATE IS INCREASED TO 4-1/2".

DOUBLE ANGLE CONNECTION SCHEDULE

FACTORED REACTION Ru (KIPS)	NUMBER/SIZE OF BOLTS	ANGLE SIZE	WELD SIZE (D)
10 TO 48	(4) 3/4" DIA A325N	∠ 3x3x1/4, 5-1/2" LONG	3/16"
49 TO 76	(6) 3/4" DIA A325N	∠ 3x3x1/4, 8-1/2" LONG	3/16"
77 TO 105	(8) 3/4" DIA A325N	∠ 3x3x1/4, 11-1/2" LONG	3/16"
106 TO 136	(10) 3/4" DIA A325N	∠ 3x3x1/4, 1'-2 1/2" LONG	3/16"

NOTES:

- 3/4" DIAMETER A325N BOLTS MAY BE USED IN LIEU OF INDICATED WELDS AT SUPPORTED BEAM WEB. IF BOLTS ARE USED, PROVIDE 1-1/2" HORIZONTAL EDGE DISTANCE.
- IN ALL CASES, DEPTH OF CONNECTION SHALL BE EQUAL TO OR GREATER THAN T/2 DISTANCE OF SUPPORTED BEAM.



- NOTES:**
- PROVIDE 1-1/4" VERTICAL EDGE DISTANCE.
 - FLOOR SLAB/DECK NOT SHOWN FOR CLARITY.

		STATE OF MAINE PUBLIC SCHOOL PROJECT TITLE: PORTLAND PUBLIC SCHOOLS NEW FRED P. HALL ELEMENTARY SCHOOL LOCATION: 23 ORONO ROAD, PORTLAND, ME TITLE THIS DWG.: CONNECTION SCHEDULES AND DETAILS
DRAWN BY: MJC CHECK BY: DNM		
NO.	DATE	DESCRIPTION
		REVISIONS
	DATE	03/17/17