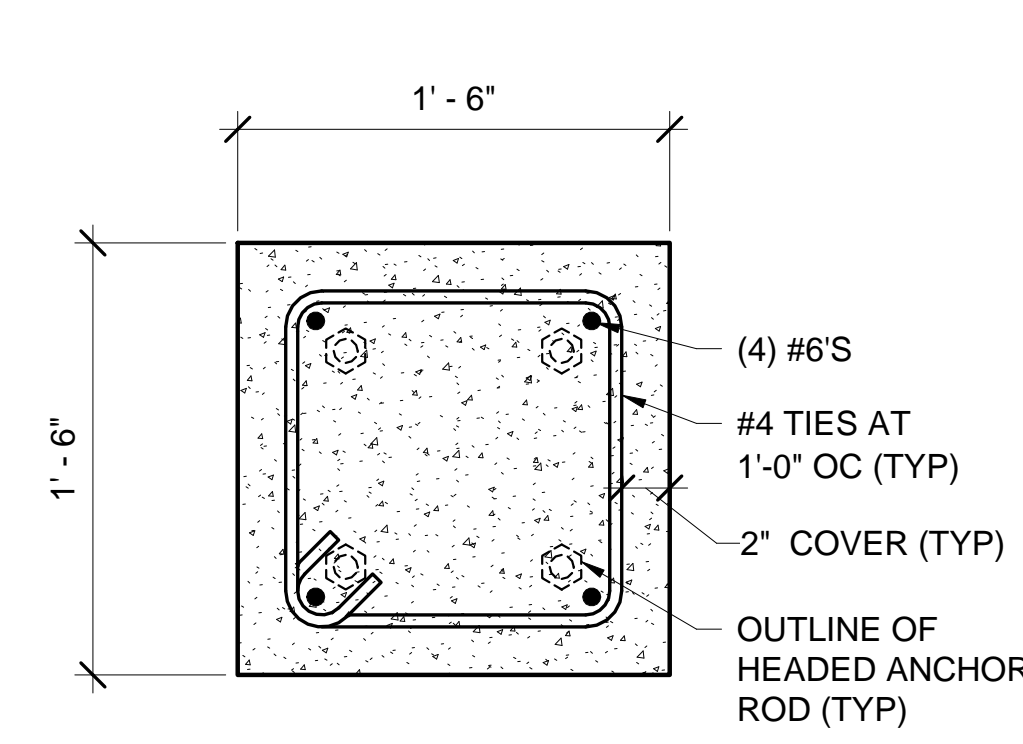


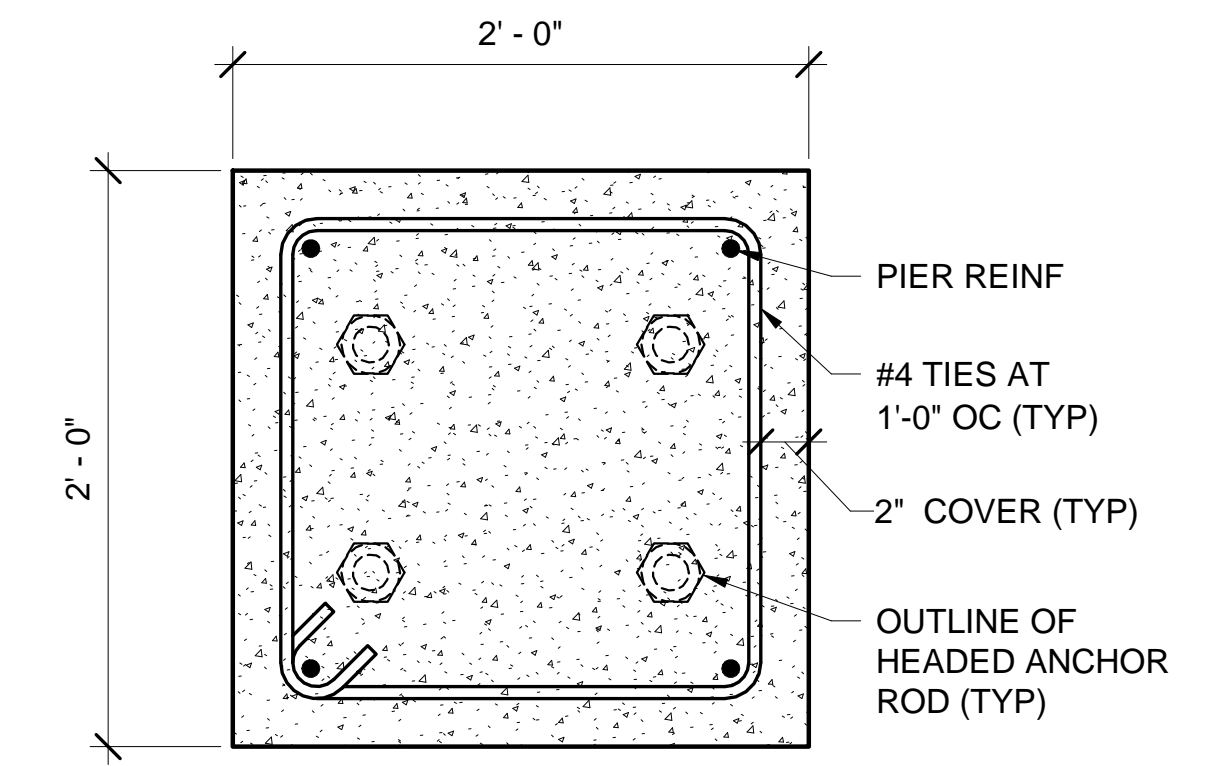
GRAVITY COLUMN BASE PLATE SCHEDULE												
BASE PLATE TYPE	BASE PLATE DETAIL	t	B	L	COL TO PLATE WELD	ANCHOR ROD DIA	ANCHOR ROD EMBED	ANCHOR ROD PROJECTION	ANCHOR ROD EDGE DIST	PIER SIZE	PIER REINF	PIER DETAIL
BP1	5/SF604	1/2"	10"	10"	1/4"	3/4"	1'-0"	4"	1-1/2"	18" x 18"	(4) #6'S	1/SF604
BP2	5/SF604	1/2"	11"	11"	1/4"	3/4"	1'-0"	4"	1-1/2"	18" x 18"	(4) #6'S	1/SF604
BP3	5/SF604	3/4"	11"	11"	1/4"	3/4"	1'-0"	4"	1-1/2"	18" x 18"	(4) #6'S	1/SF604
BP4	5/SF604	5/8"	12"	12"	1/4"	3/4"	1'-0"	4"	1-1/2"	18" x 18"	(4) #6'S	1/SF604
BP5	5/SF604	3/4"	12"	12"	1/4"	3/4"	1'-0"	4"	1-1/2"	18" x 18"	(4) #6'S	1/SF604
BP6	5/SF604	7/8"	12"	12"	1/4"	3/4"	1'-0"	4"	1-1/2"	18" x 18"	(4) #6'S	1/SF604
BP7	5/SF604	1"	12"	12"	1/4"	3/4"	1'-0"	4"	1-1/2"	18" x 18"	(4) #6'S	1/SF604
BP8	5/SF604	1"	12-3/4"	12-3/4"	1/4"	3/4"	1'-0"	4"	1-1/2"	18" x 18"	(4) #6'S	1/SF604
BP9	5/SF604	5/8"	13"	13"	1/4"	3/4"	1'-0"	4"	1-1/2"	18" x 18"	(4) #6'S	1/SF604
BP10	5/SF604	3/4"	15"	15"	1/4"	3/4"	1'-0"	4"	1-1/2"	18" x 18"	(4) #6'S	1/SF604
BP11	5/SF604	7/8"	15"	15"	1/4"	3/4"	1'-0"	4"	1-1/2"	18" x 18"	(4) #6'S	1/SF604
BP12	5/SF604	3/4"	14-3/4"	14-3/4"	1/4"	3/4"	1'-0"	4"	1-1/2"	18" x 18"	(4) #6'S	1/SF604

NOTES:
1. SCHEDULE APPLIES TO ALL COLUMNS EXCEPT MOMENT FRAME AND BRACED FRAME LOCATIONS.
2. USE ASTM F1554, GRADE 36 ANCHOR RODS.



- NOTES:**
- PROVIDE (3) #4 TIES WITH 2" SPACING, TYPICAL TOP AND BOTTOM OF VERTICAL REINFORCING STEEL.
 - LOCATE BOTTOM TIES IN COLUMN FOOTING.
 - LOCATE TOP TIE WITHIN 1-1/2" OF TOP OF VERTICAL REINFORCING STEEL.

1 TYP PIER DETAIL A
SF604/ SCALE: 1 1/2" = 1'-0"

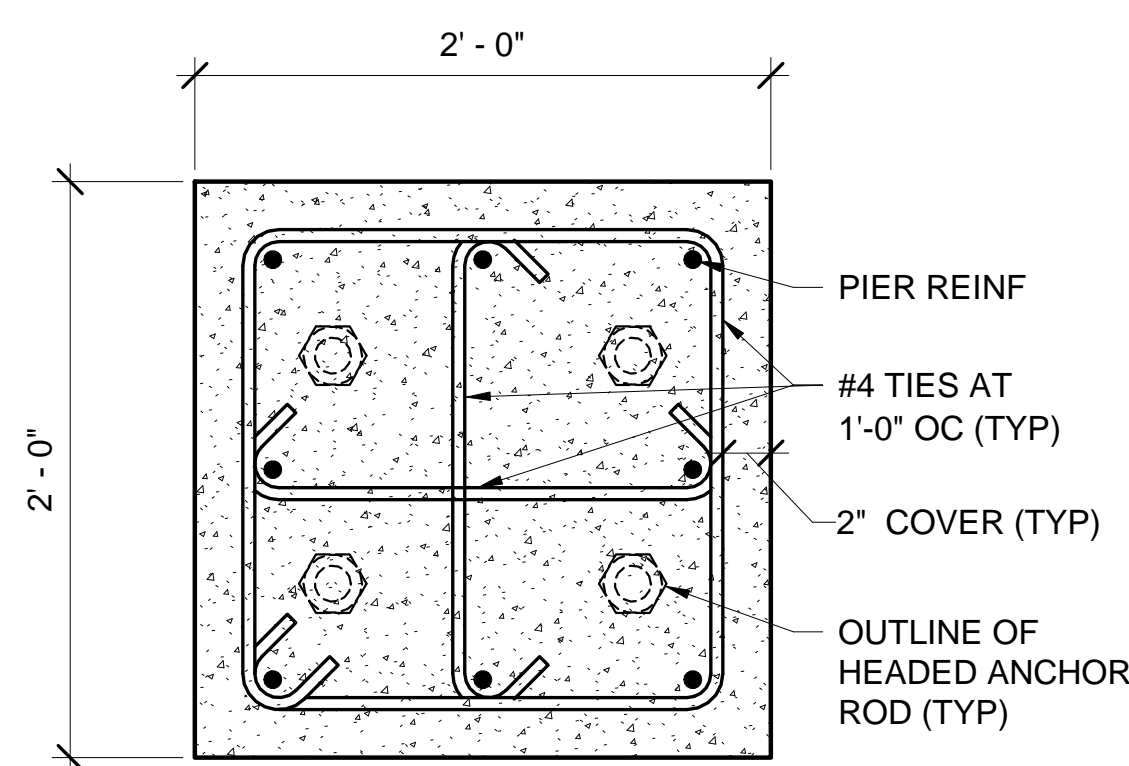


- NOTES:**
- PROVIDE 2" SPACING FOR TIES AT TOP AND BOTTOM OF VERTICAL REINFORCING STEEL.
 - LOCATE BOTTOM TIES IN COLUMN FOOTING.
 - LOCATE TOP TIE WITHIN 1-1/2" OF TOP OF VERTICAL REINFORCING STEEL.

2 TYP PIER DETAIL B
SF604/ SCALE: 1 1/2" = 1'-0"

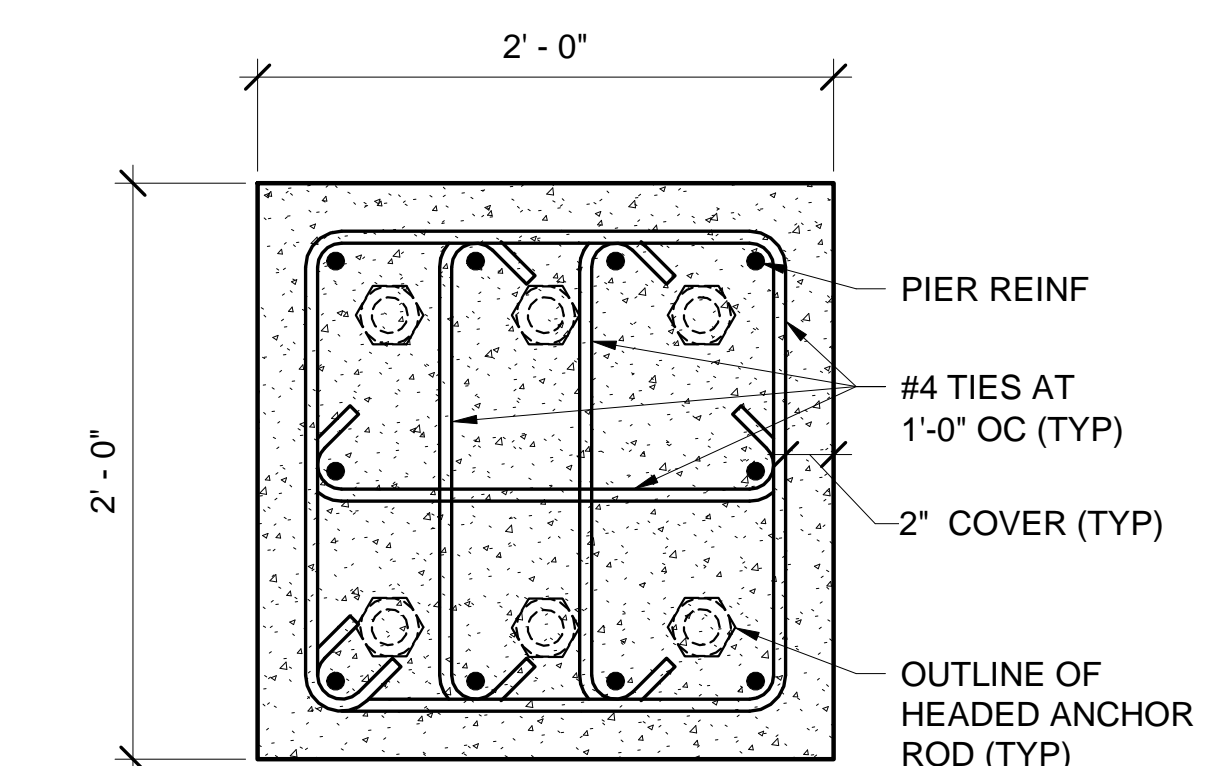
MOMENT FRAME/BRACED FRAME COLUMN BASE PLATE SCHEDULE													
BASE PLATE TYPE	BASE PLATE DETAIL	t	B	L	COL TO PLATE WELD	ANCHOR ROD DIA	ANCHOR ROD EMBED	ANCHOR ROD PROJECTION	ANCHOR ROD EDGE DIST	PIER SIZE	PIER REINF	PIER DETAIL	TOP AND BOTTOM TIES
BP20	6/SF604	1"	18"	18"	5/16"	1"	1'-0"	8"	6"	24" x 24"	(4) #6'S	2/SF604	(4) #4'S
BP21	5/SF604	1"	18"	18"	5/16"	1"	1'-0"	8"	1-1/2"	24" x 24"	(4) #6'S	2/SF604	(4) #4'S
BP22	5/SF604	1"	18"	18"	5/16"	1"	1'-0"	8"	1-1/2"	24" x 24"	(4) #6'S	2/SF604	(6) #4'S
BP23	6/SF604	1"	20"	20"	5/16"	1"	1'-0"	8"	6"	24" x 24"	(4) #6'S	2/SF604	(4) #4'S
BP24	6/SF604	1"	20"	20"	5/16"	1"	1'-0"	8"	6"	24" x 24"	(4) #6'S	2/SF604	(5) #4'S
BP25	6/SF604	1"	20"	20"	5/16"	1-1/4"	1'-0"	8"	6"	24" x 24"	(4) #6'S	2/SF604	(5) #4'S
BP26	6/SF604	1"	20"	20"	5/16"	1-1/4"	1'-0"	8"	6"	24" x 24"	(4) #6'S	2/SF604	(6) #4'S
BP27	6/SF604	1-1/4"	20"	20"	5/16"	1-1/4"	1'-0"	8"	6"	24" x 24"	(4) #6'S	2/SF604	(6) #4'S
BP28	5/SF604	1"	11"	11"	1/4"	1"	1'-0"	8"	1-1/2"	24" x 24"	(4) #6'S	2/SF604	(4) #4'S
BP29	5/SF604	1"	13"	13"	1/4"	1"	1'-0"	8"	1-1/2"	24" x 24"	(4) #6'S	2/SF604	(4) #4'S
BP30	5/SF604	1-1/2"	13"	13"	1/4"	1-1/2"	1'-0"	8"	1-3/4"	24" x 24"	(8) #6'S	3/SF604	(4) #4'S
BP31	5/SF604	1"	15"	15"	1/4"	1"	1'-0"	8"	1-1/2"	24" x 24"	(4) #6'S	2/SF604	(4) #4'S
BP32	5/SF604	1-1/4"	15"	15"	1/4"	1"	1'-0"	8"	1-1/2"	24" x 24"	(4) #6'S	2/SF604	(4) #4'S
BP33	7/SF604	1-1/2"	18"	18"	3/8"	1-1/2"	1'-0"	8"	2-1/2"	24" x 24"	(10) #6'S	4/SF604	(5) #4'S
BP34	5/SF604	1"	20"	17"	5/16"	1-1/4"	1'-0"	8"	6"	24" x 24"	(4) #6'S	2/SF604	(6) #4'S

NOTES:
1. USE ASTM F1554, GRADE 36 ANCHOR RODS.
2. PROVIDE 1-13/16" DIAMETER OVERSIZED HOLES IN COLUMN BASEPLATE FOR 1" DIAMETER ANCHOR RODS. PROVIDE 2-1/16" DIAMETER OVERSIZED HOLES IN COLUMN BASEPLATE FOR 1-1/4" DIAMETER ANCHOR RODS. PROVIDE 2-5/16" DIAMETER OVERSIZED HOLES IN COLUMN BASEPLATE FOR 1-1/2" DIAMETER ANCHOR RODS.



- NOTES:**
- PROVIDE 2" SPACING FOR TIES AT TOP AND BOTTOM OF VERTICAL REINFORCING STEEL.
 - LOCATE BOTTOM TIES IN COLUMN FOOTING.
 - LOCATE TOP TIE WITHIN 1-1/2" OF TOP OF VERTICAL REINFORCING STEEL.

3 TYP PIER DETAIL C
SF604/ SCALE: 1 1/2" = 1'-0"

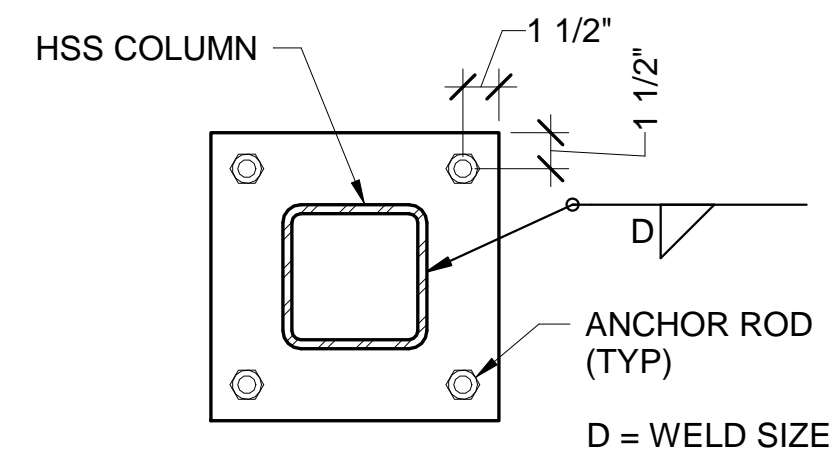


- NOTES:**
- PROVIDE 2" SPACING FOR TIES AT TOP AND BOTTOM OF VERTICAL REINFORCING STEEL.
 - LOCATE BOTTOM TIES IN COLUMN FOOTING.
 - LOCATE TOP TIE WITHIN 1-1/2" OF TOP OF VERTICAL REINFORCING STEEL.

4 TYP PIER DETAIL D
SF604/ SCALE: 1 1/2" = 1'-0"

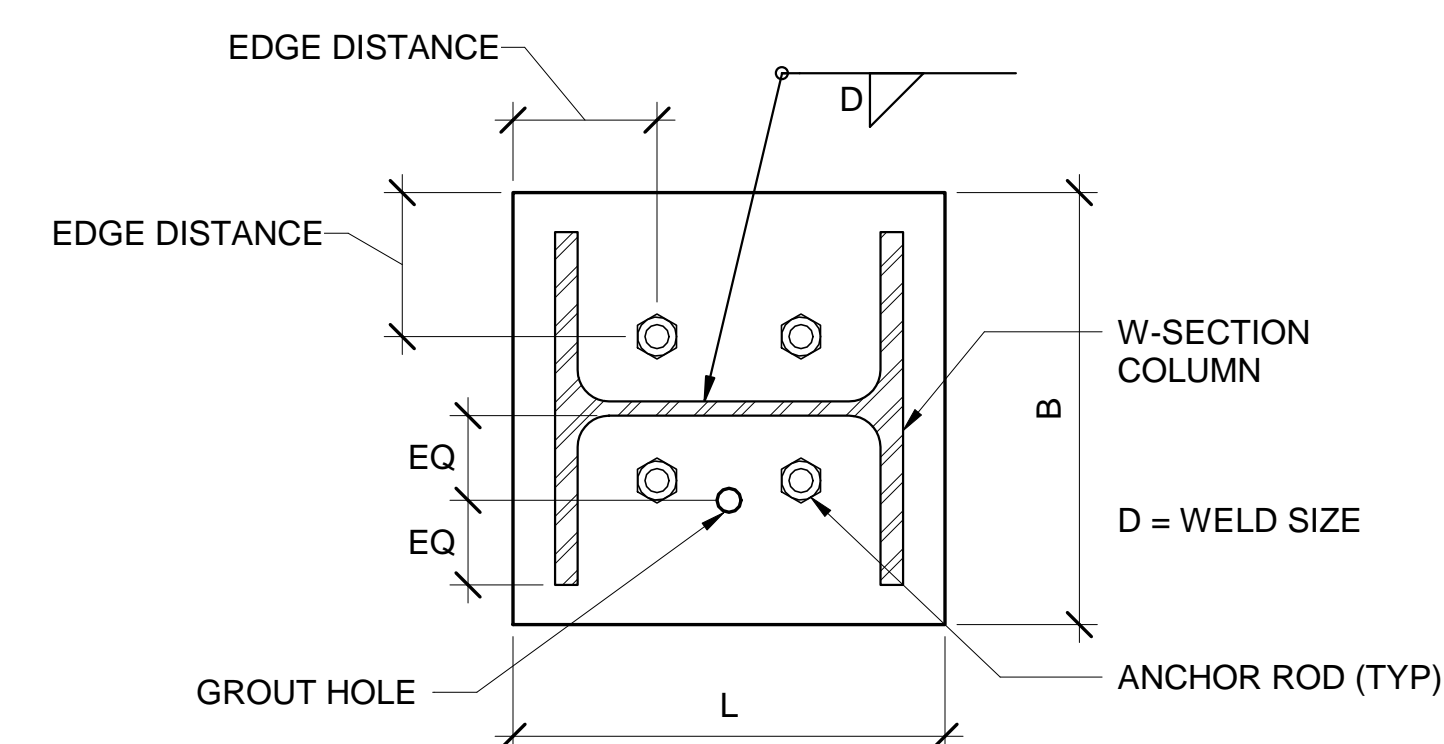
COLUMN CAP PLATE SCHEDULE				
CAP PLATE TYPE	t	B	L	DIA
CP1	1/4"	4"	4"	-
CP2	1/4"	5"	5"	-
CP3	1/4"	6"	6"	-
CP4	1/4"	7"	7"	-
CP5	1/4"	8"	8"	-
CP6	1/4"	9"	9"	-
CP7	1/4"	10"	10"	-
CP8	1/4"	-	-	6.63"
CP9	1/4"	-	-	8.63"

NOTE:
1. FLUSH WELD CAP PLATES UNLESS NOTED OTHERWISE.
2. * - CAP PLATE TO MATCH COLUMN DIMENSIONS.



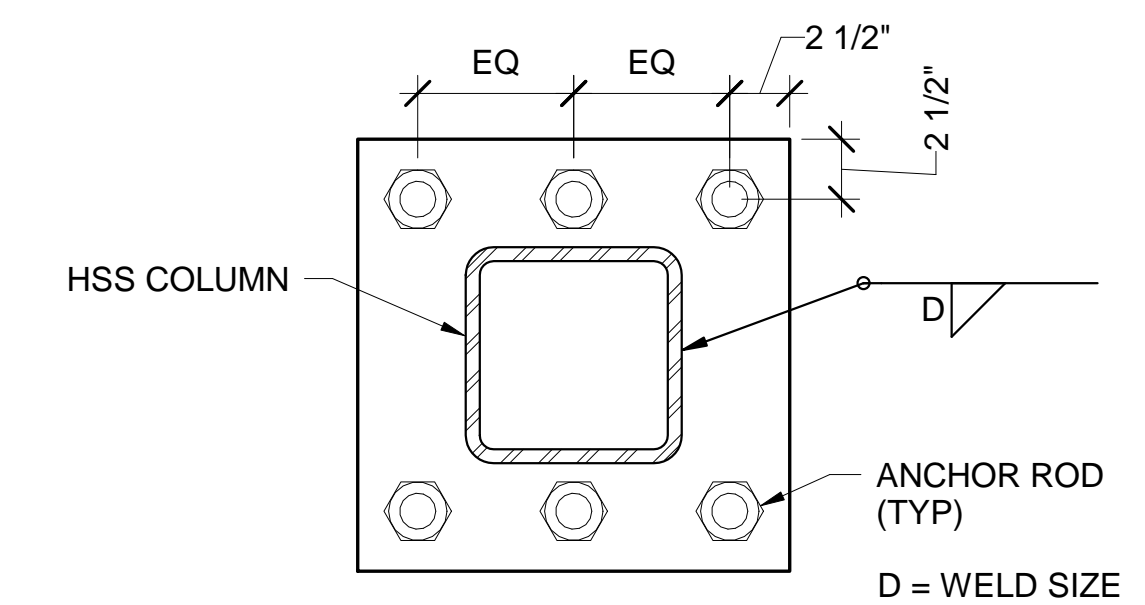
- NOTE:**
PROVIDE 3/4" MAXIMUM NON-SHRINK GROUT UNDER BASE PLATES.

5 TYP HSS COLUMN BASE PLATE DETAIL
SF604/ SCALE: 1 1/2" = 1'-0"



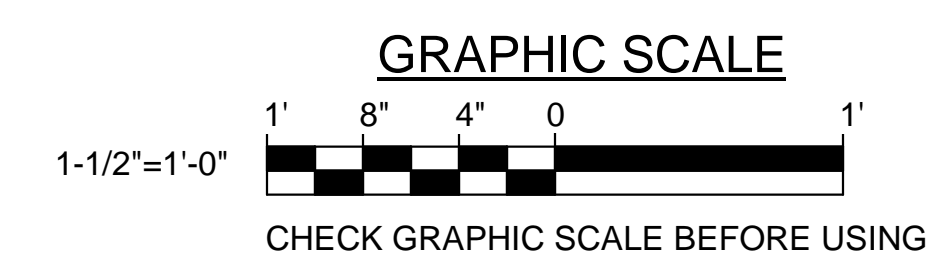
- NOTE:**
PROVIDE 1" MAXIMUM NON-SHRINK GROUT UNDER BASE PLATES.

6 TYP W-SECTION COLUMN BASE PLATE DETAIL
SF604/ SCALE: 1 1/2" = 1'-0"



- NOTES:**
- PROVIDE 3/4" MAXIMUM NON-SHRINK GROUT UNDER BASE PLATES.
 - THE ROW OF (3) ANCHOR RODS SHALL RUN IN THE EAST-WEST DIRECTION.

7 HSS COLUMN BASE PLATE DETAIL
SF604/ SCALE: 1 1/2" = 1'-0"



STATE OF MAINE PUBLIC SCHOOL PROJECT		DRAWN BY: MJC	
TITLE: PORTLAND PUBLIC SCHOOLS NEW FRED P. HALL ELEMENTARY SCHOOL		CHECK BY: DNM	
LOCATION: 23 ORONO ROAD, PORTLAND, ME		DATE: 03/17/17	
TITLE THIS DWG: COLUMN BASE PLATE SCHEDULES AND DETAILS		NO. DATE DESCRIPTION BY NO.	
OAK POINT ASSOCIATES		REVISIONS	

STATE OF MAINE
DAVID H. MARTIN
No. 8622
LICENSED PROFESSIONAL ENGINEER

NO. DATE DESCRIPTION BY NO.
REVISIONS

DATE: 03/17/17

231 Main Street, Biddeford, Maine 04005 207.283.9192

118 OF 312