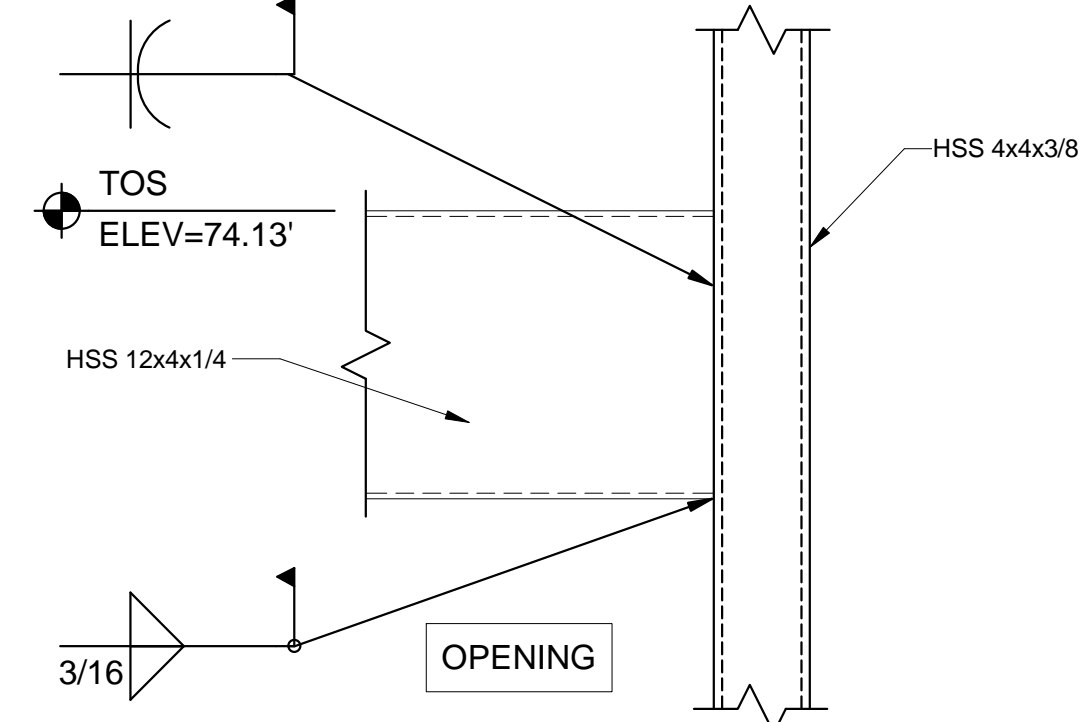
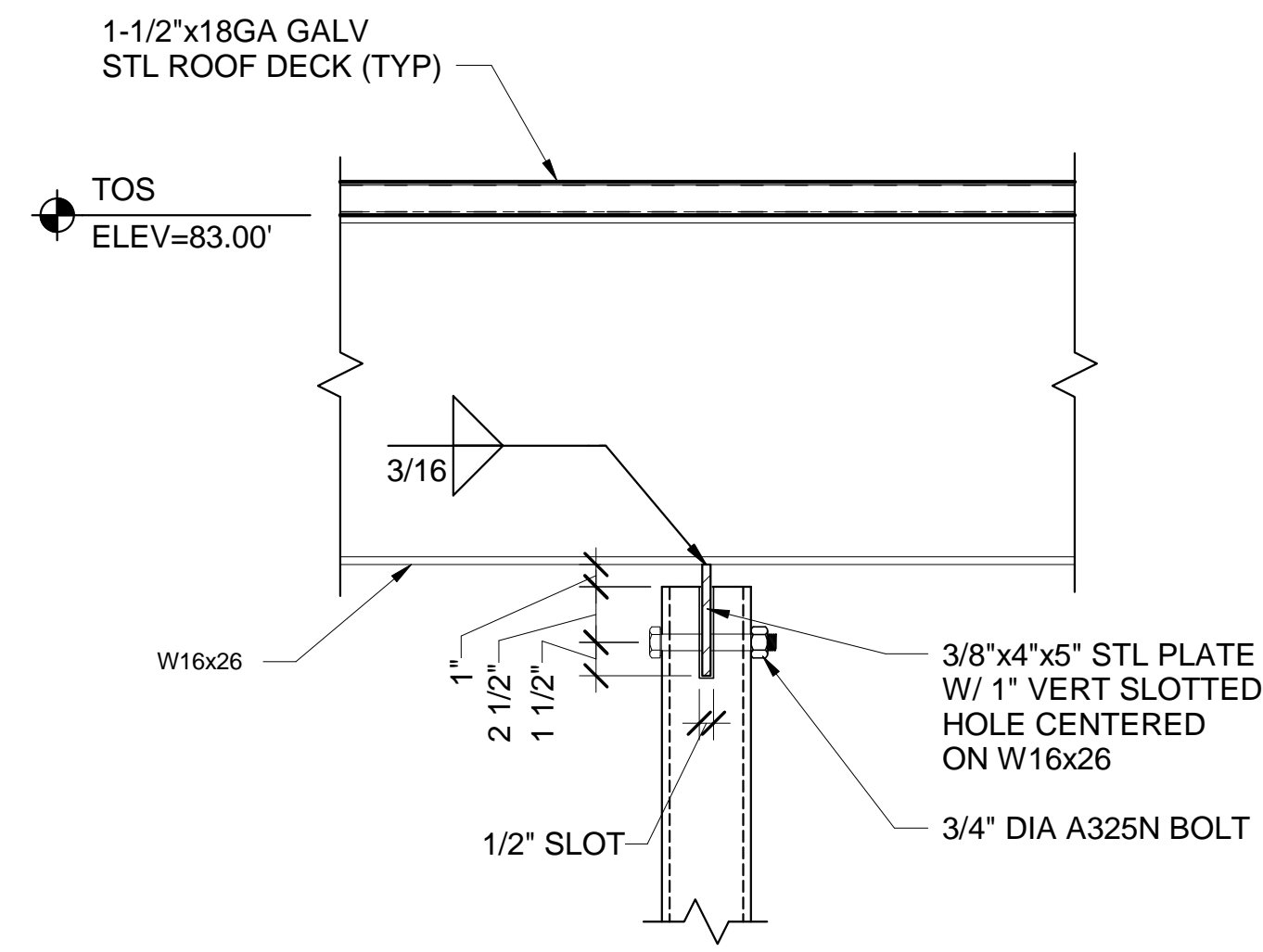


- NOTES:
1. PROVIDE BRACES WHERE FLUTES OF COMPOSITE STEEL DECK/ ROOF DECK ARE PERPENDICULAR TO SUPPORTING BEAM.
  2. LOCATE ANGLE AT COMPOSITE STEEL DECK/ROOF DECK AT UNDERSIDE OF DECK FLUTE.

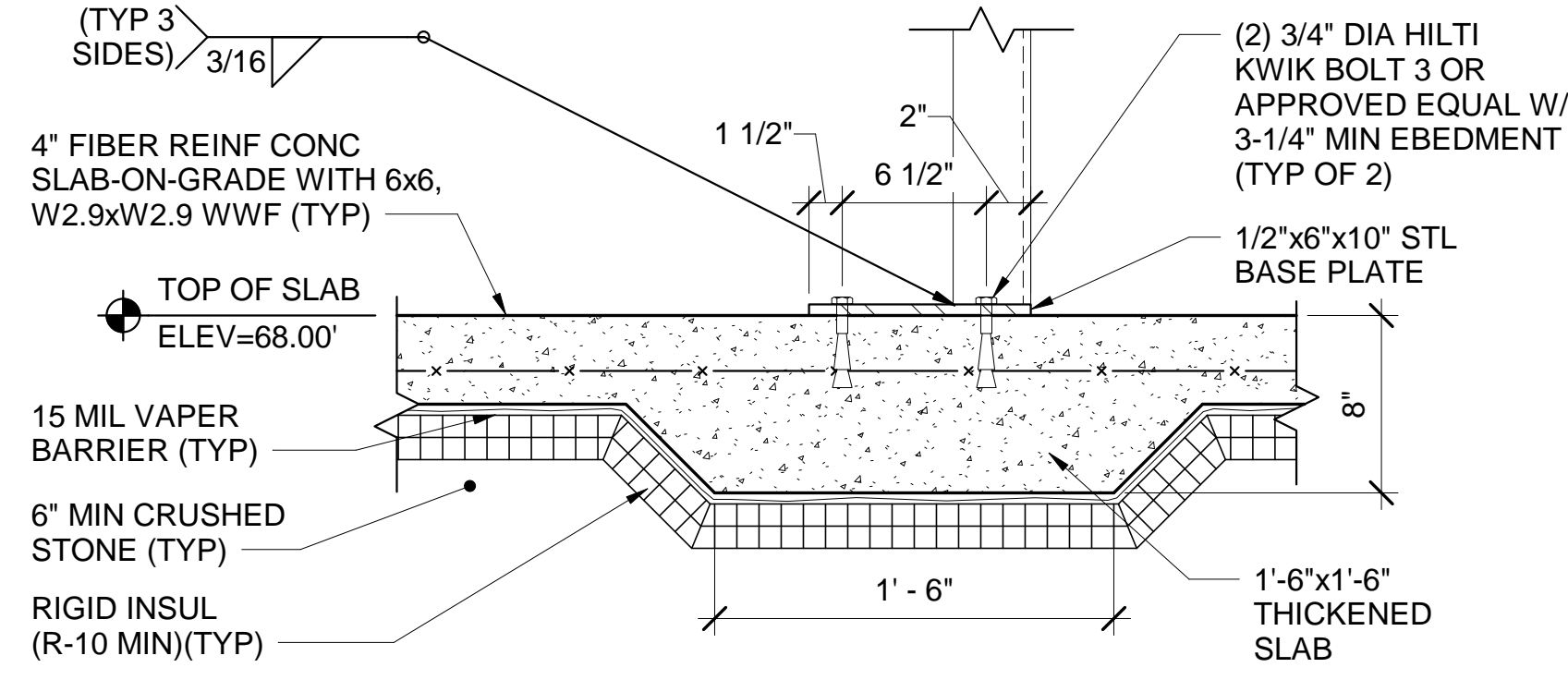
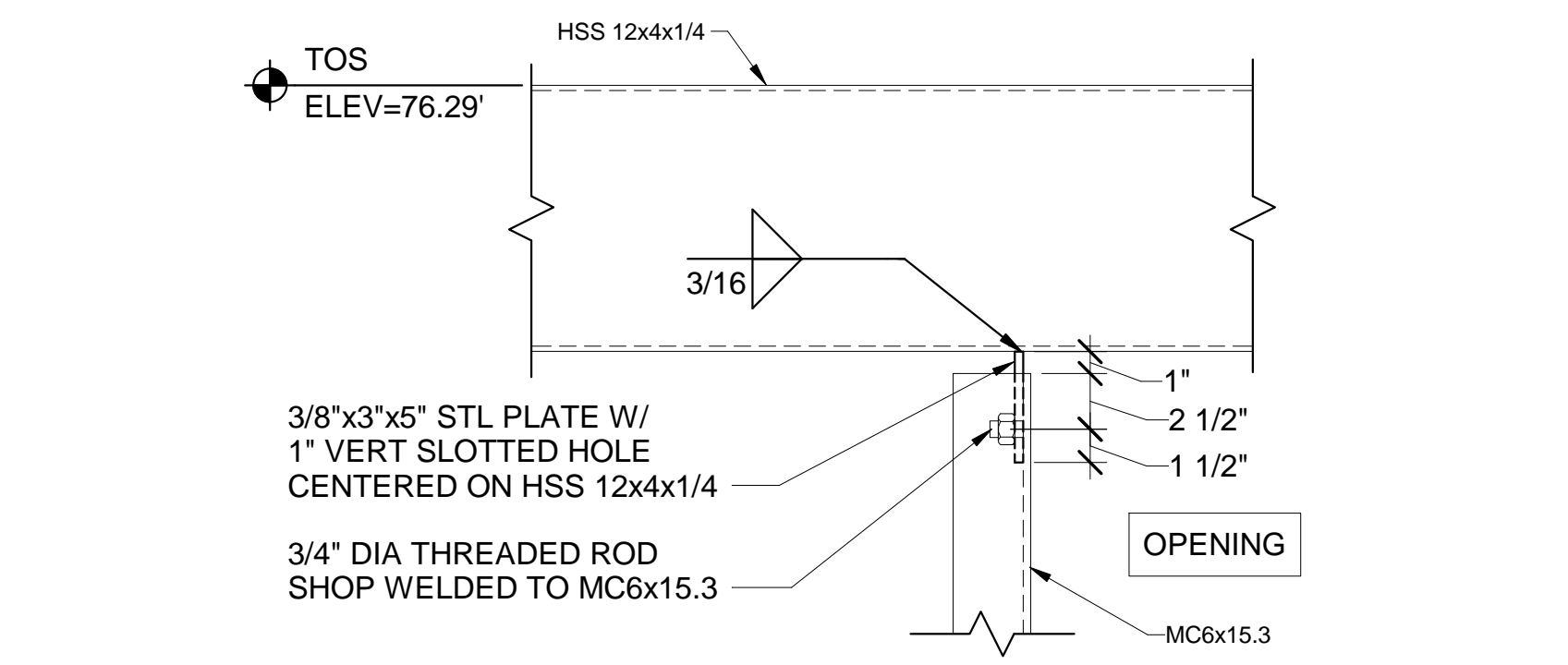
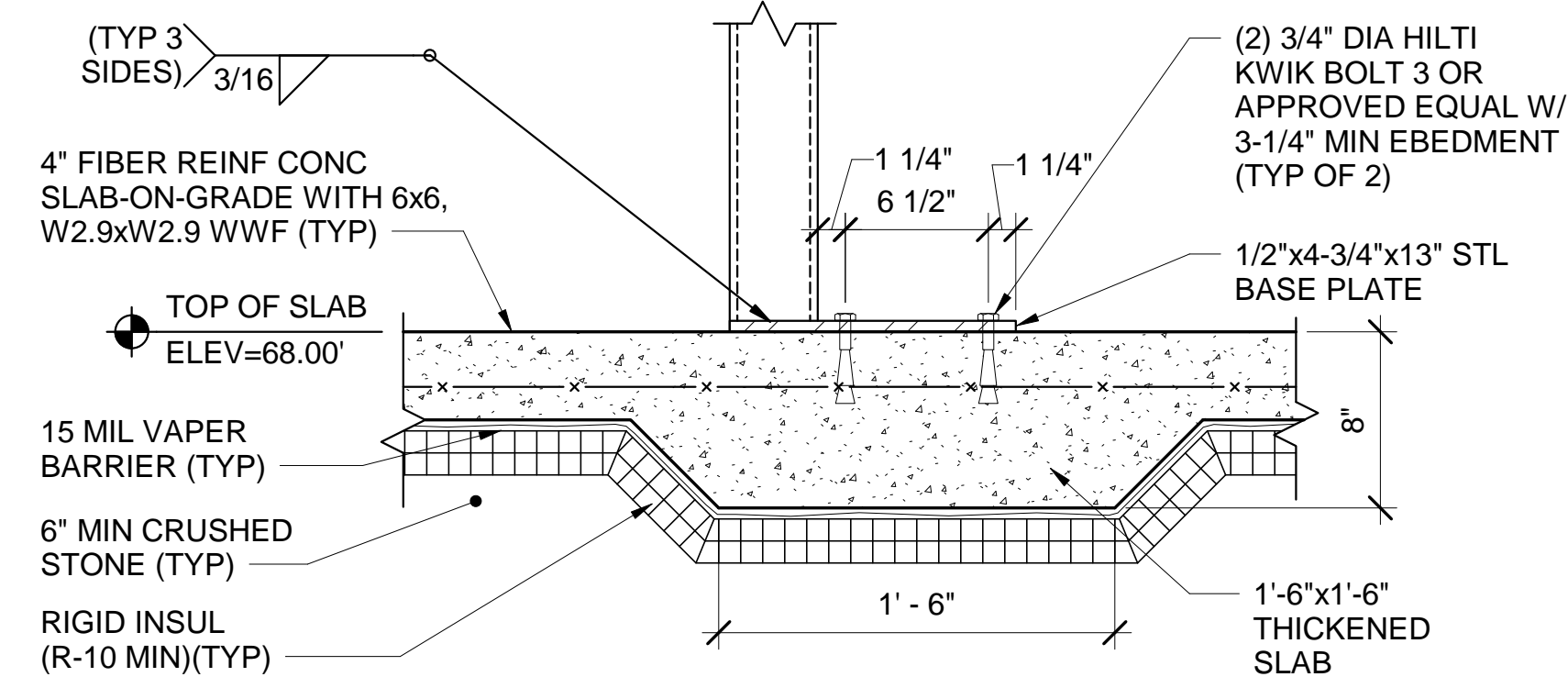
**1 TYP BEAM FLANGE BRACING DETAIL**

SF507 SCALE: 1 1/2" = 1'-0"



**2 HSS 4x4x3/8 POST CONN DETAIL**

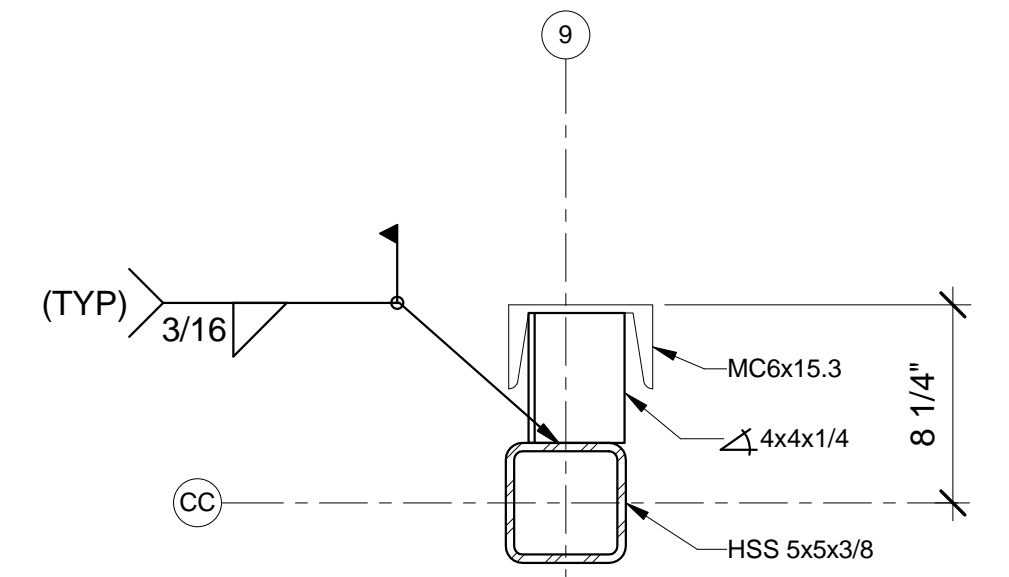
SF104 SCALE: 1 1/2" = 1'-0"



- NOTES:
1. MC6x15.3 IS OFFSET FROM CENTER OF HSS 12x4x1/4 5/8" TO THE EAST TO ALIGN WITH THE COLD-FORMED WALL.
  2. AT MC6x15.3 ADJACENT TO COLUMN CC/9, IN LIEU OF BASE PLATE, SEE DETAIL 4/SF507 FOR CONNECTION OF MC6x15.3 TO HSS 5x5x3/8 COLUMN.

**3 MC6x15.3 JAMB CONN DETAIL**

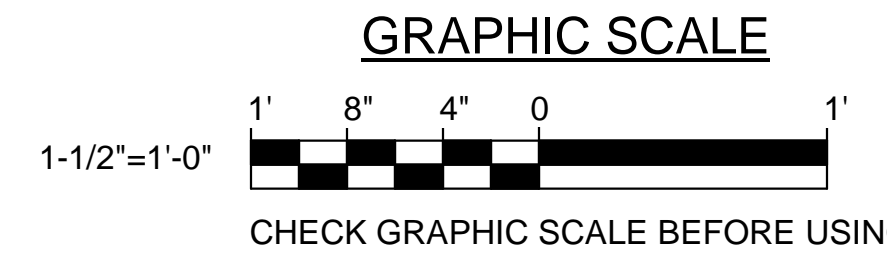
SF104 SCALE: 1 1/2" = 1'-0"



- NOTES:
1. LOCATE BOTTOM OF ANGLE 4" ABOVE TOP OF SLAB ELEVATION.
  2. BOTTOM OF MC6x15.3 TO STOP AT TOP OF SLAB ELEVATION (68.00).

**4 MC6x15.3 TO HSS 5x5x3/8 CONN DETAIL**

SF507 SCALE: 1 1/2" = 1'-0"



STATE OF MAINE PUBLIC SCHOOL PROJECT	
TITLE PORTLAND PUBLIC SCHOOLS NEW FRED P. HALL ELEMENTARY SCHOOL	
LOCATION 23 ORONO ROAD, PORTLAND, ME	
TITLE THIS DWG. STRUCTURAL DETAILS 7	
DRAWN BY: MJC	CHECKED BY: DNM
NO. DATE	DESCRIPTION
BY NO.	REVISIONS
DATE	03/17/17
DRAWING NO. SF507 SHEET NO. 114 OF 312	