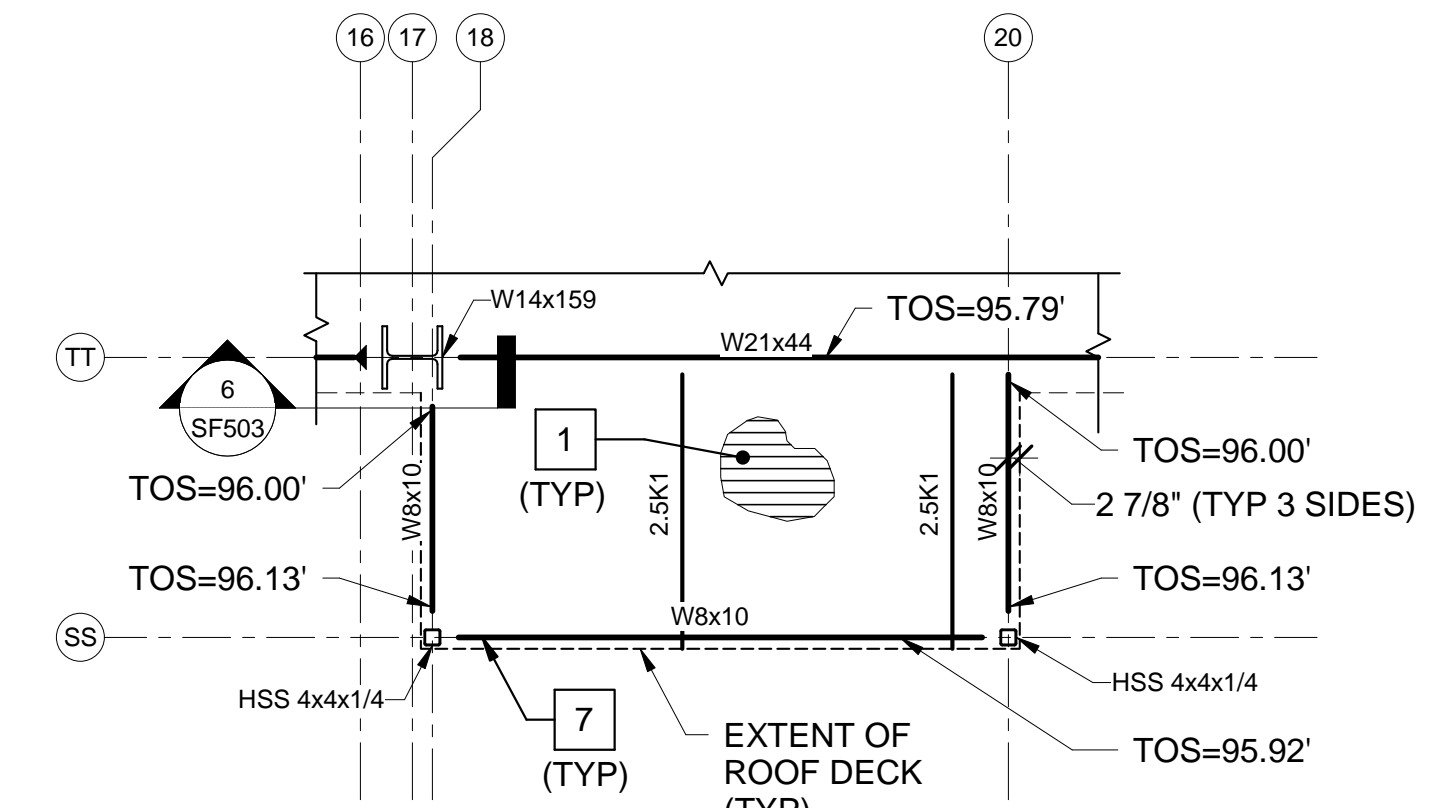
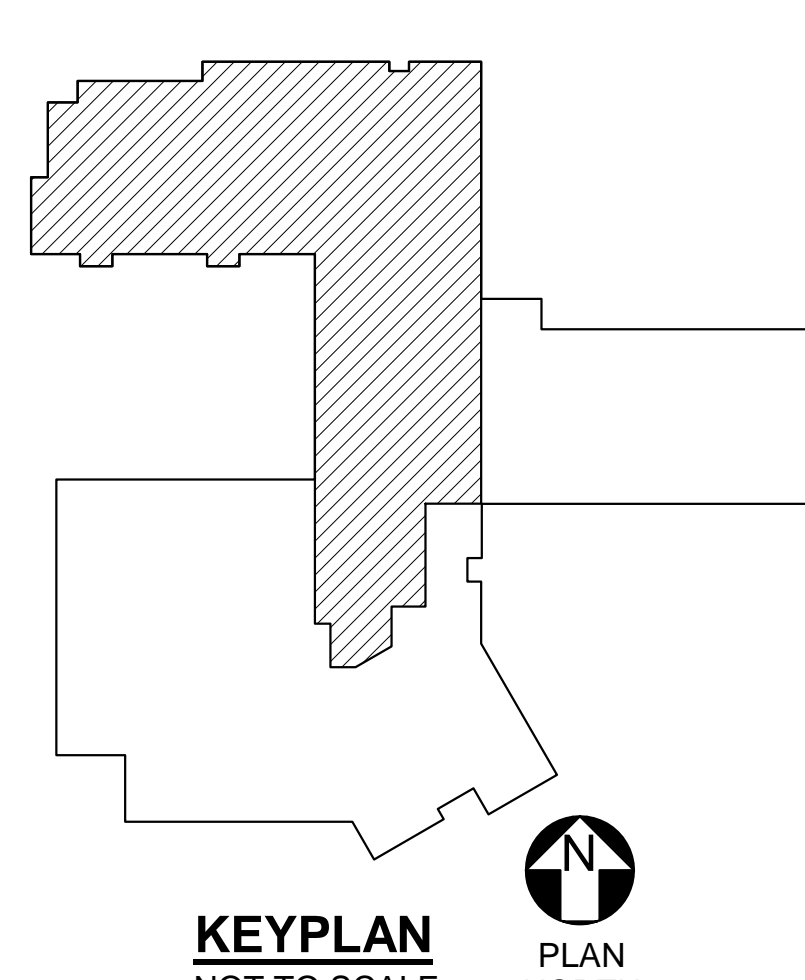


- DRAWING NOTES:**
- END REACTIONS (R_u) ARE FACTORED.
 - W8x10'S HAVE A FACTORED END REACTION OF 10 KIPS UNLESS NOTED OTHERWISE.
 - REFER TO SHEET SF605 FOR SHEAR PLATE CONNECTION SCHEDULE AND SHEET SF607 SEISMIC COLLECTOR CONNECTION SCHEDULE.
 - REFER TO SHEET SF606 FOR MOMENT CONNECTION SCHEDULE.

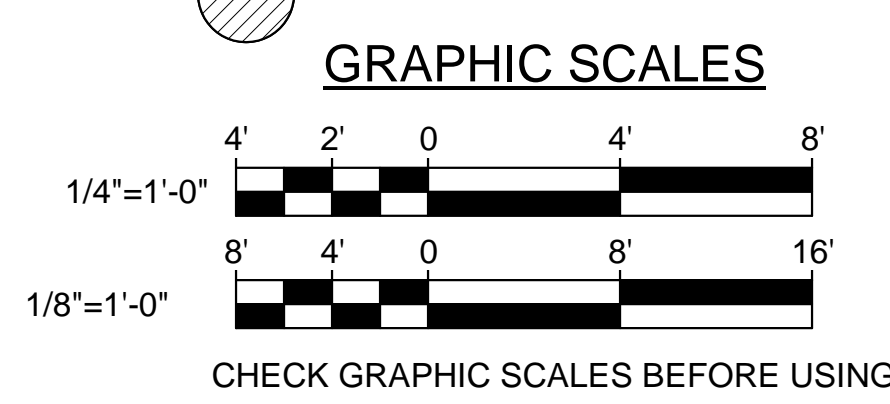
- KEYNOTES: (THIS SHEET ONLY)**
- 1-1/2" x 18 GAGE GALVANIZED STEEL ROOF DECK.
 - SEISMIC LOAD RESISTING COLLECTOR ELEMENT.
 - CONTINUOUS HORIZONTAL UPLIFT BRIDGING AT FIRST PANEL POINT OF BOTTOM CHORD OF JOIST. INSTALLED PER THE MANUFACTURER'S PRINTED INSTRUCTIONS.
 - BRIDGING INSTALLED PER THE MANUFACTURER'S PRINTED INSTRUCTIONS.
 - OPERABLE PARTITION SUPPORT BEAM. PROVIDE DRILLED HOLES IN BOTTOM FLANGE FOR ATTACHMENT OF PARTITION SUPPORT HANGERS. COORDINATE WITH PARTITION MANUFACTURER.
 - 1'-11" WIDE x 1'-5" HIGH BEAM WEB PENETRATION. SEE DETAIL 10/SF501.
 - DECK SUPPORT BUILT-UP PLATE. SEE DETAIL 6/SF501.
 - C4x5.4 OUTRIGGER ALIGNED WITH ROOF BEAMS. SEE DETAIL 12/SF501.
 - 3" x 18/18 GAGE GALVANIZED STEEL ROOF DECK.
 - C8x11.5 HEADER AT ROOF OPENING/MECHANICAL UNIT. COORDINATE EXACT LOCATION WITH MECHANICAL AND/OR ARCHITECTURAL PLANS. SEE DETAIL 3/SF501.



2 PROJECT RM ROOF FRAMING PLAN
 SF103 SCALE: 1/4" = 1'-0"
 PLAN NORTH



1 PARTIAL ROOF FRAMING PLAN
 SF103 SCALE: 1/8" = 1'-0"
 PLAN NORTH



NOTE:
 TOP OF STEEL ELEVATION = 95.79',
 UNLESS NOTED OTHERWISE.

STATE OF MAINE PUBLIC SCHOOL PROJECT	
TITLE: PORTLAND PUBLIC SCHOOLS NEW FRED P. HALL ELEMENTARY SCHOOL	
LOCATION: 23 ORONO ROAD, PORTLAND, ME	
TITLE THIS DWG: PARTIAL ROOF FRAMING PLAN	
DRAWN BY: JEG	CHECKED BY: DNM
DATE: 03/17/17	DATE: 03/17/17
NO. 1	DESCRIPTION
	REVISIONS