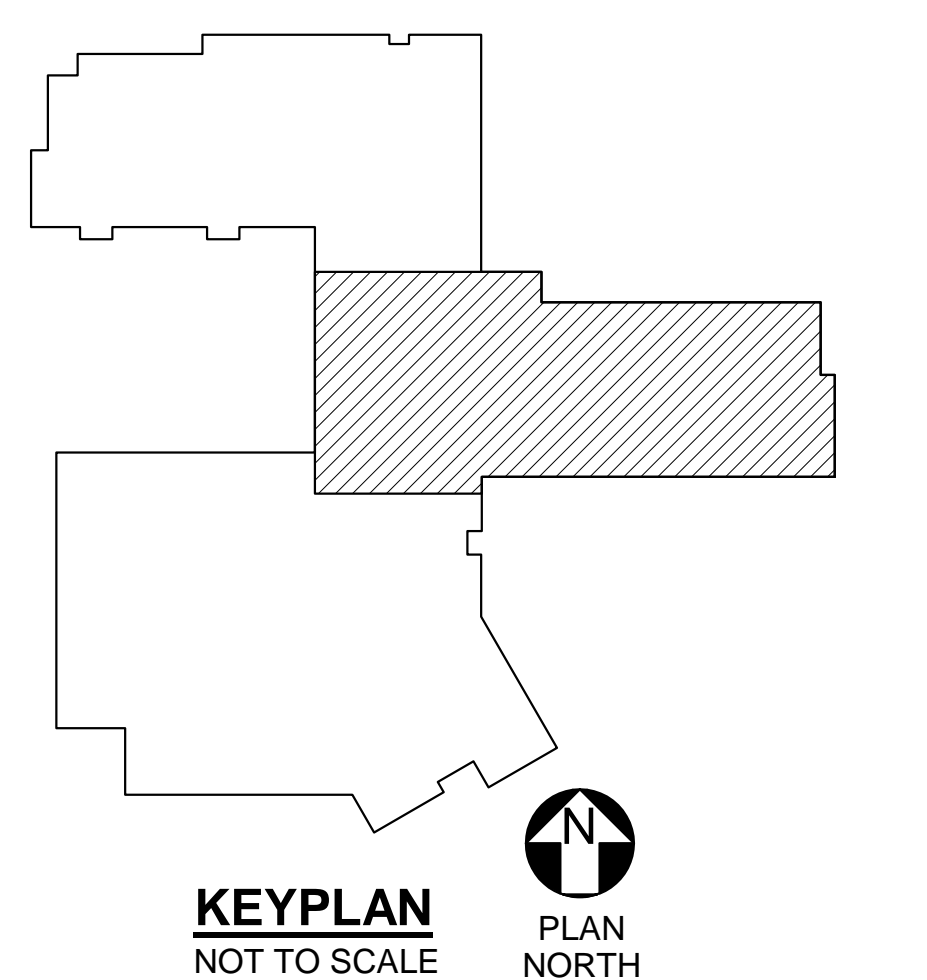
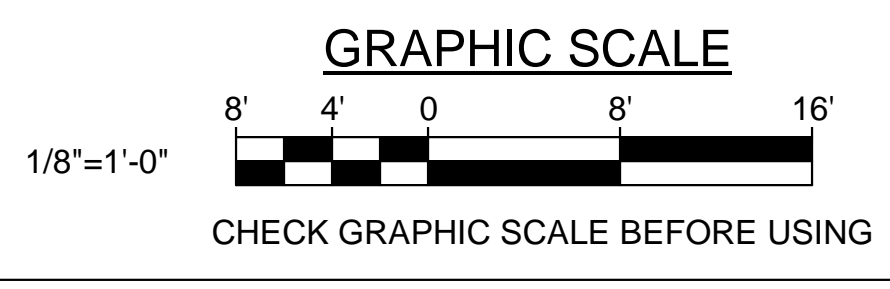


- DRAWING NOTES:**
1. END REACTIONS (Ru) ARE FACTORED.
 2. W8x10'S HAVE A FACTORED END REACTION OF 10 KIPS UNLESS NOTED OTHERWISE.
 3. REFER TO SHEET SF605 FOR SHEAR PLATE CONNECTION SCHEDULE AND SHEET SF607 FOR SEISMIC COLLECTOR CONNECTION SCHEDULE.
 4. REFER TO SHEET SF606 FOR MOMENT CONNECTION SCHEDULE.

- KEYNOTES: (THIS SHEET ONLY)**
- 1 2' x 18 GAGE COMPOSITE STEEL DECK WITH 4-3/4" LIGHTWEIGHT CONCRETE SLAB AND 6x6, W2.9xW2.9 WELDED WIRE FABRIC.
 - 2 3' x 16 GAGE COMPOSITE STEEL DECK.
 - 3 #4'S, 4'-0" LONG, AT 12" ON-CENTER. SEE DETAIL 1/SF501.
 - 4 SEISMIC LOAD RESISTING COLLECTOR ELEMENT.
 - 5 DECK SUPPORT ANGLE. SEE DETAIL 9/SF501 (SIMILAR).
 - 6 C4x5.4 OUTRIGGER ALIGNED WITH ROOF BEAMS. SEE DETAIL 12/SF501.
 - 7 W8x10 HEADER AT FLOOR OPENING. COORDINATE EXACT LOCATION WITH MECHANICAL AND/OR ARCHITECTURAL PLANS.
 - 8 CONTINUOUS 3/8" BENT STEEL PLATE POUR STOP.
 - 9 W12x26 FIRE DOOR SUPPORT BEAM. PROVIDE 1-5/8"x1-5/8" COLD-FORMED STEEL SLOTTED FRAMING AT BOTTOM FLANGE FOR ATTACHMENT OF PARTITION SUPPORT HANGERS. COORDINATE WITH FIRE DOOR MANUFACTURER.
 - 10 W12x26 TO BEAM CONNECTION. PROVIDE (4) 3/4" DIAMETER A325N BOLTS WITH 1-1/2" EDGE DISTANCES.

1 PARTIAL SECOND FLOOR/LOW ROOF FRAMING PLAN
 SF102 SCALE: 1/8" = 1'-0"
 PLAN NORTH

- NOTES:**
1. TOP OF STEEL ELEVATION = 81.60', UNLESS NOTED OTHERWISE.
 2. (*) - TOP OF STEEL ELEVATION = 81.52', UNLESS NOTED OTHERWISE.



STATE OF MAINE PUBLIC SCHOOL PROJECT	
TITLE: PORTLAND PUBLIC SCHOOLS NEW FRED P. HALL ELEMENTARY SCHOOL	
LOCATION: 23 ORONO ROAD, PORTLAND, ME	
TITLE THIS DWG.: PARTIAL SECOND FLOOR/LOW ROOF FRAMING PLAN	
DRAWN BY: JEG	CHECKED BY: DNM
DATE: 03/17/17	DATE: 03/17/17
NO. DATE	DESCRIPTION
	REVISIONS