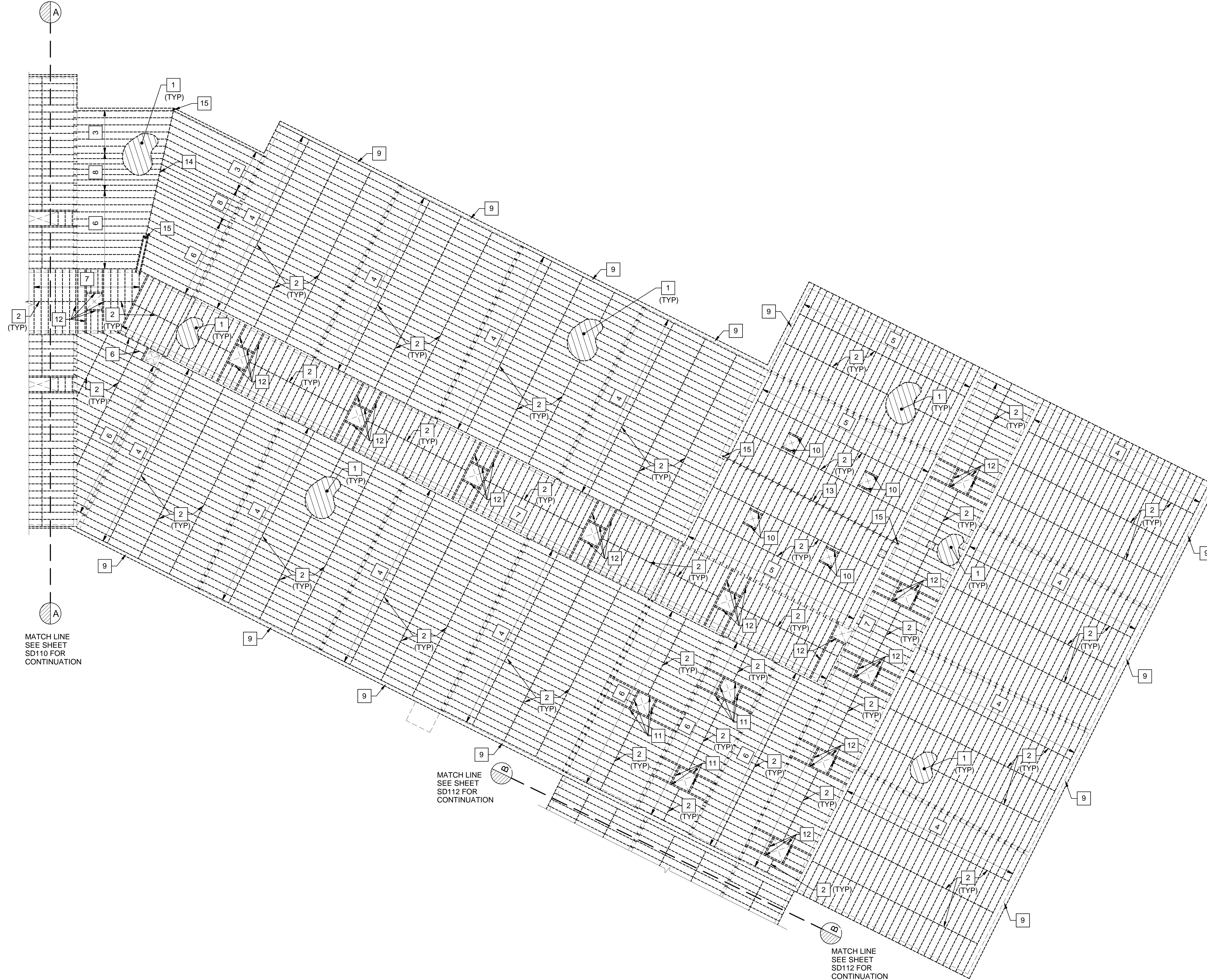


MATCH LINE  
SEE SHEET  
SD110 FOR  
CONTINUATION



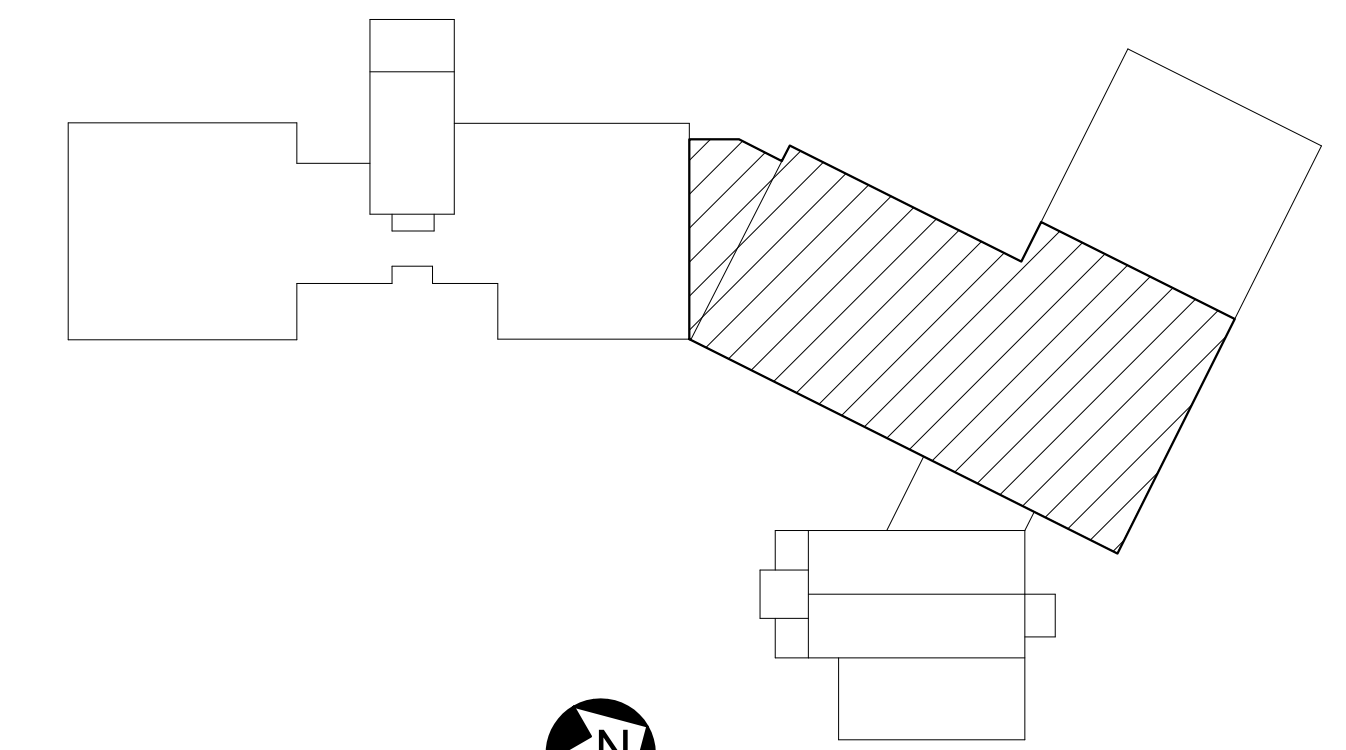
MATCH LINE  
SEE SHEET  
SD110 FOR  
CONTINUATION

MATCH LINE  
SEE SHEET  
SD112 FOR  
CONTINUATION

MATCH LINE  
SEE SHEET  
SD112 FOR  
CONTINUATION

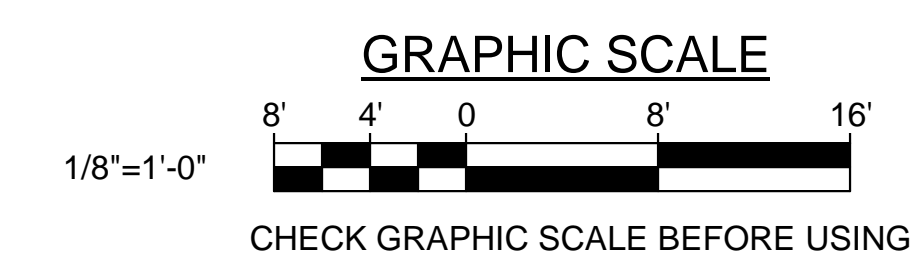
**REMOVALS KEYNOTES: (THIS SHEET ONLY)**

- 1 REMOVE EXISTING 1"± DIAGONAL WOOD SHEATHING.
- 2 REMOVE EXISTING WOOD CROSS BRIDGING.
- 3 REMOVE EXISTING 4x10± WOOD JOISTS AT 1'-4"± ON-CENTER.
- 4 REMOVE EXISTING 2x14± WOOD JOISTS AT 1'-4"± ON-CENTER.
- 5 REMOVE EXISTING 2x12± WOOD JOISTS AT 1'-4"± ON-CENTER.
- 6 REMOVE EXISTING 2x10± WOOD JOISTS AT 1'-4"± ON-CENTER.
- 7 REMOVE EXISTING 2x8± WOOD JOISTS AT 1'-4"± ON-CENTER.
- 8 REMOVE EXISTING 2x10± WOOD JOISTS AT 1'-0"± ON-CENTER.
- 9 REMOVE EXISTING (2) 2x14± WOOD HEADER.
- 10 REMOVE EXISTING (2) 2x12± WOOD HEADER.
- 11 REMOVE EXISTING (2) 2x10± WOOD HEADER.
- 12 REMOVE EXISTING (2) 2x8± WOOD HEADER.
- 13 REMOVE EXISTING 18WF55± STEEL BEAM.
- 14 REMOVE EXISTING 18WF50± STEEL BEAM.
- 15 REMOVE EXISTING 3-1/2"± DIAMETER STEEL COLUMN.



**KEYPLAN**  
NOT TO SCALE

**1 ROOF FRAMING REMOVALS PLAN PART B**  
SD111 SCALE: 1/8" = 1'-0"  
PLAN NORTH



		<b>STATE OF MAINE</b> <b>PUBLIC SCHOOL PROJECT</b>	
		TITLE: PORTLAND PUBLIC SCHOOLS NEW FRED P. HALL ELEMENTARY SCHOOL LOCATION: 23 ORONO ROAD, PORTLAND, ME TITLE THIS DWG.: ROOF FRAMING REMOVALS PLAN PART B - PHASE 2B	
DRAWN BY: MJC CHECK BY: DNM	OAK POINT ASSOCIATES ARCHITECTS	DRAWING NO. <b>SD111</b>	SHEET NO. <b>80</b> OF 312
NO. DATE DESCRIPTION BY NO. DATE REVISIONS	DATE: 03/17/17	231 Main Street, Biddeford, Maine 04005	207.283.9192