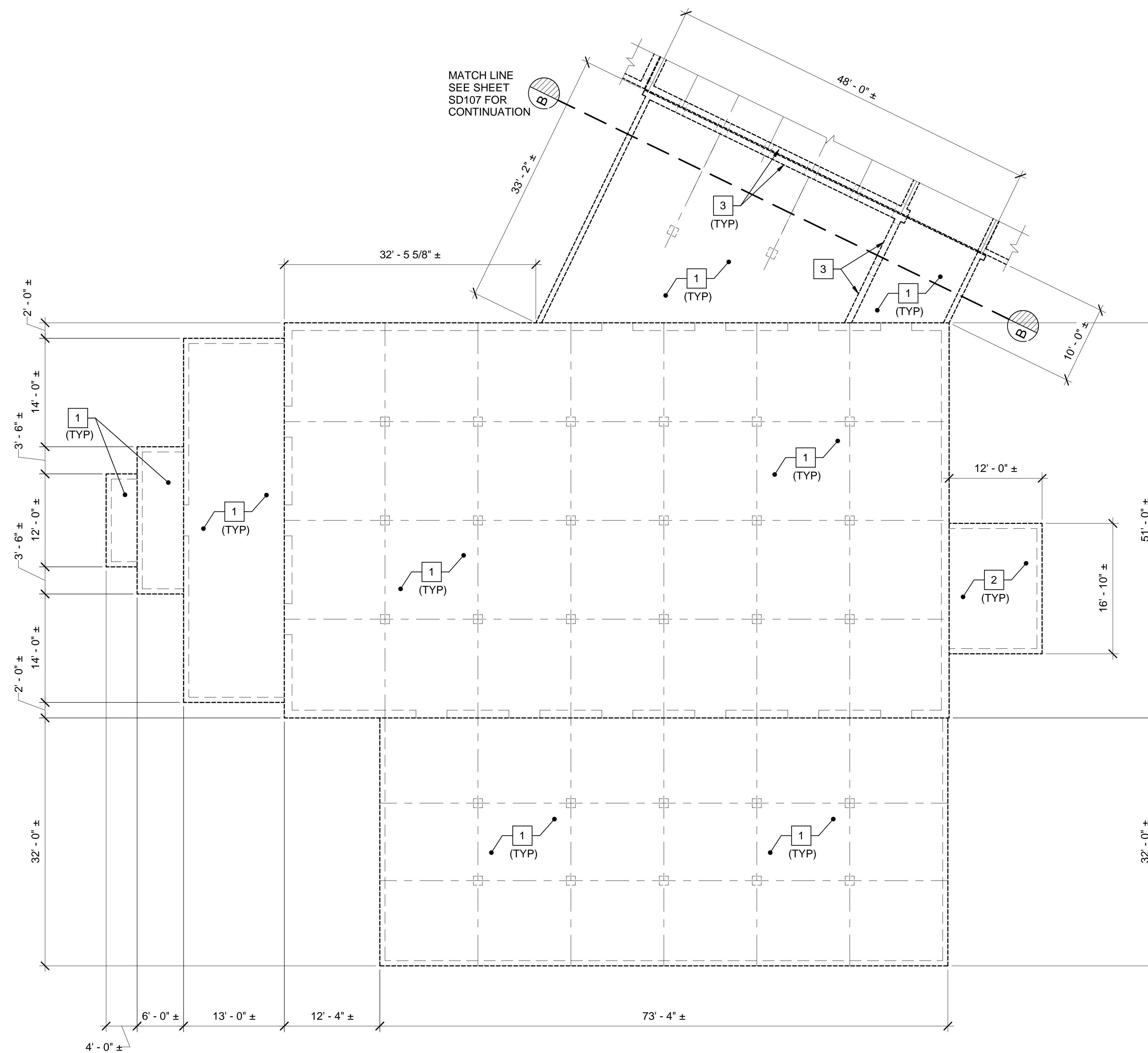


**DRAWING NOTE:**

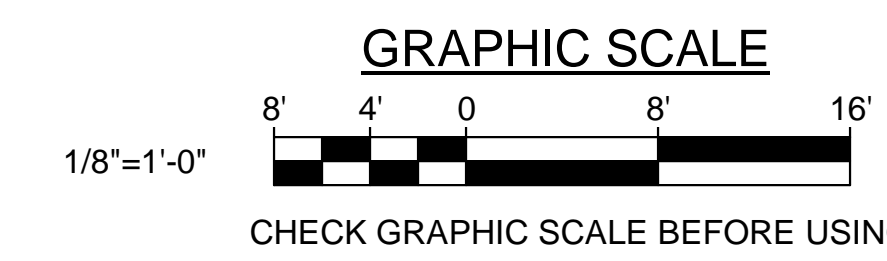
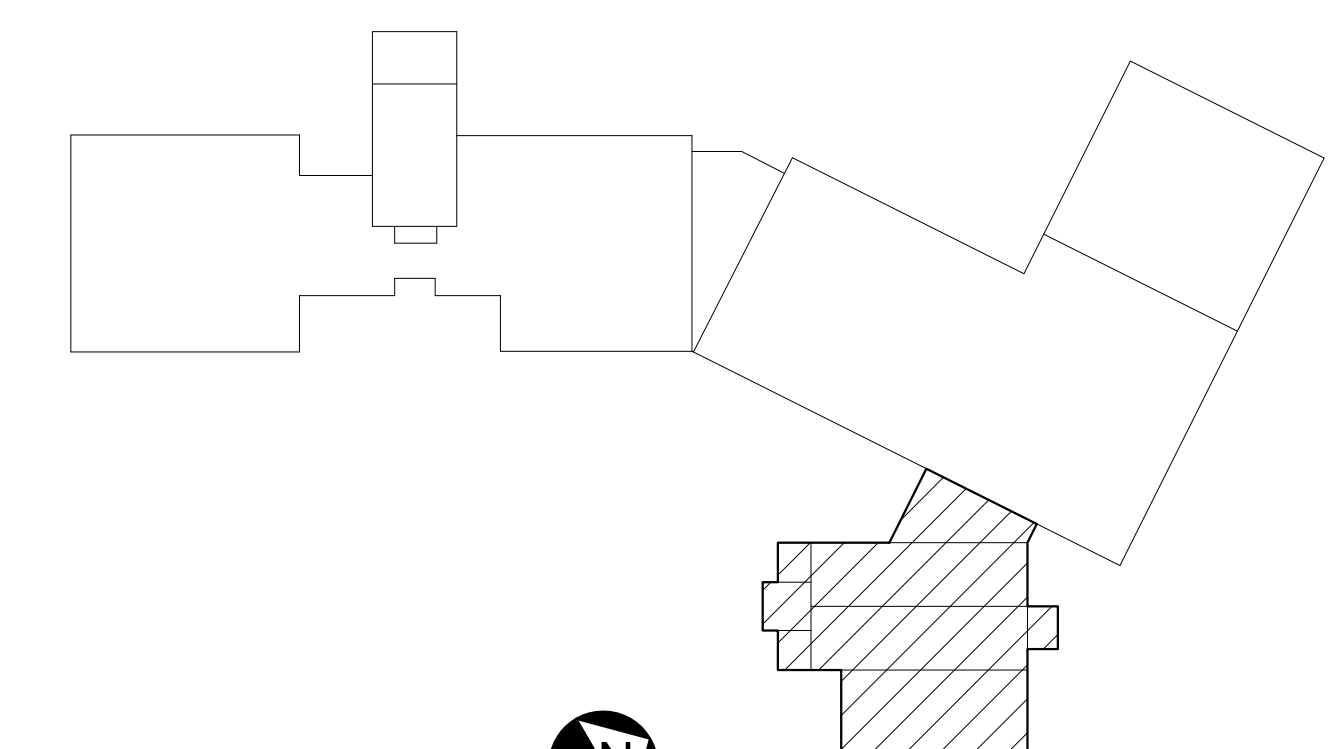
REFER TO SHEET SD104 FOR SIZES OF EXISTING REINFORCED CONCRETE PIERS AND FOUNDATION WALLS TO BE REMOVED.

**REMOVALS KEYNOTES: (THIS SHEET ONLY)**

- 1 SAWCUT AND REMOVE EXISTING 6"± REINFORCED CONCRETE ELEVATED SLAB WITH REINFORCING STEEL TOP AND BOTTOM EACH WAY.
- 2 SAWCUT AND REMOVE EXISTING 6"± REINFORCED CONCRETE SLAB-ON-GRADE.
- 3 SAWCUT AND REMOVE EXISTING 10"± x 1'-2"± REINFORCED CONCRETE BEAM.



**1 FIRST FLOOR FRAMING REMOVALS PLAN PART D**  
 SD108 SCALE: 1/8" = 1'-0" PLAN NORTH



|                                |                |  |
|--------------------------------|----------------|--|
|                                |                | STATE OF MAINE<br><b>PUBLIC SCHOOL PROJECT</b><br>TITLE: PORTLAND PUBLIC SCHOOLS<br>NEW FRED P. HALL ELEMENTARY SCHOOL<br>LOCATION: 23 ORONO ROAD, PORTLAND, ME<br>TITLE THIS DWG:<br>FIRST FLOOR FRAMING REMOVALS PLAN<br>PART D - PHASE 2B |
| DRAWN BY: MJC<br>CHECK BY: DNM | DATE: 03/17/17 | OAK POINT ASSOCIATES<br>DRAWING NO. SD108<br>SHEET NO. 77 OF 312   |
| NO. DATE DESCRIPTION BY        | REVISIONS      | 231 Main Street, Biddeford, Maine 04005 207.283.9192   |