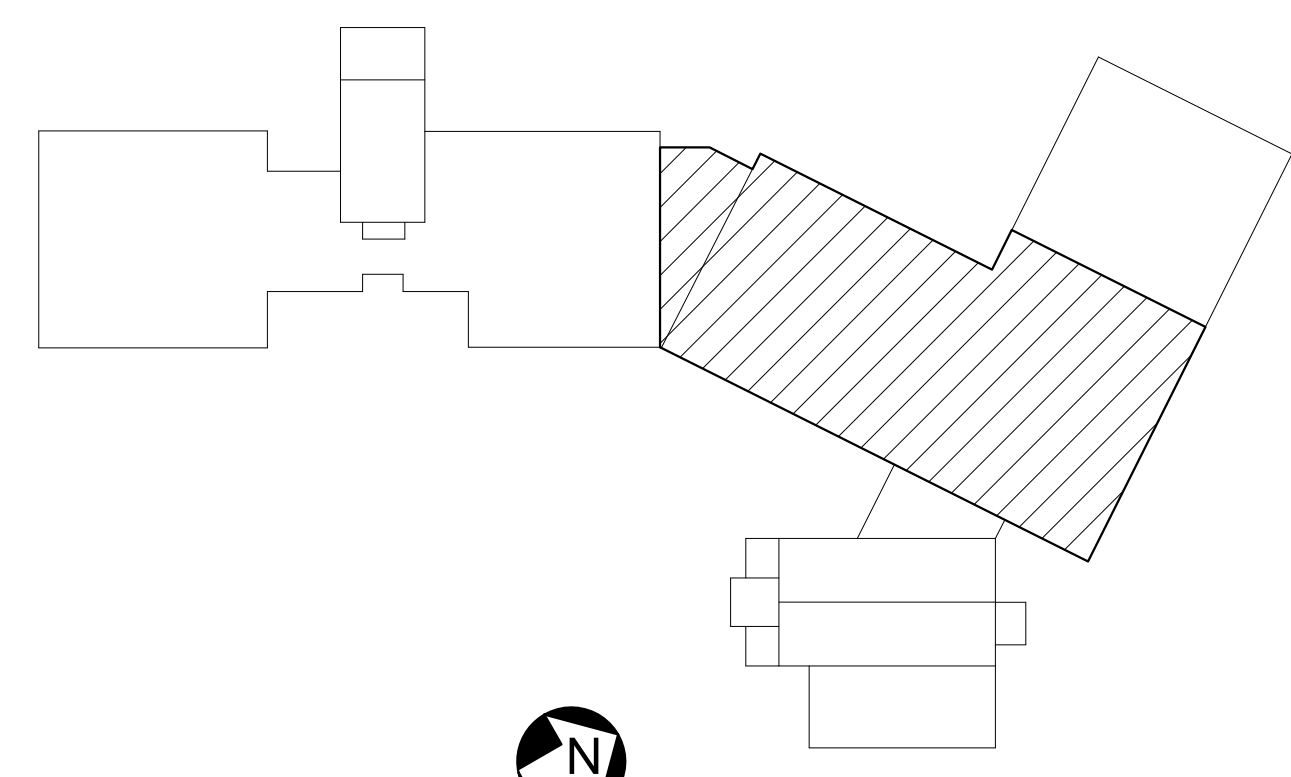


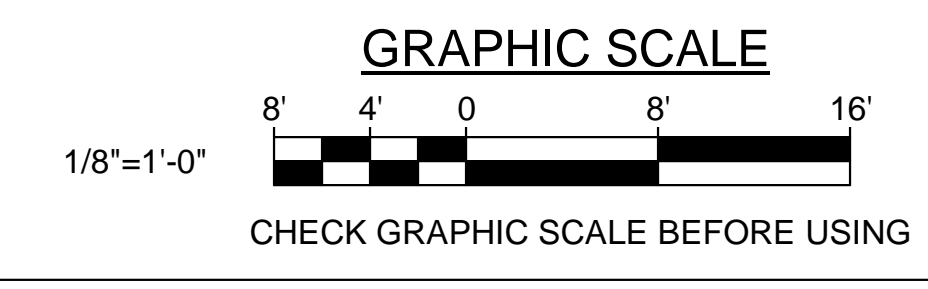


DRAWING NOTE:
 REFER TO SHEET SD103 FOR SIZES OF EXISTING REINFORCED CONCRETE PIERS AND FOUNDATION WALLS TO BE REMOVED.

- REMOVALS KEYNOTES:** (THIS SHEET ONLY)
- 1 SAWCUT AND REMOVE EXISTING 6"± REINFORCED CONCRETE ELEVATED SLAB WITH REINFORCING STEEL TOP AND BOTTOM EACH WAY.
 - 2 SAWCUT AND REMOVE EXISTING 10"± x 1'-2"± REINFORCED CONCRETE BEAM.



1 FIRST FLOOR FRAMING REMOVALS PLAN PART B
 SD107 SCALE: 1/8" = 1'-0"



STATE OF MAINE PUBLIC SCHOOL PROJECT	
TITLE: PORTLAND PUBLIC SCHOOLS NEW FRED P. HALL ELEMENTARY SCHOOL	
LOCATION: 23 ORONO ROAD, PORTLAND, ME	
TITLE THIS DWG.: FIRST FLOOR FRAMING REMOVALS PLAN PART B - PHASE 2B	
DRAWN BY: MJC	CHECKED BY: DNM
DATE: 03/17/17	DATE: 03/17/17
NO.	DESCRIPTION