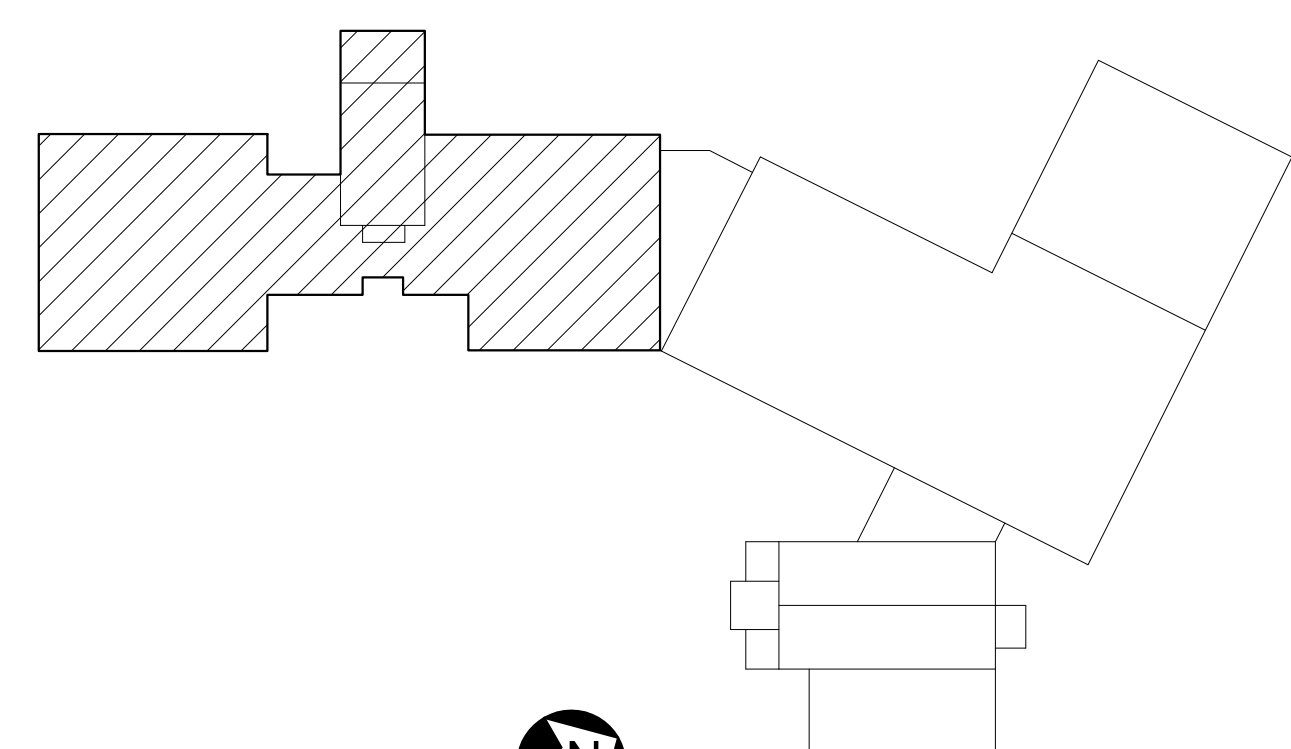


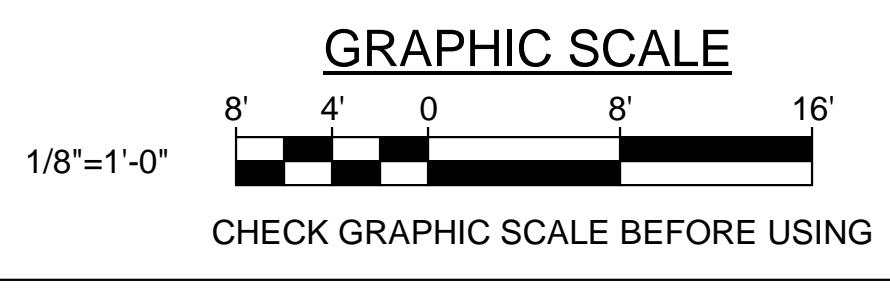
DRAWING NOTE:
 REFER TO SHEET SD102 FOR SIZES OF EXISTING REINFORCED CONCRETE PIERS AND FOUNDATION WALLS TO BE REMOVED.

- REMOVALS KEYNOTES: (THIS SHEET ONLY)**
- 1 SAWCUT AND REMOVE EXISTING 6"± REINFORCED CONCRETE ELEVATED SLAB WITH REINFORCING STEEL TOP AND BOTTOM EACH WAY.
 - 2 SAWCUT AND REMOVE EXISTING 5"± REINFORCED CONCRETE ELEVATED SLAB WITH REINFORCING STEEL TOP AND BOTTOM EACH WAY.
 - 3 SAWCUT AND REMOVE EXISTING 10"± x 1'-2"± REINFORCED CONCRETE BEAM.
 - 4 REMOVE EXISTING OIL TANK AND CONCRETE SLAB. REFER TO SHEET CD101.



1 FIRST FLOOR FRAMING REMOVALS PLAN PART A
 SD106 SCALE: 1/8" = 1'-0"

PLAN NORTH



		STATE OF MAINE PUBLIC SCHOOL PROJECT TITLE: PORTLAND PUBLIC SCHOOLS NEW FRED P. HALL ELEMENTARY SCHOOL LOCATION: 23 ORONO ROAD, PORTLAND, ME TITLE THIS DWG: FIRST FLOOR FRAMING REMOVALS PLAN PART A - PHASE 2B
DRAWN BY: MJC CHECK BY: DNM	DATE: 03/17/17	OAK POINT ASSOCIATES DRAWING NO. SD106 SHEET NO. 75 OF 312