

DRAWING NOTE:

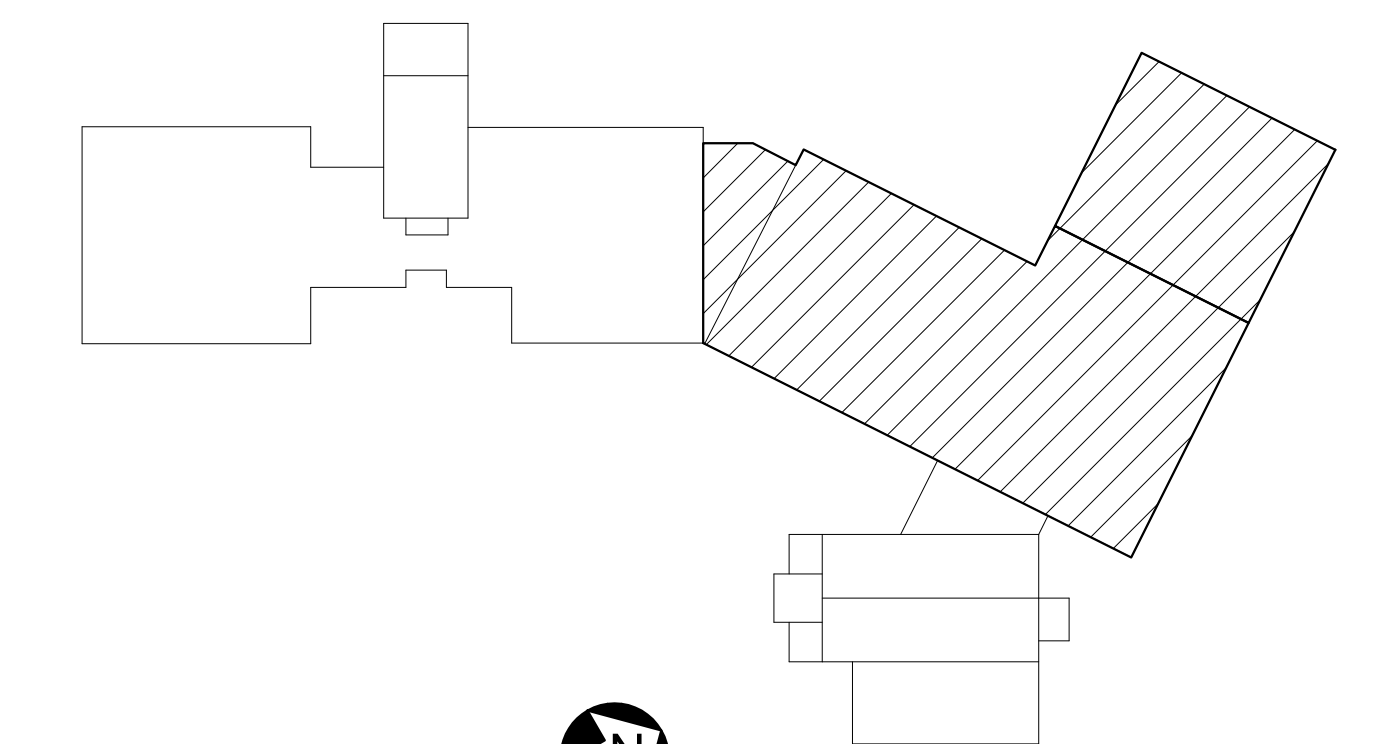
REFER TO SHEET SD101 FOR SIZES OF EXISTING REINFORCED CONCRETE PIERS AND FOUNDATION WALLS TO BE REMOVED.

EXISTING KEYNOTES: (THIS SHEET ONLY)

- A EXISTING 6"± REINFORCED CONCRETE ELEVATED SLAB WITH REINFORCING STEEL TOP AND BOTTOM EACH WAY.
- B EXISTING 10"± x 1'-2"± REINFORCED CONCRETE BEAM.

REMOVALS KEYNOTES: (THIS SHEET ONLY)

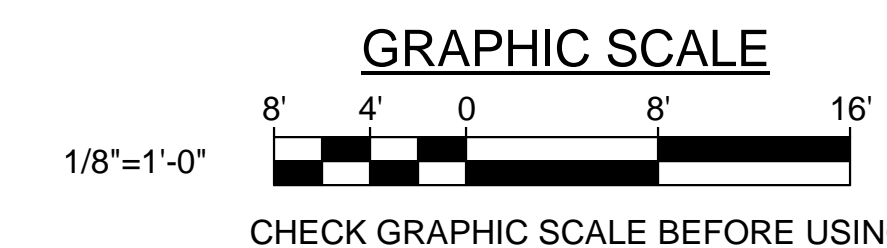
- 1 SAWCUT AND REMOVE EXISTING 6"± REINFORCED CONCRETE ELEVATED SLAB WITH REINFORCING STEEL TOP AND BOTTOM EACH WAY.
- 2 SAWCUT AND REMOVE EXISTING 10"± x 1'-2"± REINFORCED CONCRETE BEAM.



KEYPLAN
NOT TO SCALE

PLAN NORTH

1 FIRST FLOOR FRAMING REMOVALS PLAN PART C - PHASE 1B
SCALE: 1/8" = 1'-0"



CHECK GRAPHIC SCALE BEFORE USING

		STATE OF MAINE PUBLIC SCHOOL PROJECT TITLE: PORTLAND PUBLIC SCHOOLS NEW FRED P. HALL ELEMENTARY SCHOOL LOCATION: 23 ORONO ROAD, PORTLAND, ME TITLE THIS DWG.: FIRST FLOOR FRAMING REMOVALS PLAN PART C - PHASE 1C	
DRAWN BY: MJC CHECK BY: DNM	DATE: 03/17/17	DRAWING NO.: SD105	SHEET NO.: 74 OF 312
OAK POINT ASSOCIATES 231 Main Street, Biddeford, Maine 04005		207.283.9192	