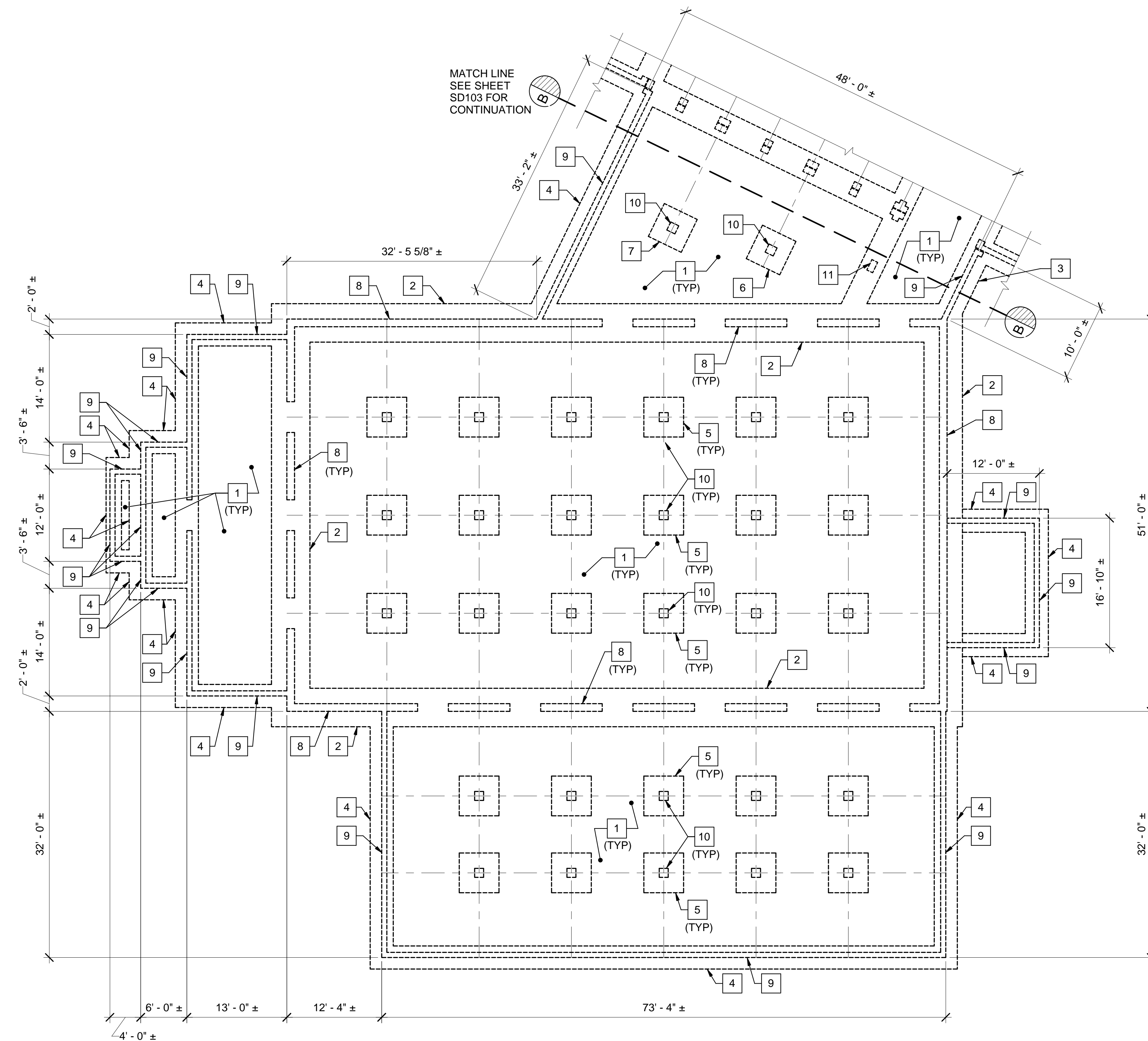
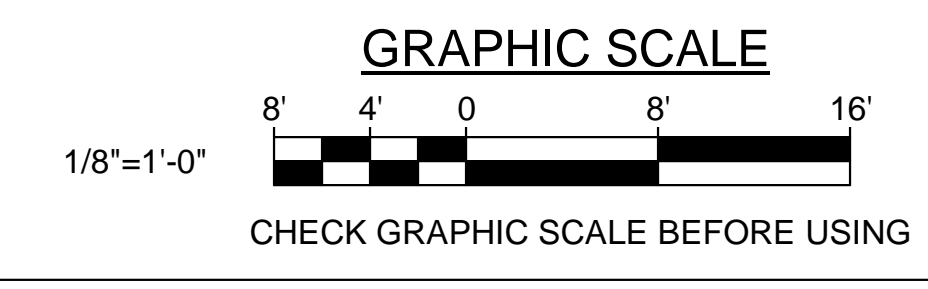
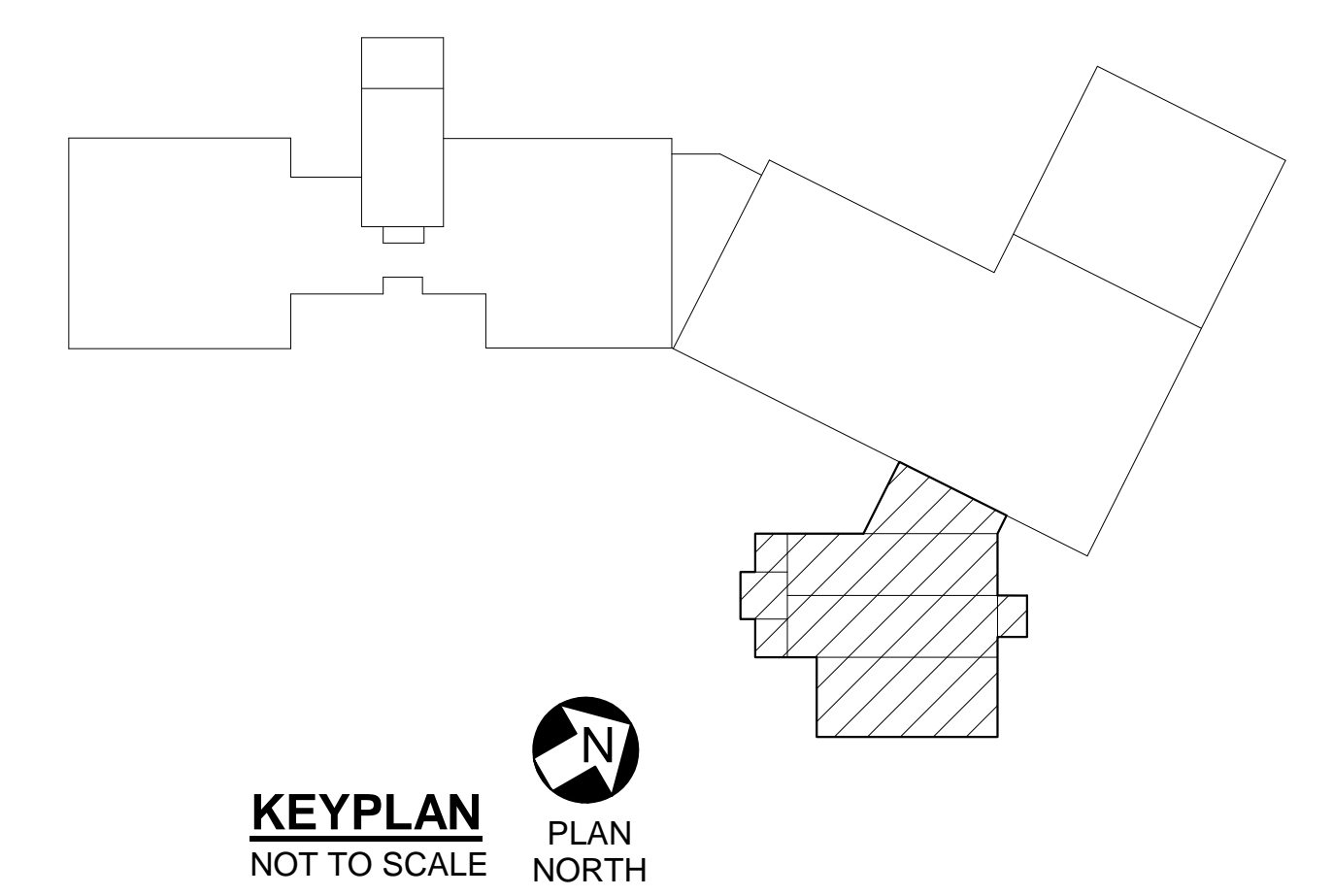


REMOVALS KEYNOTES: (THIS SHEET ONLY)

- 1 SAWCUT AND REMOVE EXISTING 2"± CONCRETE SLAB-ON-GRADE.
- 2 SAWCUT AND REMOVE EXISTING CONTINUOUS 5'-0"± WIDE x 1'-0"± DEEP REINFORCED CONCRETE FOOTING.
- 3 SAWCUT AND REMOVE EXISTING CONTINUOUS 3'-4"± WIDE x 8"± DEEP REINFORCED CONCRETE FOOTING.
- 4 SAWCUT AND REMOVE EXISTING CONTINUOUS 3'-0"± WIDE x 8"± DEEP REINFORCED CONCRETE FOOTING.
- 5 SAWCUT AND REMOVE EXISTING 5'-2"± x 5'-2"± x 8"± DEEP REINFORCED CONCRETE SPREAD FOOTING
- 6 SAWCUT AND REMOVE EXISTING 4'-10"± x 4'-10"± x 8"± DEEP REINFORCED CONCRETE SPREAD FOOTING.
- 7 SAWCUT AND REMOVE EXISTING 4'-9"± x 4'-9"± x 8"± DEEP REINFORCED CONCRETE SPREAD FOOTING.
- 8 SAWCUT AND REMOVE EXISTING 1'-0"± REINFORCED CONCRETE FOUNDATION WALL.
- 9 SAWCUT AND REMOVE EXISTING 8"± REINFORCED CONCRETE FOUNDATION WALL.
- 10 SAWCUT AND REMOVE EXISTING 1'-2"± x 1'-2"± REINFORCED CONCRETE PIER.
- 11 SAWCUT AND REMOVE EXISTING 1'-6"± x 10"± REINFORCED CONCRETE PIER.



1 FOUNDATION REMOVALS PLAN PART D
 SD104 SCALE: 1/8" = 1'-0"
 PLAN NORTH



		STATE OF MAINE PUBLIC SCHOOL PROJECT	
		TITLE: PORTLAND PUBLIC SCHOOLS NEW FRED P. HALL ELEMENTARY SCHOOL LOCATION: 23 ORONO ROAD, PORTLAND, ME TITLE THIS DWG.: FOUNDATION REMOVALS PLAN PART D - PHASE 2B	
DRAWN BY: MJC CHECK BY: DNM	DATE: 03/17/17	DRAWING NO.: SD104	SHEET NO.: 73 OF 312
NO. DATE DESCRIPTION BY		REVISIONS	