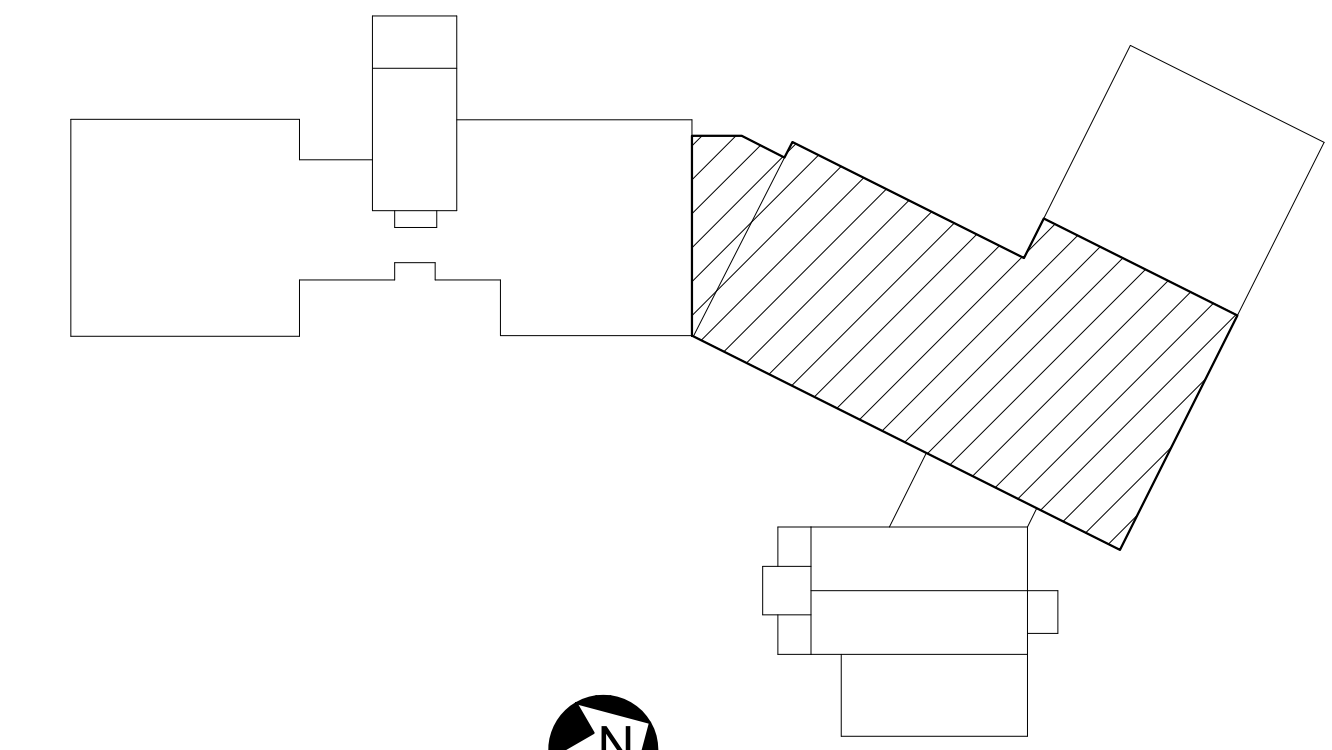


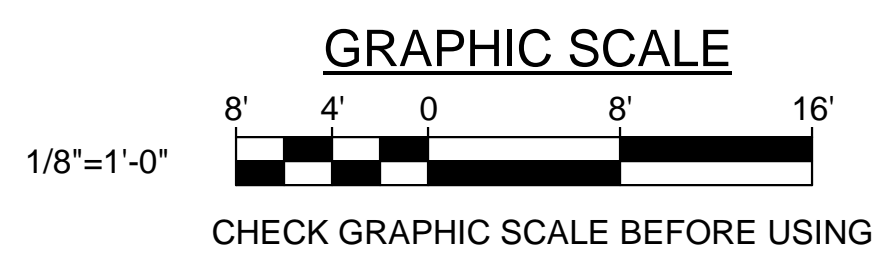
REMOVALS KEYNOTES: (THIS SHEET ONLY)

- 1 SAWCUT AND REMOVE EXISTING 2"± CONCRETE SLAB-ON-GRADE.
- 2 SAWCUT AND REMOVE EXISTING CONTINUOUS 3'-8"± WIDE x 8"± DEEP REINFORCED CONCRETE FOOTING.
- 3 SAWCUT AND REMOVE EXISTING CONTINUOUS 3'-4"± WIDE x 8"± DEEP REINFORCED CONCRETE FOOTING.
- 4 SAWCUT AND REMOVE EXISTING CONTINUOUS 3'-0"± WIDE x 8"± DEEP REINFORCED CONCRETE FOOTING.
- 5 SAWCUT AND REMOVE EXISTING 4'-10"± x 4'-10"± x 8"± DEEP REINFORCED CONCRETE SPREAD FOOTING.
- 6 SAWCUT AND REMOVE EXISTING 4'-9"± x 4'-9"± x 8"± DEEP REINFORCED CONCRETE SPREAD FOOTING.
- 7 SAWCUT AND REMOVE EXISTING 8"± REINFORCED CONCRETE FOUNDATION WALL.
- 8 SAWCUT AND REMOVE EXISTING 1'-2"± x 1'-2"± REINFORCED CONCRETE PIER.
- 9 SAWCUT AND REMOVE EXISTING 10"± x 6"± REINFORCED CONCRETE PIER.
- 10 SAWCUT AND REMOVE EXISTING 1'-0"± x 10"± REINFORCED CONCRETE PIER.
- 11 SAWCUT AND REMOVE EXISTING 1'-6"± x 10"± REINFORCED CONCRETE PIER.
- 12 SAWCUT AND REMOVE EXISTING 1'-10"± x 1'-4"± T-SHAPED REINFORCED CONCRETE PIER.
- 13 SAWCUT AND REMOVE EXISTING 1'-4"± x 1'-4"± L-SHAPED REINFORCED CONCRETE PIER.

1 FOUNDATION REMOVALS PLAN PART B
 SD103 SCALE: 1/8" = 1'-0"
 PLAN NORTH



KEYPLAN
 NOT TO SCALE
 PLAN NORTH



STATE OF MAINE PUBLIC SCHOOL PROJECT TITLE: PORTLAND PUBLIC SCHOOLS NEW FRED P. HALL ELEMENTARY SCHOOL LOCATION: 23 ORONO ROAD, PORTLAND, ME TITLE THIS DWG.: FOUNDATION REMOVALS PLAN PART B - PHASE 2B		DRAWING NO. SD103 SHEET NO.
OAK POINT ASSOCIATES	231 Main Street, Biddeford, Maine 04005 207.283.9192	72 OF 312