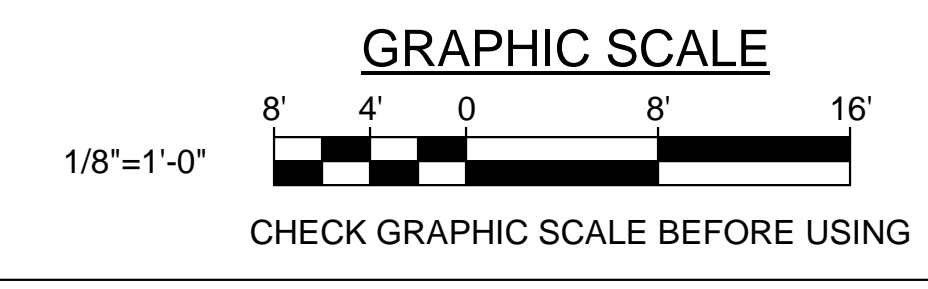
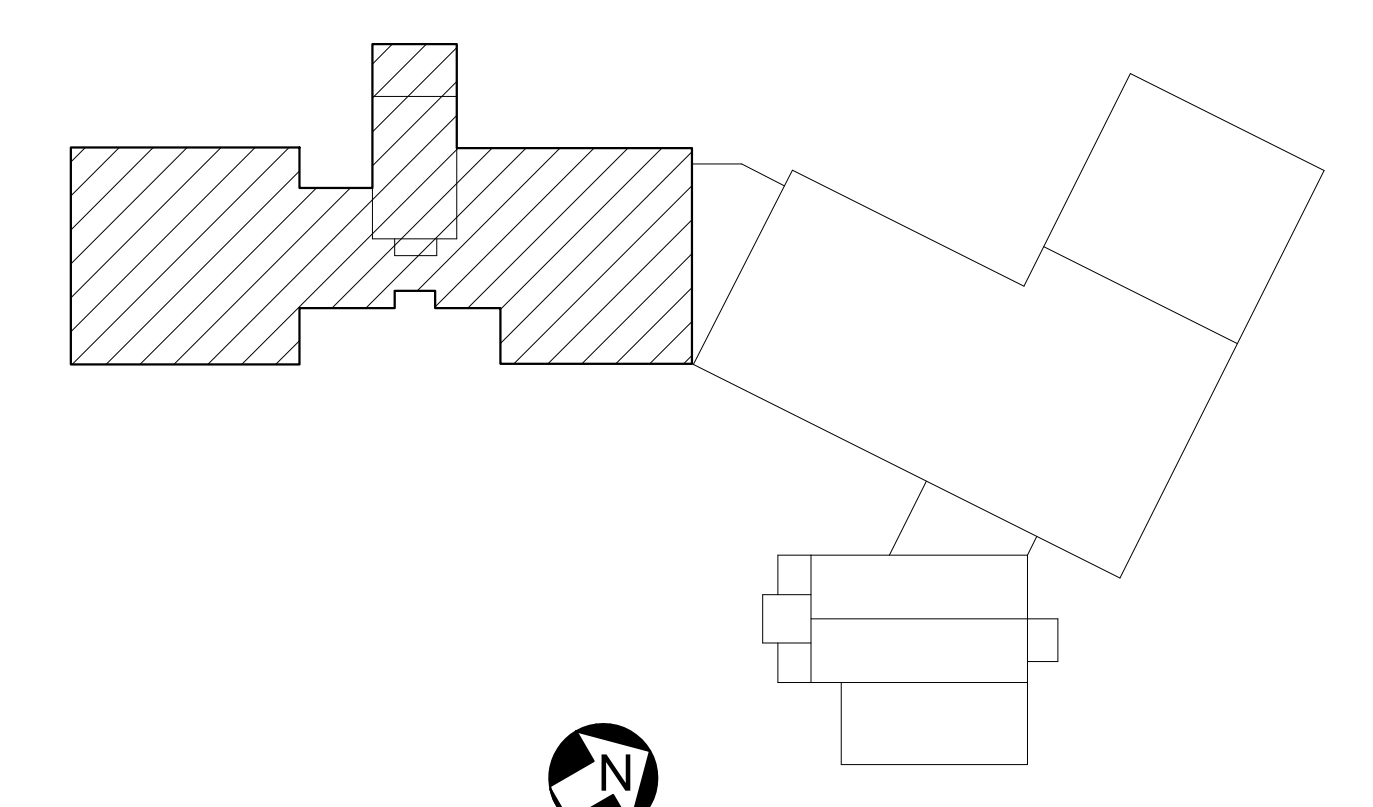


- REMOVALS KEYNOTES: (THIS SHEET ONLY)**
- 1 SAWCUT AND REMOVE EXISTING 10"± CONCRETE SLAB-ON-GRADE.
 - 2 SAWCUT AND REMOVE EXISTING 2"± CONCRETE SLAB-ON-GRADE.
 - 3 SAWCUT AND REMOVE EXISTING CONTINUOUS 4'-6"± WIDE x 8"± DEEP REINFORCED CONCRETE FOOTING.
 - 4 SAWCUT AND REMOVE EXISTING CONTINUOUS 4'-0"± WIDE x 8"± DEEP REINFORCED CONCRETE FOOTING.
 - 5 SAWCUT AND REMOVE EXISTING CONTINUOUS 3'-10"± WIDE x 8"± DEEP REINFORCED CONCRETE FOOTING.
 - 6 SAWCUT AND REMOVE EXISTING CONTINUOUS 3'-9"± WIDE x 8"± DEEP REINFORCED CONCRETE FOOTING.
 - 7 SAWCUT AND REMOVE EXISTING CONTINUOUS 3'-8"± WIDE x 8"± DEEP REINFORCED CONCRETE FOOTING.
 - 8 SAWCUT AND REMOVE EXISTING CONTINUOUS 3'-6"± WIDE x 8"± DEEP REINFORCED CONCRETE FOOTING.
 - 9 SAWCUT AND REMOVE EXISTING CONTINUOUS 3'-4"± WIDE x 8"± DEEP REINFORCED CONCRETE FOOTING.
 - 10 SAWCUT AND REMOVE EXISTING CONTINUOUS 3'-0"± WIDE x 8"± DEEP REINFORCED CONCRETE FOOTING.
 - 11 SAWCUT AND REMOVE EXISTING 5'-2"± x 5'-2"± x 8"± DEEP REINFORCED CONCRETE SPREAD FOOTING.
 - 12 SAWCUT AND REMOVE EXISTING 4'-10"± x 4'-10"± x 8"± DEEP REINFORCED CONCRETE SPREAD FOOTING.
 - 13 SAWCUT AND REMOVE EXISTING 4'-9"± x 4'-9"± x 8"± DEEP REINFORCED CONCRETE SPREAD FOOTING.
 - 14 SAWCUT AND REMOVE EXISTING 4'-6"± x 4'-6"± x 8"± DEEP REINFORCED CONCRETE SPREAD FOOTING.
 - 15 SAWCUT AND REMOVE EXISTING 4'-0"± x 4'-0"± x 8"± DEEP REINFORCED CONCRETE SPREAD FOOTING.
 - 16 SAWCUT AND REMOVE EXISTING 3'-9"± x 3'-9"± x 8"± DEEP REINFORCED CONCRETE SPREAD FOOTING.
 - 17 SAWCUT AND REMOVE EXISTING 10"± REINFORCED CONCRETE FOUNDATION WALL.
 - 18 SAWCUT AND REMOVE EXISTING 8"± REINFORCED CONCRETE FOUNDATION WALL.
 - 19 SAWCUT AND REMOVE EXISTING 6"± REINFORCED CONCRETE FOUNDATION WALL.
 - 20 SAWCUT AND REMOVE EXISTING 1'-2"± x 1'-2"± REINFORCED CONCRETE PIER.
 - 21 SAWCUT AND REMOVE EXISTING 10"± x 6"± REINFORCED CONCRETE PIER.
 - 22 SAWCUT AND REMOVE EXISTING 1'-0"± x 10"± REINFORCED CONCRETE PIER.
 - 23 SAWCUT AND REMOVE EXISTING 1'-6"± x 10"± REINFORCED CONCRETE PIER.
 - 24 SAWCUT AND REMOVE EXISTING 1'-10"± x 1'-4"± T-SHAPED REINFORCED CONCRETE PIER.
 - 25 SAWCUT AND REMOVE EXISTING 1'-4"± x 1'-4"± L-SHAPED REINFORCED CONCRETE PIER.
 - 26 SAWCUT AND REMOVE EXISTING 1'-0"± x 10"± REINFORCED CONCRETE PIER.
 - 27 SAWCUT AND REMOVE EXISTING CONTINUOUS 1'-0"± WIDE x 8"± DEEP REINFORCED CONCRETE FOOTING.
 - 28 REMOVE EXISTING OIL TANK AND CONCRETE SLAB. REFER TO SHEET CD101.

1 FOUNDATION REMOVALS PLAN PART A
 SD102/ SCALE: 1/8" = 1'-0"
 PLAN NORTH

MATCH LINE
 SEE SHEET
 SD103 FOR
 CONTINUATION

MATCH LINE
 SEE SHEET
 SD103 FOR
 CONTINUATION



STATE OF MAINE PUBLIC SCHOOL PROJECT TITLE: PORTLAND PUBLIC SCHOOLS NEW FRED P. HALL ELEMENTARY SCHOOL LOCATION: 23 ORONO ROAD, PORTLAND, ME TITLE THIS DWG: FOUNDATION REMOVALS PLAN PART A - PHASE 2B		DRAWING NO. SD102 SHEET NO. 71 OF 312
DRAWN BY: MJC CHECK BY: DNM DATE: 03/17/17	OAK POINT ASSOCIATES 207.283.9192	207.283.9192