

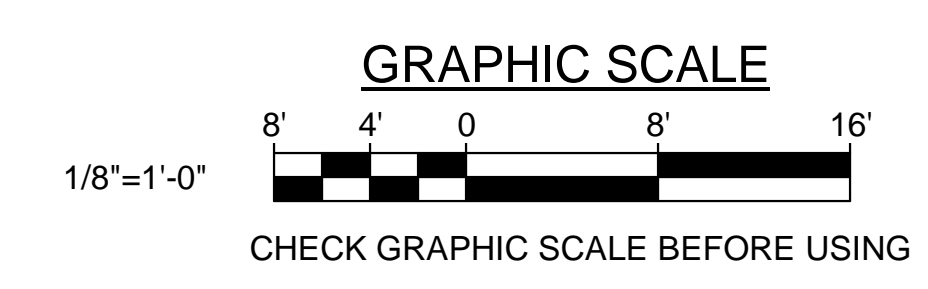
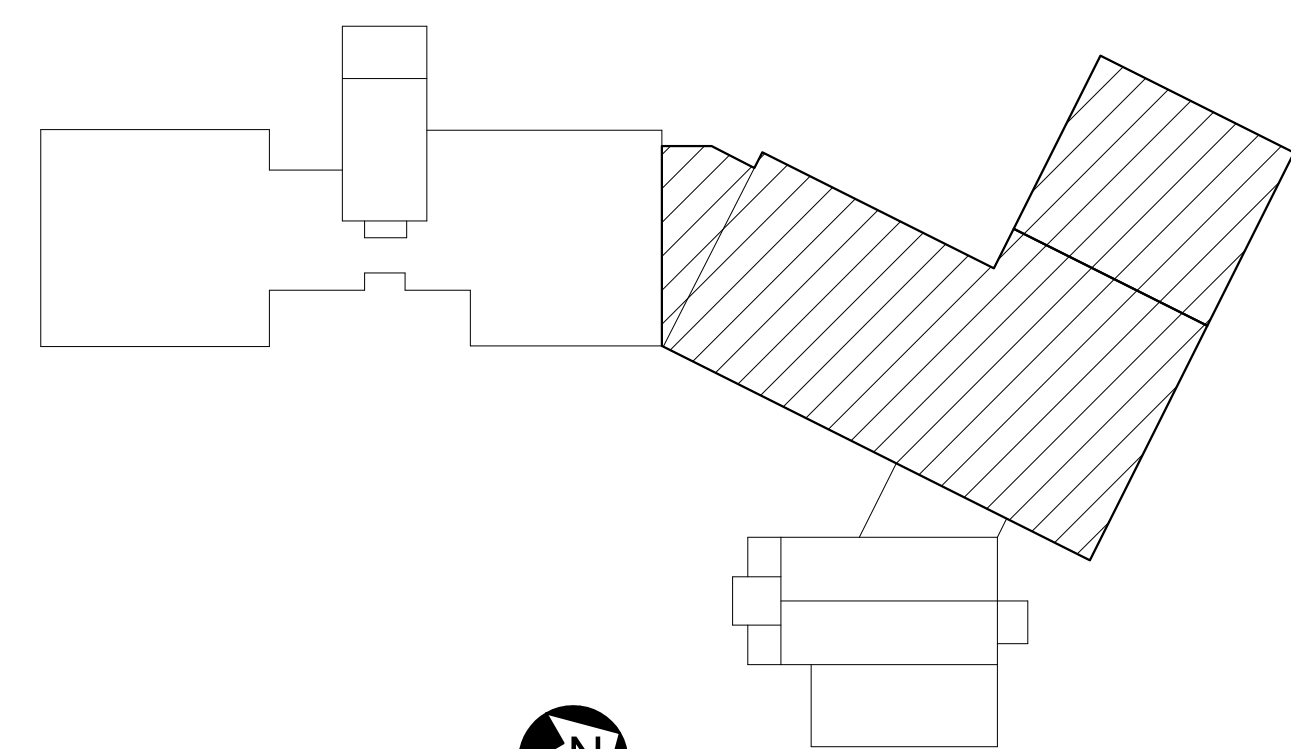
**EXISTING KEYNOTES:** (THIS SHEET ONLY)

- A EXISTING 2"± CONCRETE SLAB-ON-GRADE.
- B EXISTING CONTINUOUS 3'-8"± WIDE x 8"± DEEP REINFORCED CONCRETE FOOTING.
- C EXISTING CONTINUOUS 3'-4"± WIDE x 8"± DEEP REINFORCED CONCRETE FOOTING.
- D EXISTING CONTINUOUS 3'-0"± WIDE x 8"± DEEP REINFORCED CONCRETE FOOTING.
- E EXISTING 4'-10"± x 4'-10"± x 8"± DEEP REINFORCED CONCRETE SPREAD FOOTING.
- F EXISTING 4'-9"± x 4'-9"± x 8"± DEEP REINFORCED CONCRETE SPREAD FOOTING.
- G EXISTING 8"± REINFORCED CONCRETE FOUNDATION WALL.
- H EXISTING 1'-2"± x 1'-2"± REINFORCED CONCRETE PIER.
- J EXISTING 10"± x 6"± REINFORCED CONCRETE PIER.
- K EXISTING 1'-0"± x 10"± REINFORCED CONCRETE PIER.
- L EXISTING 1'-6"± x 10"± REINFORCED CONCRETE PIER.
- M EXISTING 1'-10"± x 1'-4"± T-SHAPED REINFORCED CONCRETE PIER.
- N EXISTING 1'-4"± x 1'-4"± L-SHAPED REINFORCED CONCRETE PIER.

**REMOVALS KEYNOTES:** (THIS SHEET ONLY)

- 1 SAWCUT AND REMOVE EXISTING 2"± CONCRETE SLAB-ON-GRADE.
- 2 SAWCUT AND REMOVE EXISTING CONTINUOUS 3'-4"± WIDE x 8"± DEEP REINFORCED CONCRETE FOOTING.
- 3 SAWCUT AND REMOVE EXISTING CONTINUOUS 3'-0"± WIDE x 8"± DEEP REINFORCED CONCRETE FOOTING.
- 4 SAWCUT AND REMOVE EXISTING 4'-10"± x 4'-10"± x 8"± DEEP REINFORCED CONCRETE SPREAD FOOTING.
- 5 SAWCUT AND REMOVE EXISTING 4'-9"± x 4'-9"± x 8"± DEEP REINFORCED CONCRETE SPREAD FOOTING.
- 6 SAWCUT AND REMOVE EXISTING 8"± REINFORCED CONCRETE FOUNDATION WALL.
- 7 SAWCUT AND REMOVE EXISTING 1'-2"± x 1'-2"± REINFORCED CONCRETE PIER.
- 8 SAWCUT AND REMOVE EXISTING 10"± x 6"± REINFORCED CONCRETE PIER.
- 9 SAWCUT AND REMOVE EXISTING 1'-0"± x 10"± REINFORCED CONCRETE PIER.
- 10 SAWCUT AND REMOVE EXISTING 1'-6"± x 10"± REINFORCED CONCRETE PIER.
- 11 SAWCUT AND REMOVE EXISTING 1'-10"± x 1'-4"± T-SHAPED REINFORCED CONCRETE PIER.
- 12 SAWCUT AND REMOVE PORTION OF EXISTING 10"± x 6"± REINFORCED CONCRETE PIER.
- 13 SAWCUT AND REMOVE PORTION OF EXISTING 1'-0"± x 10"± REINFORCED CONCRETE PIER.
- 14 SAWCUT AND REMOVE PORTION OF EXISTING 1'-6"± x 10"± REINFORCED CONCRETE PIER.
- 15 SAWCUT AND REMOVE PORTION OF EXISTING 1'-4"± x 1'-4"± L-SHAPED REINFORCED CONCRETE PIER.

**1 FOUNDATION REMOVALS PLAN PART C - PHASE 1B**  
SD101 SCALE: 1/8" = 1'-0"  
PLAN NORTH



		<b>STATE OF MAINE</b> <b>PUBLIC SCHOOL PROJECT</b>	
		TITLE: PORTLAND PUBLIC SCHOOLS NEW FRED P. HALL ELEMENTARY SCHOOL LOCATION: 23 ORONO ROAD, PORTLAND, ME TITLE THIS DWS: FOUNDATION REMOVALS PLAN PART C - PHASE 1C	
DRAWN BY: JEG CHECK BY: DNM	OAK POINT ASSOCIATES 231 Main Street, Biddeford, Maine 04005 207.283.9181	DRAWING NO. <b>SD101</b>	SHEET NO. <b>70</b> OF 312
NO. DATE DESCRIPTION REVISIONS	BY NO. DATE 03/17/17	207.283.9181	