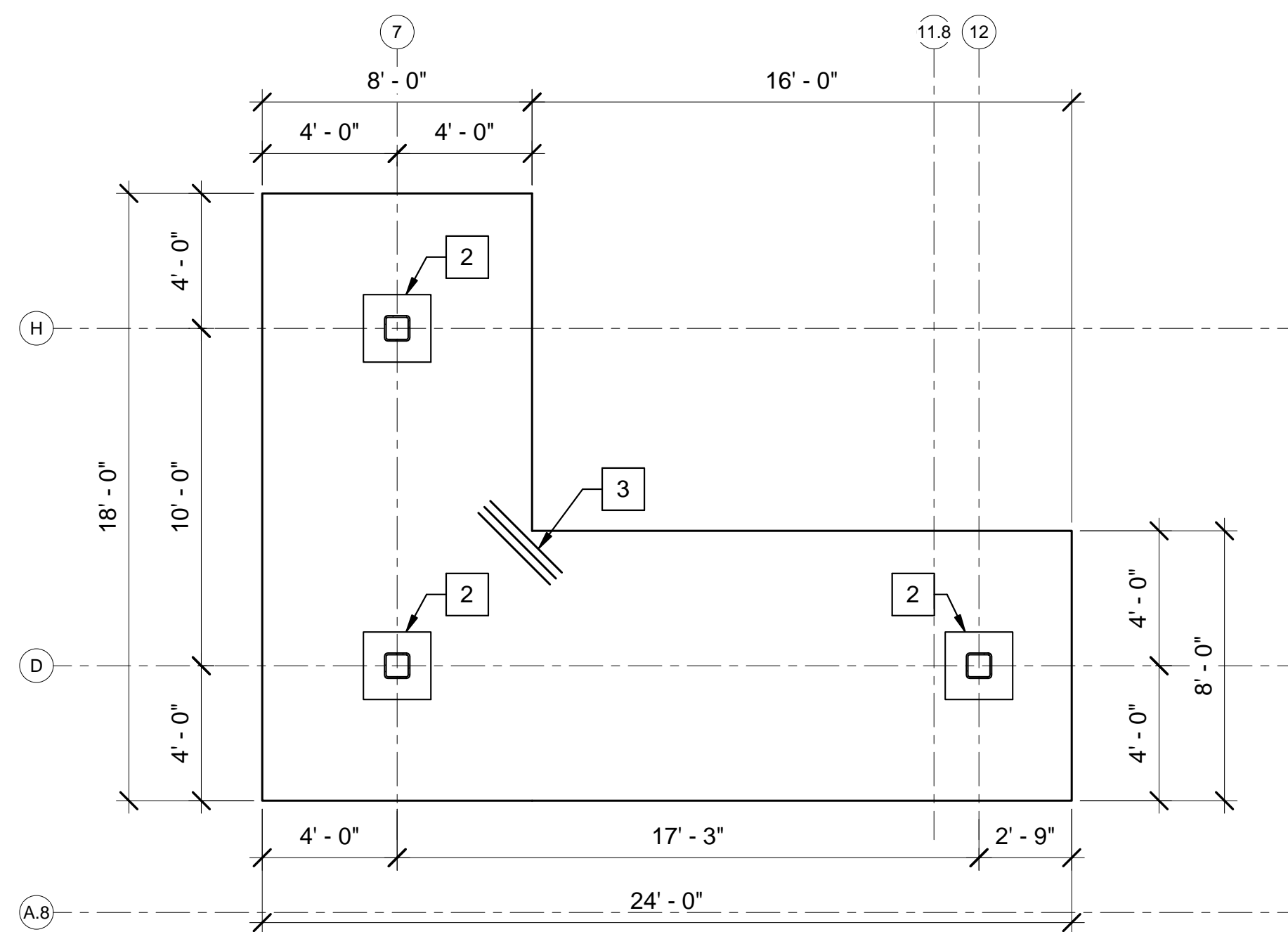


DRAWING NOTE:
REFER TO REINFORCEMENT PLACEMENT SEQUENCE DETAIL ON THIS SHEET FOR MAT REINFORCING SEQUENCE.

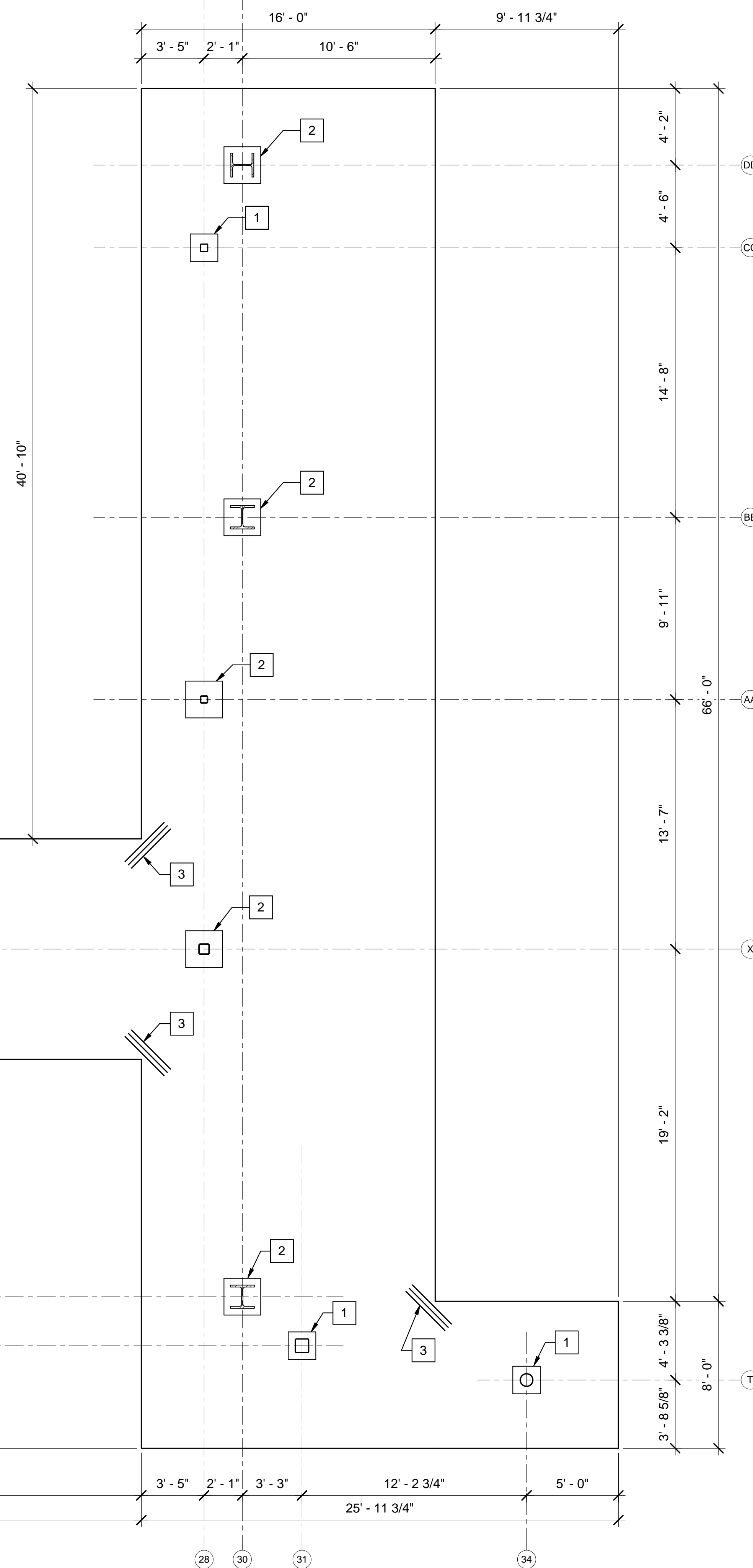
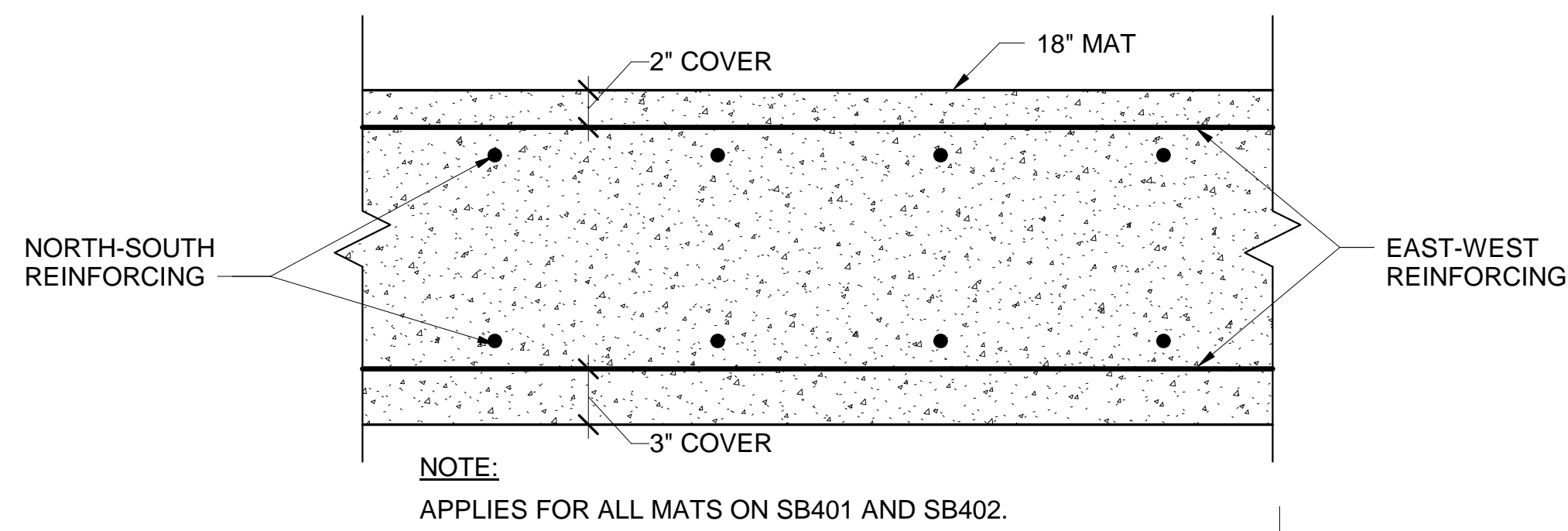
- KEYNOTES: (THIS SHEET ONLY)**
- 1 1'-6" x 1'-6" REINFORCED CONCRETE PIER.
 - 2 2'-0" x 2'-0" REINFORCED CONCRETE PIER.
 - 3 (#6) DOWELS, 3'-0" LONG WITH 3" SPACING. LOCATE BELOW TOP MAT OF REINFORCING AND ABOVE BOTTOM MAT OF REINFORCING.



- NOTES:**
- MAT THICKNESS = 18".
 - REINFORCING:
EAST-WEST = #6'S AT 18" OC TOP AND BOTTOM.
NORTH-SOUTH = #6'S AT 18" OC TOP AND BOTTOM.

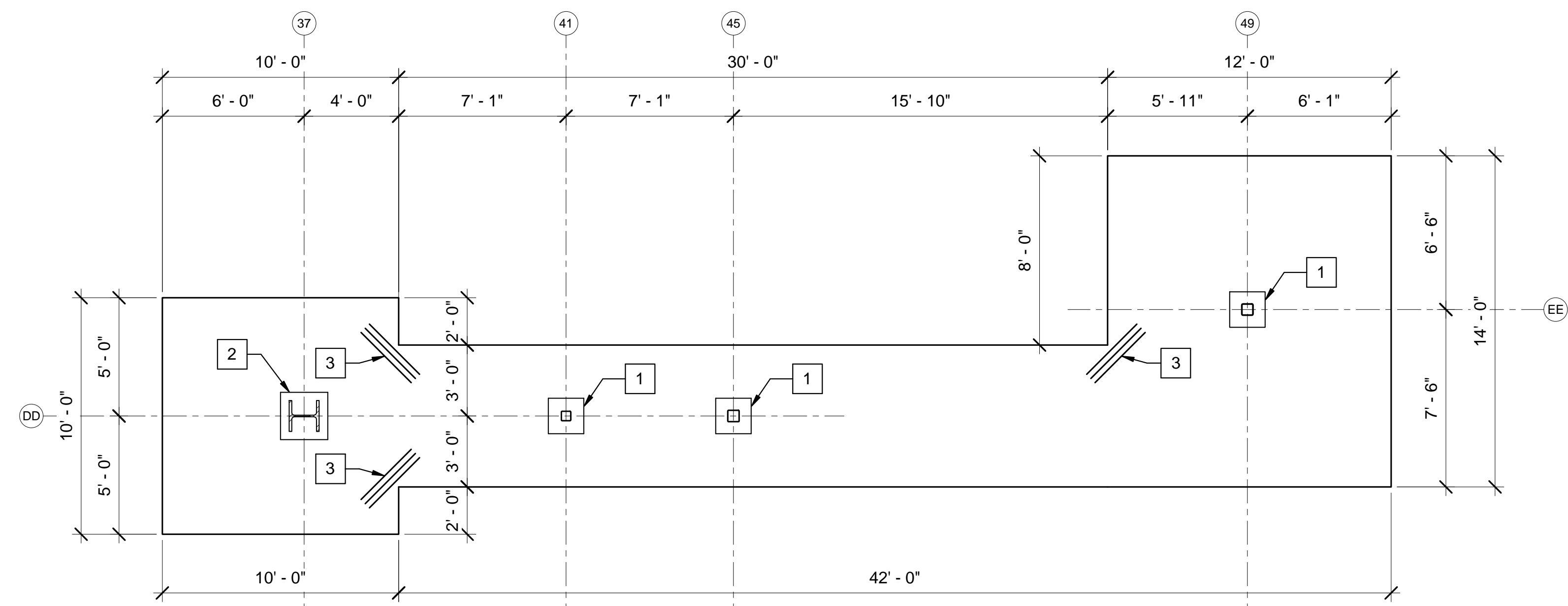
1 ENLARGED MAT 1 PLAN
SB401 SCALE: 1/4" = 1'-0"
PLAN NORTH

REINFORCING PLACEMENT SEQUENCE



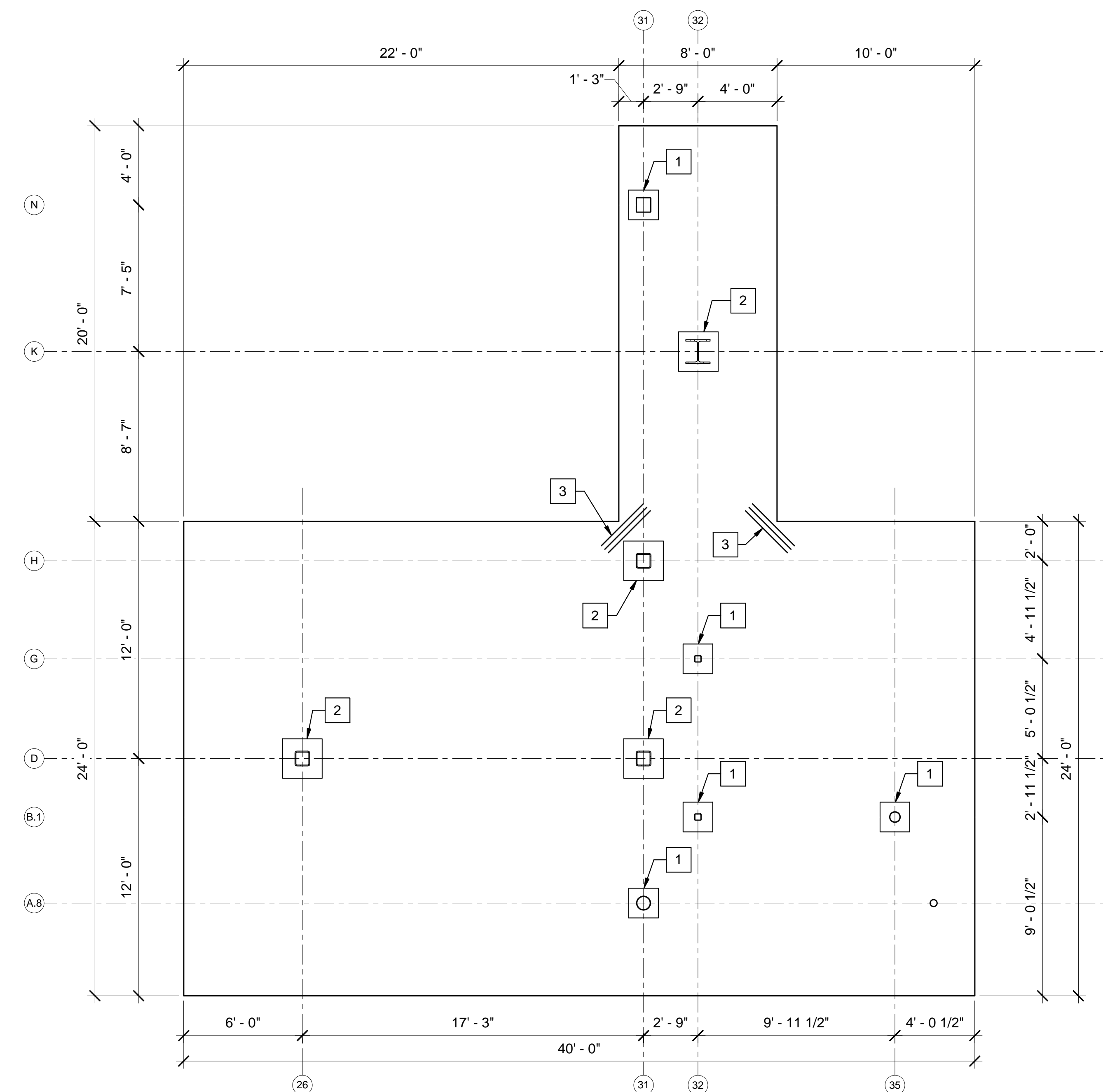
- NOTES:**
- MAT THICKNESS = 18".
 - REINFORCING:
EAST-WEST = #6'S AT 9" OC TOP AND BOTTOM.
NORTH-SOUTH = #6'S AT 9" OC TOP AND BOTTOM.

2 ENLARGED MAT 2 PLAN
SB401 SCALE: 1/4" = 1'-0"
PLAN NORTH



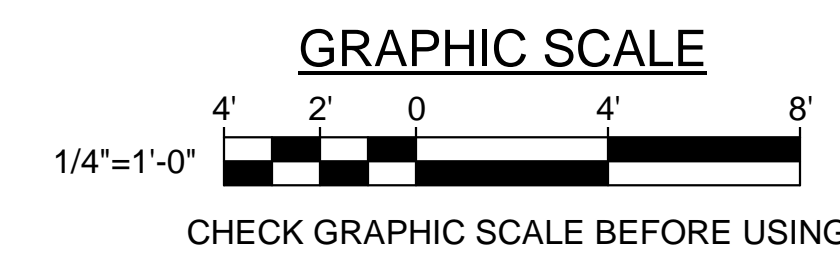
- NOTES:**
- MAT THICKNESS = 18".
 - REINFORCING:
EAST-WEST = #6'S AT 18" OC TOP AND BOTTOM.
NORTH-SOUTH = #6'S AT 12" OC TOP AND BOTTOM.

3 ENLARGED MAT 3 PLAN
SB401 SCALE: 1/4" = 1'-0"
PLAN NORTH



- NOTES:**
- MAT THICKNESS = 18".
 - REINFORCING:
EAST-WEST = #6'S AT 9" OC TOP AND BOTTOM.
NORTH-SOUTH = #6'S AT 6" OC TOP AND BOTTOM.

4 ENLARGED MAT 4 PLAN
SB401 SCALE: 1/4" = 1'-0"
PLAN NORTH



		<p>STATE OF MAINE PUBLIC SCHOOL PROJECT</p> <p>TITLE: PORTLAND PUBLIC SCHOOLS NEW FRED P. HALL ELEMENTARY SCHOOL LOCATION: 23 ORONO ROAD, PORTLAND, ME</p> <p>TITLE THIS DWG: ENLARGED MAT PLANS 1</p>
<p>DRAWN BY: MJC CHECK BY: DNM</p>	<p>DATE: 03/17/17</p>	<p>OAK POINT ASSOCIATES</p> <p>DRAWING NO. SB401 SHEET NO. 88 OF 312</p>