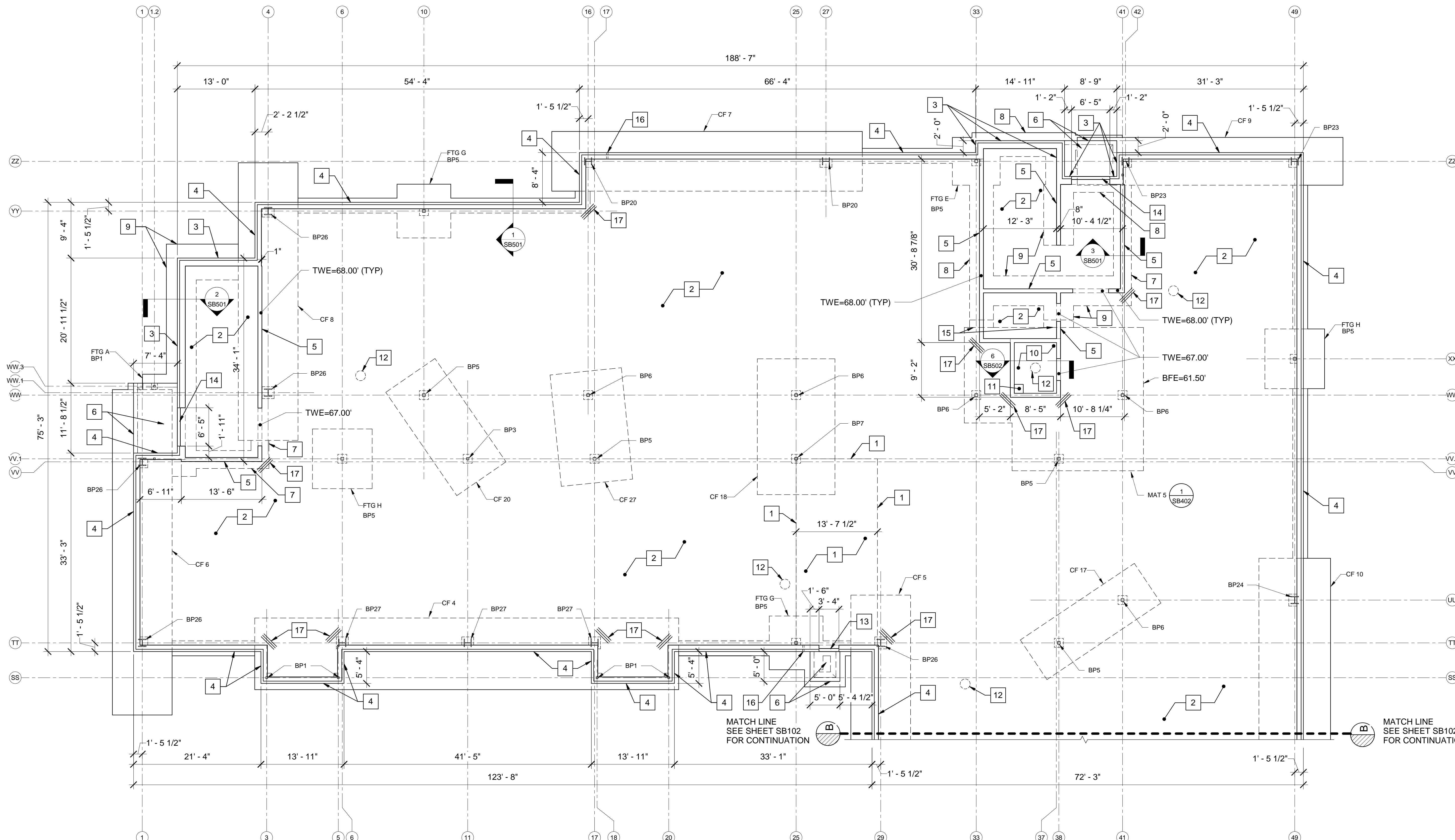


DRAWING NOTES:

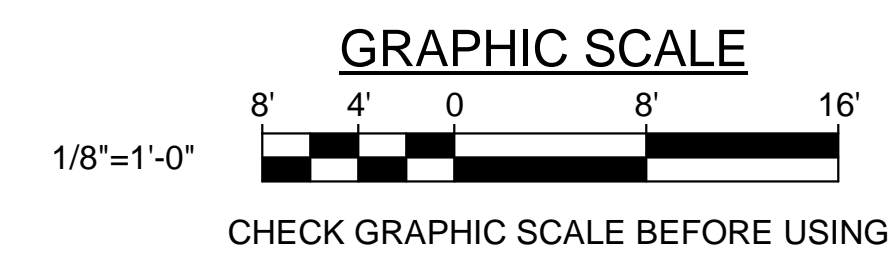
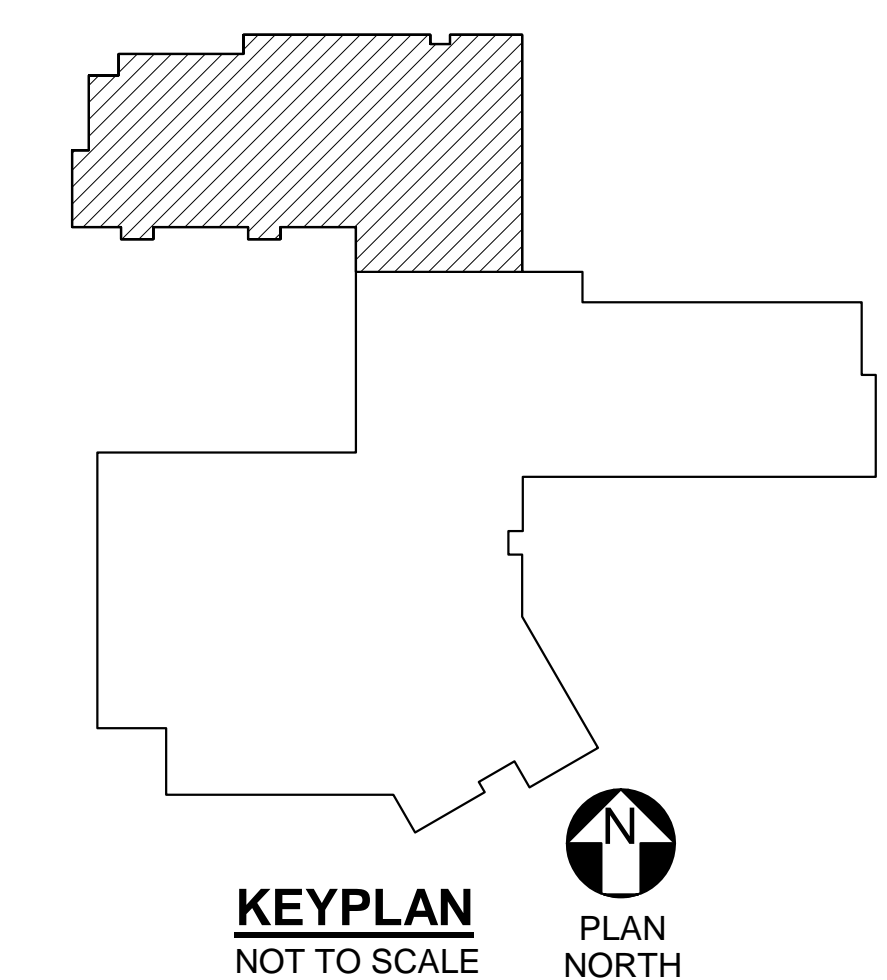
- REFER TO SHEET SB104 FOR SLAB CONTROL JOINTS AND EXPANSION JOINT LAYOUTS.
- REFER TO SHEET SB001 FOR FOOTING SCHEDULES.
- REFER TO SHEET SF604 FOR COLUMN BASE PLATE SCHEDULE.
- REFER TO PLUMBING DRAWINGS FOR FLOOR DRAIN LOCATIONS IN SLABS. PITCH SLAB-ON-GRADE TO FLOOR DRAINS AS REQUIRED.
- BOTTOM OF THE EXTERIOR AND INTERIOR CONTINUOUS FOUNDATION WALL FOOTINGS, EXTERIOR SPREAD FOOTINGS AND EXTERIOR COMBINED FOOTINGS SHALL BE 62.75', UNLESS NOTED OTHERWISE.
- BOTTOM OF THE ISOLATED INTERIOR COLUMN FOOTINGS SHALL BE 62.75', UNLESS NOTED OTHERWISE. REFER TO TYPICAL PIER DETAIL 7/SB501.
- TOP OF THE EXTERIOR FOUNDATION WALL SHALL BE 68.00' WITH AN INTEGRAL BRICK SHELF ELEVATION OF 67.56', UNLESS NOTED OTHERWISE. REFER TO TYPICAL FOUNDATION WALL DETAIL 1/SB501.
- REFER TO SHEETS SB404 AND SB405 FOR ENLARGED PIER PLAN DETAILS.
- PROVIDE FOUNDATION WALL AND SLAB-ON-GRADE CONSTRUCTION JOINTS AT EACH EDGE OF CONCRETE PLACEMENT IN ACCORDANCE WITH DETAILS 3/SB104 AND 5/SB502.
- REFER TO SHEET S-006 FOR COLUMN GRID SPACING.
- REFER TO SHEETS SB401 AND SB402 FOR ENLARGED PLAN DETAILS.
- PROVIDE CONTROL JOINTS IN FOUNDATION WALLS LOCATED BELOW BRICK VENEER CONTROL JOINTS AND AT A MAXIMUM SPACING OF 20'-0". COORDINATE WITH ARCHITECTURAL WALL ELEVATIONS FOR LOCATION OF CONTROL JOINTS. CONTROL JOINTS SHALL BE MADE BY 3/4" x 3/4" INSERTS ATTACHED TO FOUNDATION WALL FORMWORK.

KEYNOTES: (THIS SHEET ONLY)

- 6" FIBER REINFORCED CONCRETE SLAB-ON-GRADE WITH 6x6, W2.9xW2.9 WELDED WIRE FABRIC. TOP OF SLAB ELEVATION = 68.00'.
- 4" FIBER REINFORCED CONCRETE SLAB-ON-GRADE WITH 6x6, W2.9xW2.9 WELDED WIRE FABRIC. TOP OF SLAB ELEVATION = 68.00'.
- 1'-4" REINFORCED CONCRETE FOUNDATION WALL. SEE DETAIL 2/SB501.
- 1'-1" REINFORCED CONCRETE FOUNDATION WALL. SEE DETAIL 1/SB501.
- 8" REINFORCED CONCRETE FOUNDATION WALL. SEE DETAIL 3/SB501.
- REINFORCED CONCRETE STOOP. SEE DETAIL 5/SB501.
- 1'-0" x 3'-0" REINFORCED CONCRETE WALL FOOTING WITH (3) #5'S CONTINUOUS AT BOTTOM.
- 1'-0" x 4'-0" REINFORCED CONCRETE WALL FOOTING WITH (4) #5'S CONTINUOUS AT BOTTOM.
- 1'-0" x 5'-0" REINFORCED CONCRETE STRIP FOOTING WITH (5) #5'S CONTINUOUS AT BOTTOM.
- REINFORCED CONCRETE ELEVATOR PIT. SEE DETAIL 6/SB502.
- 1'-6" x 1'-6" x 2'-0" DEEP REINFORCED CONCRETE SUMP PIT. SEE DETAIL 7/SB502.
- RADON PIT. SEE DETAIL 3/SB502.
- 1'-1" REINFORCED CONCRETE FOUNDATION WALL AT DOOR. SEE DETAIL 5/SB501.
- 1'-4" REINFORCED CONCRETE FOUNDATION WALL AT DOOR. SEE DETAIL 5/SB501 (SIMILAR).
- STEP FOOTING. SEE DETAIL 4/SB502.
- UTILITY SLEEVE(S). COORDINATE EXACT QUANTITY, SIZE, LOCATION AND ELEVATION WITH CIVIL, PLUMBING AND ELECTRICAL PLANS.
- (3) #4 DOWELS, 3'-0" LONG AT 4" ON-CENTER. LOCATE IN MIDDLE OF SLAB.



1 FOUNDATION PART PLAN - WING C
 SB103 SCALE: 1/8" = 1'-0"
 PLAN NORTH



		<p>STATE OF MAINE PUBLIC SCHOOL PROJECT TITLE: PORTLAND PUBLIC SCHOOLS NEW FRED P. HALL ELEMENTARY SCHOOL LOCATION: 23 ORONO ROAD, PORTLAND, ME TITLE THIS DWG.: FOUNDATION PART PLAN - WING C</p>
DRAWN BY: JEG CHECK BY: DNM	DATE: 03/17/17	<p>OAK POINT ASSOCIATES DRAWING NO. SB103 SHEET NO. 86 OF 312</p>