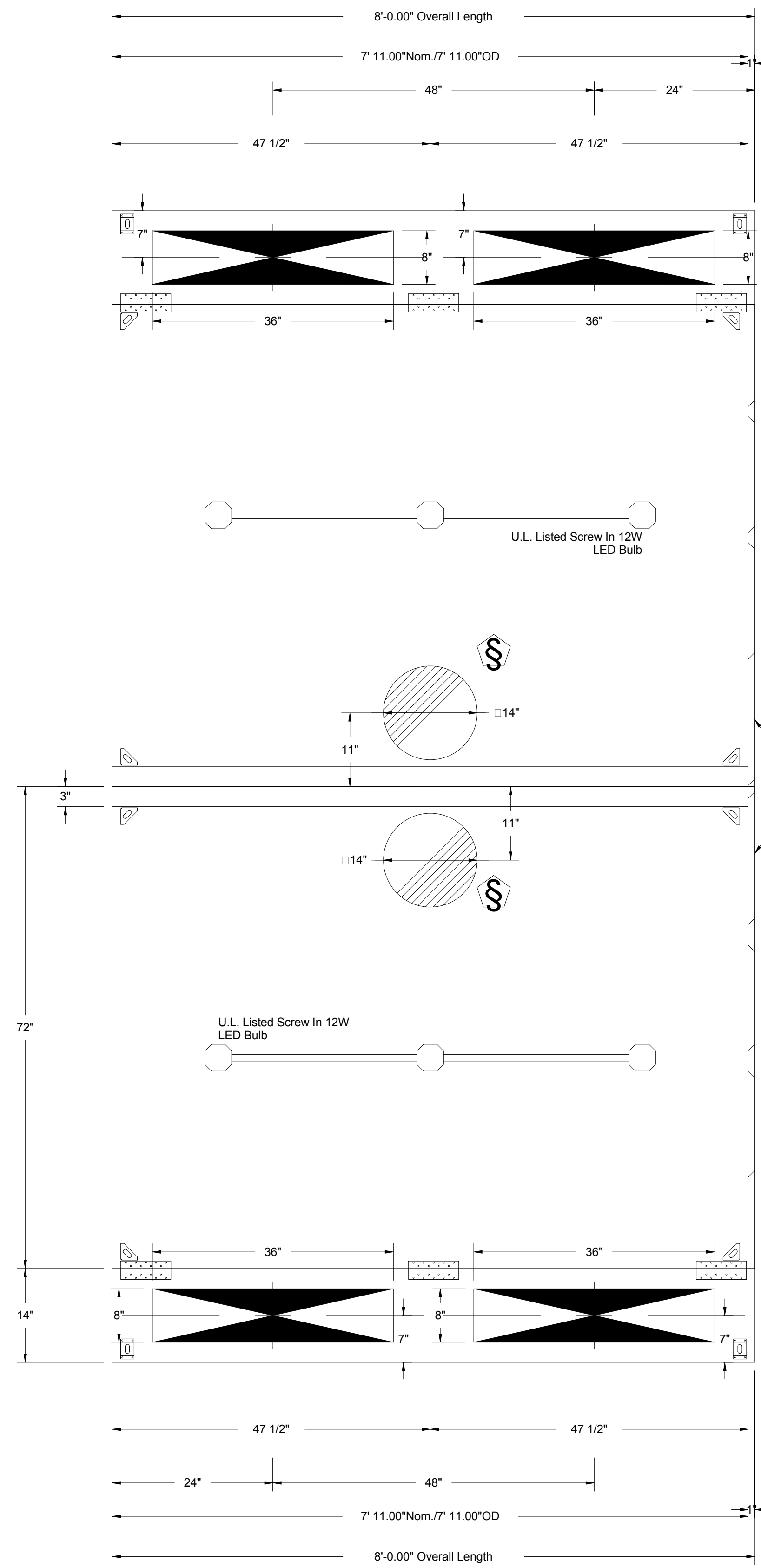
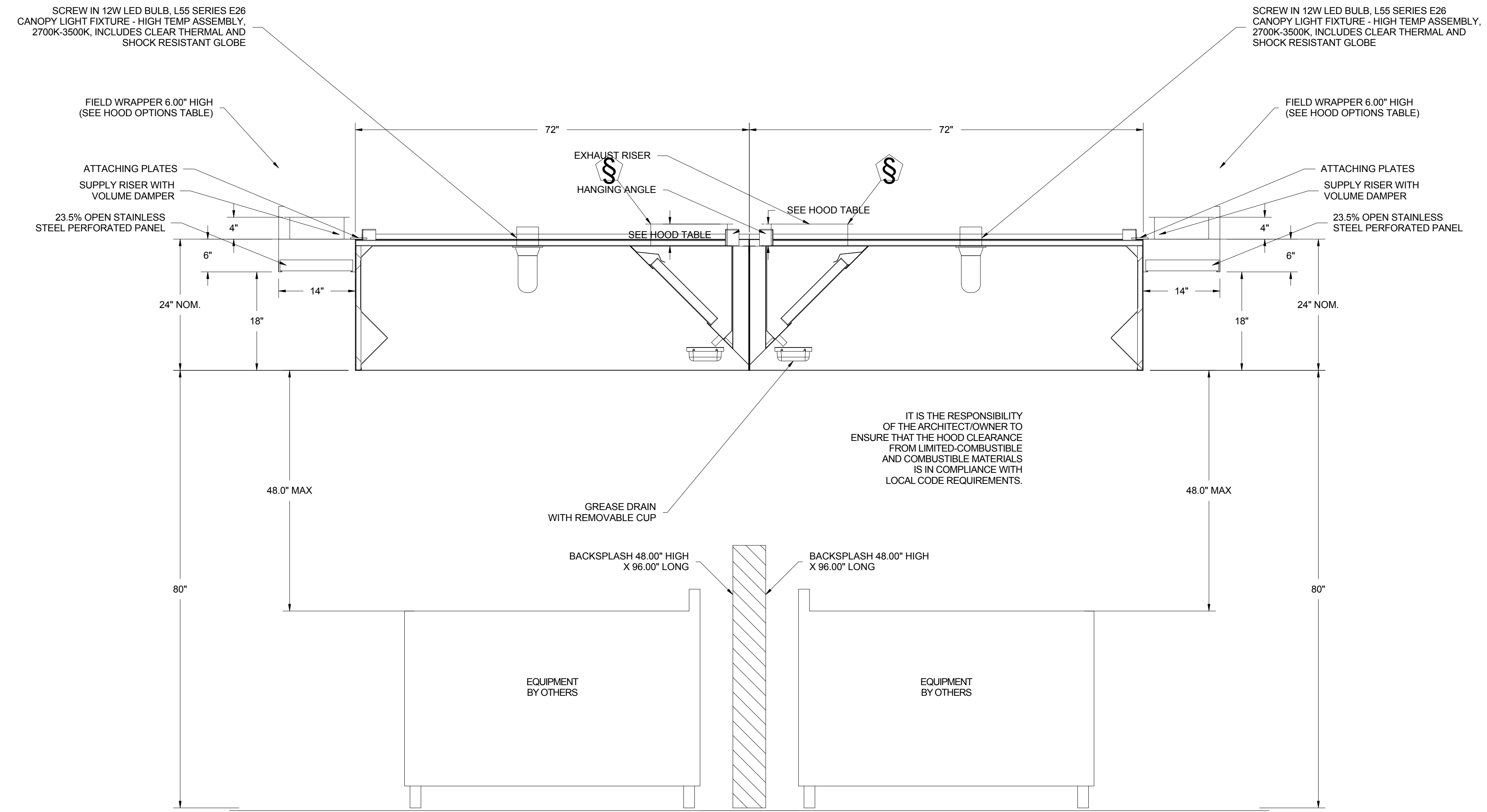


PLAN VIEW - Hood #3 (#16 -
7' 11.00" LONG
7224ND-2-PSP-F



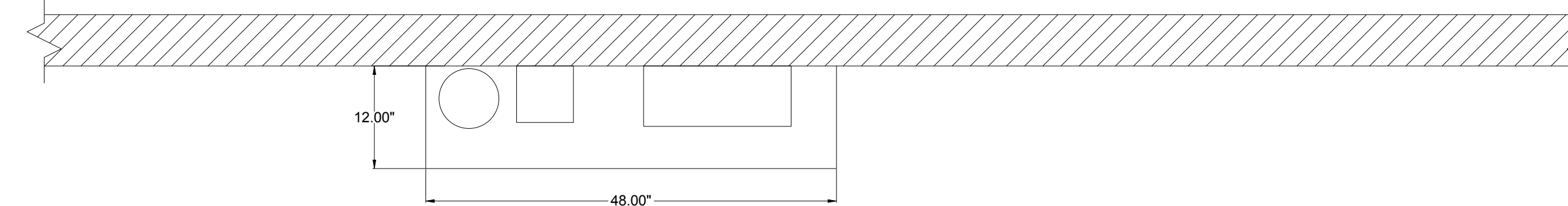
PLAN VIEW - Hood #2 (#16 -
7' 11.00" LONG
7224ND-2-PSP-F



SECTION VIEW - MODEL
HOODND-#2-#16-F-
Back)

SECTION VIEW - MODEL
HOODND-#2-#16-F-
Front)

PLAN VIEW, WALL MOUNTED UTILITY CABINET



24" TALL WALL MOUNTED UTILITY CABINET TO HOUSE FIRE SYSTEMA AND HOOD CONTROLS. SWITCHPAD TO SHIP LOOSE FOR MOUNTING ON WALL IN CONVENIENT LOCATION.

CAPTIVE

MAINE OFFICE

PO Box 86, 179 South Rd., Topshfield, ME 04489 PHONE: (207) 796-2590 FAX: (919) 227-5946 EMAIL: reg2@captivate.com

Hall Elementary School - Portland
23 Orono Rd.,
PORTLAND, ME, 04102

12/22/2016

2870227

BFC-21

3/4" =
1'-0"

MASTER DRAWING

3

STATE OF MAINE
PUBLIC SCHOOL PROJECT

TITLE PORTLAND PUBLIC SCHOOLS
NEW FRED P. HALL ELEMENTARY SCHOOL
LOCATION 23 ORONO ROAD, PORTLAND, ME

TITLE THIS DWG.
FOODSERVICE EQUIPMENT EXHAUST
HOOD DETAILS 3

OAK POINT
ASSOCIATES
Q-110

227.283.9192 227.283.9192 227 OF 312

NO.	DATE	DESCRIPTION	BY	NO.
		REVISIONS		

DRAWN BY: TJM
CHECK BY: TJM
DATE 03/17/17