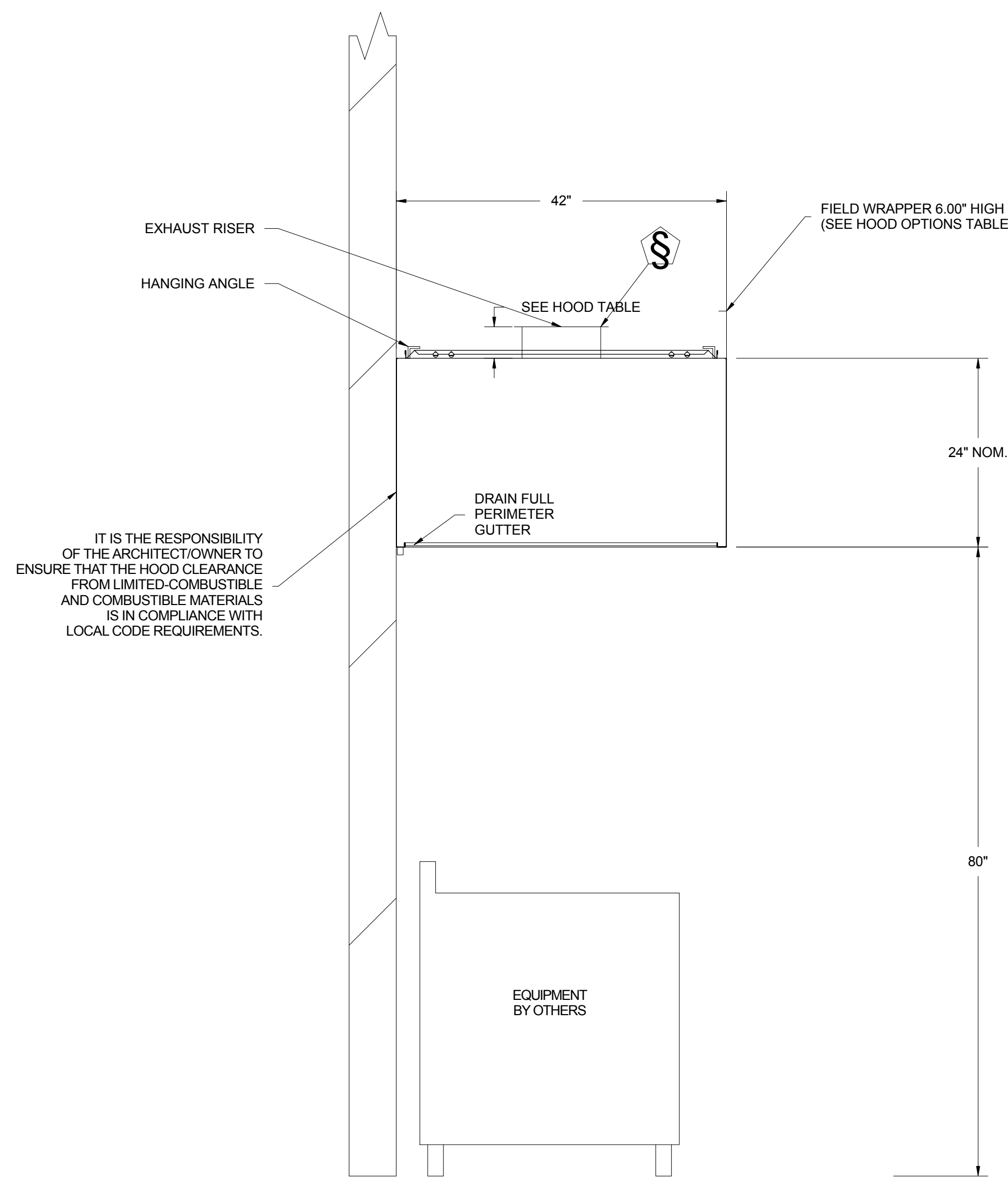
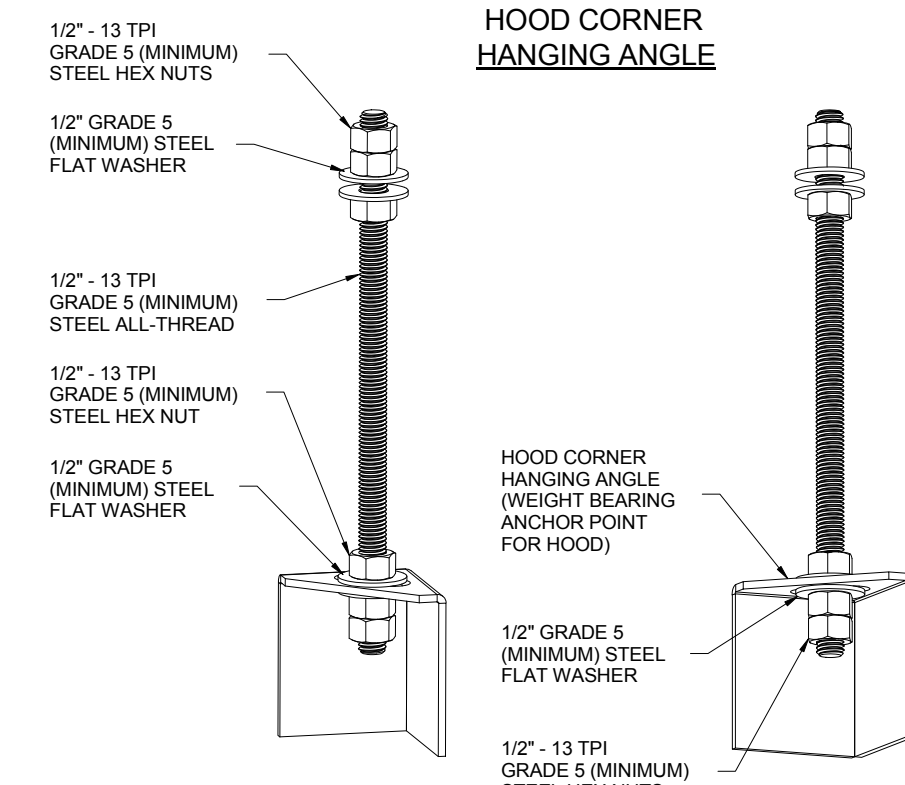


PLAN VIEW - Hood #1
6'-0.00(4) LONG
4224VHR-G

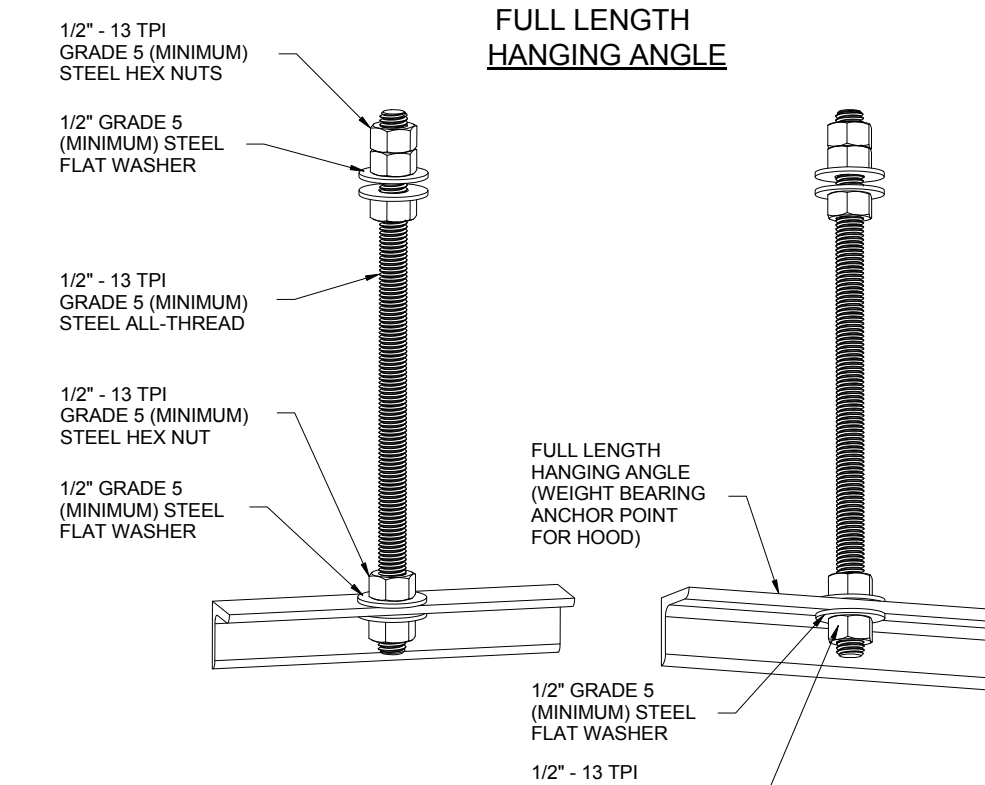


SECTION VIEW - MODEL
HOOD#1B#C
(#4)



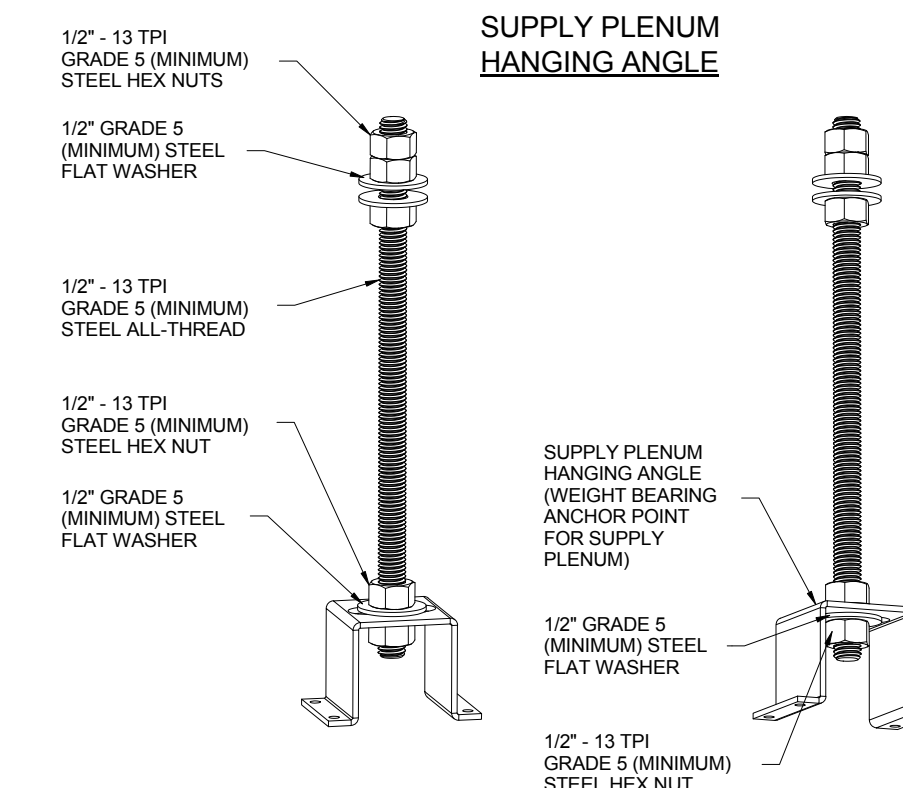
ASSEMBLY INSTRUCTIONS

HANGING ANGLE MUST BE SUPPORTED WITH 1/2\" - 13 TPI GRADE 5 (MINIMUM) ALL-THREAD, SANDWICH HANGING ANGLES AND CEILING ANCHOR POINTS WITH 1/2\" GRADE 5 (MINIMUM) STEEL FLAT WASHERS AND 1/2\" - 13 TPI GRADE 5 (MINIMUM) HEX NUTS AS SHOWN. MUST USE DOUBLED HEX NUT CONFIGURATION BENEATH HOOD HANGING ANGLES AND ABOVE CEILING ANCHORS. MAINTAIN 1/4\" OF EXPOSED THREADS BENEATH BOTTOM HEX NUT. TORQUE ALL HEX NUTS TO 57 FT-LBS.



ASSEMBLY INSTRUCTIONS

HANGING ANGLE MUST BE SUPPORTED WITH 1/2\" - 13 TPI GRADE 5 (MINIMUM) ALL-THREAD, SANDWICH HANGING ANGLES AND CEILING ANCHOR POINTS WITH 1/2\" GRADE 5 (MINIMUM) STEEL FLAT WASHERS AND 1/2\" - 13 TPI GRADE 5 (MINIMUM) HEX NUTS AS SHOWN. MUST USE DOUBLED HEX NUT CONFIGURATION ABOVE CEILING ANCHORS. SINGLE HEX NUT BENEATH HANGING ANGLE IS ACCEPTABLE FOR FULL LENGTH HANGING ANGLES. MAINTAIN 1/4\" OF EXPOSED THREADS BENEATH BOTTOM HEX NUT. TORQUE ALL HEX NUTS TO 57 FT-LBS.



ASSEMBLY INSTRUCTIONS

HANGING ANGLE MUST BE SUPPORTED WITH 1/2\" - 13 TPI GRADE 5 (MINIMUM) ALL-THREAD, SANDWICH HANGING ANGLES AND CEILING ANCHOR POINTS WITH 1/2\" GRADE 5 (MINIMUM) STEEL FLAT WASHERS AND 1/2\" - 13 TPI GRADE 5 (MINIMUM) HEX NUTS AS SHOWN. MUST USE DOUBLED HEX NUT CONFIGURATION ABOVE CEILING ANCHORS. SINGLE HEX NUT BENEATH HANGING ANGLE IS ACCEPTABLE FOR PSP HANGING ANGLES. MAINTAIN 1/4\" OF EXPOSED THREADS BENEATH BOTTOM HEX NUT. TORQUE ALL HEX NUTS TO 57 FT-LBS.

CAPTIVE

MAINE OFFICE

PO Box 86, 179 South Rd., Topsfield, ME 04490 PHONE: (207) 796-2590 FAX: (919) 227-5946 EMAIL: reg2@captivate.com

Hall Elementary School - Portland
23 Orono Rd.,
PORTLAND, ME, 04102

12/22/2016

2870227

BFC-21

3/4" = 1'-0"

MASTER DRAWING

2

NO.	DATE	DESCRIPTION	BY	NO.
		REVISIONS		

STATE OF MAINE
PUBLIC SCHOOL PROJECT

TITLE PORTLAND PUBLIC SCHOOLS
NEW FRED P. HALL ELEMENTARY SCHOOL
LOCATION 23 ORONO ROAD, PORTLAND, ME

TITLE THIS DWG.
FOODSERVICE EQUIPMENT EXHAUST
HOOD DETAILS 2

DRAWN BY: TJM
CHECK BY: TJM

DATE 03/17/17

OAK POINT ASSOCIATES
Q-109
SHEET NO.

226 OF 312