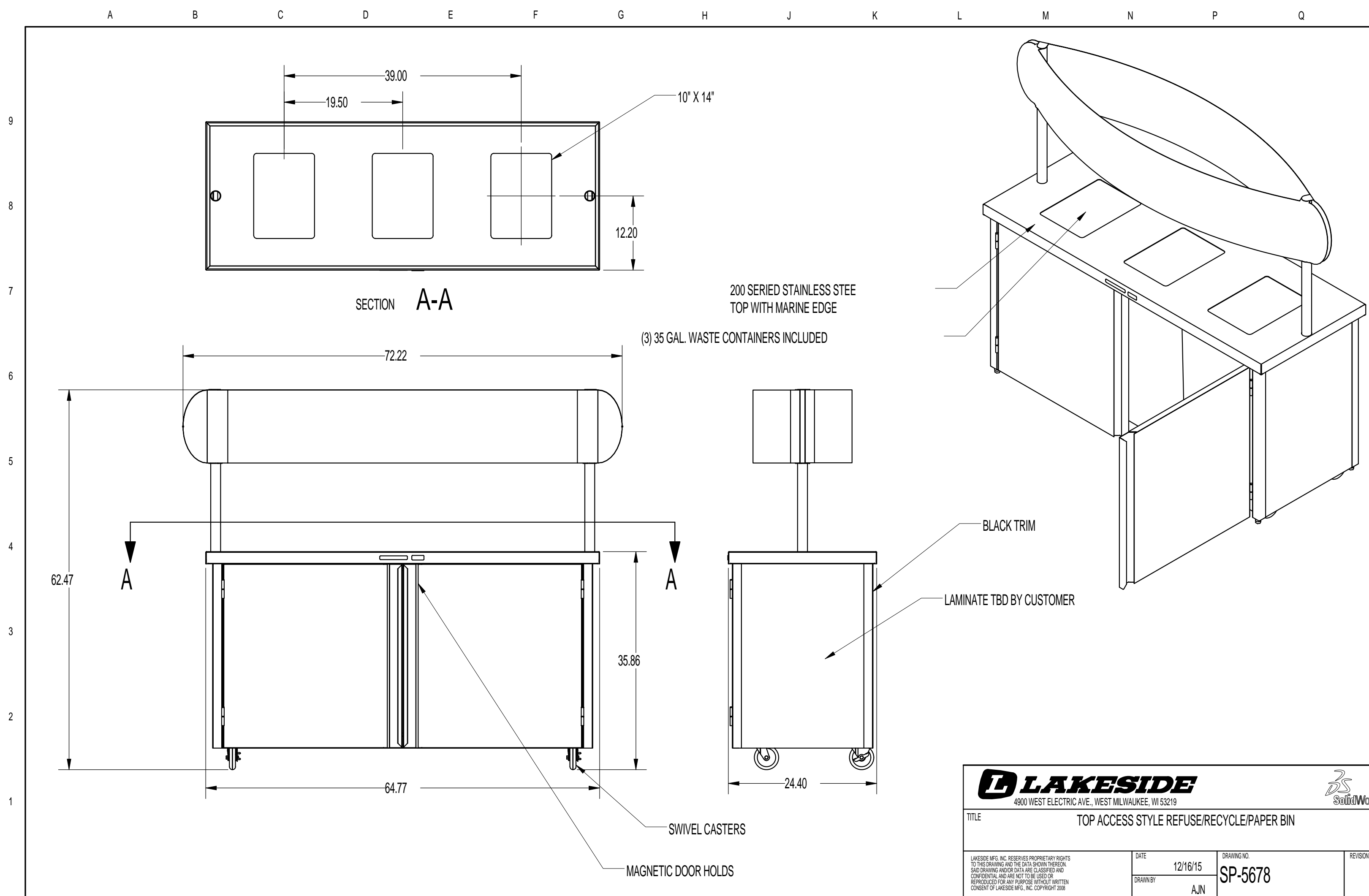


### Foodservice Equipment Mechanical Schedule

ITEM #	QTY	DESCRIPTION	Electrical					Plumbing				Gas		Ventilation				Notes	
			Volts	Phase	Watts	HP	FL Amps	Hot Water	Cold Water	Direct Waste	Indirect Waste	Size	BTU's	Exhaust CFM's	Depth	Width	Supply CFM's		Depth
1	1	Mop Sink																	
1.1	1	Service Faucet						1/2"	1/2"										
2	1	Shelving Unit																	
3	1	Dishable, Clean																	
4	1	Condensate Hood										600	10" Diameter						
5	1	Dishwasher, Door-Type	208 V	3			45 A	3/4"											
6	1	Dishable, Soiled																	
6.1	1	Pre-Rinse Faucet						1/2"	1/2"										
7	1	Disposer	208 V	3		2	3 A	1/2"	1/2"	2"									
7.1	1	Disposer Control Panel	0 V	0															
8	1	Sink, 3-Compartment						0"	0"	2"	0"								
8.1	2	Double Pantry Faucet						1/2"	1/2"										
9	1	Pot Rack, Wall Mounted																	
10	3	Hand Sink						1/2"	1/2"	1 1/2"									
12	2	Shelving Unit																	
13	2	Convection Oven, Double	115 V	1	920 W		8 A					3/4"	90000.0 Btu/h						
14	1	Range, 6-Burner										3/4"	215000.0 Btu/h						
15	1	Steamer, Double	208 V	3	170000 W		47 A		3/4"	-	3/4"								(2) Two electrical connections required.
16	2	Exhaust Hood	120 V				15 A						1583	14" Diameter	2 @ 633	2 @ 8" x 36"			
19	2	Bun Pan Rack																	
20	1	Refrigerator, Roll-In	208 V	1		0.75	14 A												
21	2	Work Table																	
22	2	Rethermalization Cabinet	208 V	1	8410 W		40 A												
24	1	Work Table with Sink									2"								
24.1	1	Faucet, Splash Mounted						1/2"	1/2"										
25	2	Wall Shelf																	
30	2	Milk Cooler	115 V	1		0.50	8 A				3/4"								
31	2	Serving Counter, Flat Top																	
32	2	Serving Counter, Hot Food	240 V	1			13 A												
33	2	Tray Stand																	
34	1	Serving Counter, Salad Bar	120 V	1		1/4	7 A												
35	1	Serving Counter, Cashier Station																	
36	7	Shelving Unit																	
37	1	Trash/Recycling/Compost Station																	
38	1	Walk-In Freezer	120 V	1			15 A												
39	1	Evaporator Coil, Freezer	208 V	1	1643 W		8 A						1500 CFM						
40	1	Compressor, Freezer	208 V	3	5110 W	2	14 A												
41	1	Walk-In Cooler	120 V	1			15 A												
42	1	Evaporator Coil, Cooler	115 V	1	207 W		2 A						1540 CFM						
43	1	Compressor, Freezer	208 V	3	1871 W	3/4	5 A												
44	10	Shelving Unit																	



Trash/Recycle/Compost Cart  
Item # 37

STATE OF MAINE PUBLIC SCHOOL PROJECT	
TITLE PORTLAND PUBLIC SCHOOLS NEW FRED P. HALL ELEMENTARY SCHOOL	
LOCATION 23 ORONO ROAD, PORTLAND, ME	
TITLE THIS DWG. FOODSERVICE EQUIPMENT MECHANICAL SCHEDULE	
DRAWN BY: TJM	DRAWING NO. <b>Q-102</b>
CHECK BY: TJM	SHEET NO.
NO. DATE	DESCRIPTION
BY	NO.
REVISIONS	DATE 03/17/17