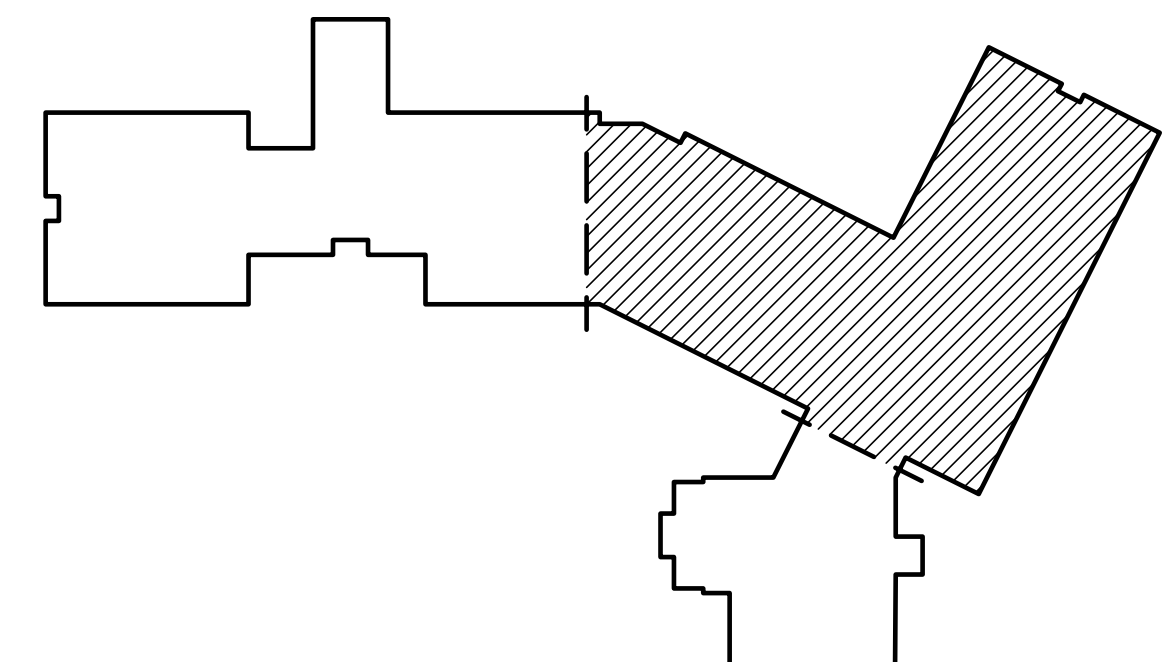


DRAWING NOTES

1. REMOVALS INDICATED ON THIS DRAWING SHALL BE ACCOMPLISHED DURING PHASES 1 & 3 AS INDICATED.
2. PIPING AND PLUMBING SYSTEMS THAT ARE TO BE REMOVED DURING PHASE 3 SHALL REMAIN FULLY OPERATIONAL DURING PHASES 1 AND 2.
3. PIPING IS LOCATED IN THE CRAWL SPACE UNLESS OTHERWISE INDICATED.

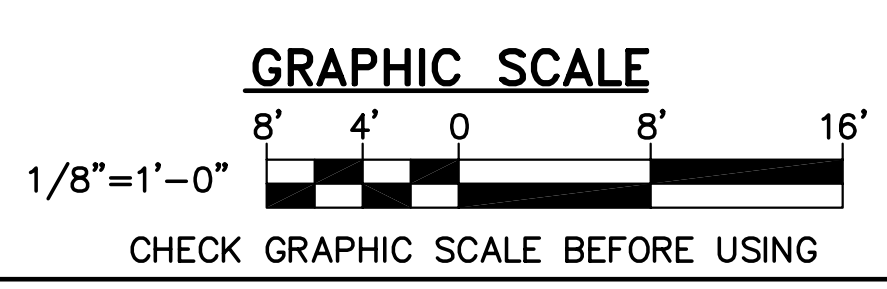
DRAWING KEYNOTES

- △ CUT AND CAP HW, CW, SAN, AND ST AS PART OF PHASE 1 REMOVALS.
- △ AS PART OF PHASE 1 PROVIDE STORM DRAIN PIPING TO CONNECT ROOF DRAIN TO STORM DRAIN PIPING IN CRAWL SPACE.
- △ AS PART OF PHASE 1 PROVIDE PIPING TO MAINTAIN THE DW RECIRCULATION LOOP UNTIL PHASE 3 REMOVALS.
- △ PIPING IS EXPOSED AT THE CEILING.



KEY PLAN:
PLAN NORTH

1 PLUMBING REMOVALS PART PLAN
PD102 SCALE: 1/8"=1'-0"
PLAN NORTH



STATE OF MAINE PUBLIC SCHOOL PROJECT	
TITLE: PORTLAND PUBLIC SCHOOLS NEW FRED P. HALL ELEMENTARY SCHOOL LOCATION: 523 OROND ROAD, PORTLAND, ME	
TITLE THIS DWG: PLUMBING REMOVALS PART PLAN	
NO.	DATE
DESCRIPTION	BY
REVISIONS	
DATE: 03/17/17	

DRAWN BY: KLG
CHECKED BY: MSA

OAK POINT ASSOCIATES

DRAWING NO. **PD102**
SHEET NO. **257** of 312

231 Main Street, Biddeford, Maine 04005 207.283.2193