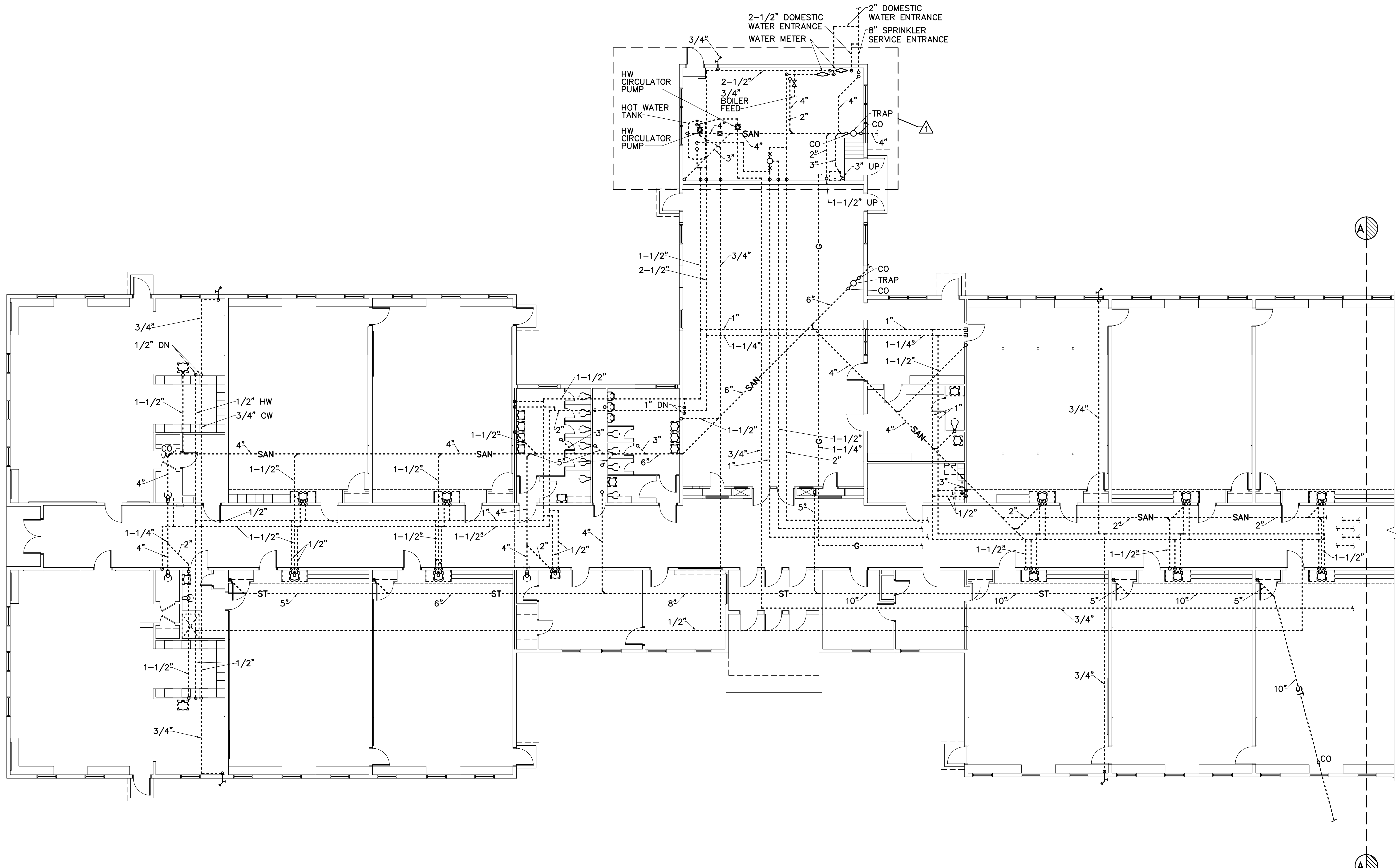


DRAWING NOTES

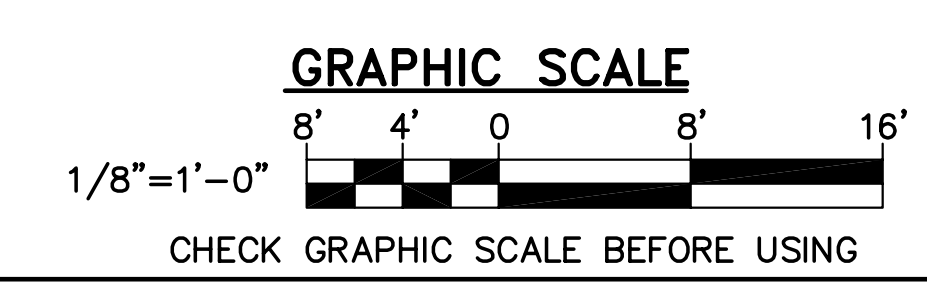
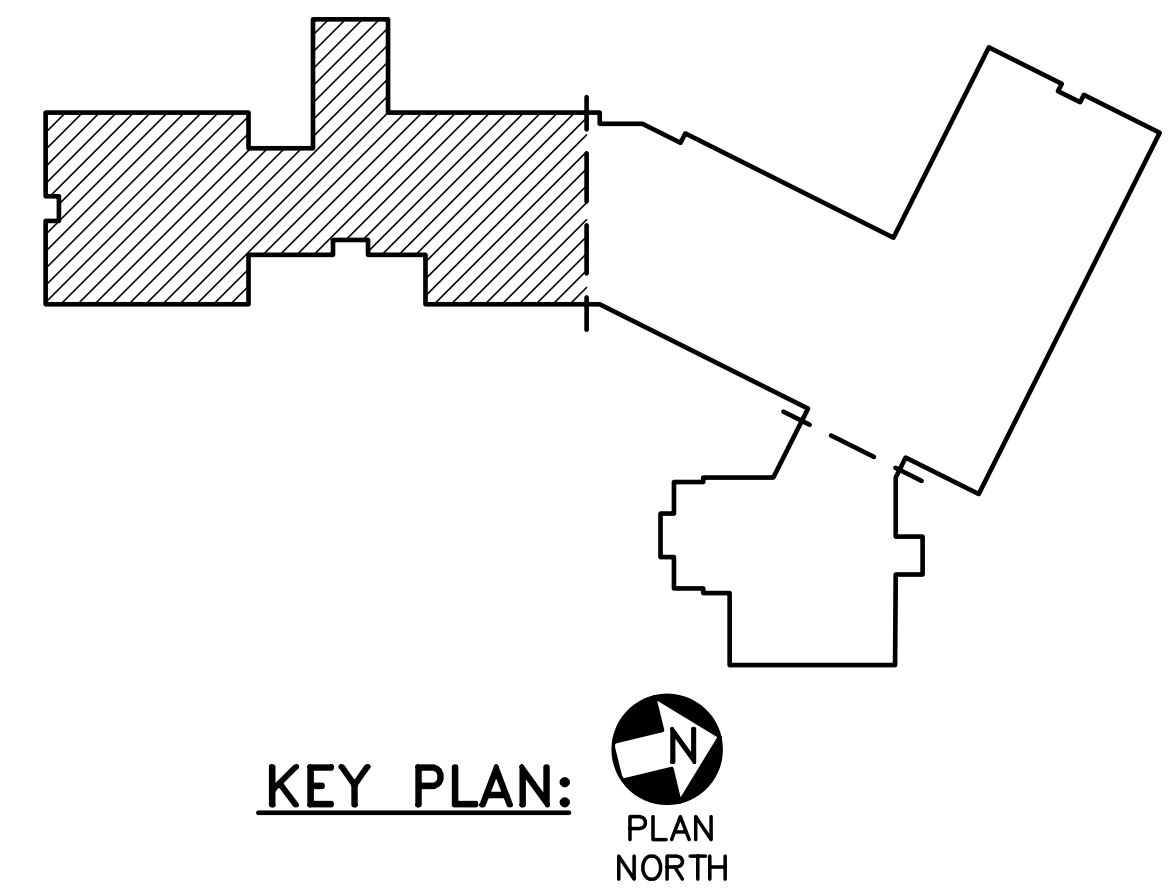
1. REMOVALS INDICATED ON THIS DRAWING SHALL BE COMPLETED DURING PHASE 3.
2. PIPING AND PLUMBING SYSTEMS THAT ARE TO BE REMOVED DURING PHASE 3 SHALL REMAIN FULLY OPERATIONAL DURING PHASES 1 AND 2.
3. PIPING IS LOCATED IN THE CRAWL SPACE UNLESS OTHERWISE INDICATED.

DRAWING KEYNOTE

△ PIPING IN THIS AREA IS EXPOSED IN THE BOILER ROOM.



1 PLUMBING REMOVALS PART PLAN
 PD101 SCALE: 1/8"=1'-0"
 PLAN NORTH



		STATE OF MAINE PUBLIC SCHOOL PROJECT TITLE: PORTLAND PUBLIC SCHOOLS NEW FRED P. HALL ELEMENTARY SCHOOL LOCATION: 53 OROND ROAD, PORTLAND, ME TITLE THIS DWG: PLUMBING REMOVALS PART PLAN	
DRAWN BY: KLG CHECKED BY: MSA		OAK POINT ASSOCIATES DRAWING NO. PD101 SHEET NO. 256 OF 312	
NO.	DATE	DESCRIPTION	BY
		REVISIONS	
		DATE: 03/17/17	