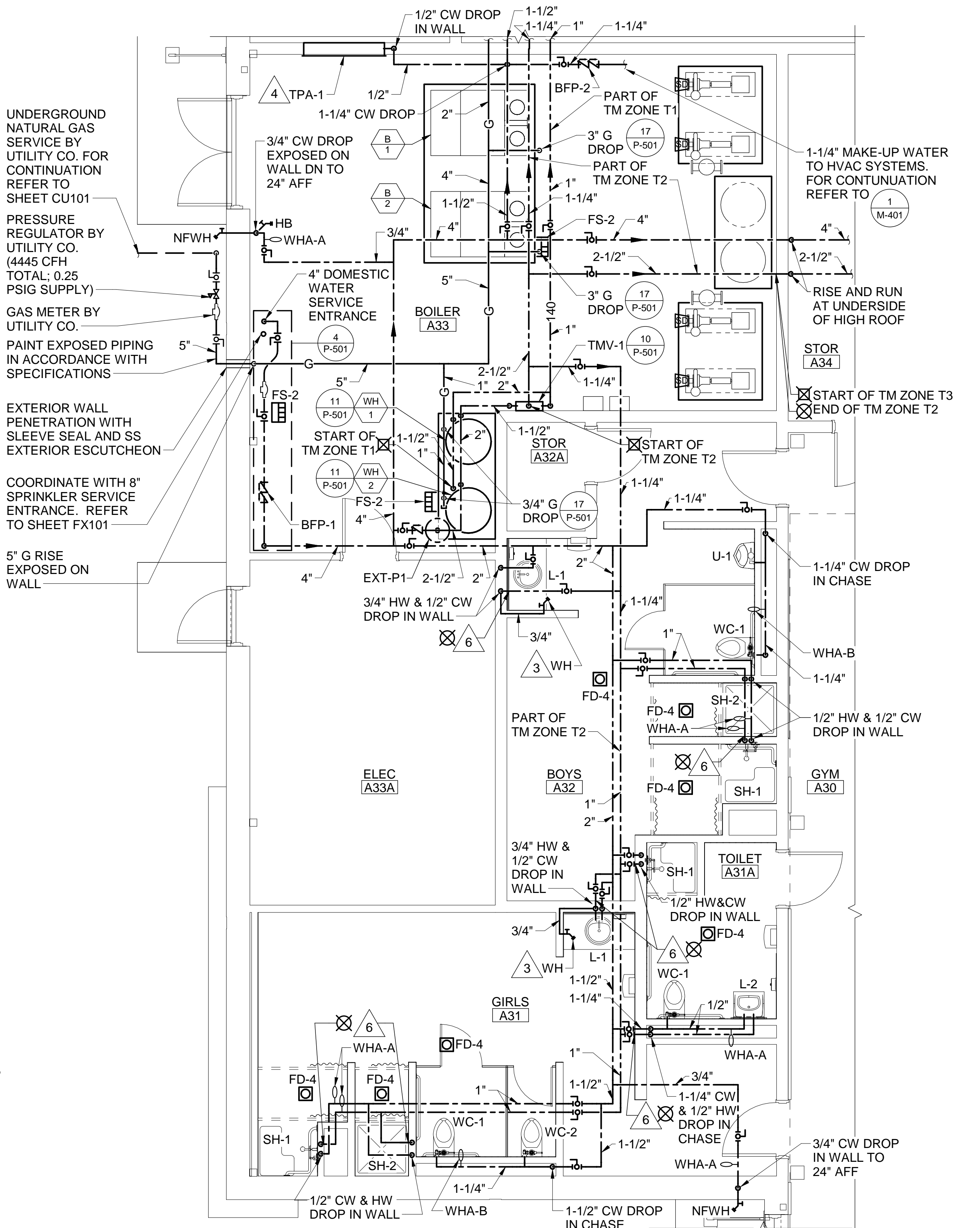
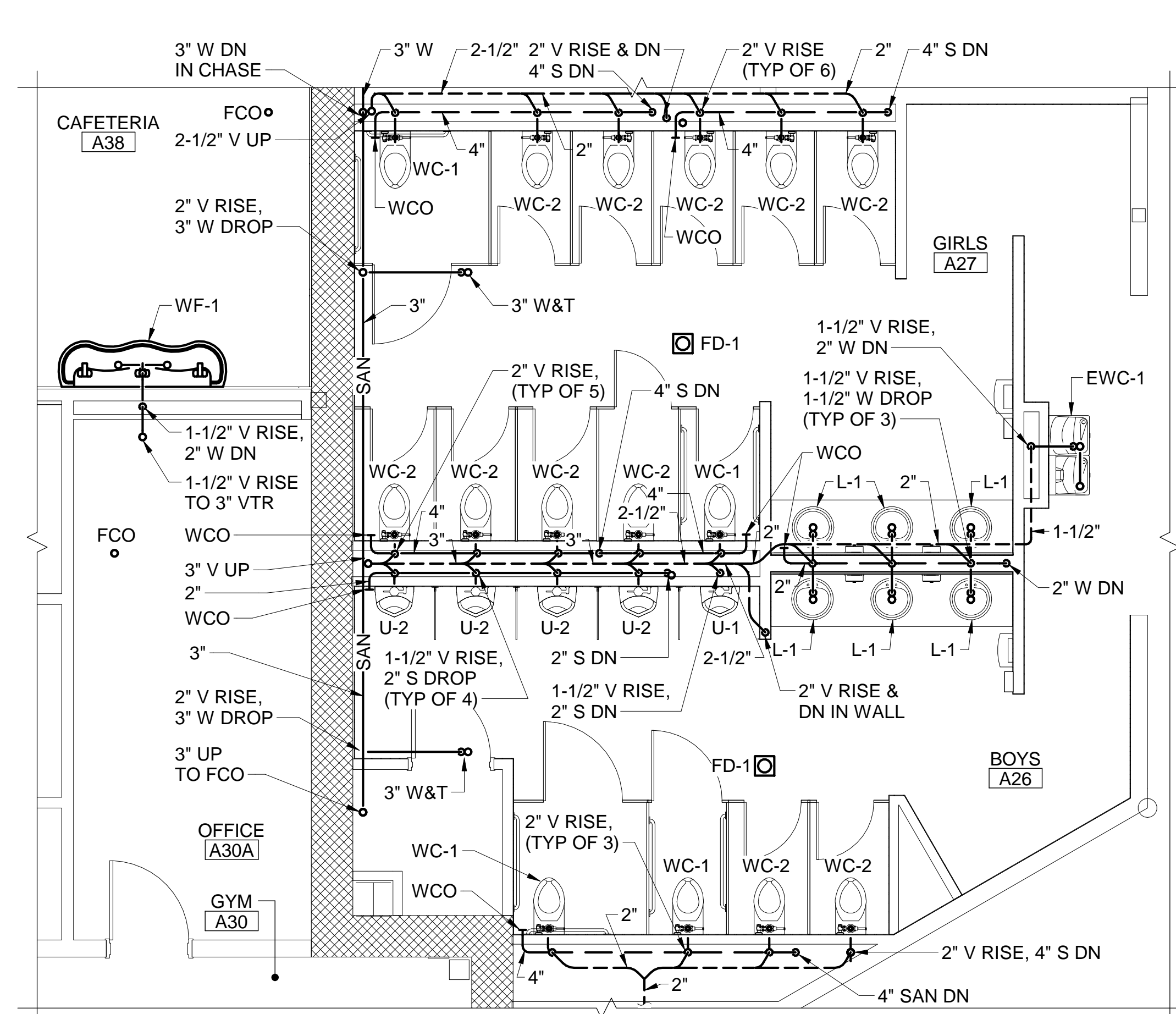


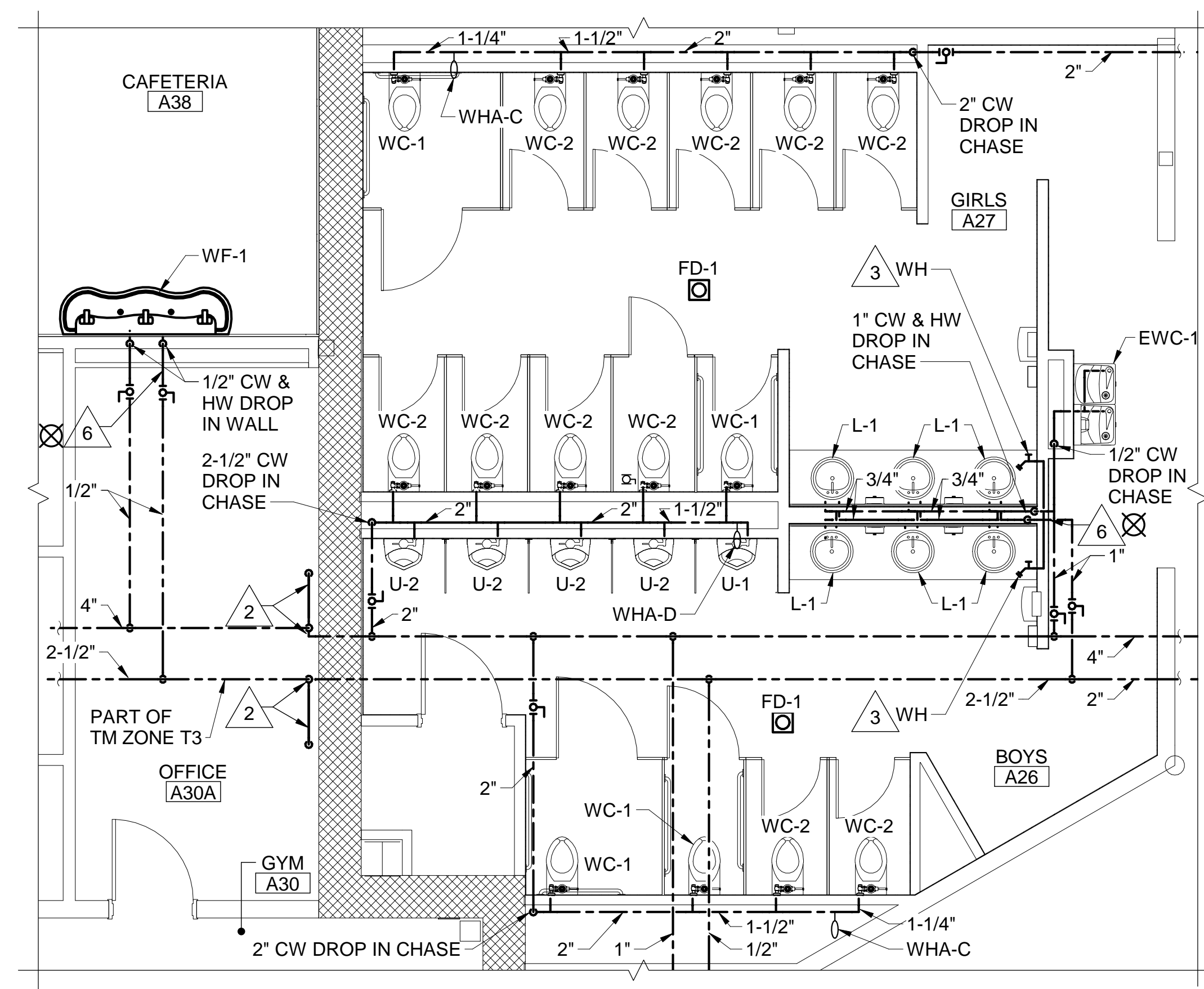
1 ROOMS A31, A32, A33 FIRST FLOOR SANITARY PART PLAN
P-104 P-401 SCALE: 1/4" = 1'-0"



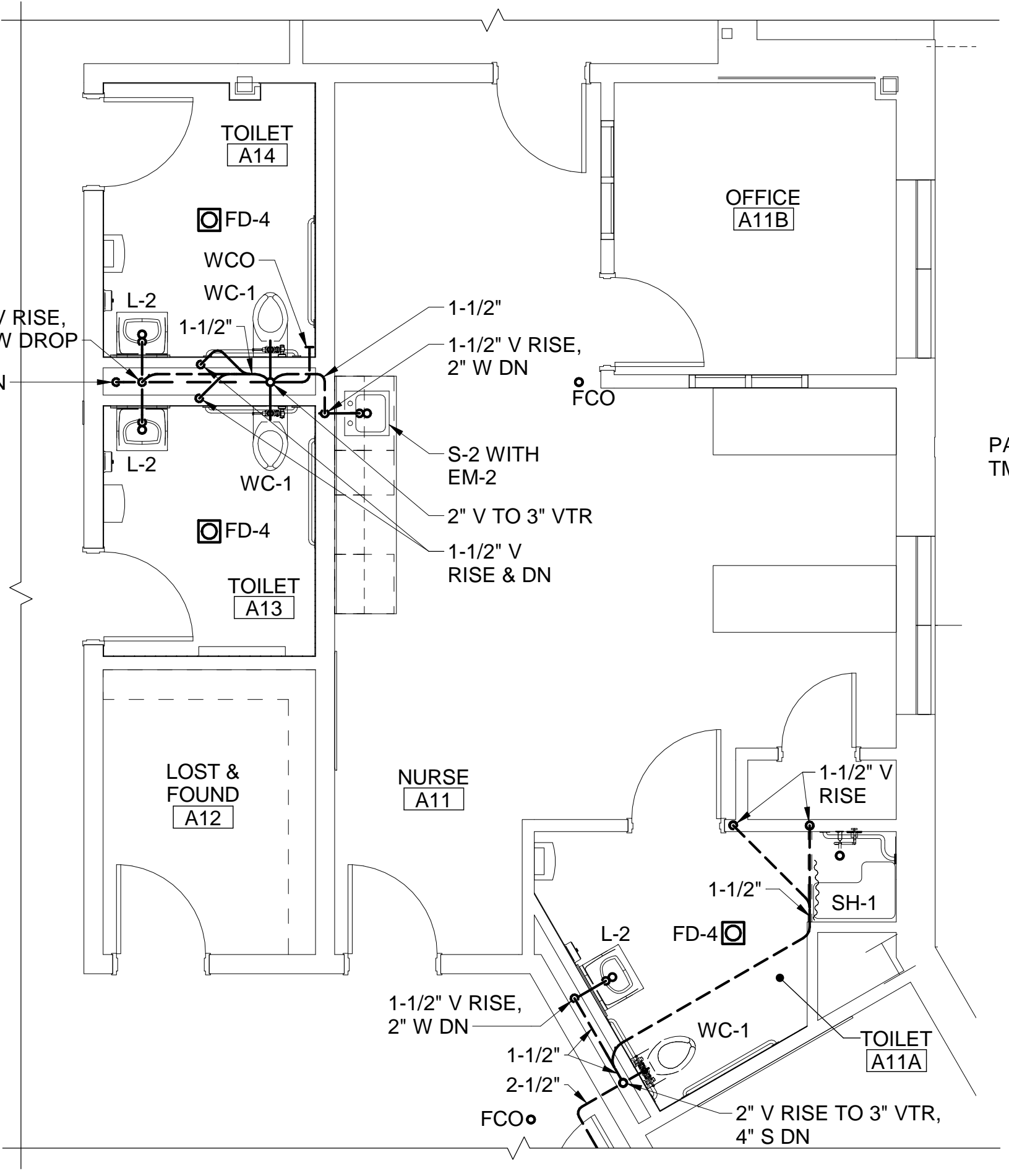
2 ROOMS A31, A32, A33 FIRST FLOOR WATER SUPPLY PART PLAN
P-104 P-401 SCALE: 1/4" = 1'-0"



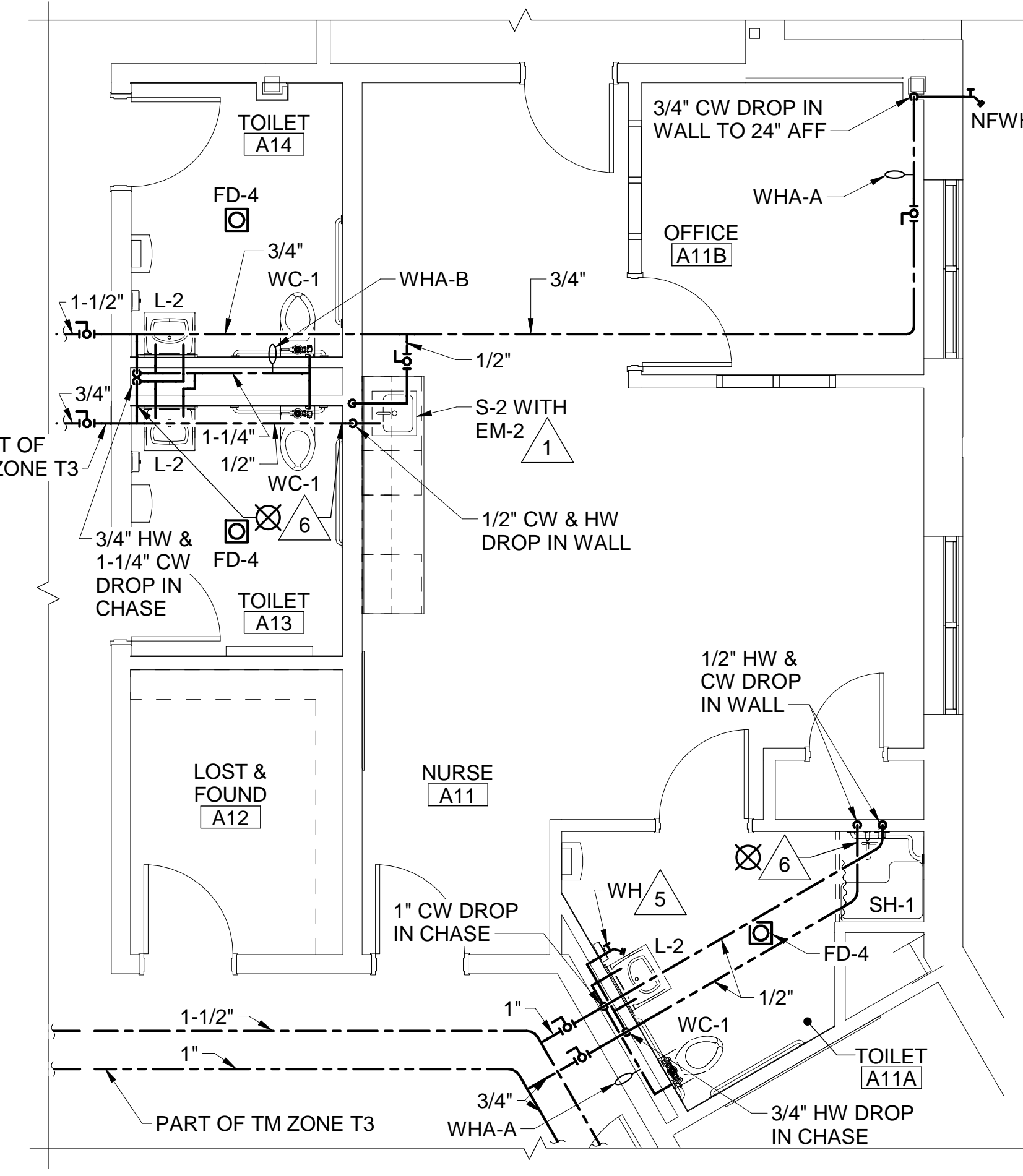
3 ROOMS A26, A27 FIRST FLOOR SANITARY PART PLAN
P-104 P-401 SCALE: 1/4" = 1'-0"



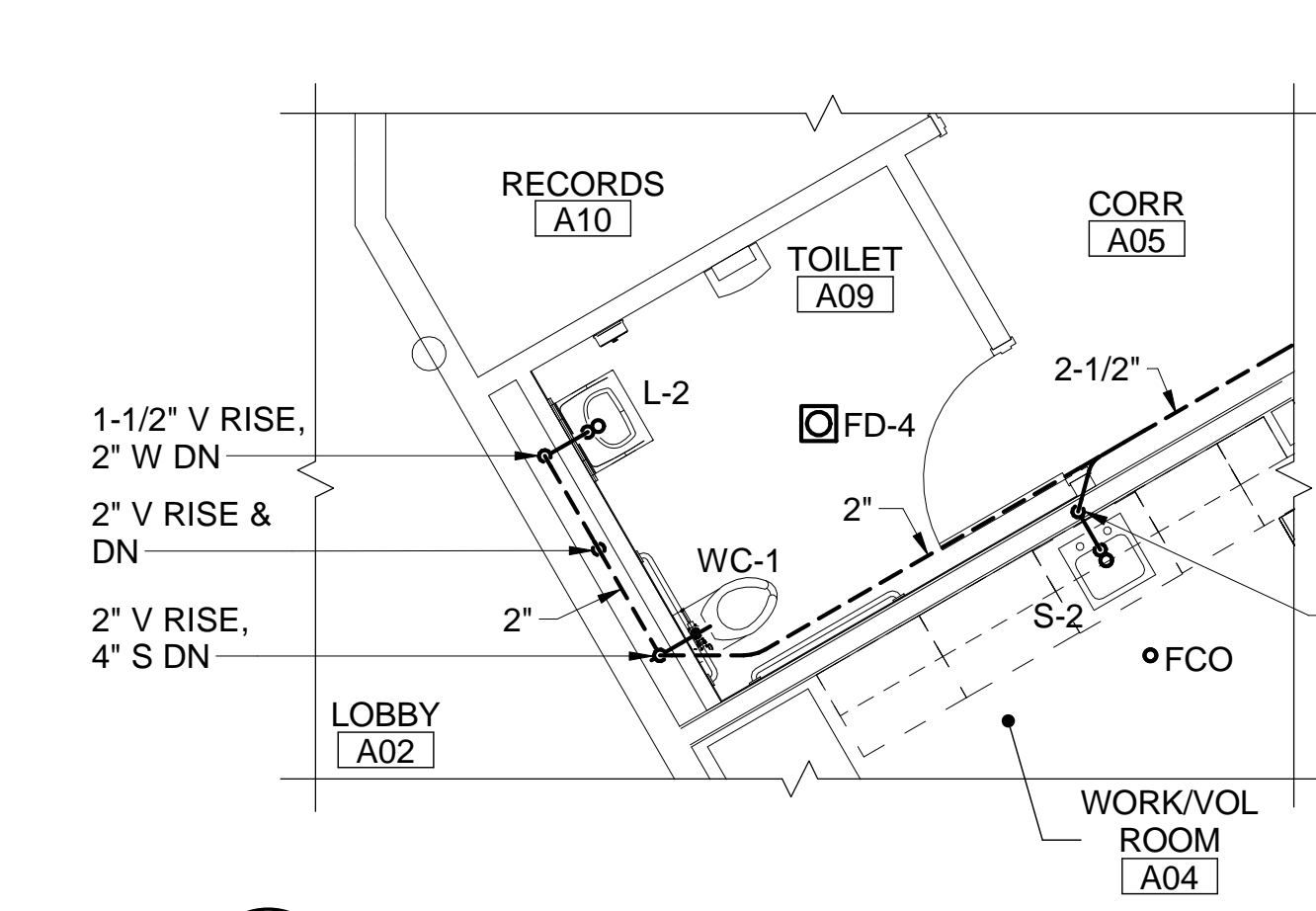
4 ROOMS A26, A27 FIRST FLOOR WATER SUPPLY PART PLAN
P-104 P-401 SCALE: 1/4" = 1'-0"



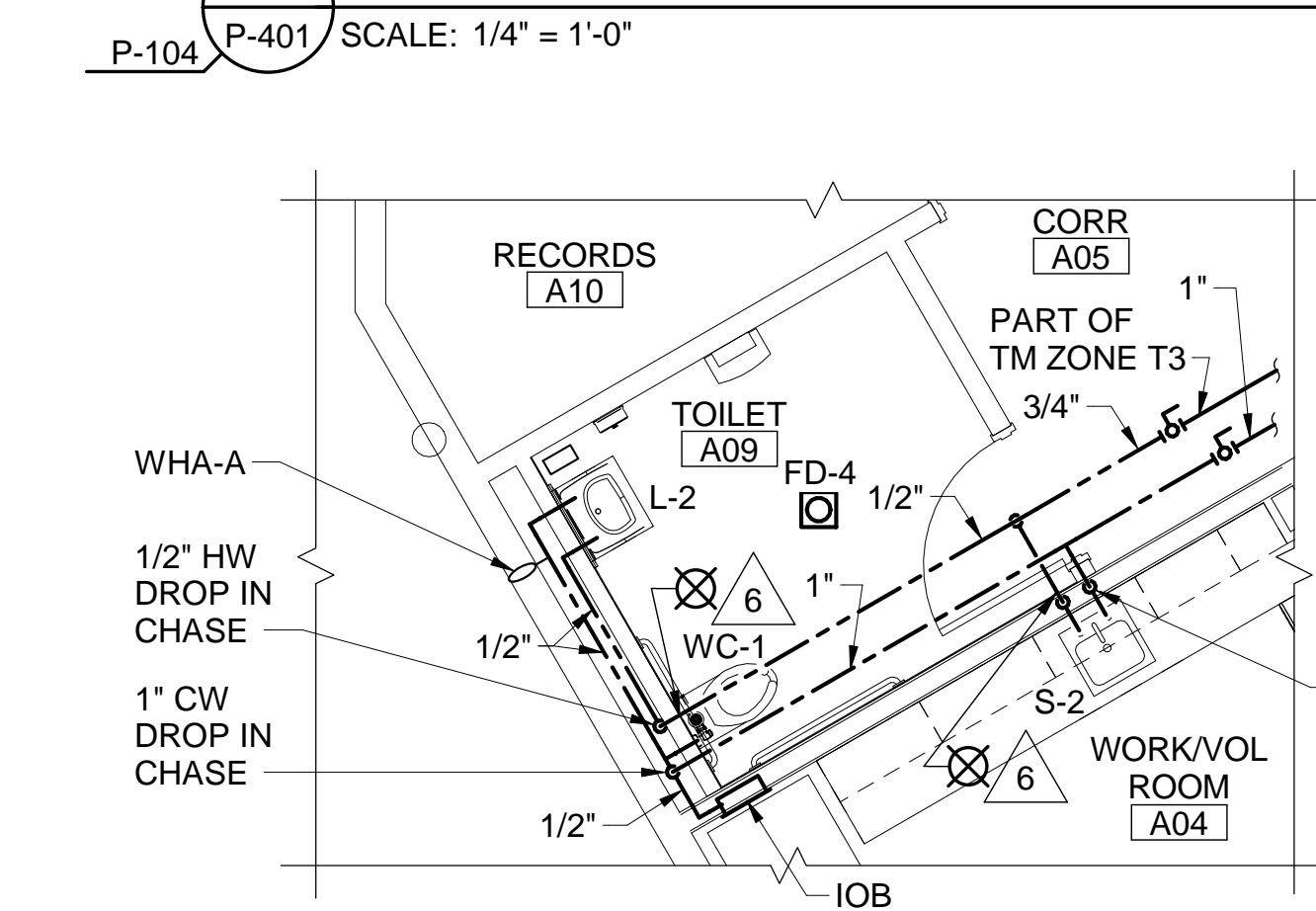
5 TOILET ROOM A11A AND A14 SANITARY PART PLAN
P-104 P-401 SCALE: 1/4" = 1'-0"



6 TOILET ROOM A11A AND A14 WATER SUPPLY PART PLAN
P-104 P-401 SCALE: 1/4" = 1'-0"



7 TOILET ROOM A09 SANITARY PART PLAN
P-104 P-401 SCALE: 1/4" = 1'-0"



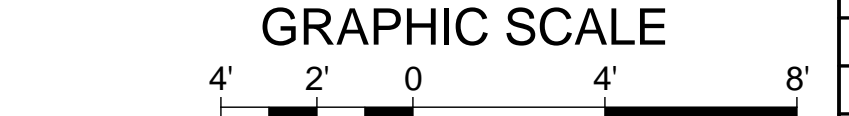
8 TOILET ROOM A09 WATER SUPPLY PART PLAN
P-104 P-401 SCALE: 1/4" = 1'-0"

DRAWING KEYNOTES

1. INSTALL SWING-DOWN EMERGENCY EYEWASH (EM-2) ON SINK REAR DECK TO RIGHT OF FAUCET. MOUNT EMERGENCY EYEWASH TEMPERING VALVE (EMV-2) BELOW COUNTERTOP AND BEHIND SINK SKIRT BOARD. EXTEND 1/2" HW AND 1/2" CW FROM SINK VALVES TO EMV-2 AND 1/2" TEMPERED WATER LINE FROM EMV-2 TO EM-2 INLETS.
2. DROP PIPE ALONG WALL FROM UNDERSIDE OF HIGH ROOF TO ADJACENT FIRST FLOOR CEILING. PROVIDE FLEXIBLE EXPANSION LOOP IN VERTICAL NEAR PIPING LOW POINT FOR PENETRATION OF BUILDING EXPANSION LOOP.
3. EXTEND 3/4" HW IN WALL TO NARROW WALL WH INSTALLED AT 12" AFF TO CENTERLINE, ACCESSIBLE WITH COUNTERTOP SKIRT BOARD INSTALLED, BUT BELOW COUNTER.
4. PROVIDE TWENTY-SIX 1/2" TP IN PEX DOWN IN WALL FROM RECESSED TRAP PRIMER ASSEMBLY TPA-1.
5. EXTEND 3/4" HW IN CHASE TO NARROW WALL WH INSTALLED AT 12" AFF TO CENTERLINE AND BELOW WALL HUNG LAVATORY.
6. TERMINATE TEMPERATURE MAINTENANCE CABLE AT WALL PENETRATION.

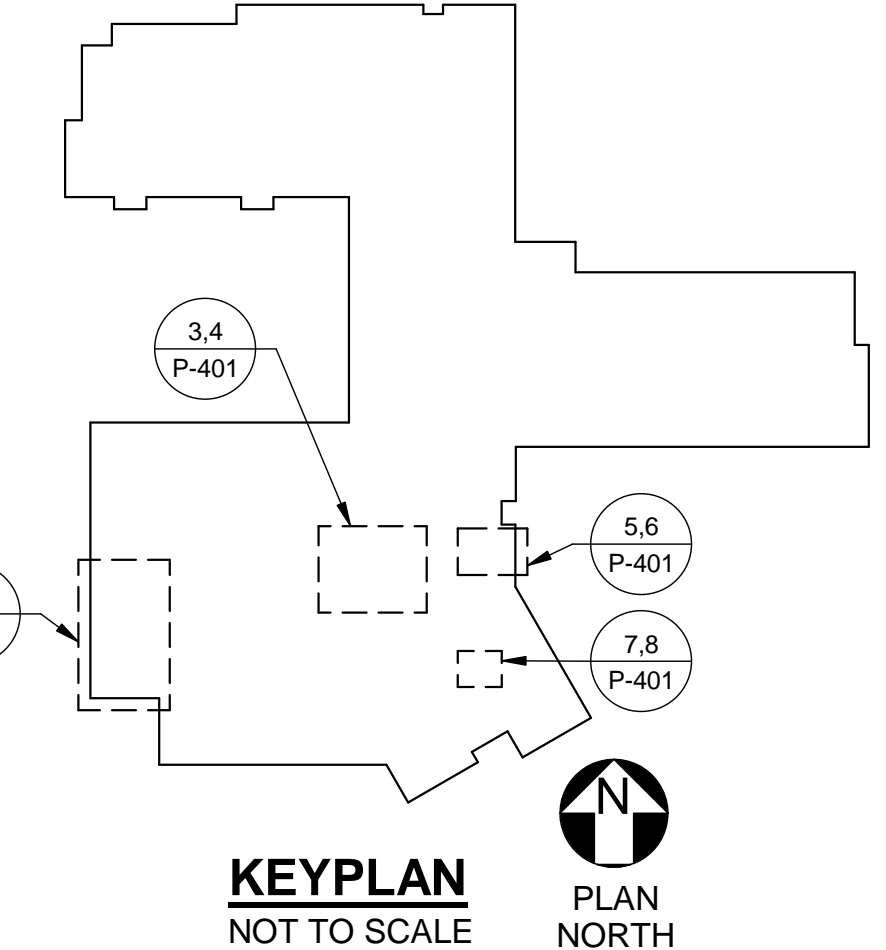
DRAWING NOTES

1. REFER TO GENERAL NOTES ON P-001 FOR REQUIRED PIPE SLOPES.
2. FIRST FLOOR FINISHED FLOOR ELEVATION IS 68.0' UNLESS OTHERWISE INDICATED.
3. FOR FLOOR AND PIPE PENETRATION DETAILS, REFER TO SHEET P-501.
4. FOR HANGER AND SUPPORT DETAILS, REFER TO SHEET P-501.
5. FOR PROJECT PHASING, MOSTLY RELATED TO SITE UTILITY WORK, REFER TO CIVIL SHEETS CP101, CU101 AND CU102.



CHECK GRAPHIC SCALE BEFORE USING

SHEET HAS BEEN RE-ISSUED AS PART OF ADDENDUM #1, DATED 04/04/17. MISSING PIPE SIZES AND TEMPERATURE MAINTENANCE ZONES HAVE BEEN PROVIDED THROUGHOUT.



		<p>STATE OF MAINE PUBLIC SCHOOL PROJECT</p> <p>TITLE: PORTLAND PUBLIC SCHOOLS NEW FRED P. HALL ELEMENTARY SCHOOL LOCATION: 23 ORONO ROAD, PORTLAND, ME TITLE THIS DRAWING: ENLARGED PLUMBING PART PLANS 1</p>	
<p>1 4/4/17</p>	<p>ADDENDUM #1</p>	<p>MSA</p>	<p>CHECK BY: MSA</p>
<p>NO DATE</p>	<p>DESCRIPTION</p>	<p>BY</p>	<p>NO.</p>
<p>REVISIONS</p>	<p>DATE</p>	<p>04/04/17</p>	<p>267 OF 312</p>