

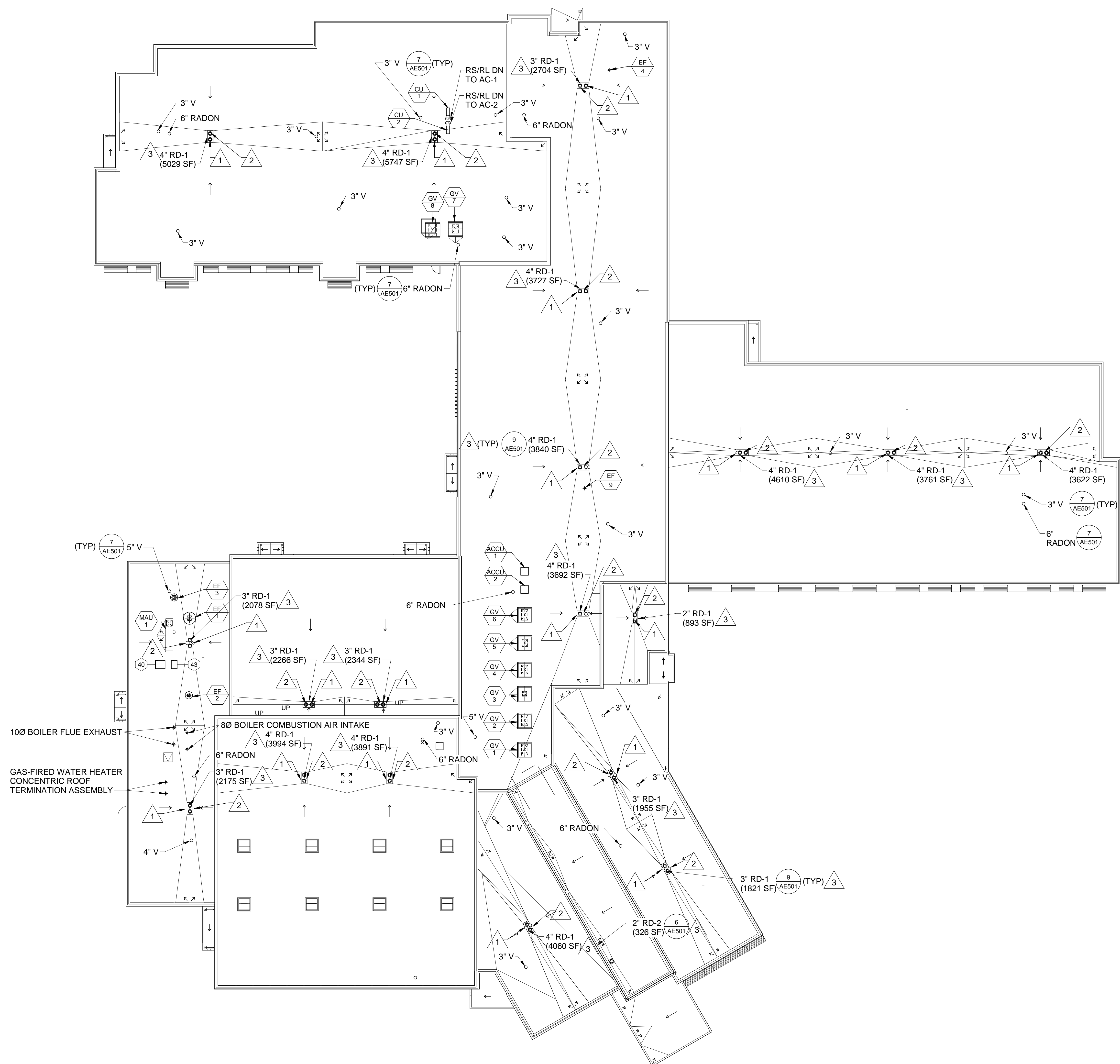
DRAWING NOTES

- REFER TO GENERAL NOTES ON P-001 FOR REQUIRED PIPE SLOPES.
- FIRST FLOOR FINISHED FLOOR ELEVATION IS 68.0' UNLESS OTHERWISE INDICATED.
- FOR FLOOR AND PIPE PENETRATION DETAILS, REFER TO SHEET P-501.
- FOR HANGER AND SUPPORT DETAILS, REFER TO SHEET P-501.
- FOR PROJECT PHASING, MOSTLY RELATED TO SITE UTILITY WORK, REFER TO CIVIL SHEETS CP101, CU101 AND CU102.

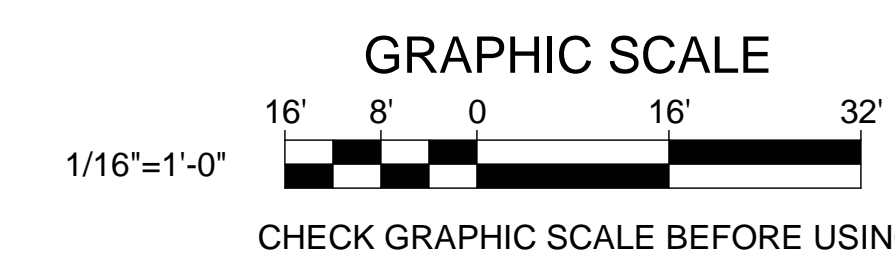
DRAWING KEYNOTES

- ROOF DRAIN FOR PRIMARY STORM DRAINAGE SYSTEM.
- ROOF DRAIN FOR SECONDARY STORM DRAINAGE SYSTEM.
- DURING PHASE I CONSTRUCTION AND UNTIL THE COMPLETION OF PHASE 2 SITE UTILITY WORK, SECONDARY ROOF DRAINAGE SYSTEM SHALL OPERATE AS THE PRIMARY DRAINAGE SYSTEM. TO PREVENT STORM DRAINAGE FROM ENTERING THE PRIMARY DRAINAGE SYSTEM, PROVIDE A CONTINUOUS SQUARE OF ROOFING EPDM MEMBRANE OVER THE ROOF OPENING AND TEMPORARILY LOCK IN PLACE USING THE ROOF DRAIN DOME AND/OR CLAMPING RING. WHEN PHASE 2 WORK IS COMPLETE, AND SITE STORM DRAINAGE PIPING INSTALLATION IS COMPLETE, REMOVE TEMPORARY MEMBRANE AND RE-INSTALL DOME AND CLAMPING RING.

SHEET HAS BEEN RE-ISSUED AS PART OF ADDENDUM #1, DATED 04/04/17. MISSING RADON AND SANITARY VENT PIPE SIZES AND LOCATIONS HAVE BEEN ADDED.



1 ROOF PLUMBING PLAN
P-108 SCALE: 1/16" = 1'-0"



		STATE OF MAINE PUBLIC SCHOOL PROJECT TITLE PORTLAND PUBLIC SCHOOLS NEW FRED P. HALL ELEMENTARY SCHOOL LOCATION 23 ORONO ROAD, PORTLAND, ME TITLE THIS DWG. ROOF PLUMBING PLAN	
		DRAWN BY: Author CHECK BY: MSA	OAK POINT ASSOCIATES P-108 SHEET NO. 266 OF 312
NO. DATE 1 4/4/17	DESCRIPTION ADDENDUM #1	BY MSA	REVISIONS DATE 04/04/17