

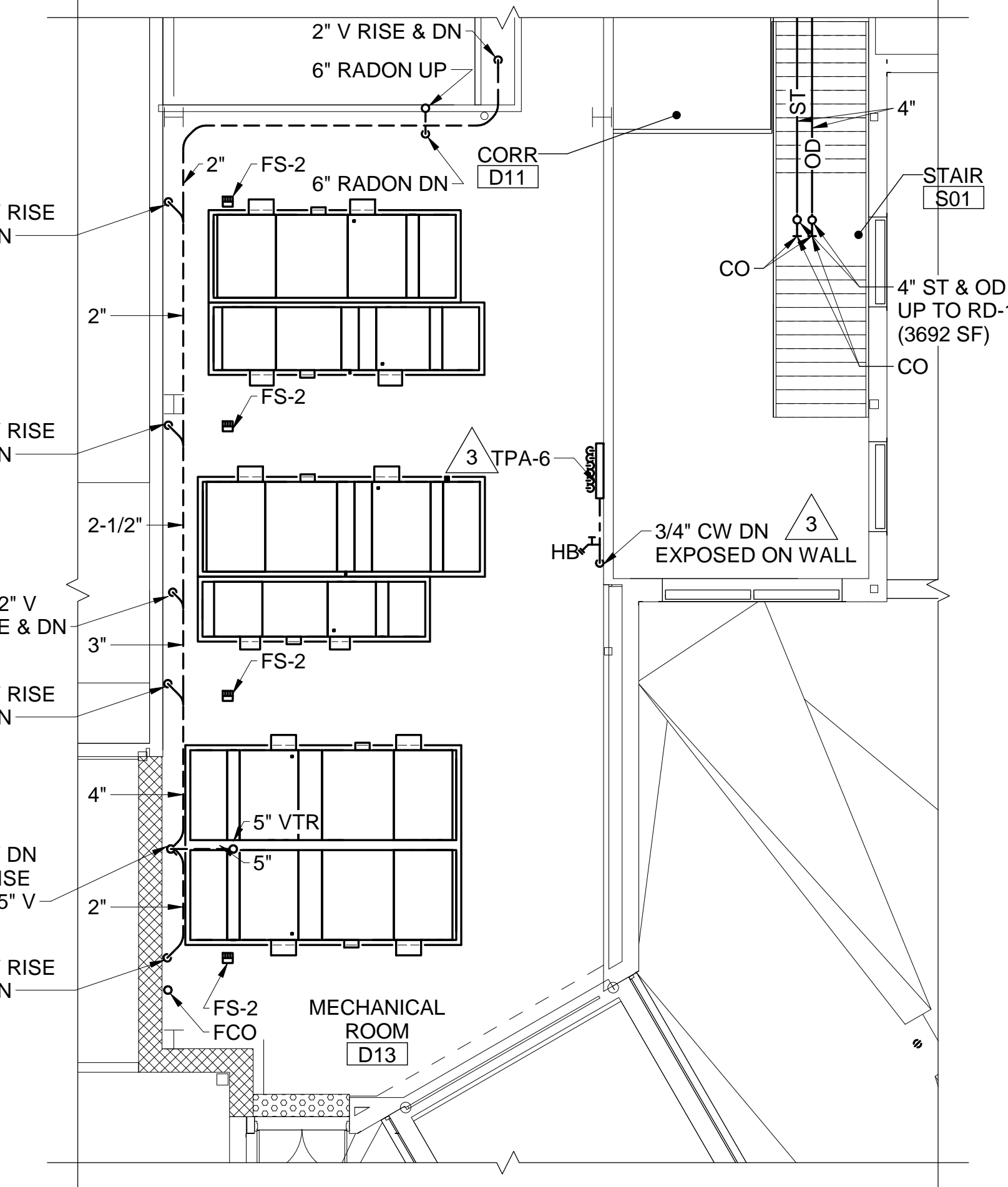
1 SECOND FLOOR PLUMBING PART PLAN
 P-107 SCALE: 1/8" = 1'-0"

DRAWING NOTES

1. REFER TO GENERAL NOTES ON P-001 FOR REQUIRED PIPE SLOPES.
2. FIRST FLOOR FINISHED FLOOR ELEVATION IS 68.0' UNLESS OTHERWISE INDICATED.
3. FOR FLOOR AND PIPE PENETRATION DETAILS, REFER TO SHEET P-501.
4. FOR HANGER AND SUPPORT DETAILS, REFER TO SHEET P-501.
5. FOR PROJECT PHASING, MOSTLY RELATED TO SITE UTILITY WORK, REFER TO CIVIL SHEETS CP101, CU101 AND CU102.
6. INSTALL STORM DRAINAGE PIPING INSIDE BUILDING AT A PITCH OF 1/4" FT UNLESS OTHERWISE NOTED.

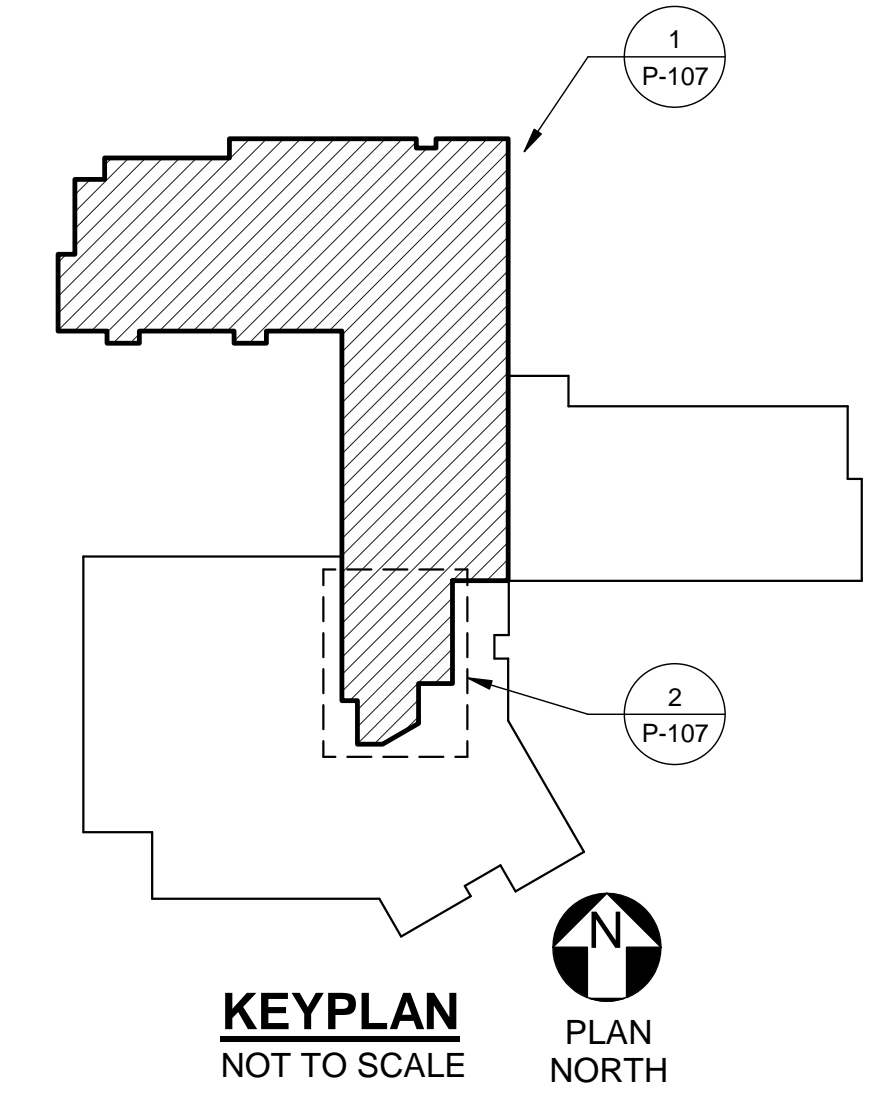
DRAWING KEYNOTES

1. INSTALL PIPE IN SOFFIT FOR MOVABLE PARTITION. REFER TO ARCHITECTURAL SHEETS.
2. PIPING RISE OR DROP IN KNEE WALL BELOW COUNTER TO CLEAR BEAM IN WALL BELOW.
3. PROVIDE SIX 1/2" TP IN COPPER DN EXPOSED ON WALL FROM TPA-6.

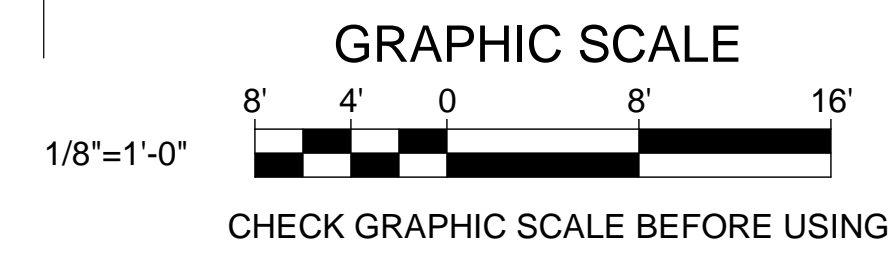


2 SECOND FLOOR MECH ROOM D12 PLUMBING PART PLAN
 P-107 SCALE: 1/8" = 1'-0"

SHEET HAS BEEN RE-ISSUED AS PART OF ADDENDUM #1, DATED 04/04/17. MISSING PIPE SIZES HAVE BEEN PROVIDED THROUGHOUT.



KEYPLAN
 NOT TO SCALE
 PLAN NORTH



STATE OF MAINE PUBLIC SCHOOL PROJECT			DRAWN BY: Author CHECK BY: MSA DATE: 04/04/17
TITLE: PORTLAND PUBLIC SCHOOLS NEW FRED P. HALL ELEMENTARY SCHOOL LOCATION: 23 ORONO ROAD, PORTLAND, ME TITLE THIS DWG: SECOND FLOOR PLUMBING PART PLANS			
NO.	DATE	DESCRIPTION	BY
1	4/4/17	ADDENDUM #1	MSA
REVISIONS		DATE	04/04/17