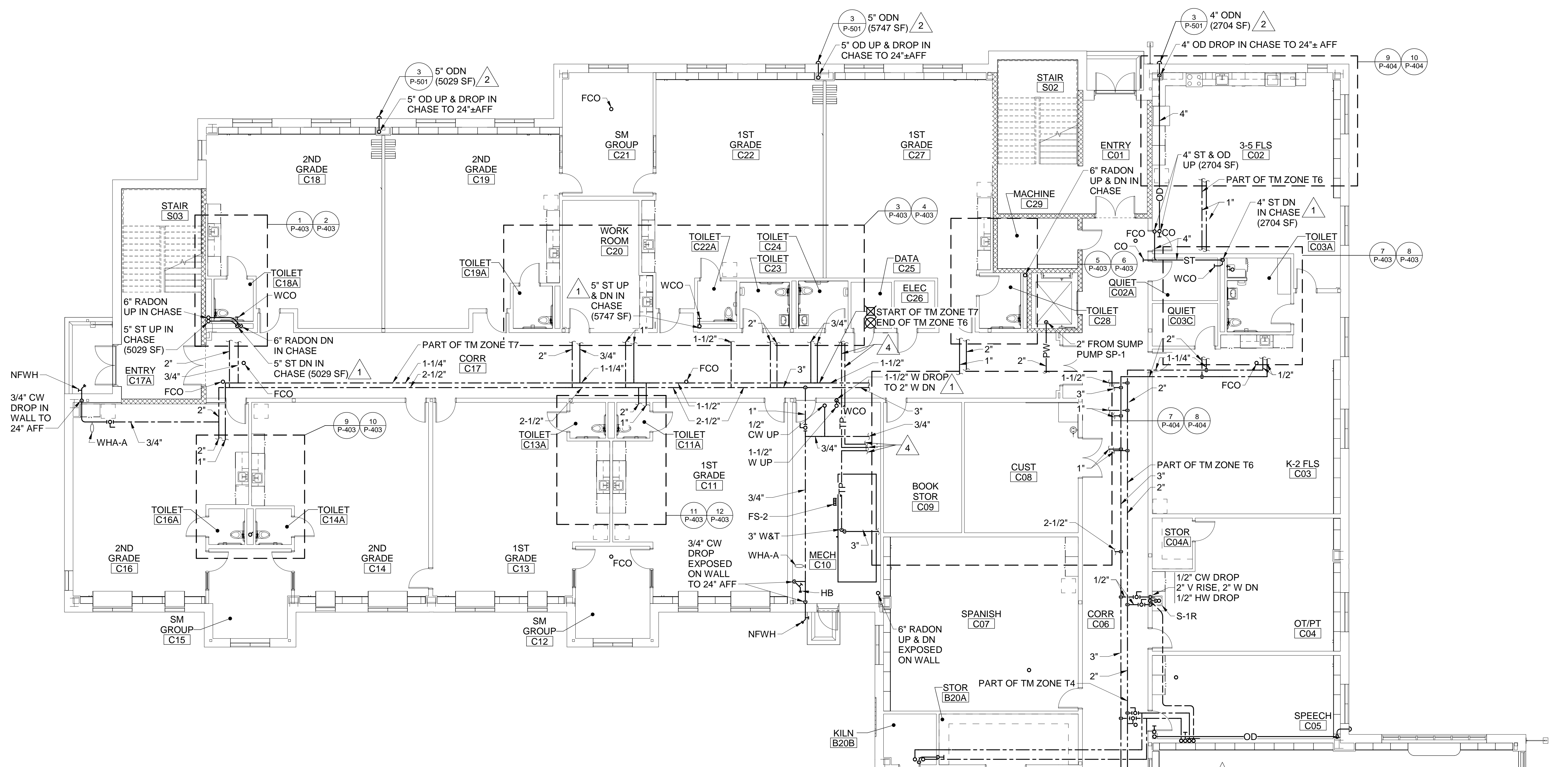


### DRAWING NOTES

1. REFER TO GENERAL NOTES ON P-001 FOR REQUIRED PIPE SLOPES.
2. FIRST FLOOR FINISHED FLOOR ELEVATION IS 68.0' UNLESS OTHERWISE INDICATED.
3. FOR FLOOR AND PIPE PENETRATION DETAILS, REFER TO SHEET P-501.
4. FOR HANGER AND SUPPORT DETAILS, REFER TO SHEET P-501.
5. FOR PROJECT PHASING, MOSTLY RELATED TO SITE UTILITY WORK, REFER TO CIVIL SHEETS CP101, CU101 AND CU102.
6. INSTALL STORM DRAINAGE PIPING INSIDE BUILDING AT A PITCH OF 1/4"/FT UNLESS OTHERWISE NOTED.

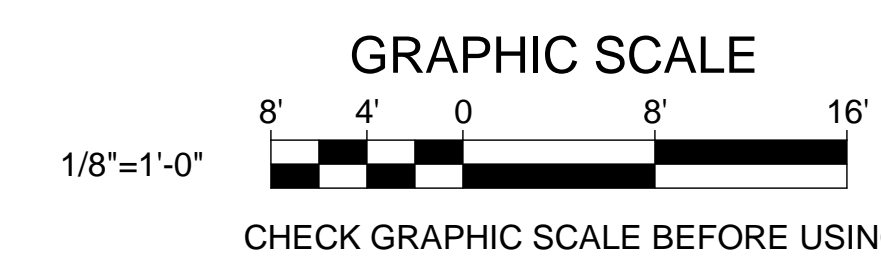
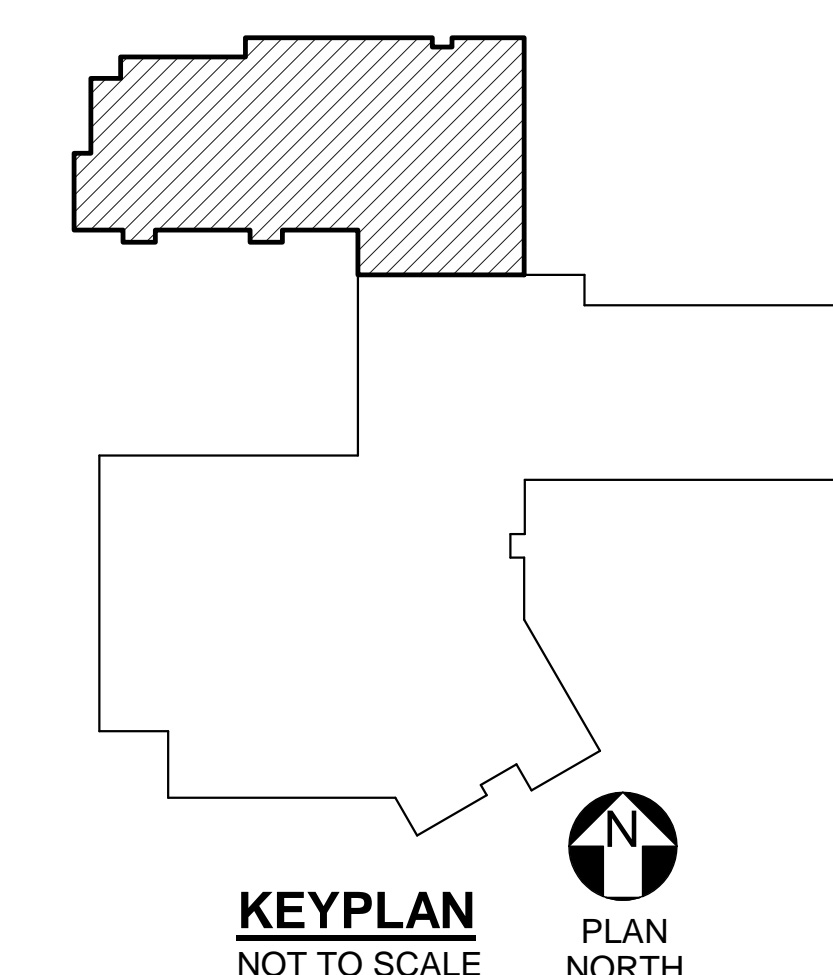
### DRAWING KEYNOTES

- 1 PROVIDE WALL CLEANOUT AT ±12" AFF AT BASE OF EACH STORM DRAIN OR SANITARY RISER.
- 2 PROVIDE TEMPORARY SPLASH BLOCK AT GRADE FOR OVERFLOW DRAIN NOZZLE DURING PHASE 1 CONSTRUCTION WHEN SECONDARY DRAINAGE SYSTEM SHALL ACT AS PRIMARY SYSTEM. REFER TO SHEETS CP101, CU101 AND CU102. REMOVE SPLASH BLOCK AT THE END OF PHASE 2 WORK.
- 3 INSTALL PIPE IN SOFFIT ALONG WALL. REFER TO ARCHITECTURAL SHEETS.
- 4 1/2" TP IN COPPER ABOVE CEILING OR AT STRUCTURE ABOVE.
- 5 TERMINATE TEMPERATURE MAINTENANCE CABLE AT WALL PENETRATION.



**1 FIRST FLOOR PLUMBING PART PLAN C**  
P-106 SCALE: 1/8" = 1'-0"

SHEET HAS BEEN RE-ISSUED AS PART OF ADDENDUM #1, DATED 04/04/17. MISSING PIPE SIZES AND TEMPERATURE MAINTENANCE ZONES HAVE BEEN PROVIDED THROUGHOUT.



		<b>STATE OF MAINE</b> <b>PUBLIC SCHOOL PROJECT</b> TITLE: PORTLAND PUBLIC SCHOOLS NEW FRED P. HALL ELEMENTARY SCHOOL LOCATION: 23 ORONO ROAD, PORTLAND, ME TITLE THIS DWG: FIRST FLOOR PLUMBING PART PLAN C	
DRAWN BY: Author CHECK BY: MSA BY: NO. DATE: 04/04/17	MSA MSA NO. DATE: 04/04/17	<b>OAK POINT ASSOCIATES</b> P-106 SHEET NO. 264 OF 312	231 Main Street, Biddeford, Maine 04005 207.283.9191