

**DRAWING NOTES**

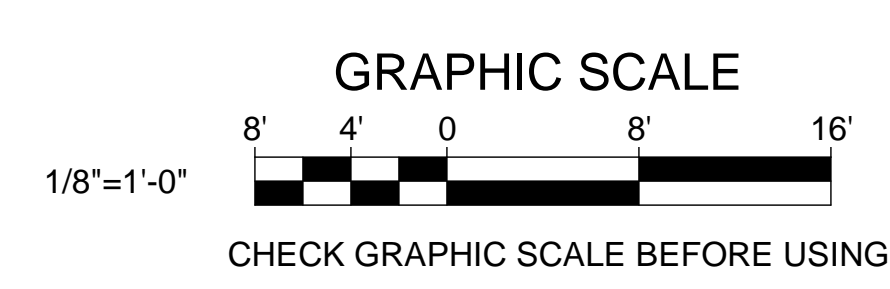
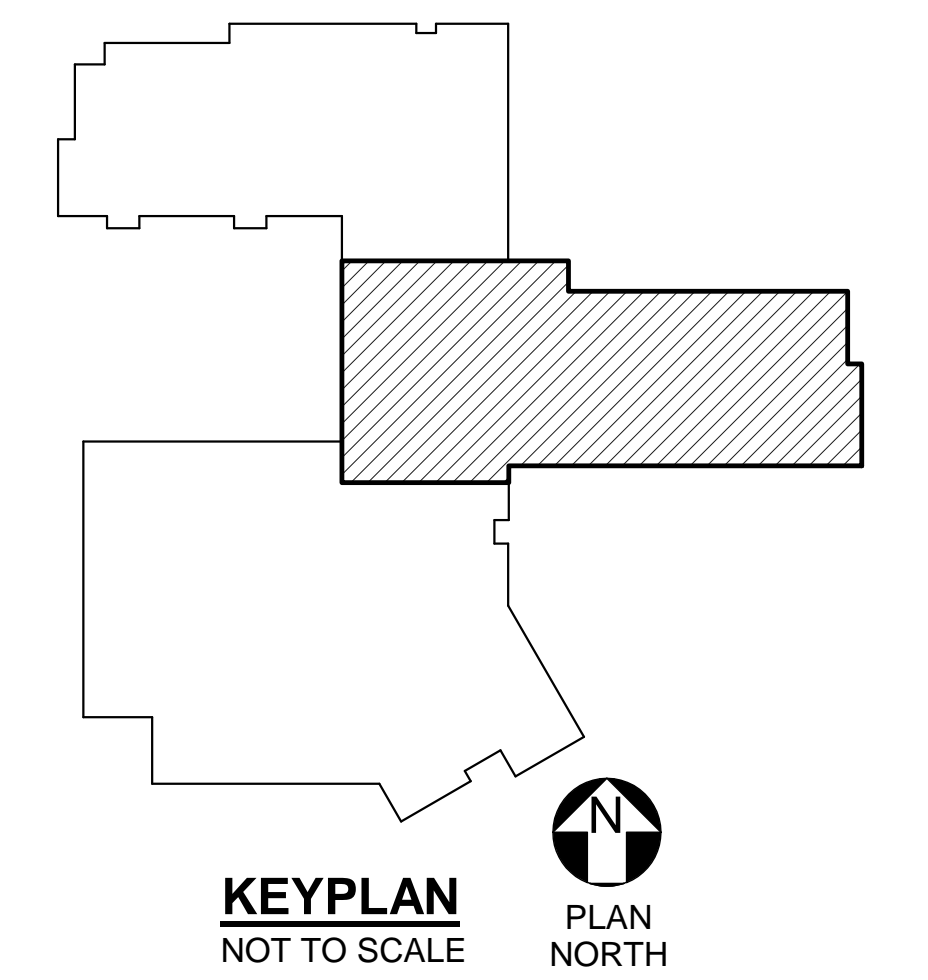
- REFER TO GENERAL NOTES ON P-001 FOR REQUIRED PIPE SLOPES.
- FIRST FLOOR FINISHED FLOOR ELEVATION IS 68.0' UNLESS OTHERWISE INDICATED.
- FOR FLOOR AND PIPE PENETRATION DETAILS, REFER TO SHEET P-501.
- FOR HANGER AND SUPPORT DETAILS, REFER TO SHEET P-501.
- FOR PROJECT PHASING, MOSTLY RELATED TO SITE UTILITY WORK, REFER TO CIVIL SHEETS CP101, CU101 AND CU102.
- INSTALL STORM DRAINAGE PIPING INSIDE BUILDING AT PITCH OF 1/4"/FT UNLESS OTHERWISE NOTED.

**DRAWING KEYNOTES**

- PROVIDE WALL CLEANOUT AT 12" AFF AT BASE OF EACH STORM DRAIN OR SANITARY RISER.
- PROVIDE CW, W, & V PIPING FOR FUTURE DRINKING FOUNTAIN. CAP CW & W IN WALL.
- PROVIDE TEMPORARY SPLASH BLOCK AT GRADE FOR OVERFLOW DRAIN NOZZLE DURING PHASE I CONSTRUCTION WHEN SECONDARY DRAINAGE SYSTEM SHALL ACT AS PRIMARY SYSTEM. REFER TO SHEETS CP101, CU101, AND CU102. REMOVE SPLASH BLOCK AT THE END OF PHASE II WORK.
- INSTALL PIPE IN SOFFIT ALONG WALL. REFER TO ARCHITECTURAL SHEETS.
- 1/2" TP IN COPPER TUBING ABOVE CEILING FROM TRAP PRIMER ASSEMBLY.
- TERMINATE TEMPERATURE MAINTENANCE CABLE AT WALL PENETRATION.
- TERMINATE TEMPERATURE MAINTENANCE CABLE AT FLOOR PENETRATION ABOVE.

SHEET HAS BEEN RE-ISSUED AS PART OF ADDENDUM #1, DATED 04/04/17. MISSING PIPE SIZES AND TEMPERATURE MAINTENANCE ZONES HAVE BEEN PROVIDED THROUGHOUT.

**1 FIRST FLOOR PLUMBING PART PLAN B**  
P-105 SCALE: 1/8" = 1'-0"



STATE OF MAINE PUBLIC SCHOOL PROJECT		DRAWN BY: RML		OAK POINT ASSOCIATES	
PORTLAND PUBLIC SCHOOLS NEW FRED P. HALL ELEMENTARY SCHOOL		CHECK BY: MSA		P-105	
LOCATION: 23 ORONO ROAD, PORTLAND, ME		DATE: 04/04/17		SHEET NO.	
TITLE THIS DWG: FIRST FLOOR PLUMBING PART PLAN B		REVISIONS		263 OF 312	