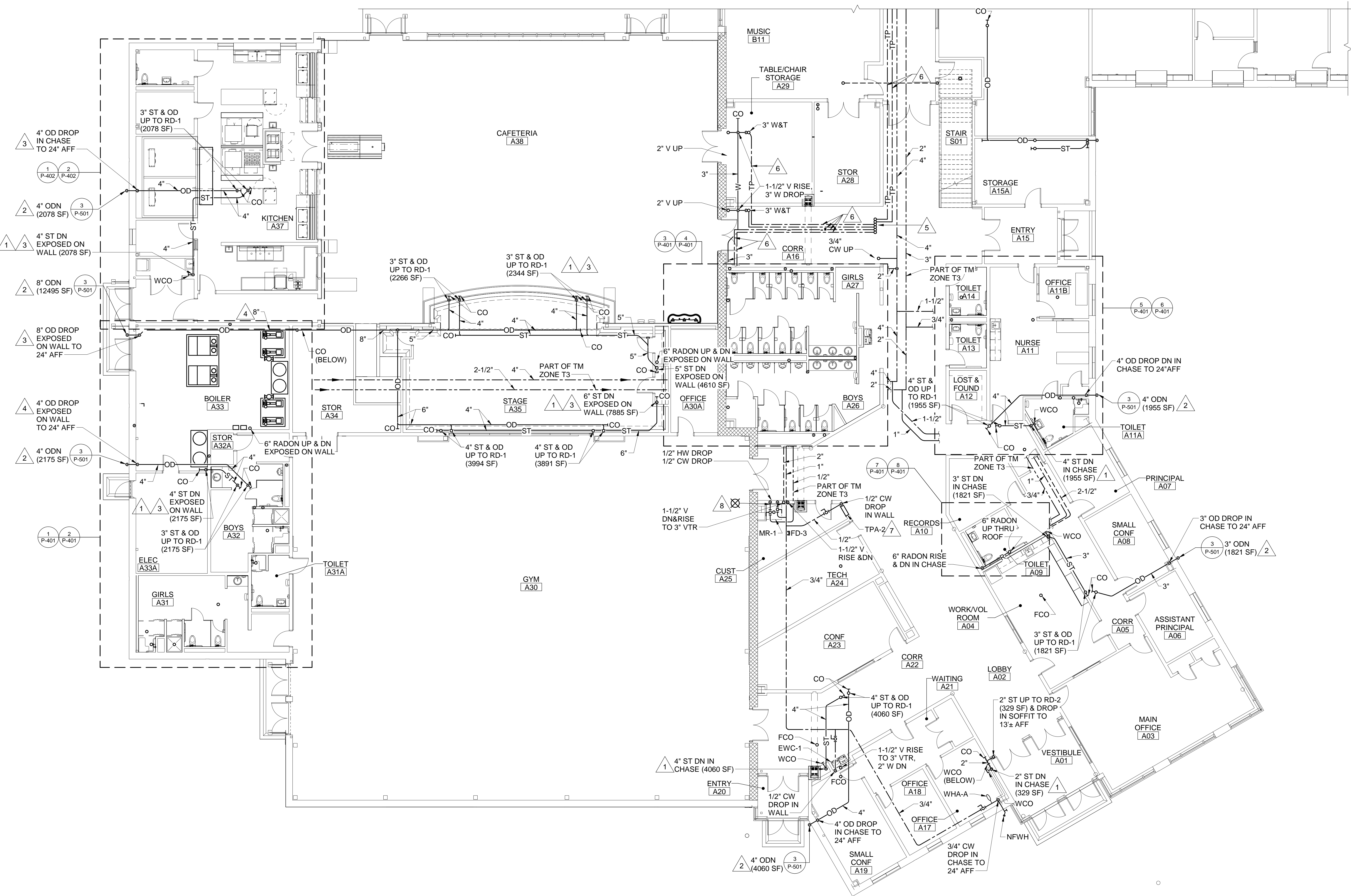


DRAWING NOTES

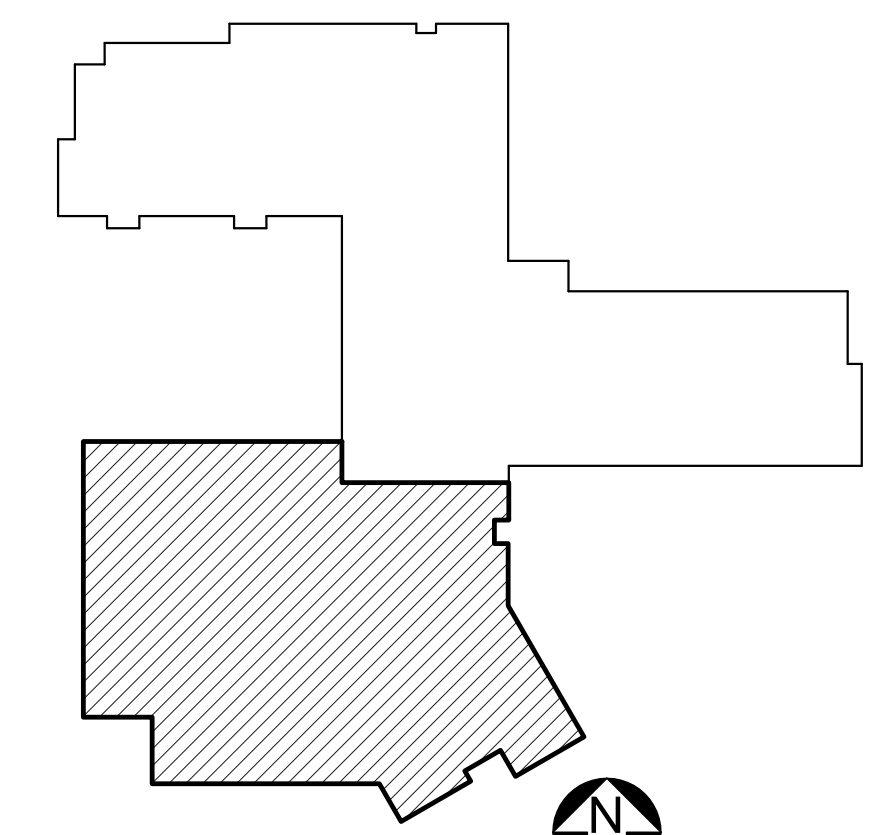
1. REFER TO GENERAL NOTES ON P-001 FOR REQUIRED PIPE SLOPES.
2. FIRST FLOOR FINISHED FLOOR ELEVATION IS 68.0' UNLESS OTHERWISE INDICATED.
3. FOR FLOOR AND PIPE PENETRATION DETAILS, REFER TO SHEET P-501.
4. FOR HANGER AND SUPPORT DETAILS, REFER TO SHEET P-501.
5. FOR PROJECT PHASING, MOSTLY RELATED TO SITE UTILITY WORK, REFER TO CIVIL SHEETS CP101, CU101 AND CU102.
6. INSTALL STORM DRAINAGE PIPING INSIDE BUILDING AT A PITCH 1/4"/FT UNLESS OTHERWISE NOTED.

DRAWING KEYNOTES

1. PROVIDE WALL CLEANOUT AT 12"± AFF AT BASE OF EACH STORM DRAIN OR SANITARY RISER.
2. PROVIDE TEMPORARY SPLASH BLOCK AT GRADE FOR OVER FLOW DRAIN NOZZLE DURING PHASE I CONSTRUCTION WHEN SECONDARY DRAINAGE SYSTEM SHALL ACT AS PRIMARY SYSTEM. REFER TO SHEETS CP101, CU101 AND CU102. REMOVE SPLASH BLOCK AT THE END OF PHASE II WORK.
3. PROVIDE PVC JACKET ON EXPOSED PIPE INSULATION TO 8' AFF.
4. INSTALL SECTION OF STORM DRAINAGE PIPING INDICATED AT A PITCH DOWN OF 1/8"/FT IN THE DIRECTION OF FLOW.
5. SIX 1/2" TP IN COPPER UP TO TPA-6 ABOVE.
6. 1/2" TP IN COPPER ABOVE CEILING FROM TRAP PRIMER ASSEMBLY.
7. PROVIDE NINE 1/2" TP IN PEX DOWN IN WALL FROM TPA-2.
8. TERMINATE TEMPERATURE MAINTENANCE CABLE AT WALL PENETRATION.

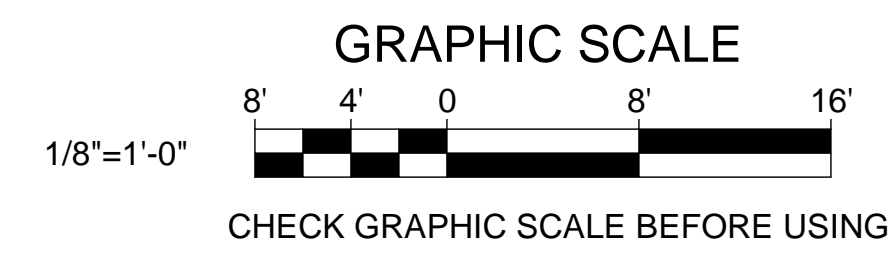


SHEET HAS BEEN RE-ISSUED AS PART OF ADDENDUM #1, DATED 04/04/17. MISSING PIPE SIZES AND TEMPERATURE MAINTENANCE ZONES HAVE BEEN PROVIDED THROUGHOUT.



KEYPLAN
NOT TO SCALE
PLAN NORTH

1 FIRST FLOOR PLUMBING PART PLAN A
SCALE: 1/8" = 1'-0"



STATE OF MAINE PUBLIC SCHOOL PROJECT		DRAWN BY: Author	
TITLE: PORTLAND PUBLIC SCHOOLS NEW FRED P. HALL ELEMENTARY SCHOOL		CHECK BY: MSA	
LOCATION: 23 ORONO ROAD, PORTLAND, ME		DATE: 04/04/17	
TITLE THIS DWG: FIRST FLOOR PLUMBING PART PLAN A		REVISIONS	
NO. DATE DESCRIPTION		BY NO.	
1 4/4/17 ADDENDUM #1		MSA	
2 4/4/17		MSA	
3 4/4/17		MSA	
4 4/4/17		MSA	
5 4/4/17		MSA	
6 4/4/17		MSA	
7 4/4/17		MSA	
8 4/4/17		MSA	
9 4/4/17		MSA	
10 4/4/17		MSA	
11 4/4/17		MSA	
12 4/4/17		MSA	
13 4/4/17		MSA	
14 4/4/17		MSA	
15 4/4/17		MSA	
16 4/4/17		MSA	
17 4/4/17		MSA	
18 4/4/17		MSA	
19 4/4/17		MSA	
20 4/4/17		MSA	
21 4/4/17		MSA	
22 4/4/17		MSA	
23 4/4/17		MSA	
24 4/4/17		MSA	
25 4/4/17		MSA	
26 4/4/17		MSA	
27 4/4/17		MSA	
28 4/4/17		MSA	
29 4/4/17		MSA	
30 4/4/17		MSA	
31 4/4/17		MSA	
32 4/4/17		MSA	
33 4/4/17		MSA	
34 4/4/17		MSA	
35 4/4/17		MSA	
36 4/4/17		MSA	
37 4/4/17		MSA	
38 4/4/17		MSA	
39 4/4/17		MSA	
40 4/4/17		MSA	
41 4/4/17		MSA	
42 4/4/17		MSA	
43 4/4/17		MSA	
44 4/4/17		MSA	
45 4/4/17		MSA	
46 4/4/17		MSA	
47 4/4/17		MSA	
48 4/4/17		MSA	
49 4/4/17		MSA	
50 4/4/17		MSA	
51 4/4/17		MSA	
52 4/4/17		MSA	
53 4/4/17		MSA	
54 4/4/17		MSA	
55 4/4/17		MSA	
56 4/4/17		MSA	
57 4/4/17		MSA	
58 4/4/17		MSA	
59 4/4/17		MSA	
60 4/4/17		MSA	
61 4/4/17		MSA	
62 4/4/17		MSA	
63 4/4/17		MSA	
64 4/4/17		MSA	
65 4/4/17		MSA	
66 4/4/17		MSA	
67 4/4/17		MSA	
68 4/4/17		MSA	
69 4/4/17		MSA	
70 4/4/17		MSA	
71 4/4/17		MSA	
72 4/4/17		MSA	
73 4/4/17		MSA	
74 4/4/17		MSA	
75 4/4/17		MSA	
76 4/4/17		MSA	
77 4/4/17		MSA	
78 4/4/17		MSA	
79 4/4/17		MSA	
80 4/4/17		MSA	
81 4/4/17		MSA	
82 4/4/17		MSA	
83 4/4/17		MSA	
84 4/4/17		MSA	
85 4/4/17		MSA	
86 4/4/17		MSA	
87 4/4/17		MSA	
88 4/4/17		MSA	
89 4/4/17		MSA	
90 4/4/17		MSA	
91 4/4/17		MSA	
92 4/4/17		MSA	
93 4/4/17		MSA	
94 4/4/17		MSA	
95 4/4/17		MSA	
96 4/4/17		MSA	
97 4/4/17		MSA	
98 4/4/17		MSA	
99 4/4/17		MSA	
100 4/4/17		MSA	