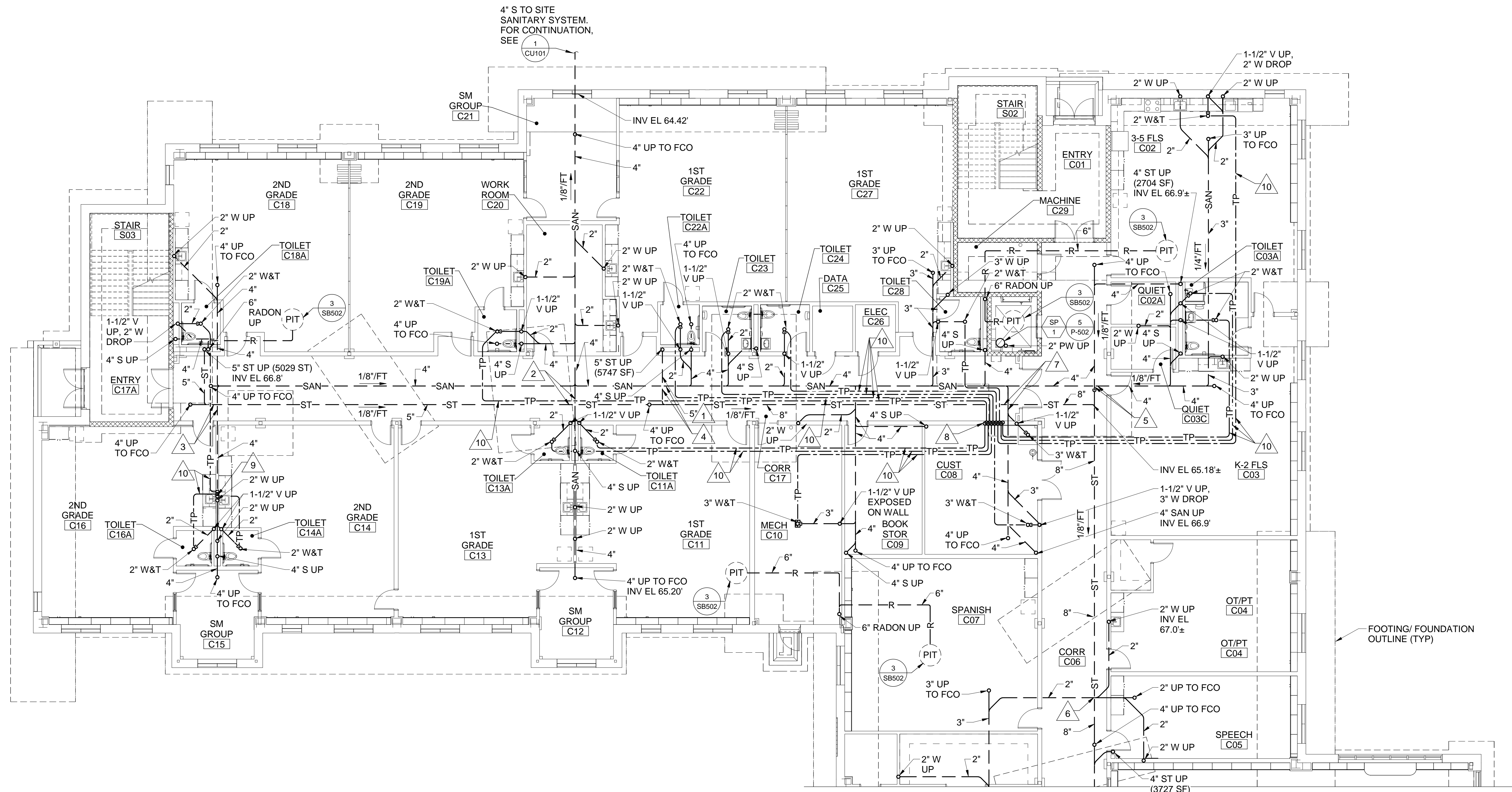


**DRAWING NOTES**

1. REFER TO GENERAL NOTES ON P-001 FOR REQUIRED PIPE SLOPES.
2. FIRST FLOOR FINISHED FLOOR ELEVATION IS 68.0' UNLESS OTHERWISE INDICATED.
3. FOR FLOOR AND PIPE PENETRATION DETAILS, REFER TO SHEET P-501.
4. FOR HANGER AND SUPPORT DETAILS, REFER TO SHEET P-501.
5. FOR PROJECT PHASING, MOSTLY RELATED TO SITE UTILITY WORK, REFER TO CIVIL SHEETS CP101, CU101 AND CU102.

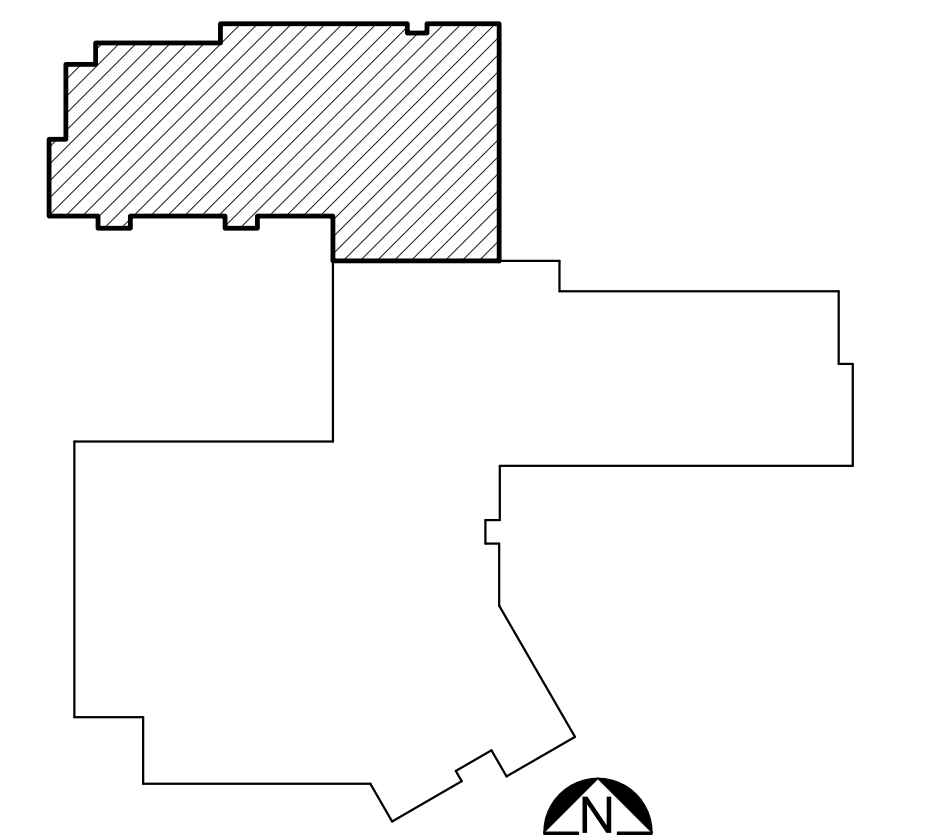
**DRAWING KEYNOTES**

1. INSTALL STORM DRAIN PIPING WITH A PITCH OF 1/4" PER FOOT DOWN IN THE DIRECTION OF FLOW.
2. AT UNDERSLAB PIPE CROSSING: 4" SAN INV EL 64.92±; 5" ST INV EL 66.11±.
3. AT UNDERSLAB PIPE CROSSING: 4" SAN INV EL 65.49±; ST INV EL 66.68±.
4. AT UNDERSLAB PIPE CROSSING: 4" SAN INV EL 65.02±; ST INV EL 66.01±.
5. AT UNDERSLAB PIPE CROSSING: 4" ST INV EL 66.6±; 4" SAN INV EL 65.72±.
6. AT UNDERSLAB PIPE CROSSING: 2" SAN INV EL 66.71±; 8" ST INV EL 64.66±.
7. AT UNDERSLAB PIPE CROSSING: 4" SAN INV EL 66.6±; 8" ST INV EL 65.32±.
8. TWELVE 1/2" TP IN PEX UP TO TRAP PRIMER ASSEMBLY TPA-4 IN WALL ABOVE.
9. THREE 1/2" TP IN PEX UP IN WALL TO TRAP PRIMER VALVE TPV-5 AT SINK ABOVE.
10. 1/2" TP IN PEX TUBING BELOW FLOOR FROM TRAP PRIMER ASSEMBLY OR VALVE.

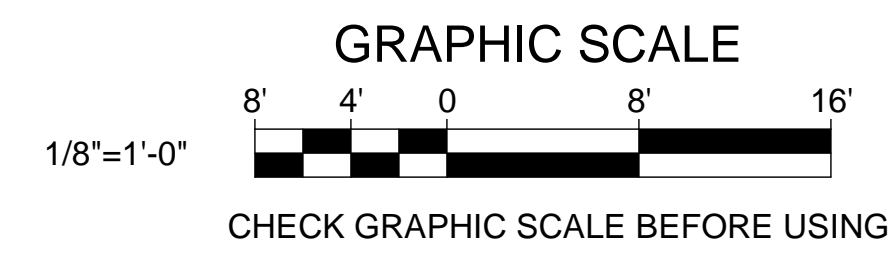


**1 UNDERSLAB PLUMBING PART PLAN C**  
P-103 SCALE: 1/8" = 1'-0"

SHEET HAS BEEN RE-ISSUED AS PART OF ADDENDUM #1, DATED 04/04/17. MISSING PIPE SIZES HAVE BEEN PROVIDED THROUGHOUT.



**KEYPLAN**  
NOT TO SCALE  
**PLAN**  
NORTH



		<b>STATE OF MAINE</b> <b>PUBLIC SCHOOL PROJECT</b> TITLE: PORTLAND PUBLIC SCHOOLS NEW FRED P. HALL ELEMENTARY SCHOOL LOCATION: 23 ORONO ROAD, PORTLAND, ME TITLE THIS DWG: UNDERSLAB PLUMBING PART PLAN C	
DRAWN BY: Author CHECK BY: MSA	DATE: 04/04/17	DRAWING NO: P-103 SHEET NO: 261 OF 312	OAK POINT ASSOCIATES 231 Main Street, Bethel, Maine 04915 207.253.9191