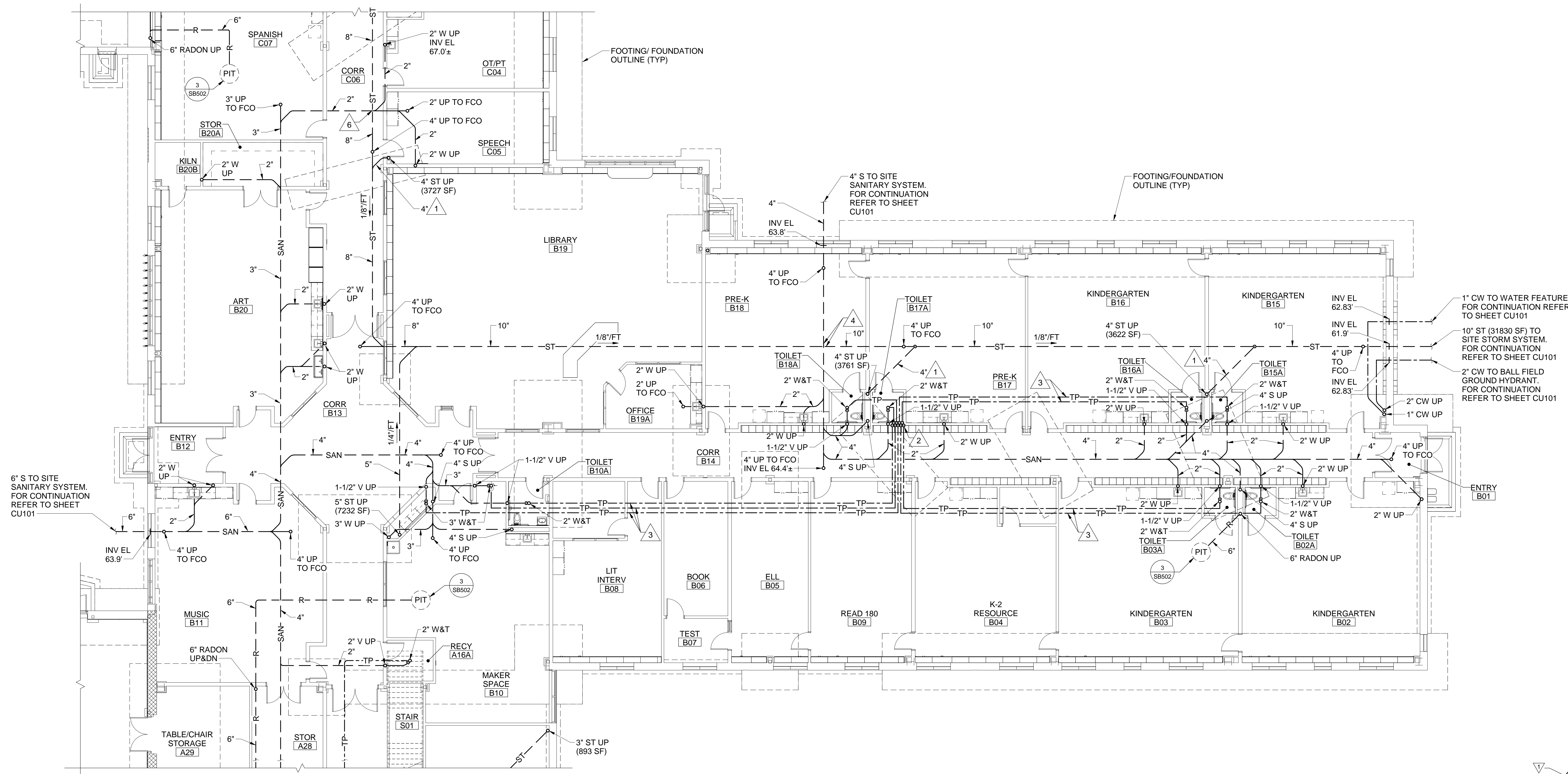


DRAWING NOTES

1. REFER TO GENERAL NOTES ON P-001 FOR REQUIRED PIPE SLOPES.
2. FIRST FLOOR FINISHED FLOOR ELEVATION IS 68.0' UNLESS OTHERWISE INDICATED.
3. FOR FLOOR AND PIPE PENETRATION DETAILS, REFER TO SHEET P-501.
4. FOR HANGER AND SUPPORT DETAILS, REFER TO SHEET P-501.
5. FOR PROJECT PHASING, MOSTLY RELATED TO SITE UTILITY WORK, REFER TO CIVIL SHEETS CP101, CU101 AND CU102.

DRAWING KEYNOTES

1. INSTALL STORM DRAINAGE PIPING WITH A PITCH OF 1/4"/FT DOWN IN THE DIRECTION OF FLOW.
2. NINE 1/2" TP IN PEX UP TO TRAP PRIMER ASSEMBLY TPA-3 IN WALL ABOVE.
3. 1/2" TP IN PEX TUBING BELOW FLOOR FROM TRAP PRIMER ASSEMBLY.
4. AT UNDERSLAB PIPE CROSSING: 4" SAN INV EL 64.2'±; 10" ST INV EL 62.9'±.



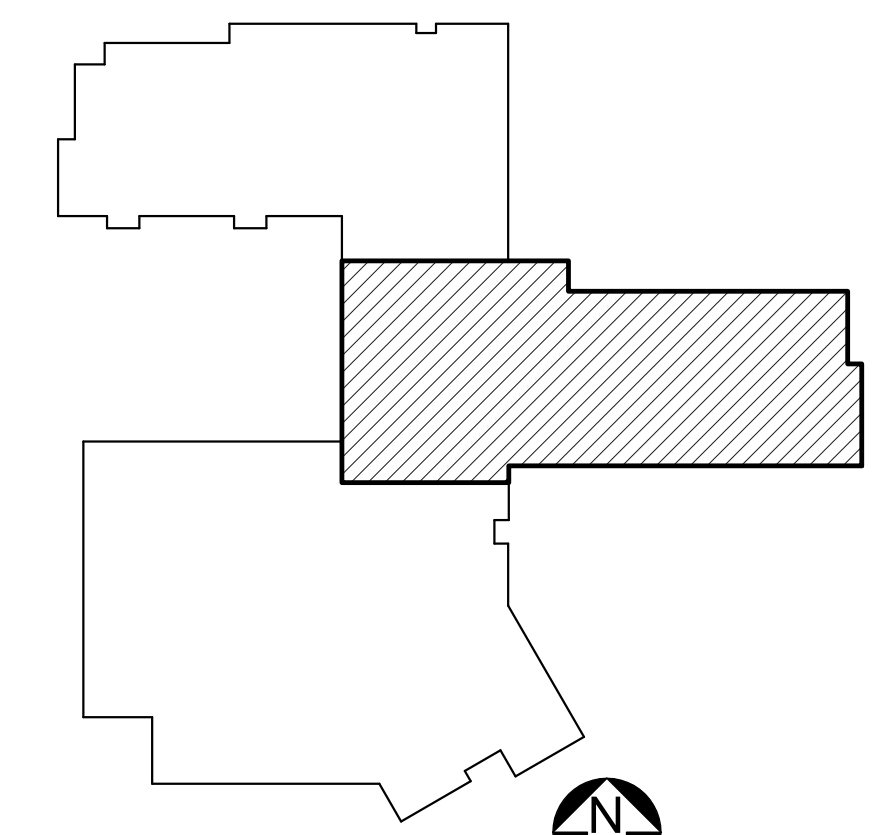
1" CW TO WATER FEATURE, FOR CONTINUATION REFER TO SHEET CU101

10" ST (31830 SF) TO SITE STORM SYSTEM, FOR CONTINUATION REFER TO SHEET CU101

2" CW TO BALL FIELD GROUND HYDRANT, FOR CONTINUATION REFER TO SHEET CU101

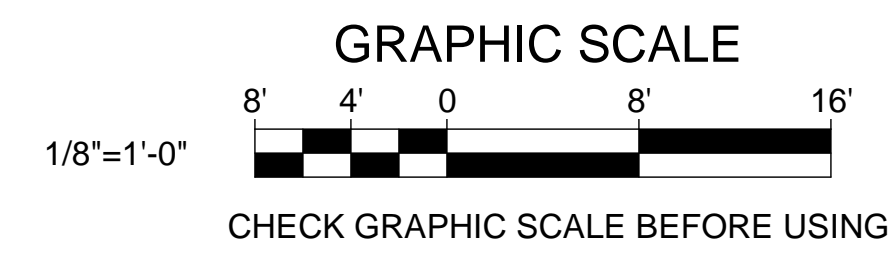
1 UNDERSLAB PLUMBING PART PLAN B
 P-102 SCALE: 1/8" = 1'-0"

SHEET HAS BEEN RE-ISSUED AS PART OF ADDENDUM #1, DATED 04/04/17. MISSING PIPE SIZES HAVE BEEN PROVIDED THROUGHOUT.



KEYPLAN
NOT TO SCALE

PLAN NORTH



NO.	DATE	DESCRIPTION	BY	NO.
1	4/4/17	ADDENDUM #1	MSA	CHECK BY: MSA
REVISIONS			DATE	04/04/17

STATE OF MAINE PUBLIC SCHOOL PROJECT

TITLE: PORTLAND PUBLIC SCHOOLS
 NEW FRED P. HALL ELEMENTARY SCHOOL
 LOCATION: 23 ORONO ROAD, PORTLAND, ME

TITLE THIS DWG.:
 UNDERSLAB PLUMBING PART PLAN B

OAK POINT ASSOCIATES

DRAWN BY: RML
 CHECK BY: MSA

DATE: 04/04/17

260 OF 312

4/4/2017 12:59:45 PM
 C:\Revit\Loc02\1602.08_HALL_SCHOOL_MECHANICAL_V17.rvt - angle: en:230.rvt