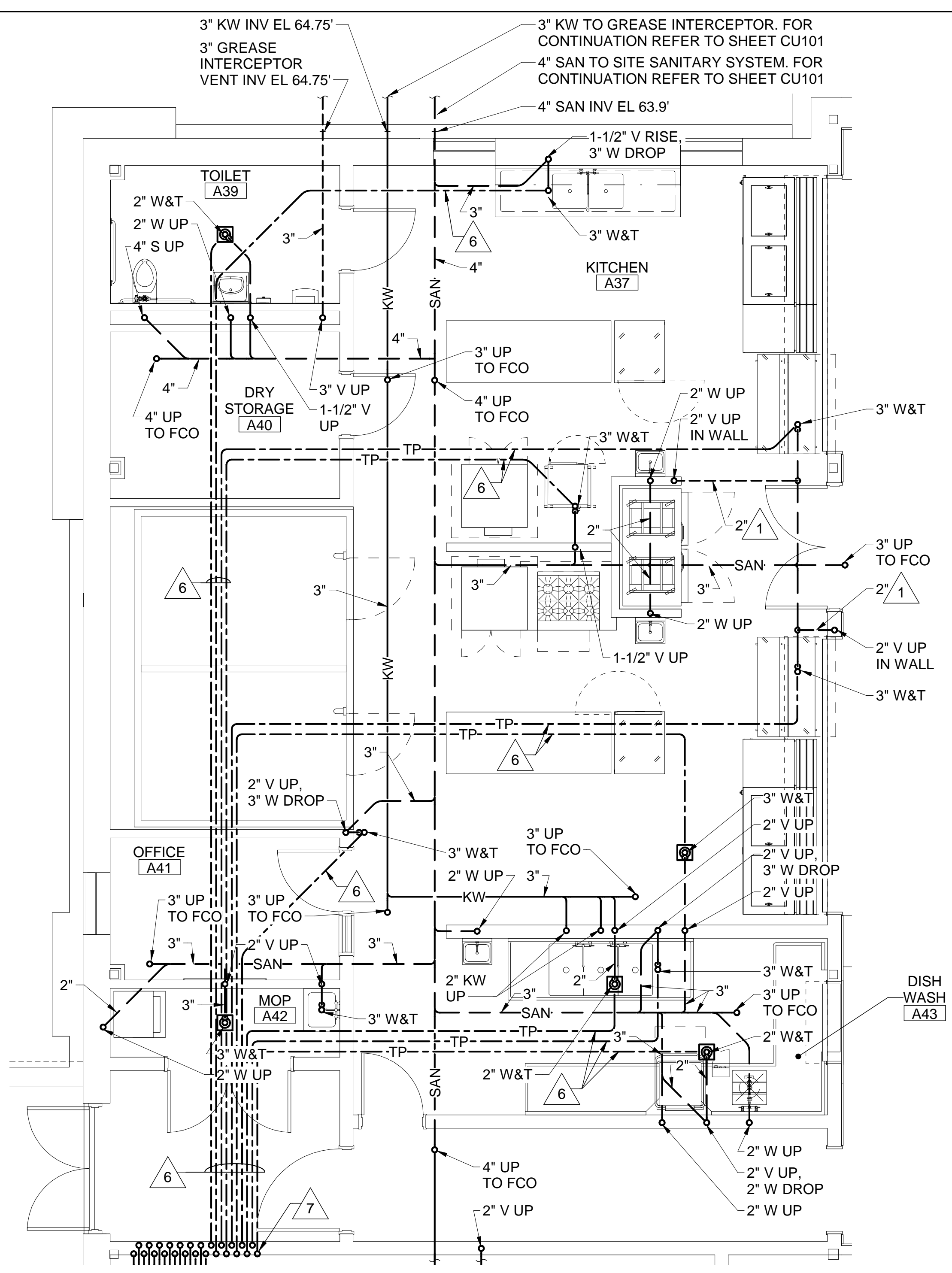


1 UNDERSLAB PLUMBING PART PLAN A
 P-101 SCALE: 1/8" = 1'-0"



2 ENLARGED KITCHEN UNDERSLAB PLUMBING PART PLAN
 P-101 P-101 SCALE: 1/4" = 1'-0"

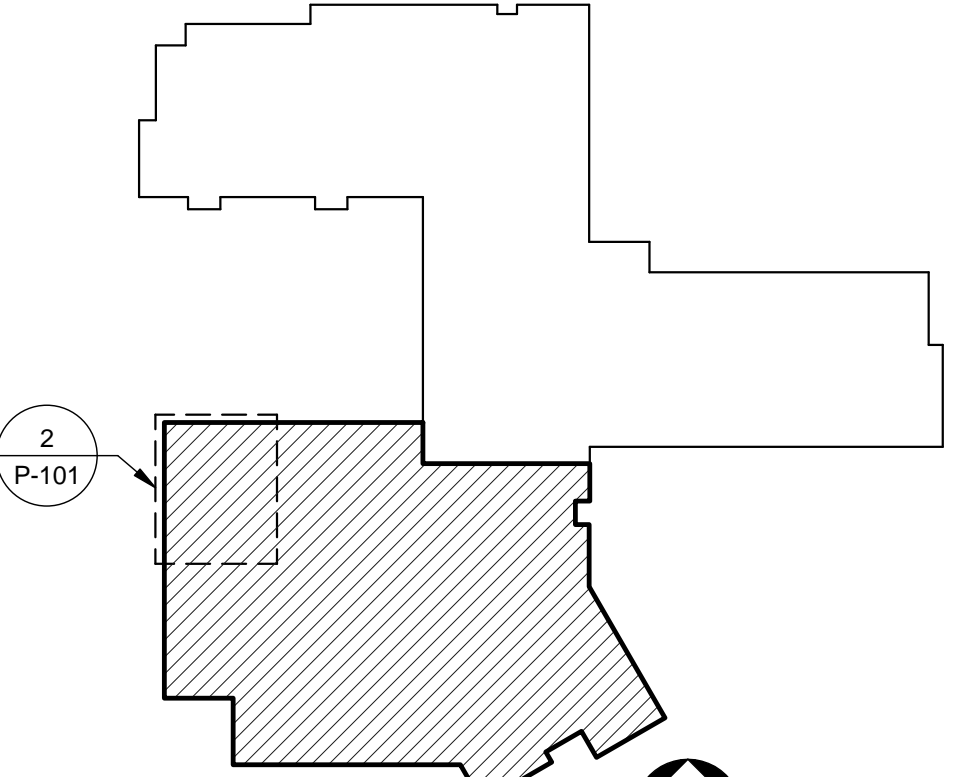
DRAWING KEYNOTES

- 1 RUN VENT PIPING UNDER SLAB TO WALL.
- 2 INSTALL SECTION OF STORM DRAINAGE INDICATED AT A PITCH OF 1/8"/FT IN THE DIRECTION OF FLOW.
- 3 AT UNDERSLAB PIPE CROSSING: 2" SAN INV EL 66.81±; 5" ST INV EL 64.13±.
- 4 AT UNDERSLAB PIPE CROSSING: 4" SAN INV EL 65.73±; 8" ST INV EL 64.52±.
- 5 NINE 1/2" TP IN PEX UP TO TRAP PRIMER ASSEMBLY TPA-2 IN WALL ABOVE.
- 6 1/2" TP IN PEX TUBING BELOW FLOOR FROM TRAP PRIMER ASSEMBLY.
- 7 TWENTY-SIX 1/2" TP IN PEX UP IN WALL TO TRAP PRIMER ASSEMBLY TPA-1 IN WALL ABOVE.

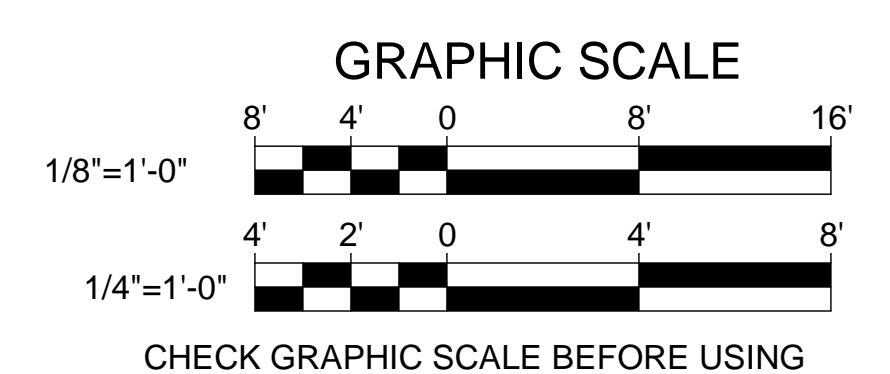
DRAWING NOTES

1. REFER TO GENERAL NOTES ON P-001 FOR REQUIRED PIPE SLOPES.
2. FIRST FLOOR FINISHED FLOOR ELEVATION IS 68.0' UNLESS OTHERWISE INDICATED.
3. FOR FLOOR AND PIPE PENETRATION DETAILS, REFER TO SHEET P-501.
4. FOR HANGER AND SUPPORT DETAILS, REFER TO SHEET P-501.
5. FOR PROJECT PHASING, MOSTLY RELATED TO SITE UTILITY WORK, REFER TO CIVIL SHEETS CP101, CU101 AND CU102.

SHEET HAS BEEN RE-ISSUED AS PART OF ADDENDUM #1, DATED 04/04/17. MISSING PIPE SIZES HAVE BEEN PROVIDED THROUGHOUT.



KEYPLAN NOT TO SCALE PLAN NORTH



STATE OF MAINE PUBLIC SCHOOL PROJECT		DRAWING NO. P-101	
TITLE PORTLAND PUBLIC SCHOOLS NEW FRED P. HALL ELEMENTARY SCHOOL		DRAWN BY: RDA	
LOCATION 23 ORONO ROAD, PORTLAND, ME		CHECK BY: MSA	
TITLE THIS DWG. UNDERSLAB PLUMBING PART PLAN A		DATE 04/04/17	
NO.	DATE	DESCRIPTION	BY
1	4/4/17	ADDENDUM #1	MSA
REVISIONS		DATE	
		04/04/17	