

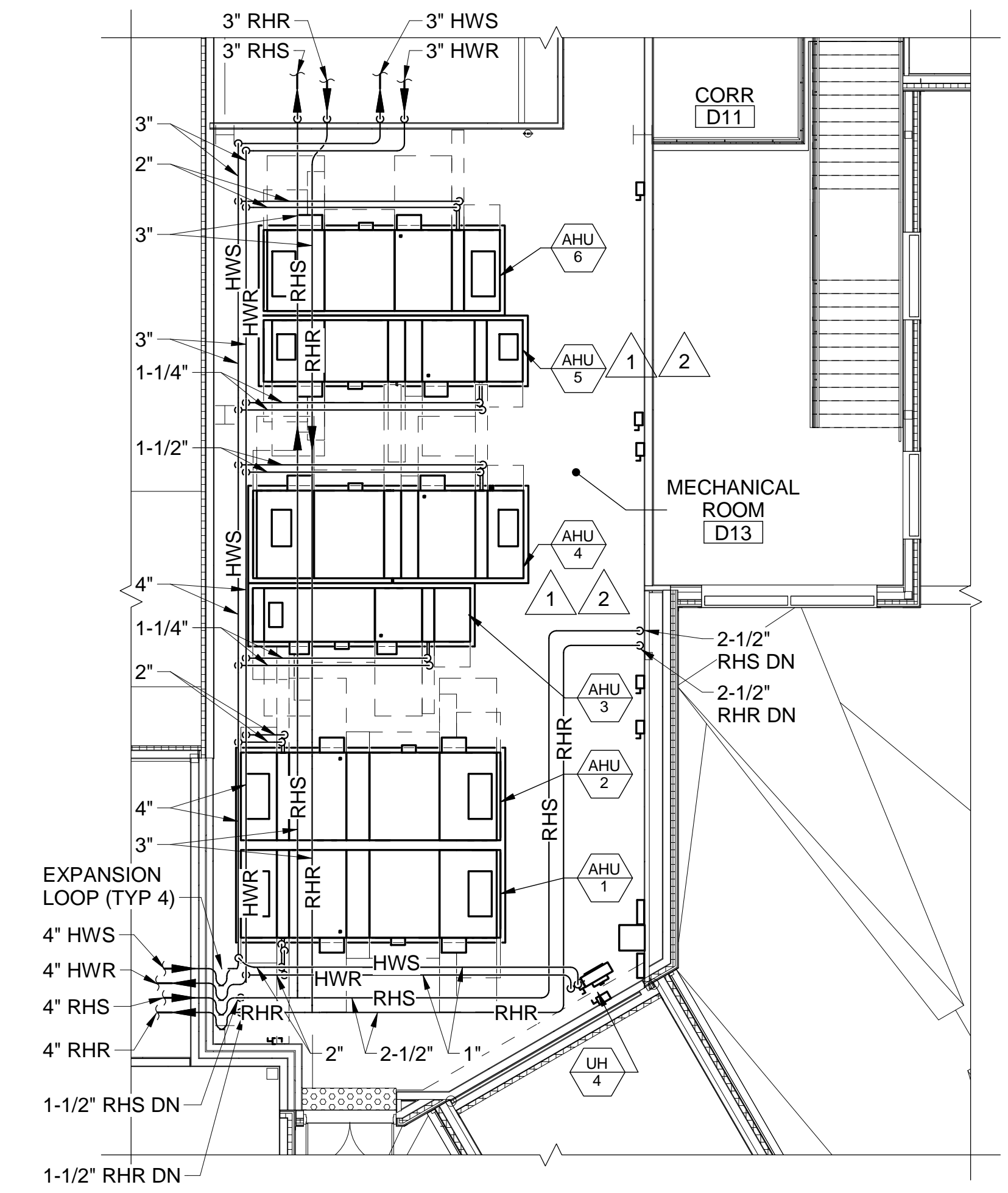
1 SECOND FLOOR PIPING PART PLAN
MP104 SCALE: 1/8" = 1'-0"

DRAWING NOTES

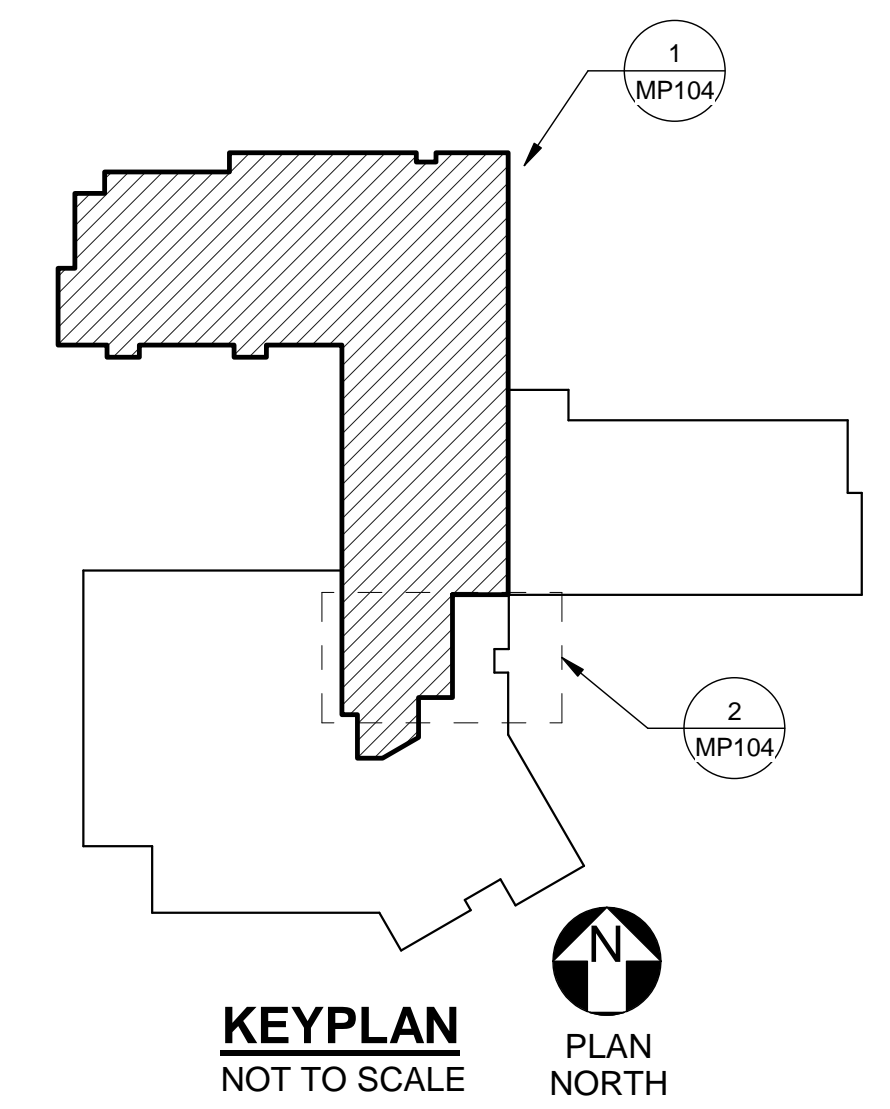
- REFER TO M-602 FOR RADIANT MANIFOLD SCHEDULE.
- INSTALL RADIANT MANIFOLDS ABOVE CEILINGS IN WALL-RECESSED METAL ENCLOSURES.
- PROVIDE 1/2"-THICK INSULATION ON RADIANT LOOP TUBING BETWEEN MANIFOLDS AND FLOOR SLAB.

DRAWING KEYNOTES

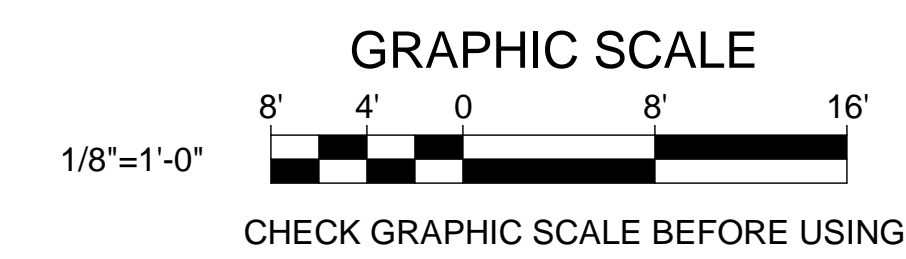
- PROVIDE CONDENSATE DRAIN PIPING FROM COOLING COIL SECTION TO THE NEAREST FLOOR DRAIN. REFER TO M501/DETAIL 15
- PROVIDE REFRIGERANT LIQUID AND SUCTION LINE PIPING FROM AHU COOLING COIL TO ROOF-MOUNTED ACCU. COMPLY WITH MANUFACTURERS WRITTEN INSTRUCTIONS.



2 SECOND FLOOR MECH ROOM D13 PIPING PART PLAN
MP104 SCALE: 1/8" = 1'-0"



KEYPLAN
NOT TO SCALE
PLAN NORTH



		STATE OF MAINE PUBLIC SCHOOL PROJECT TITLE: PORTLAND PUBLIC SCHOOLS NEW FRED P. HALL ELEMENTARY SCHOOL LOCATION: 23 ORONO ROAD, PORTLAND, ME TITLE THIS DWG.: SECOND FLOOR MECHANICAL PIPING PLAN
DRAWN BY: Author CHECK BY: MSA	BY: NO. DATE: 03/17/17	OAK POINT ASSOCIATES DRAWING NO. MP104 SHEET NO. 244 OF 312