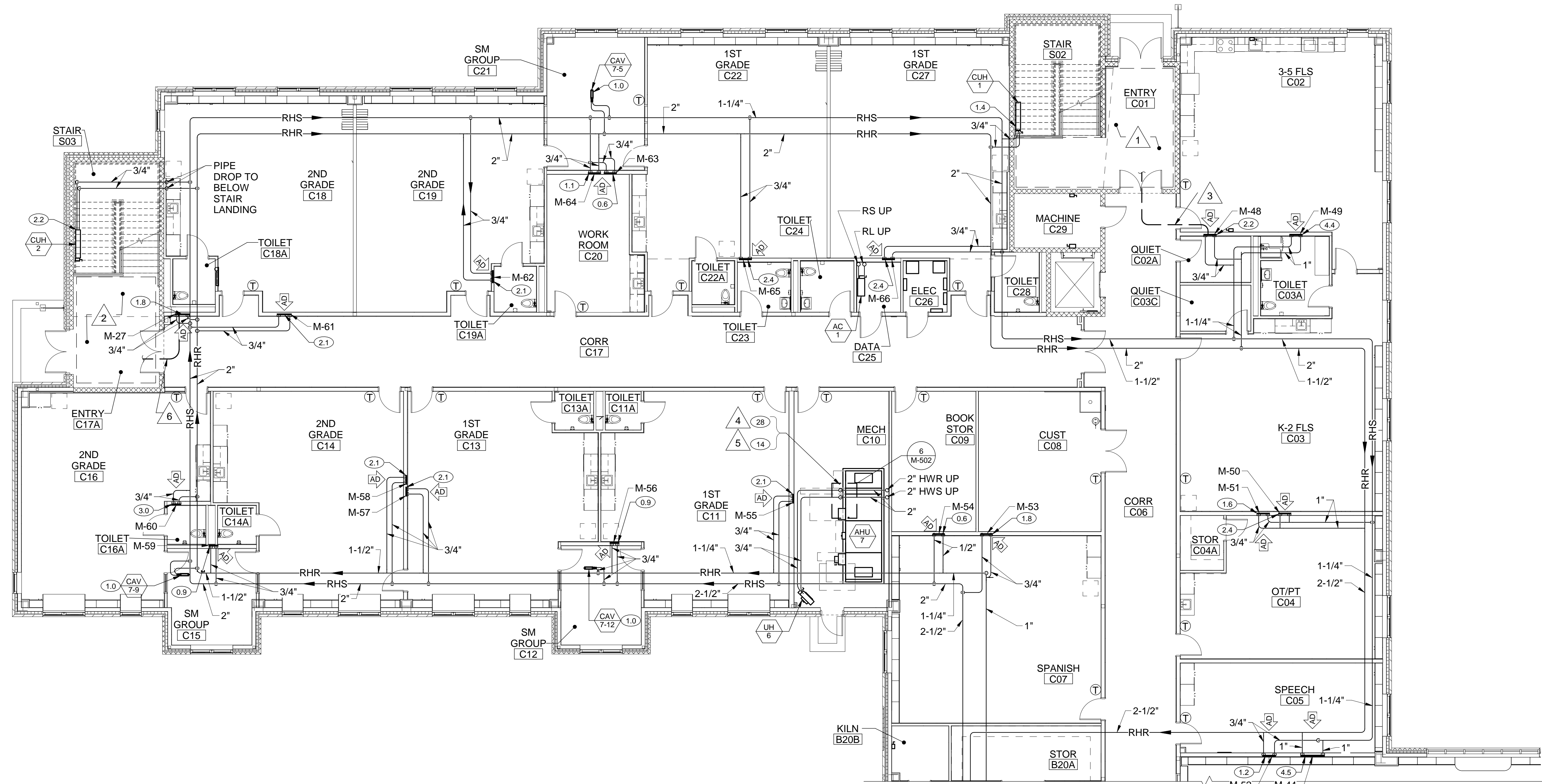


**DRAWING NOTES**

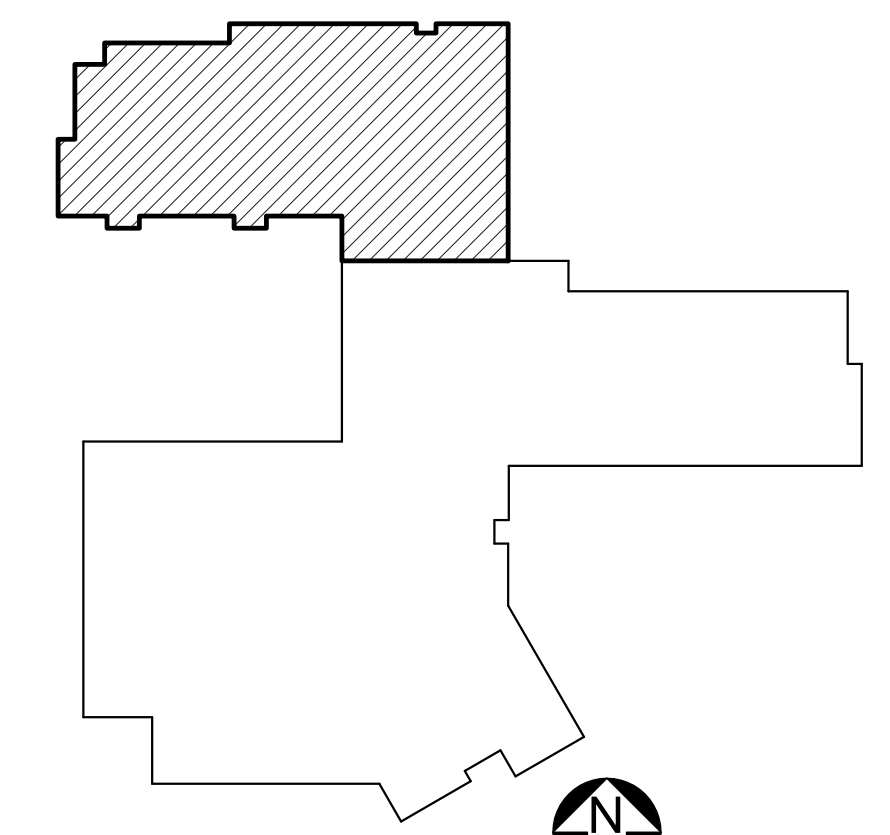
- REFER TO M-602 FOR RADIANT MANIFOLD SCHEDULE.
- INSTALL RADIANT MANIFOLDS ABOVE CEILINGS IN WALL-RECESSED METAL ENCLOSURES.
- PROVIDE 1/2"-THICK INSULATION ON RADIANT LOOP TUBING BETWEEN MANIFOLDS AND FLOOR SLAB.

**DRAWING KEYNOTES**

- AREA COVERED BY RADIANT MANIFOLD M-48.
- AREA COVERED BY RADIANT MANIFOLD M-27.
- RADIANT TUBING BELOW SLAB SERVING ENTRY C01.
- FULL FLOW THROUGH COIL.
- FULL FLOW THROUGH BYPASS.
- RADIANT TUBING BELOW SLAB SERVING STAIR S03.

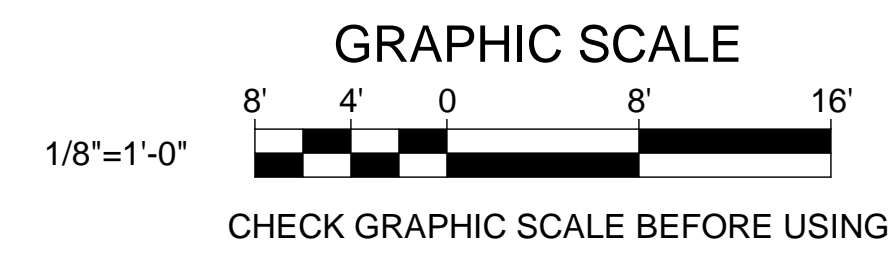


**1 FIRST FLOOR MECHANICAL PIPING PART PLAN C**  
 MP103 SCALE: 1/8" = 1'-0"



**KEYPLAN**  
 NOT TO SCALE

**PLAN**  
 NORTH



		<b>STATE OF MAINE</b> <b>PUBLIC SCHOOL PROJECT</b>	
		TITLE: PORTLAND PUBLIC SCHOOLS NEW FRED P. HALL ELEMENTARY SCHOOL LOCATION: 23 ORONO ROAD, PORTLAND, ME	
DRAWN BY: Author CHECK BY: MSA		TITLE THIS DWG: <b>FIRST FLOOR MECHANICAL PIPING PART PLAN C</b>	
NO.	DATE	DESCRIPTION	BY
		REVISIONS	DATE 03/17/17
OAK POINT ASSOCIATES 231 Main Street, Biddeford, Maine 04005		DRAWING NO. <b>MP103</b>	SHEET NO. <b>243</b> OF 312