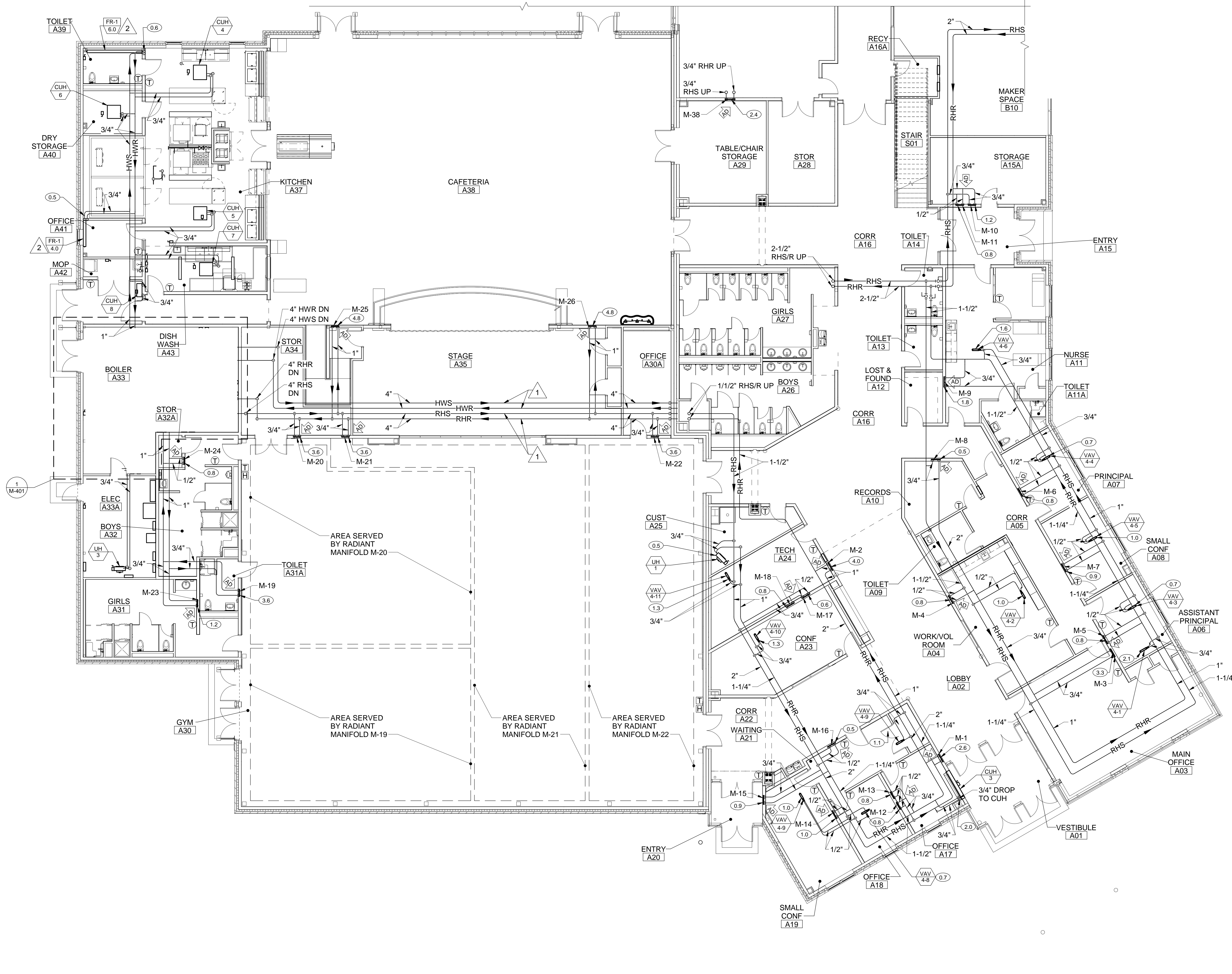


DRAWING NOTES

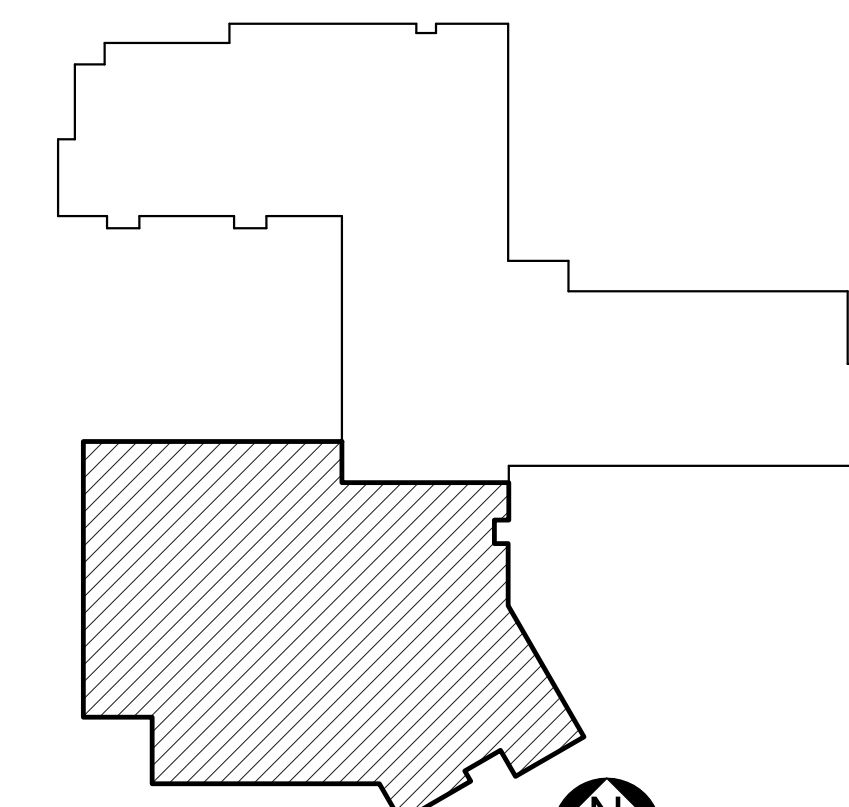
- REFER TO M-602 FOR RADIANT MANIFOLD SCHEDULE.
- INSTALL RADIANT MANIFOLDS ABOVE CEILINGS IN WALL-RECESSED METAL ENCLOSURES.
- PROVIDE 1/2"-THICK INSULATION ON RADIANT LOOP TUBING BETWEEN MANIFOLDS AND FLOOR SLAB.

DRAWING KEYNOTES

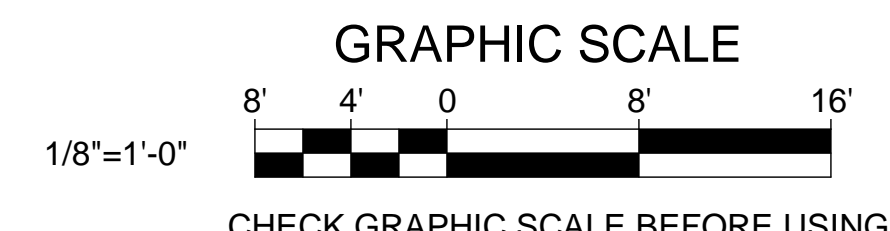
- INSTALL PIPING TIGHT TO ROOF STRUCTURE ABOVE STAGE.
- INSTALL HWR PIPING INSIDE FINRTUBE COVER.



1 FIRST FLOOR MECHANICAL PIPING PART PLAN A
 MP101 SCALE: 1/8" = 1'-0"



KEYPLAN
 NOT TO SCALE



		STATE OF MAINE PUBLIC SCHOOL PROJECT TITLE: PORTLAND PUBLIC SCHOOLS NEW FRED P. HALL ELEMENTARY SCHOOL LOCATION: 23 ORONO ROAD, PORTLAND, ME TITLE THIS DWG: FIRST FLOOR MECHANICAL PIPING PART PLAN A	
DRAWN BY: Author CHECK BY: MSA	BY: NO. DATE: 03/17/17	OAK POINT ASSOCIATES 231 Main Street, Biddeford, Maine 04005 207.283.9192	DRAWING NO. MP101 SHEET NO. 241 OF 312
NO. DATE	DESCRIPTION	BY	NO.
	REVISIONS		