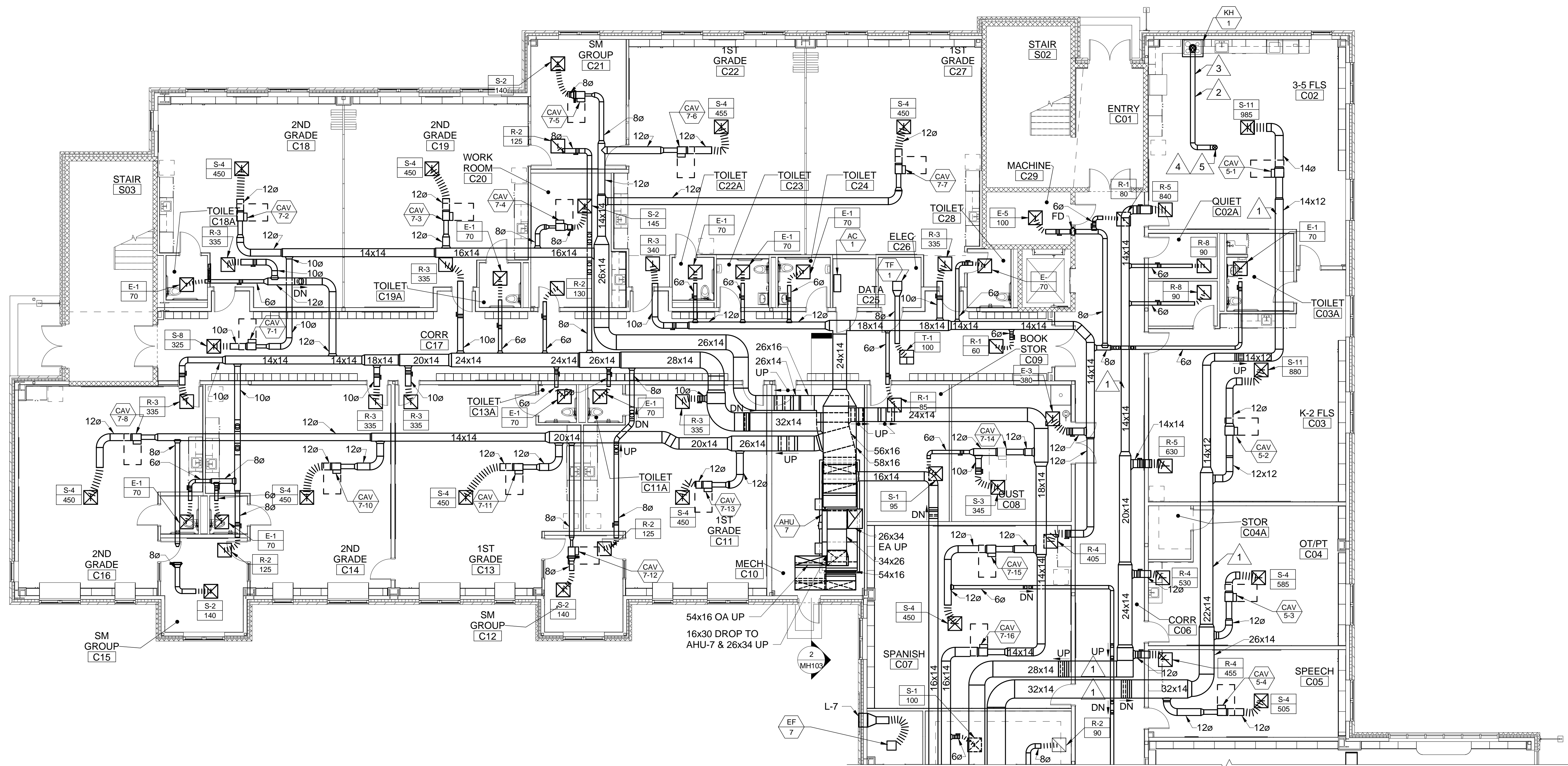


**DRAWING NOTES**

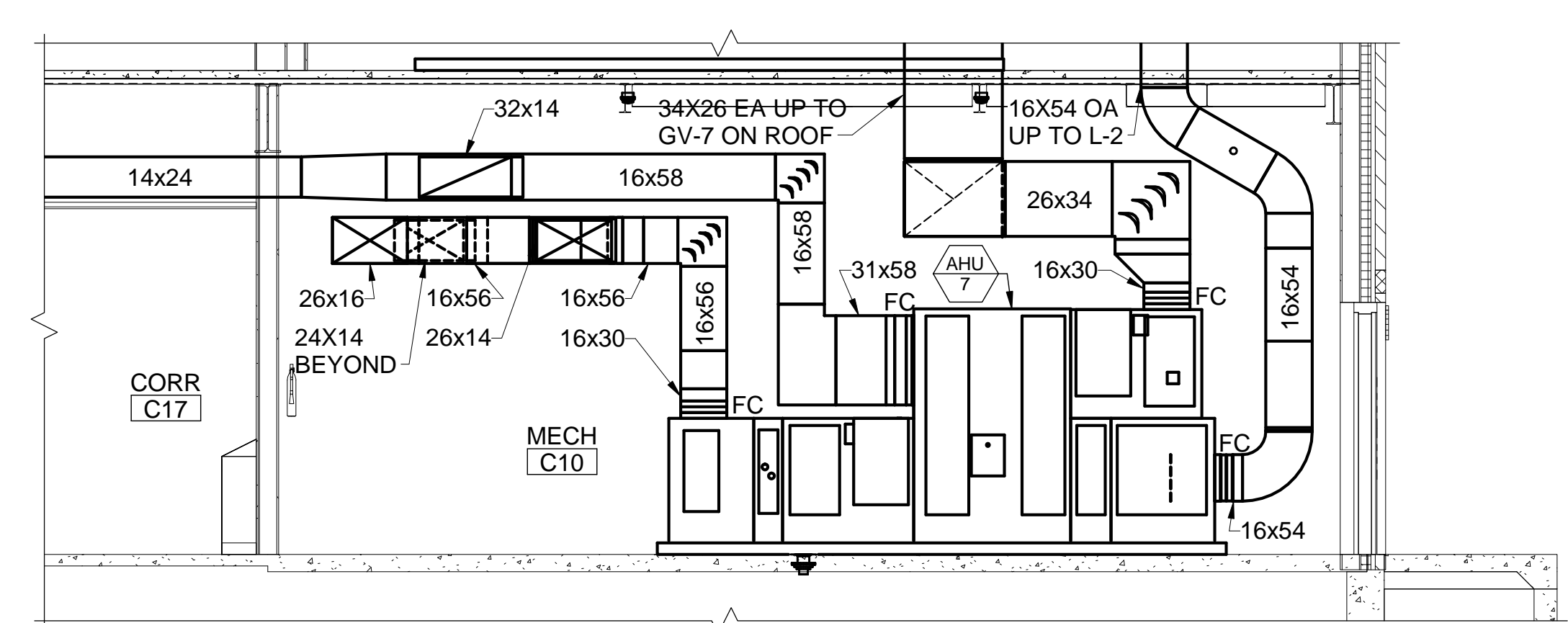
- SUPPLY DUCTWORK SHALL BE INSULATED WITH 1"-THICK BLANKET INSULATION UNLESS OTHERWISE NOTED.
- RETURN DUCTWORK SHALL NOT BE INSULATED UNLESS OTHERWISE NOTED.

**DRAWING KEYNOTES**

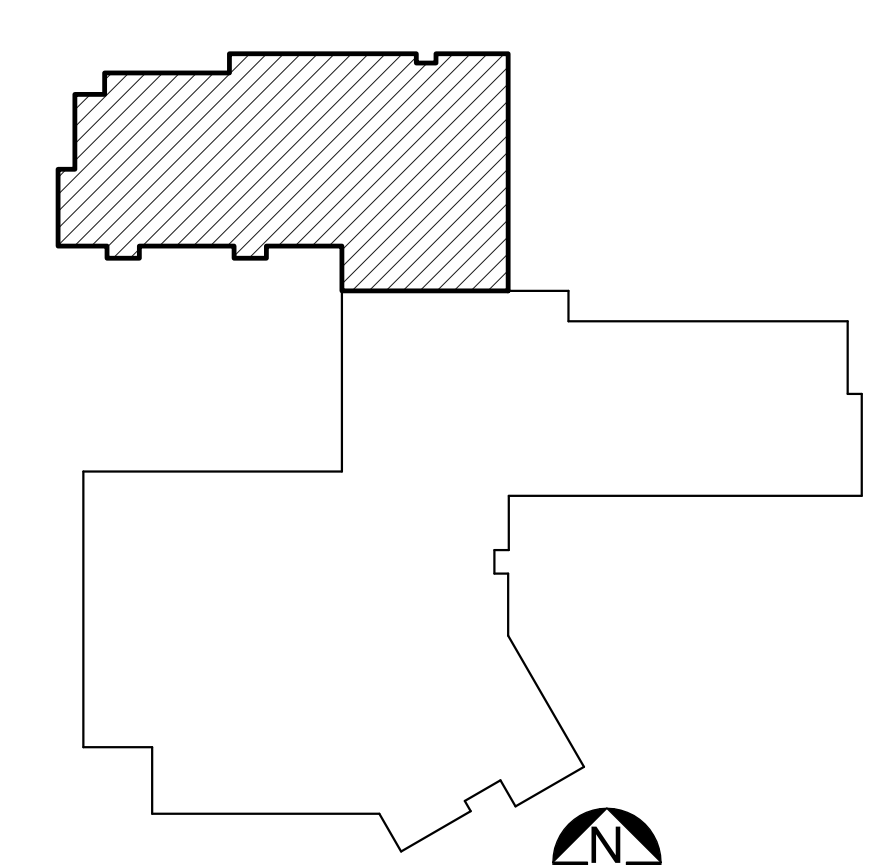
- PROVIDE 2"-THICK INSULATION WITH VAPOR BARRIER ON SUPPLY AND RETURN DUCTWORK ASSOCIATED WITH AHU-6.
- PROVIDE HIGH-TEMPERATURE RATED "FIRE-WRAP" INSULATION ON KITCHEN EXHAUST HOOD DUCTWORK.
- COMMERCIAL KITCHEN RANGE HOOD PER NFPA 96 WITH 36X42 HOOD CENTERED OVER RANGE. FOR HOOD AND DUCT INSTALLATION REFER TO M-502.
- REFER TO P-108 FOR ROOF LOCATION.
- PROVIDE TRANSITION AT EXHAUST FAN AS NEEDED.



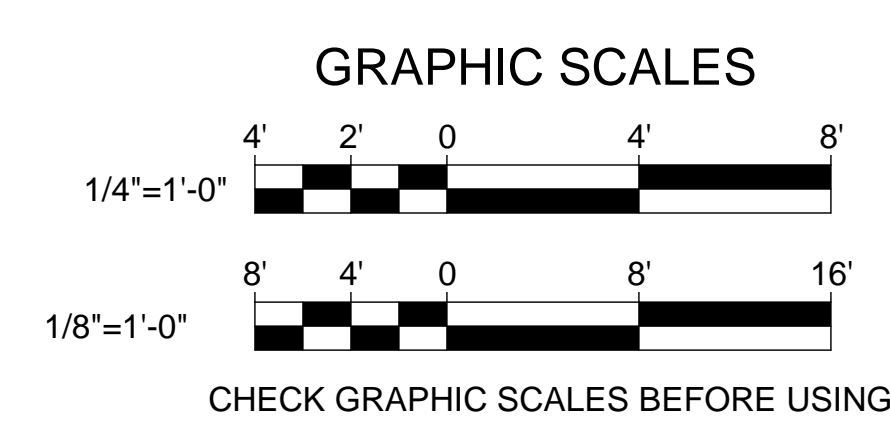
**1 FIRST FLOOR MECHANICAL DUCTWORK PART PLAN C**  
 MH103 SCALE: 1/8" = 1'-0"



**2 AHU-7 SECTION**  
 MH103 SCALE: 1/4" = 1'-0"



**KEYPLAN**  
 NOT TO SCALE  
**PLAN**  
 NORTH



		<b>STATE OF MAINE</b> <b>PUBLIC SCHOOL PROJECT</b> PORTLAND PUBLIC SCHOOLS NEW FRED P. HALL ELEMENTARY SCHOOL LOCATION: 23 ORONO ROAD, PORTLAND, ME	
DRAWN BY: KLG CHECK BY: MSA		TITLE THIS DWG: <b>FIRST FLOOR MECHANICAL DUCTWORK PART PLAN C</b>	
NO. DATE	DESCRIPTION	BY	DATE
	REVISIONS		03/17/17
OAK POINT ASSOCIATES 231 Main Street, Biddeford, Maine 04005		DRAWING NO. <b>MH103</b> SHEET NO. <b>239</b> OF <b>312</b>	