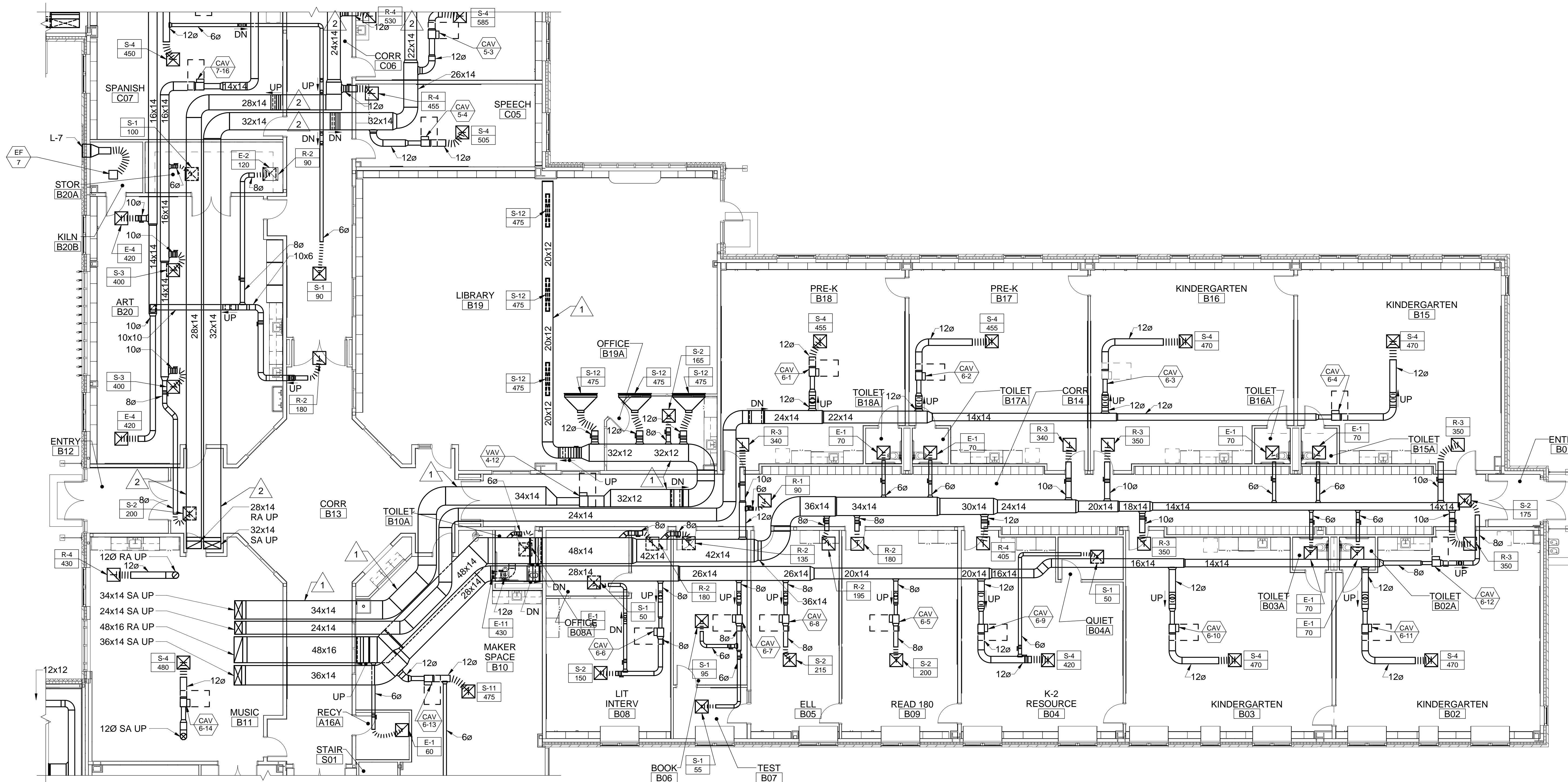


DRAWING NOTES

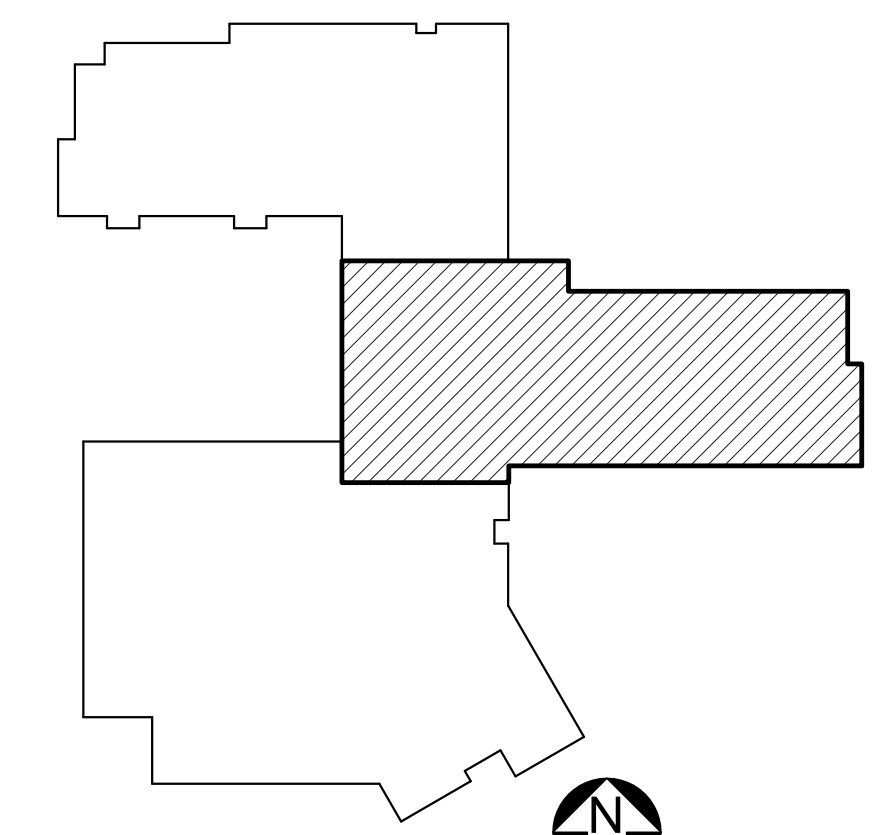
1. SUPPLY DUCTWORK SHALL BE INSULATED WITH 1"-THICK BLANKET INSULATION UNLESS OTHERWISE NOTED.
2. RETURN DUCTWORK SHALL NOT BE INSULATED UNLESS OTHERWISE NOTED.

DRAWING KEYNOTES

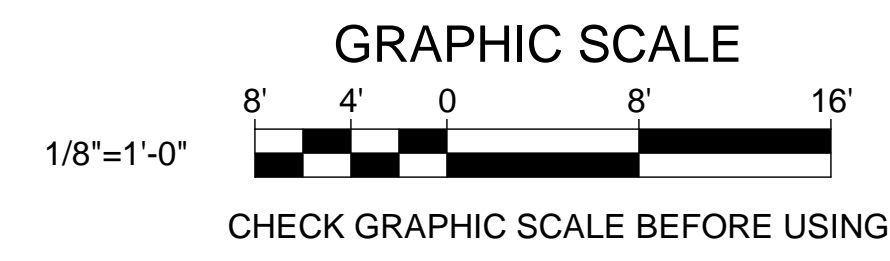
- 1 PROVIDE 2"-THICK INSULATION WITH VAPOR BARRIER ON SUPPLY DUCT SERVING LIBRARY. PROVIDE RIGID BOARD INSULATION WITH FSK JACKED ON DUCTWORK PASSING THROUGH MAKER SPACE. PROVIDE BLANKET INSULATION ON CONCEALED DUCTWORK.
- 2 PROVIDE 2"-THICK INSULATION WITH VAPOR BARRIER ON SUPPLY AND RETURN DUCTWORK ASSOCIATED WITH AHU-6.



1 FIRST FLOOR MECHANICAL DUCTWORK PART PLAN B
 MH102 SCALE: 1/8" = 1'-0"



KEYPLAN
 NOT TO SCALE
PLAN
 NORTH



		STATE OF MAINE PUBLIC SCHOOL PROJECT TITLE: PORTLAND PUBLIC SCHOOLS NEW FRED P. HALL ELEMENTARY SCHOOL LOCATION: 23 ORONO ROAD, PORTLAND, ME TITLE THIS DWG: FIRST FLOOR MECHANICAL DUCTWORK PART PLAN B
DRAWN BY: KLG CHECK BY: MSA	BY: NO. DATE: 03/17/17	OAK POINT ASSOCIATES 231 Main Street, Biddeford, Maine 04005 207.283.9191 207.283.9192
NO. DATE DESCRIPTION REVISIONS	BY NO. DATE: 03/17/17	DRAWING NO. MH102 SHEET NO. 238 OF 312