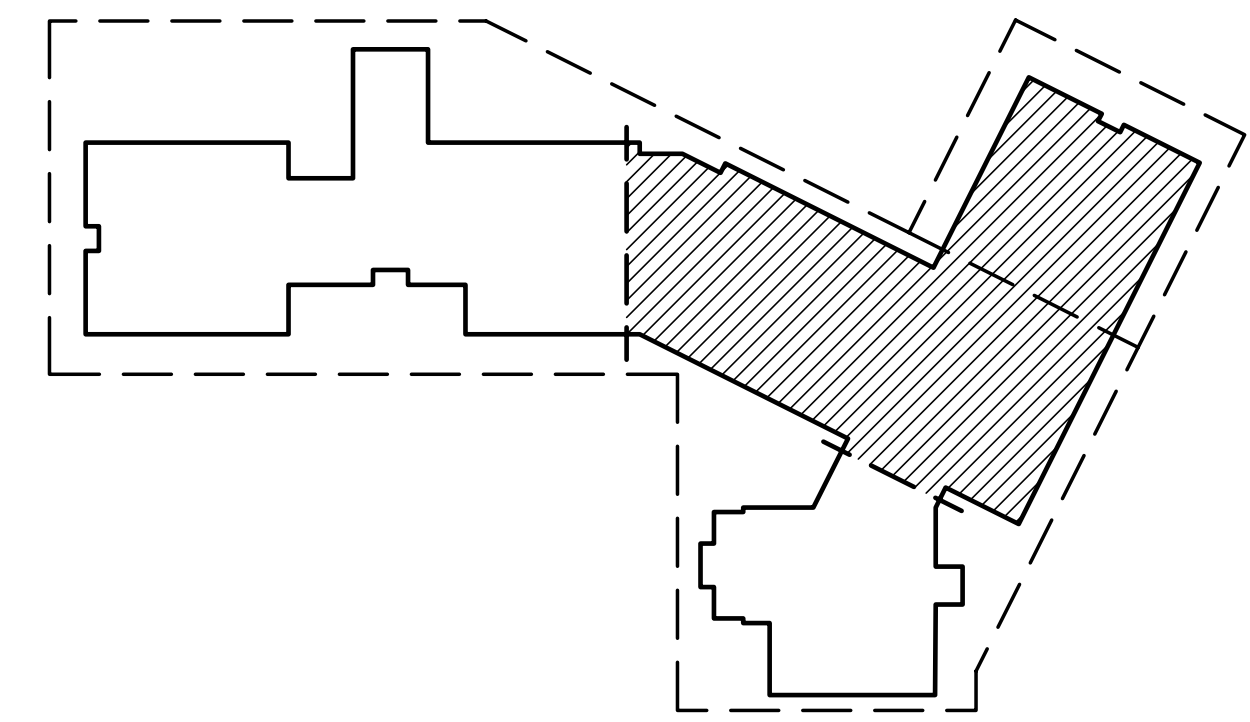
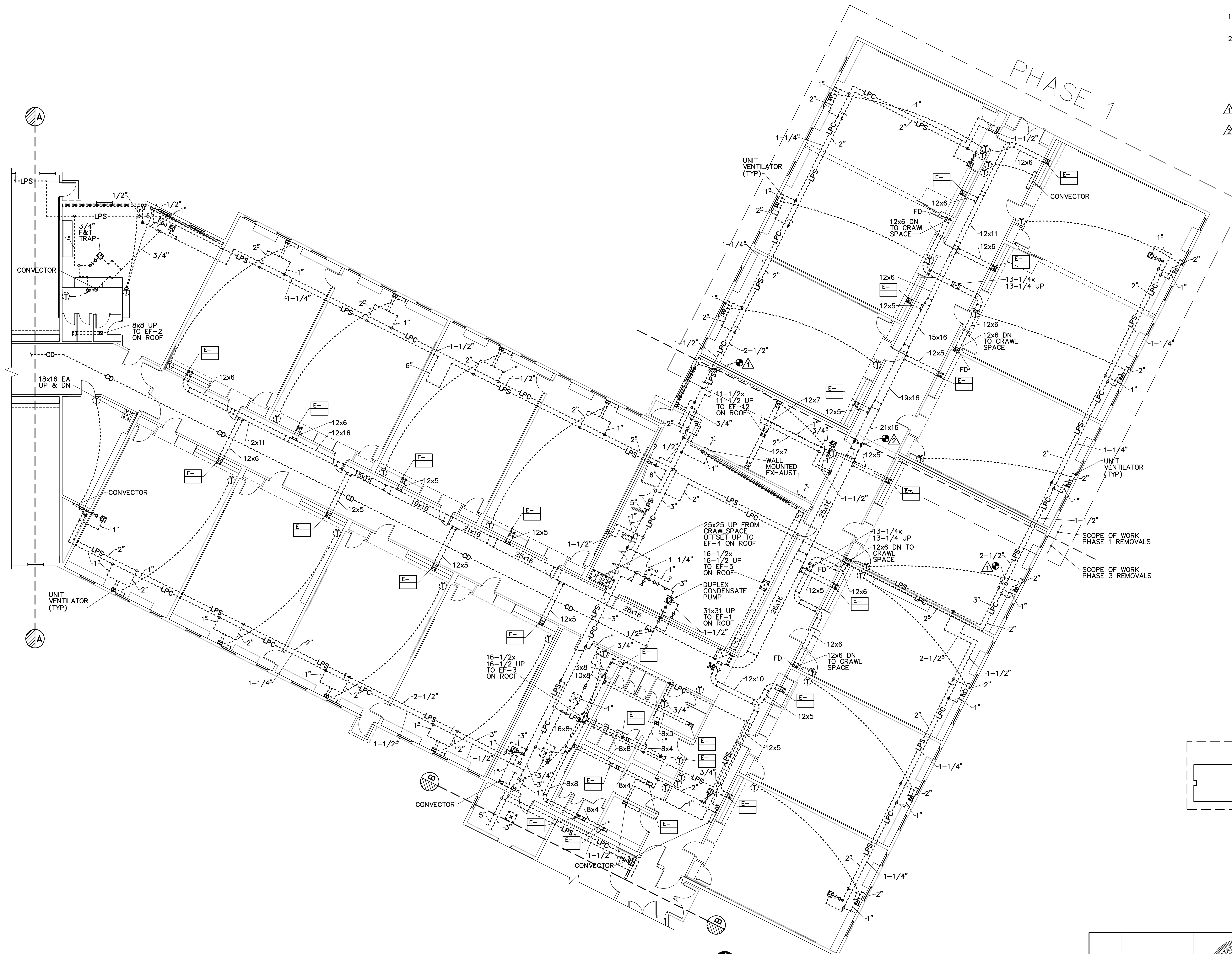


DRAWING NOTES

1. REMOVALS INDICATED ON THIS DRAWING SHALL BE COMPLETED DURING PHASE 3.
2. PIPING AND PLUMBING SYSTEMS THAT ARE TO BE REMOVED DURING PHASE 3 SHALL REMAIN FULLY OPERATIONAL DURING PHASES 1 AND 2.

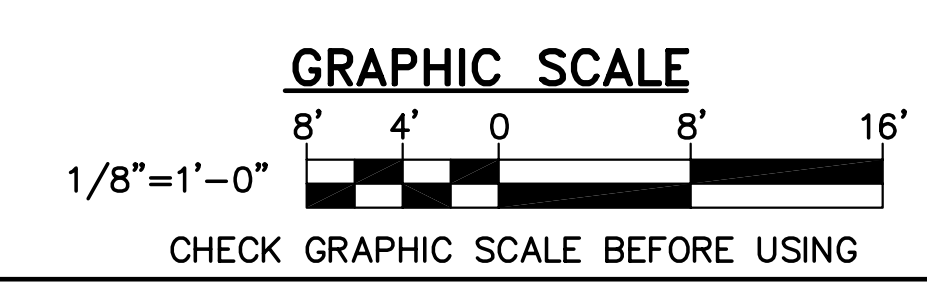
DRAWING KEYNOTES

- △ CUT AND CAP LPS & LPC AS PART OF REMOVALS PHASE 1.
- △ CUT AND CAP EXHAUST DUCT AS PART OF REMOVALS PHASE 1.



KEY PLAN: PLAN NORTH

1 MECHANICAL REMOVALS PART PLAN
 MD102 SCALE: 1/8"=1'-0"
 PLAN NORTH



		STATE OF MAINE PUBLIC SCHOOL PROJECT TITLE: PORTLAND PUBLIC SCHOOLS NEW FRED P. HALL ELEMENTARY SCHOOL LOCATION: 53 GROUND ROAD, PORTLAND, ME TITLE THIS DWG: MECHANICAL REMOVALS PART PLAN	
DRAWN BY: KLG CHECKED BY: MSA	DATE: 03/17/17	DRAWING NO. MD102	SHEET NO. 235 OF 312
NO. DATE DESCRIPTION BY NO.		REVISIONS	